



UNIVERSITY OF  
**WEST LONDON**  
The Career University

**Partner with  
the Career  
University  
2022**





# Contents

1. Why UWL? .....	4
2. Partner with a levelling up university .....	6
3. Engaging employers.....	10
4. Developing people .....	14
5. Growing business.....	18
6. Enabling industry .....	22
7. Civic engagement .....	32
The UWL family.....	38
8. Embracing innovation .....	40
9. Research and study.....	48
10. Ten ways to partner with UWL.....	51

# 1. Why UWL?

Here at the University of West London (UWL) we are proud to have a reputation that produces talent on a local, national, and international scale. This reputation is not earned through operating in isolation, and we rely on partnering with business to provide students the best possible platform for their career.

Our diversity in both academic schools and our student body makes clear our commitment to support the modern needs of business and the economy.

Our mission is to be an industry partner of choice, supporting business needs through access to our talented and diverse students, and quality research and enterprise.

This brochure is threaded with what matters most here at UWL – the Graduate Outcomes of our students along with our full range of opportunities where businesses can partner with UWL.

**Professor Anthony Woodman BSc (Hons), MSc (Dist), PhD, Deputy Vice-Chancellor and Provost for Health.**

35th in The Guardian Good University Guide 2022

1st in England for Teaching Satisfaction in The Guardian Good University Guide 2022

5th modern\* university in the UK in The Guardian Good University Guide 2022

University of the Year for Student Experience in  
The Times/The Sunday Times Good University Guide 2021

10th for Social Inclusion in The Times/The Sunday Times Good University Guide 2022

UWL are ranked in the top 20 Universities for Social Mobility in the UK\*\*



\*Modern universities are defined as higher education institutions that were granted university status in, and subsequent to, 1992

\*\*The Sutton Trust: Universities and Social Mobility report 2022 with the Institute for Fiscal Studies.



A photograph of the University of West London building, a multi-story brick structure with large windows. The university's name is displayed in large, white, three-dimensional letters along the top of the building. A modern glass entrance is visible on the left, reflecting the surrounding urban environment. A blue diagonal graphic element is present on the left side of the image.

**“As a high performing institution we welcome businesses to partner with the University of West London.”**

**Professor Anthony Woodman  
Deputy Vice-Chancellor and  
Provost for Health**

## 2. Partner with a levelling up university

### Modern, progressive and diverse

UWL believes every individual should have the opportunity to meet their potential, irrespective of their background.

**“UWL successfully addresses social mobility** in some of the most deprived areas of London” – Social Mobility Pledge.

**UWL are a levelling up university:** Reaching into communities and families for whom going to university is not the norm.

**UWL are a beacon of widening participation:** Providing opportunities to students from some of the most disadvantaged backgrounds in the country.

**Improving diversity** is at the top of the agenda of graduate recruiters and aligns with our mission to enable opportunity for diverse talent at UWL.

61% of UWL students are from Black and Underrepresented Minority Ethnic Groups\*

28 % Sector average\*\*

60% of UWL students are mature (aged 21 or over) on entry\*

44 % Sector average\*\*

26% are Black students at UWL\*

9 % Sector average\*\*

60% of UWL Students are Women\*

50 % Sector average\*\*

53% of UWL students are first in their family to enter Higher Education\*

50 % Sector average\*\*

13% of UWL students have a registered disability\*

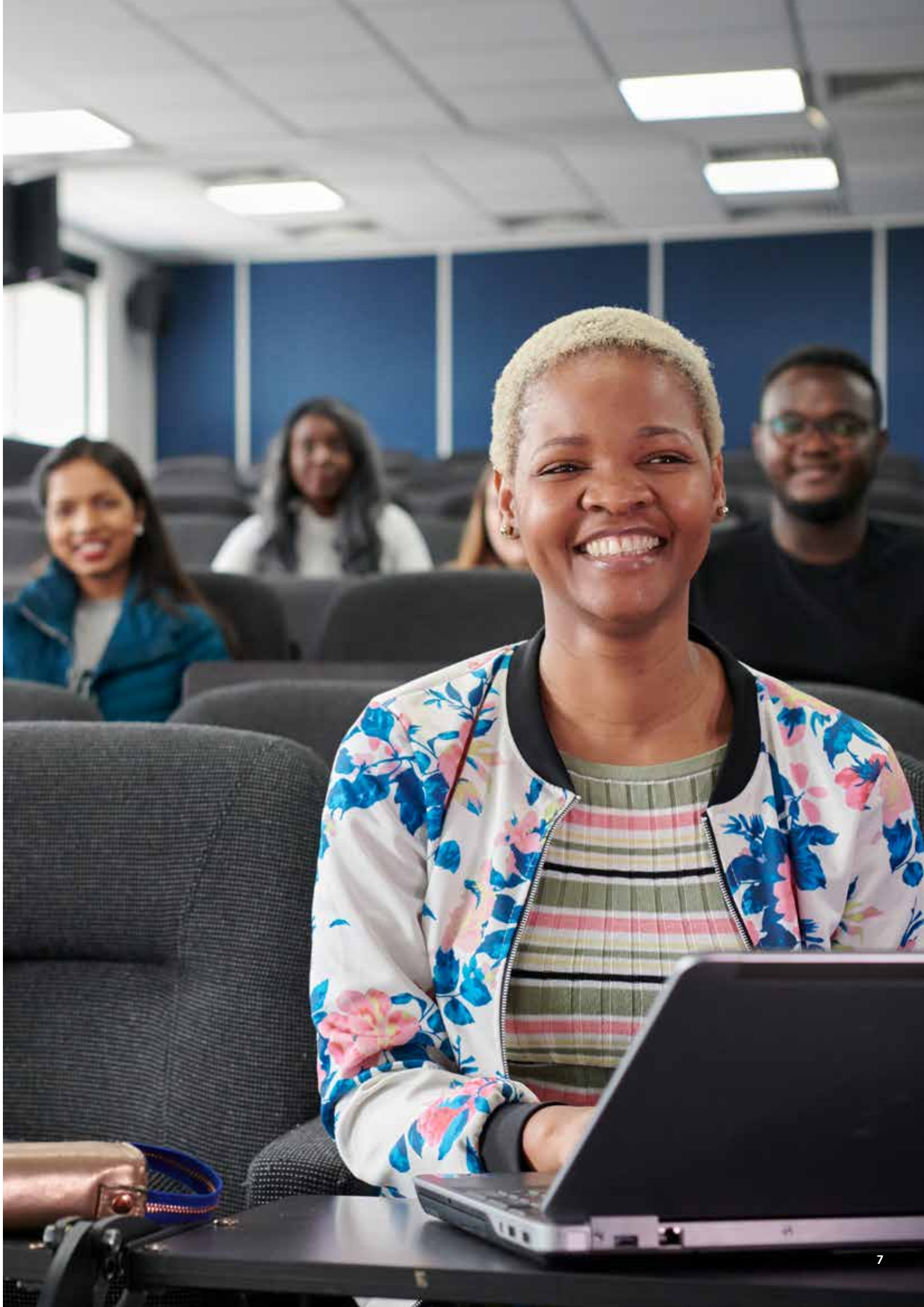
14 % Sector average\*\*

51% of students are from areas of multiple deprivation (classed as index of multiple deprivation quintiles 1-2)\*

50 % Sector average\*\*

\*UWL Annual Report \*\*Office For Students Statistics





**34% of academic staff are from black and minority ethnic backgrounds\***  
in contrast to 17% across the HE sector\*\*

**27% of our professoriate are from black and minority ethnic backgrounds\***  
compared with 10% in the sector \*\*

**9% of our professoriate from black ethnic backgrounds\***  
in comparison to 0.7% in the sector\*\*

**0.0% is our median gender pay gap**  
compared with a sector median gap 13.7% \*\*

**2.36% is our ethnicity pay gap**  
reduced from 5.57% in 2019-20\*

**Companies in the top quartile for gender diversity**  
are 15% more likely to have financial returns above their industry medians\*\*\*

**Companies in the top quartile for racial and ethnic diversity**  
are 35% more likely to have financial returns above their respective national industry medians\*\*\*


\*UWL Annual Report

\*\*HESA Higher Education Staff Statistics: UK, 2018/19 2 Advance HE: Equality and Higher Education: Staff Statistical Report 2019

\*\*\* [www.mckinsey.com/business-functions/organization/our-insights/why-diversity-matters?reload](https://www.mckinsey.com/business-functions/organization/our-insights/why-diversity-matters?reload)





A man with dark hair and a beard, wearing a blue shirt, a high-visibility yellow safety vest with reflective silver stripes, and black work gloves, is focused on operating a large, complex industrial machine. The machine has a blue frame and two vertical silver metal rods. He is using a tool to adjust a component on the machine. The background is a plain, light-colored wall.

**“UWL are leading the way in promoting equality of opportunity for both staff and students and more than playing our part in terms of social mobility and equity.”**

Jennifer Barnard,  
Chair of the Board of Governors

### 3. Engaging employers



#### Graduate Talent Bank Agency

- End-to-end recruitment services in early talent
- Access to diverse talent at a modern, progressive university
- Assessment and selection
- Data and knowledge of student and graduate recruitment
- Engagement and onboarding

#### What do we offer

- Graduate Scheme consultation
- Internship and Placement recruitment advice
- Learning and Development support

#### No Fees

**Our graduate recruitment consultation service is free.**

**For more information contact:**

✉ [PES@uwl.ac.uk](mailto:PES@uwl.ac.uk)

☎ 020 8231 2700/2102

### Tap into UWL recruitment solutions

Best practice and guidance in meeting your diversity and inclusion recruitment commitments

Developing a recruitment attraction strategy

Access to assessment and selection software and personnel support

Data and knowledge of student and graduate recruitment

### We have experience in:

Building end-to-end graduate schemes for international organisations

Delivering and meeting recruitment targets for national early talent recruiters

Designed assessment and attraction strategies for employers

Sharing the latest research on phenomena impacting early talent recruitment



### What we offer:

Designated account manager for the recruitment of UWL graduates and interns

Designated placement officer to recruit students for placements and work experience

On-campus and virtual careers fairs

Presentations to promote opportunities and transfer industry knowledge

Free vacancy advertising service to promote your opportunities to UWL students and graduates

Free room hire to interview UWL students and recent graduates\*

Pop-up stands in high footfall areas of campus to promote recruitment

Adaptable and scalable end-to-end recruitment services for your organisation





## Supporting the employability of UWL students

Work experience is embedded in a number of our degree courses enabling students to apply theoretical learning in the work place.

## Enabling work experience: placements and Internships

Work experience is a fixed period of time a student spends with an organisation. This is validated through an assessed piece of work submitted at the end of their work experience.

### Benefits of being a work experience provider:

#### Reduce cost

A flexible low-cost recruitment solution to your business needs

Reduction on expensive recruitment fees

#### Bring new ideas and diversity

A fresh and enthusiastic approach to your organisation

Specific skills and knowledge that can benefit your business

#### Develop your organisation

The chance to secure talented future graduates for your company

The opportunity to devote time to a project which you have not had the resource to do

### For more information contact:

 [placements@uwl.ac.uk](mailto:placements@uwl.ac.uk)

 020 8231 2700/2102



### **UWL offer industry specific careers events that are free to attend.**

These events offer you a unique opportunity to meet students and recent graduates.

*The vast majority of these events are free of charge. All fee-paying services are priced lower than our regional competitors.*

### **Bespoke part-time and graduate recruitment events**

We also welcome you to register for the popular part-time jobs fairs at UWL.

Alternatively, book onto one of the weekly on-campus\* and virtual employer insight sessions.

**For further details please contact:**

✉ [pes@uw.ac.uk](mailto:pes@uw.ac.uk) ☎ 020 8231 2700/2102

*"We aim to produce the sorts of graduates, research and enterprise that will enhance the local, regional, national and international communities we serve."*

Professor Peter John CBE  
Vice-Chancellor

### **Event sponsorship**

Sponsorship is exclusive and each event sponsorship supports employability initiatives such as free 'LinkedIn headshots' for UWL students.

*"A fantastic event! Sevan Multi-Site Solutions UK was proud to sponsor the Business, Computing & Engineering Careers Fair. Kudos to UWL for continuing to focus on students despite COVID restrictions"*

\*Subject to availability

## 4. Developing people

### Degree Apprenticeships

Higher and degree apprenticeships can be a highly effective way to upskill and retain existing staff or to attract new talent to the organisation.

**Make the most of government funding:**

**If you are a levy-paying organisation**, you can use the funds in your account to pay for apprenticeship training and assessment (up to a funding maximum).

**If you are a non-levy paying organisation**, you can share the cost of apprenticeship training with the government.

**“Employers tell us they are crying out for higher level technical skills and that degree apprenticeships are great for their organisations”** - Jennifer Coupland, Chief executive for the IfATE”

**Support employees to develop skills and knowledge** directly relevant to their jobs.

### Funding for Higher and Degree Apprenticeships

**Did you know...?**

- **For levy-paying employers:** the cost of the course is fully covered by the apprenticeship levy.
- **For non-levy paying employers:** up to 95 % of the training is co-funded by the government subject to funding band maximums.
- **Sharing the levy:** If you are a levy paying organisation you can transfer up to 25 % of the annual value of your levy funds to a non-levy paying company- good to share with your supply chain or a non-for-profit organisation.

### Who we work with:

Some of the organisations we are proud to work with include:

**pladis**

 London Borough of Hounslow

 Queen Mary University of London

**Jacobs**



**SEGA**

**Chubb**



**NHS**  
West London NHS Trust

 **IRi**  
Growth delivered.

If you are interested in higher or degree apprenticeships at the University of West London, please email:

 [Janet.Rowson@uwl.ac.uk](mailto:Janet.Rowson@uwl.ac.uk)







## Learning and development

- **Professional training**  
Our professional training enables professionals to build their learning for career advance.
- **Customised course**  
Our customised courses enable employer to upskill their employees' capability for work excellence.
- **Short courses**  
Our short courses enable individuals to develop their interest in depth.

If you are interested in learning more please email:

 [employer@uwl.ac.uk](mailto:employer@uwl.ac.uk)

*"I liked learning how to interact with physical devices with code. It's a really good introductory robotic course and it's fun."*

Adeyemi

## Accredited training

We stand out because - unlike other institutions we can accredit training, or prior-learning, so your staff can build towards recognised university qualifications.

For more information contact:

 [accreditation@uwl.ac.uk](mailto:accreditation@uwl.ac.uk)

 020 8231 2007

*"I can understand the topic which I have been curious about for a while and the interactive worksheets are very helpful. The course is very helpful and interesting, I would recommend if you have ever been curious about Artificial Intelligence."*

James Skinner







## 5. Growing business

### Knowledge Transfer Partnership (KTP)

#### **What is The Knowledge Transfer Partnership scheme (KTP)?**

The Knowledge Transfer Partnership scheme (KTP) is a national programme which enables businesses to access government funding and university expertise to support strategic projects.

#### **What are the benefits for your business?**

- A KTP allows you to tackle a strategic issue specific to your business
- A KTP gives you a qualified and competent in-house resource to undertake a strategic project at a subsidised rate
- A KTP helps you increase annual profits and market share via innovative products and processes.

#### **Empirical evidence indicates that one to three year projects can:**

- Increase pre-tax annual profits by more than £220,000
- Create up to three genuine new jobs
- Boosts employee skills.

Contact us:  [employer@uwl.ac.uk](mailto:employer@uwl.ac.uk)

### Fresh Minds for Business

Based in The Claude Littner Business School, Fresh Minds for Business is a student-led programme that offers professional-level, not-for profit consultancy services to a wide range of organisations.

Recognised in the Leveling Up Awards 2021 for Extending Enterprise; in making the award Rt Hon Anne Milton celebrated Fresh Minds for bringing “Business and Students together to challenge the status quo and build success. Businesses gain new ideas to improve growth and competitiveness and the programme underlines University of West London’s commitment to be an engine of growth for the local economy

Our clients can range from FTSE-100 companies to sole traders and start-ups.

#### **Benefits include:**

- Find innovative solutions to business challenges
- Test your products using industry-standard facilities
- Tap into SME business support



Contact us today to discover how we can help you:

 [CLBS-Business@uwl.ac.uk](mailto:CLBS-Business@uwl.ac.uk)  020 8209 4307



Fresh Minds for Business,  
the student-based  
consultancy programme  
within The Claude Littner  
Business School won  
the 2021 Levelling Up  
Universities Award for  
Extending Enterprise.

# Westmont Enterprise Hub

**Where thinkers, innovators and  
entrepreneurs connect**

Are you an entrepreneur or business owner? Do you have a business concept but don't know where to start?

Westmont Enterprise Hub, based at the University of West London, can help you design your idea, build your concept and scale your business.

- Access to co-working space with WiFi
- Access to sector specialists
- Access to weekly workshops and networking events with experienced business professionals
- Access to monthly drop in clinics with expert advisors
- Access to business advisory sessions


We have 20+ StartUps, 150+ Members and more than 800 business subscribers.

**Come join, come be part of the Hub.**

 **WestMontHub@uwl.ac.uk**

 **+44 (0)2082310123**

 **Westmonthub.co.uk**

 **@WestmontHub\_UWL**

  **Westmont Enterprise Hub**

 **@westmonthub**





## Research and Enterprise

Our department supports research contract and consultancy for organisations.

### **Contract research and consultancy**

The University can supplement your in-house capability to undertake the research for your business with the specialist expertise.

### **Consultancy**

The University can supplement your in-house capability to undertake the research for your business with the specialist expertise.

To find out more, please contact:

 [employer@uwl.ac.uk](mailto:employer@uwl.ac.uk)

## 6. Enabling industry



We have a network of national and international employers

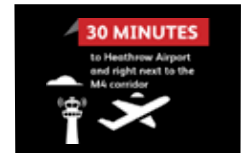


**100%** student satisfaction\* for:

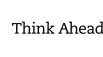
- BA (Hons) Accounting and Finance
- BA (Hons) Business Studies with Marketing
- BA (Hons) Business Studies - Saturday
- Degree Apprenticeship BA (Hons) Business Studies (CMDA) (Standard) Level 6



**50%** of the UK's top 300 companies have HQs within **15 miles** of our campus



Our courses are accredited by the following professional bodies:



## The Claude Littner Business School

The Claude Littner Business School is a leading provider of national and international business and finance education. Our students work in partnership with businesses on real world projects as part of their coursework. We are well connected with the business community, and offer a range of consultancy services to businesses.



## School of Computing and Engineering

Developments in areas that will shape all our futures, such as energy, healthcare, communication, medical care or transport, all depend heavily on engineering and technology. At the School of Computing and Engineering, we provide world class education and research in the fields of computing, built environment and engineering.

\*National Student Survey, 2021 \*\*The Times/Sunday Times Good University Guide 2022







**West London  
Food  
Innovation  
Laboratory  
(WLFIL)**  
EU ESIF funded  
£1.5 million



### Flight Pad

Latest Boeing 737 flight simulator



LGCHT is  
home to the  
HEATHROW  
ARCHIVE

## Superb facilities:

Our award winning  
restaurant and  
industry leading  
kitchen facilities



**100%** student  
satisfaction\*

BA (Hons) Airline and Airport  
Management with Foundation

Links with more than  
400 companies  
and employers  
worldwide



**16** industry  
partners,  
providing  
student scholarships  
or academic research



## London Geller College of Hospitality and Tourism

The London Geller College of Hospitality and Tourism focuses on the education of professionals in the transport, tourism and hospitality sectors. An award winning college, we deliver an outstanding learning experience and connect our students to exciting and rewarding careers.



### INDUSTRY PARTNERS INCLUDE:

- Roland
- Opera
- Holland Park
- Coldstream Guards
- Ealing and Hounslow Music Services
- Apple
- Avid
- Audient
- AMS Neve
- Focusrite
- Native Instruments

We've recently  
invested **£1M+**  
in facilities

**LCM  
LIVE  
PROGRAMME**  
180+ events a year



**18**  
professionally  
designed studios  
including **nine**  
Production Studios



## London College of Music

London College of Music is the largest specialist music and performing arts institution in the UK and celebrated its 130 year anniversary in 2017.

Our students explore every aspect of the music and performance industries. Opportunities include performing, composing, teaching, conducting, broadcasting, recording, live sound production, engineering, music production and management within a variety of art forms.

\*National Student Survey, 2021





**100%** student satisfaction\*: LLB (Hons) with Foundation

**RANKED 15** OUT OF 102 LAW SCHOOLS IN UK 2021

**TOP TEN** NSS STUDENT SATISFACTION LAST 4 YEARS, SECOND IN LONDON, 8TH IN COUNTRY 2020 WITH 100% FOR LLB FOUNDATION.

**An impressive mock courtroom**

Active student societies, with approx. **20** guest speakers and court visits in the last year

**West London Equality Centre (WLEC)**  
Students have had the opportunity to practice law training with WLEC for 30 years, seeing clients and advising on numerous areas of law including employment, family, debt, housing, welfare and immigration.

Strong sector wide contacts with judiciary, solicitors' firms, barristers' chambers, Middlesex Law Society and legal charities

## School of Law

The courses offered within the School of Law, with their distinctive focus on law in action, are delivered by highly qualified staff and designed to provide students with a well-rounded, skills-based and professionally relevant qualification. Our impressive on-site facilities boast a court room, equipped with modern technology including laptops and video equipment for judges/advocates.



**2** Innovative simulation centres in Reading and London are equipped with the latest technology and learning aids as well as a new 'simulance' in London.

**17** Close links with **NHS organisations** – lots of practice placement opportunities

We also partner with **105** private, voluntary and independent (PVI) placement providers.

**1st** for Midwifery in London for overall satisfaction\*\*

**#1** in England for student experience on our nursing courses\*\*\*

**MENTAL HEALTH NURSING**

**4th** IN THE UK FOR OVERALL SATISFACTION\*

**TEF** Gold in the TEF subject level pilot for Nursing and Midwifery.

**Professor Elizabeth Anionwu** named as one of the most influential NHS nurses 1948-2018.

## College of Nursing, Midwifery and Healthcare

We are a major provider of nursing, midwifery, paramedic science, operating department practice, social work and public health courses in West London and Berkshire. Our pre-registration courses which provide eligibility to register with the Nursing and Midwifery Council (NMC) and Health and Care Professions Council (HCPC). Our continuing professional development courses (also reapproved) enable practitioners to maintain and enhance their knowledge and practice at the highest level.

\*\*National Student Survey 2021 \*\*\*The Times/Sunday Times Good University Guide 2022







The  
Chartered  
Society of  
Forensic  
Sciences



accredited by

The  
British  
Psychological  
Society

"We have strong links with professional bodies in the sciences, for example The British Psychological Society and the British Association of Counselling and Psychotherapy (BACP)."

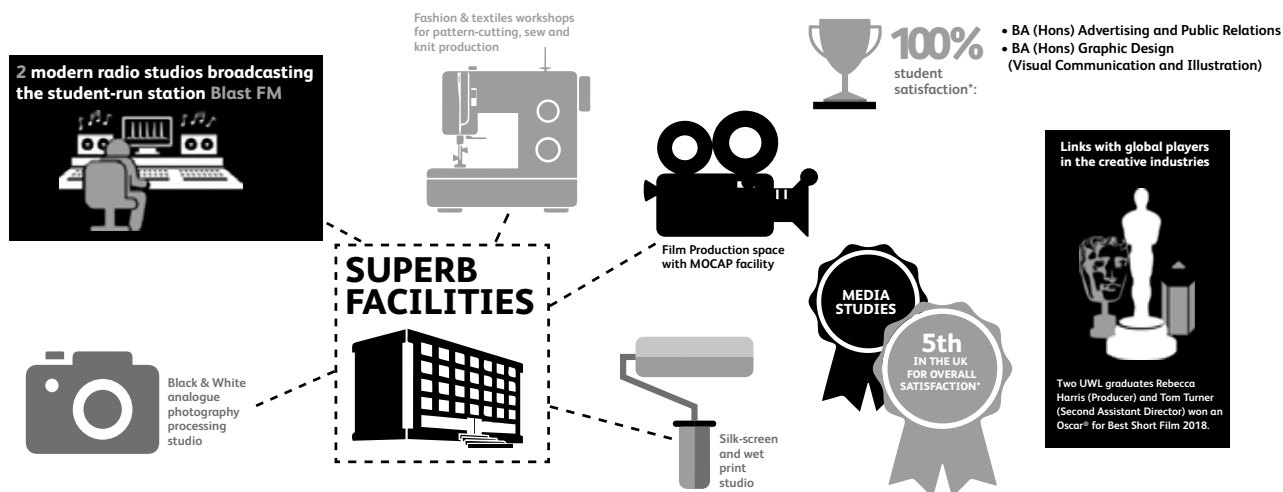


**Modern and specialist research equipment**



## School of Human and Social Sciences

Our courses provide students with an exciting and diverse education in scientific discovery and social and health studies. We offer a full range of awards in the subject areas of psychology, addiction studies, criminology, policing, forensic science, education, nutritional therapy, youth studies and politics and international relations.



## London School of Film, Media and Design

We are a centre of excellence with a vibrant culture of creative learning. Situated in West London, the hub of the UK's creative and media industries, our School is built upon the skills and experiences of our inspirational staff. All of our courses have been developed directly from the experience of our staff working in the creative industries and business.

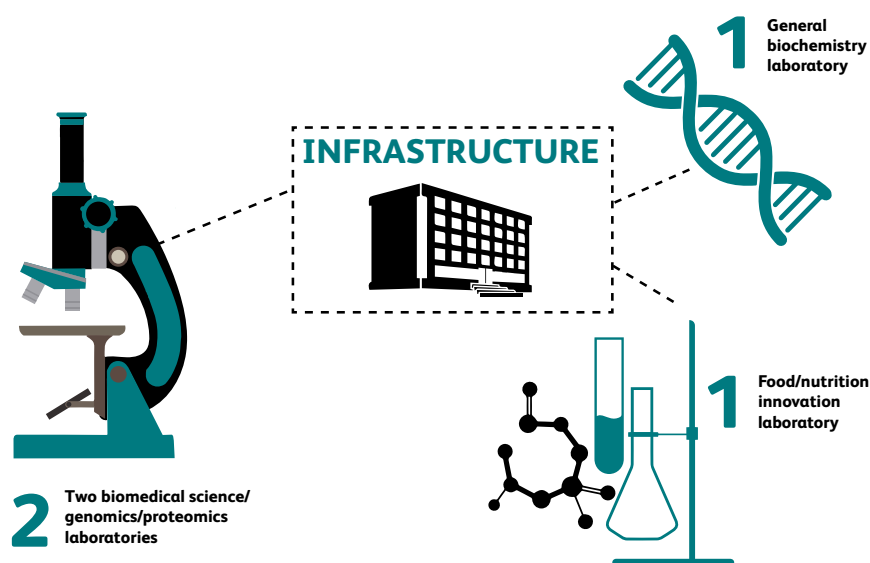
\*National Student Survey, 2021

\*\*The Times/The Sunday Times Good University Guide 2020









## School of Biomedical Sciences

The School of Biomedical Sciences hosts brand new undergraduate teaching facilities for laboratory training together with a state-of-the-art molecular and cell biology research lab. Delivering advanced molecular and computational technologies combined with a clear understanding of how to translate their application, the School aims to impact upon our understanding of and training in contemporary healthcare challenges. The School aims to drive forward enhancements in the diagnosis and management of the “grand challenges” of our time including ageing and dementia; antibiotic resistance and genetic-based diseases.



## Industry Consultative Committees

UWL host Industry Consultative Committees across a range of Industries. Committees are normally held up-to three times per year for UWL academic Schools/Colleges and offer a valuable opportunity to provide and receive reports from your sector and our university respectively.

**If you would like to find out more,  
please contact:**

 [pes@uwl.ac.uk](mailto:pes@uwl.ac.uk)



## 7. Civic engagement

### Award winning alumni community

Produced by UWL graduate Rebecca Harris, *The Silent Child* won an Oscar at the 2018 Academy Awards in Hollywood, in what is an incredible achievement by a former student of the University. On her time at UWL Rebecca said that 'Studying at UWL helped me work out what I was good at, introduced me to the right people and it definitely gave me the tools to help start off my career'.

Get in touch with the Alumni Relations team:

 [alumni@uwl.ac.uk](mailto:alumni@uwl.ac.uk)  020 8231 0188

### Scholarships and Corporate Philanthropy

Thanks to corporate philanthropy we are able to provide a growing number of students each year with scholarships.

- Corporate donors are investing in our students and the future
- Together we help our students as they work their way to a better life
- Financial support enables us to be there when our students need us.

Support for scholarships can form part of your:

Employee benefit programme

Graduate recruitment or talent development programme

Corporate social responsibility

Marketing and PR activity

You can also help our students to achieve their aspirations by making a gift to one of the following areas:

Academic research

Special projects

Unrestricted fund\*

Postgraduate fellowships

Corporate naming rights on facilities

Get in touch with the Development Team:

 [development@uwl.ac.uk](mailto:development@uwl.ac.uk)  020 8231 2627

\*Gifts will be diverted to area of greatest need.





Rebecca Harris,  
BA Film Production Graduate,  
BAFTA Award Winner.

## Closing the opportunity gap

The University of West London is among Britain's most impactful higher education providers in terms of driving social mobility. UWL is now part of a pioneering group of UK universities and businesses striving to set a new and higher standard on boosting social mobility in Britain. The Social Mobility Pledge team have identified UWL as a trail blazer in social mobility helping level up opportunities for all.



Download the full report:

 Closing the opportunity gap



## ACTION TALENT

UWL has partnered with ACTION TALENT, an innovative social enterprise recruitment service with a shared mission to support employers in promoting social mobility, diversity and hire talented UWL graduates.

ACTION TALENT is a 'spin off' from Action West London- a leading West London employment charity. ACTION TALENT is a member of the Recruitment and Employment Confederation (REC) and provides a 'boutique' recruitment service partnering with UWL to source candidates, prepare them for interview with industry leading employers.



 [www.actiontalent.org](http://www.actiontalent.org)

 [info@actiontalent.org](mailto:info@actiontalent.org)

## UWL Graduate Internship Scheme

UWL is providing financial and recruitment support to regional start-ups and SME businesses to hire recent UWL graduates for a 6 month fixed-term period.



### You can access:

- Full and partial funding to hire a recent UWL Graduate
- 6 Month Graduate Internship support for your business
- End-to-end recruitment support

**For more information** on support available, including funding and eligibility email:

 [pes@uwl.ac.uk](mailto:pes@uwl.ac.uk)







## Volunteering and civic engagement

The Volunteering and Civic Engagement Team focuses on enhancing the student experience through making a difference within the university and local community by volunteering with a variety of projects.

To find out more go to:

 [www.uwl.ac.uk/volunteering](http://www.uwl.ac.uk/volunteering)  [theVTeam@uwl.ac.uk](mailto:theVTeam@uwl.ac.uk)



## Pyramid – Building friendships, developing confidence

Pyramid is a long-established and evidence-based early intervention that supports the mental health of children and young people aged 7-14 who are shy, quiet, anxious and withdrawn. Pyramid clubs have supported thousands of children across the UK to have happier childhoods. Many of our students volunteer for Pyramid clubs in schools local to the University and schools further afield can have training to run their own Pyramid clubs under license from the University.

To find out more get in touch:

 [pyramid@uwl.ac.uk](mailto:pyramid@uwl.ac.uk)  07810 853561



\*2016 Deloitte Impact Survey

## Outreach Team

Widening Participation is a government-led initiative to increase the number of people from underrepresented social groups who progress on to further and higher education (HE). At UWL we provide opportunities and specialist projects for people within these groups to experience. By combining knowledge of higher education and careers routes, with insight into industry gained from our network of employers and partners, we challenge preconceptions, raise attainment and help people meet their aspirations.

**If you would like to support our programmes, please get in touch:**

 [www.uwl.ac.uk/outreach](http://www.uwl.ac.uk/outreach)  [outreachteam@uwl.ac.uk](mailto:outreachteam@uwl.ac.uk)



## WInSTEM - Encouraging, supporting and celebrating women in STEM

WInSTEM is a group of academics in the School of Computing and Engineering at UWL. We have a passion for encouraging women and girls to pursue careers in Science, Technology, Engineering and Mathematics (STEM), and particularly our own specialist areas of engineering and technology.

**If you are interesting in finding out more please contact our Outreach Team at:**

 [outreachteam@uwl.ac.uk](mailto:outreachteam@uwl.ac.uk)



# The UWL family

## Drama Studio London

Drama Studio London, part of the University of West London, was established over 50 years ago and is renowned for delivering training for the next generation of actors by current acting professionals.

We are a founding member of the Federation of Drama Schools and are accredited by the Council for Dance, Drama and Musical Theatre (CDMT).



## Ruskin College, Oxford

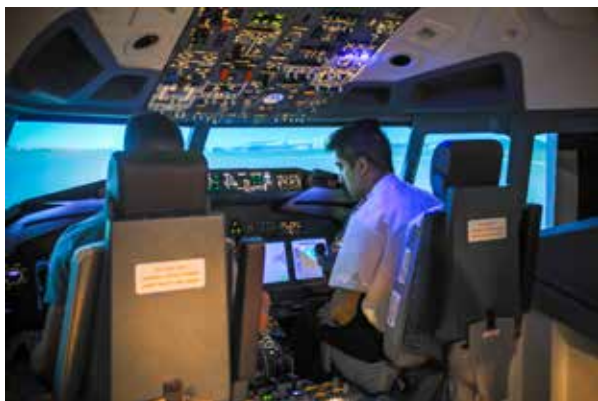
In 2021 Ruskin College became part of the University of West London (UWL) group.

UWL and Ruskin College's history share similar values; widening participation and access to transformation education being central to both institutions.





## 8. Embracing innovation



### FlightPad

To support the development of our commercial pilots and airline and airport students UWL have introduced an industry-standard Boeing 737-800 flight simulator.

**At UWL we are training the next generation of aviation experts.**



### Television Studios and Photography

The TV Studio and Gallery spaces bring to life a range of projects in multiple disciplines and is equipped with lighting grid with DMX lighting control, green and white screens, Ross Crossover Vision Mixer for live editing and audio and video recorder / playback devices.

**Our photography studios are inter-linked to allow for larger shoots, and are equipped with Profoto flash lighting, high-end medium and other tools to produce professional-grade work.**



### Kitchen Space

We have six fully equipped classroom kitchens for different types of cooking. They are ideal for running evening or weekend courses, chef training and competitions.





## Clinical Simulation Centres

Our innovative Clinical simulation centres in Reading and London are equipped with the latest technology and learning aids.

These Clinical Simulation centres are able to replicate theatre, critical care, A&E, midwifery, ward-based and community environments and can also be used for film and television work.



## Simbulance - Paramedic Science

Students benefit from our industry-standard 'Simbulance' - A mock ambulance that offers a fully functioning interior of a London Ambulance Service front-line ambulance.

The Simbulance is ideal for educating the health and social care workforce and can also be used for film and television work.



## Crime Scene Room and Forensic Laboratories

The Crime Scene Room and laboratories provides the opportunity to learn from scenarios based on real-life police investigations, develop analytical skills for assessing blood spatter, DNA evidence and the investigative process.





## Radio Studios

Blast FM broadcasts from two well equipped radio studios that simulate contemporary commercial radio operations.

**The teaching studios accommodate simultaneous broadcasting and teaching.**



## Food Innovation Centre

Can we help you bring a new food or beverage product to the market? Our Food Innovation Centre will offer you guidance, advice, technical support, product development services, customer acceptability testing and sensory analysis to enable the creation of your desired product.

**Product development services, customer acceptability testing and sensory analysis to enable the creation of your desired product.**



## Dance and Yoga Studios

Located at our Ealing site, our contemporary dance studios offer an ideal space for rehearsals, dance or yoga classes for up to 20 people.

**We have small, medium and large studios equipped with wooden sprung floors, ballet bars and mirrors.**



## Mock Courtroom

Used for teaching trial skills, mooting competitions and other advocacy exercises throughout the year. It also gives students the opportunity to participate in mock trials.

**The Mock Courtroom gives a realistic experience of life in the courtroom. The room can also be used for film and television work.**



## The Savoy Suite

This training suite gives future business people a taste of industry, thanks to its board rooms, presentation theatres, video-conference rooms and break-out areas.



## Weston Hall

The perfect venue for conferences, filming and private dining. Our West London campus provides a wide selection of lecture theatres, conference suites and specialist rooms. Weston Hall is the University's beautiful auditorium and is a bright, comfortable and inspiring place to learn in. It can seat over 300 people at conferences, lectures, performances and academic events.



## Paragon Suite

The Paragon Suite is a unique, private meeting space with stunning views of West London located at our Paragon House campus in Brentford. The central part of the suite is a large open area that can host up to 40 delegates with a kitchen area to host refreshments. For breakout space there is an 10-person executive boardroom and a six-person meeting room.

Ideal venue for meetings, conferences, interviews, presentations, filming as well as cocktail receptions and networking events.

**If you would like to book any of our facilities or have any questions or queries please get in touch:**

✉ [venues@uwl.ac.uk](mailto:venues@uwl.ac.uk) ☎ 020 8231 2038 🌐 [www.uwl.ac.uk/venuehire](http://www.uwl.ac.uk/venuehire)





## Pillars Restaurant

Based at our Ealing campus, The Pillars Restaurant is The London Geller College of Hospitality and Tourism's award-winning training restaurant.

It is a specially designed educational environment where students learn the art of fine service and culinary practices. Our highly qualified and experienced lecturers support our culinary arts and hospitality students to ensure our guests enjoy a contemporary and elegant dining experience.

**For opening times, menus bookings and events contact:**

 [pillars@uwl.ac.uk](mailto:pillars@uwl.ac.uk)

 020 8231 2200



## Heathrow Exhibition and Archives

'Heathrow: The Journey', is a permanent exhibition at the University of West London's Ealing site on St Mary's Road.

**Heathrow Archives:** In addition to the Heathrow Exhibition, the University of West London is also home to the Heathrow Archive, a collection of more than 800 artefacts that tell the story of Heathrow's history. Access is by appointment only.

**Admission is free. The exhibition is open daily to students, staff and the public from 10am to 5pm, including weekends and holiday periods. Please note that our opening times are subject to change.**

**For further information please contact:**

 020 8231 2405

**Heathrow**



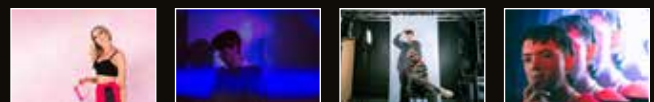
## Securing the next steps in music creation and production



**The University of West London – home of the London College of Music – is now running its own record label with distribution provided by AWAL.**

It offers students a unique space to release new music, while also providing industry experience to music management trainees who work directly with the signed artists.

The move is an incredible opportunity, putting UWL and its students at the heart of the creation and distribution of new music in an industry-leading initiative and celebrating and promoting talent in the performers, musicians and managers of tomorrow.





# London College of Music: Partnerships and Performance Projects

Final year BMus students present a wide range of self-managed projects as part of their performance-based modules. These performances take place at a variety of venues including our own fabulous Lawrence and Vestry Hall along with a number of popular venues across London. The shows are open to the public, and are often used to showcase artists to record company A+R departments and live music promoters.



## Going Global: Our Partnership Programmes

We have around 30 partnerships supporting upwards of 4,000 students, with a focus on globally relevant courses and employability. We have partners in hubs across Europe, the Middle East and Asia including Cyprus, Germany, India, Singapore, Sri Lanka and a branch campus in Ras al Khaimah.





## 9. Research and study

**Our research centres concentrate on socio-economic and creative issues.** Each of our research centres is staffed by experts with an enviable record of publications, conferences, media and public engagement work in their chosen fields.



### Centre for Inequality and Levelling Up (CEILUP)

Established in 2021, CEILUP produces policy relevant research to help shape approaches to addressing inequality in the UK. The centre focuses on developing practical solutions to the challenges that face the UK today related to inequality in social inclusion, employment, education and opportunity.”



### The Cybersecurity and Criminology Centre

The Cybersecurity and Criminology Centre (CCC) was established to examine, analyse and assess current and future criminal threats to individuals, organisations and national security. The CCC is a hub for interdisciplinary research and public engagement in cybersecurity, crime and their intersections.



### European Institute for Person-Centred Health and Social Care

The last decade has brought with it an increasing recognition that chronically ill patients need more comprehensive forms of assistance. This mandates a need to move away from our current approaches to the management of these conditions and towards newer models of care that are personalised, integrated and contextualised.



### The Faringdon Centre for Non-Destructive Testing

The Faringdon Centre for Non-Destructive Testing explores new avenues of research into the development and enhancement of the capabilities of non-destructive testing equipment. The Centre utilises both hardware and software technology in their research and consultancy projects.

The centre specialises in applying ground penetrating radar (GPR) and InSAR Satellite imaging, 3D Laser scanner and airborne radar sensors technology widely recognised as the most advanced in the UK and beyond. Current projects include, health monitoring of ancient trees and woodlands, highways infrastructure (bridges, tunnels, highway pavements), railway foundations and runways and taxiways.



### The Richard Wells Research Centre

The Richard Wells Research Centre conducts primary research focusing on patient safety and fundamental care. In addition, it undertakes systematic and realist synthesis and collaborates in national and international guideline development through its work as an internationally accredited centre for evidence-based practice.



### **Geller Institute of Ageing and Memory**

As the population increases its longevity, the incidence of those living with dementia will increase exponentially. The Geller Institute of Ageing and Memory recognises the pressing need to develop effective psychosocial care to help people live well with the condition.

The Institute will concentrate on a number of inter-connected research strands. Current research in the Institute focuses on: Multi-sensory approaches in dementia care, new technologies and dementia care, ageing and memory, community and home-based approaches, the arts and dementia therapies, person-centred care in complex cases, early onset and location problems and epidemiology of ageing.

Emerging research will be used to inform practice in dementia care at all levels and use for professional staff who work across the sector.



### **The International Centre for Hospitality and Aviation Resilience Management (ICHARM)**

This centre provides an inclusive platform for interdisciplinary impactful research within the context of hospitality, tourism and aviation, focusing primarily at the management of reputation, risk and resilience in these industry sectors. The Centre's goal is to address the most important and pressing issues in hospitality, tourism and aviation.



### **National Centre for Gang Research**

The National Centre for Gang Research has been established to study youth violence and its causes so we can inform and contribute to the wider responses around the issue. Supporting communities and developing interventions that work with and for young people affected by gangs.



### **Policy and Practice Research Institute for Screen and Music (PRISM)**

The Institute focuses on impacting research in the music and screen industries and draws on the University's long history of expertise in film and performing arts.



### **Institute for Policing Studies**

Taking a lead to address a shortage of detectives and ensuring full provision of police education, the Institute for Policing Studies supports training and educating forces across London. The institute oversees Policing degree courses at the University and advances education and research in all areas of crime and policing.

## Undergraduate study

**Studying an undergraduate degree at UWL is all about gaining the skills, expertise and insight you need to excel in your chosen career.** You will be taught by highly experienced industry experts and have the chance to benefit from our close industry connections. It's an exceptional university experience.

## Postgraduate study

**Here for people who want to know more.** A postgraduate degree can enhance your career prospects. If you are considering a new career path, it's a way to enhance and build on your current qualifications, and learn new, essential skills.

## The Graduate Centre

**At the Graduate Centre, we support doctoral students and supervisors and run courses to support their development.** The University of West London welcomes applications from students who wish to study for a PhD or a Professional Doctorate. We publish, on behalf of the University, an academic journal 'New Vistas' which addresses issues of policy, practice and scholarship in higher education.

## The Paul Hamlyn Library

**Our amazing study space in Ealing lets you study in your own way** – there are silent sections, 250 + open-access computers and it is open 24/7.

If you are interested in studying at the University of West London contact:

 0800 036 8888 or visit:

 [www.uwl.ac.uk](http://www.uwl.ac.uk) to request a full prospectus.

## Virtual campus tour

Take a virtual tour of our sites and discover the facilities at our Ealing and Brentford sites in West London, and our Berkshire Institute for Health at Fountain House in Reading town centre.

 [www.uwl.ac.uk/virtual-tour](http://www.uwl.ac.uk/virtual-tour)



## 10. Ten ways to partner with UWL

1

Tap into UWL Graduate Talent Bank (visit page 10)

2

Explore degree apprenticeships (visit page 14)

3

Develop your workforce with accredited professional short courses (visit page 16)

4

Supplement your in-house capability with specialist research and contract consultancy for your business (visit page 21)

5

Register for a sector specific careers fair on campus (visit page 13)

6

Use our specialists facilities and event spaces (visit page 38)

7

Give to student financial support (visit page 30)

8

Use our free business consultancy for SMEs (visit page 18)

9

Develop a Knowledge Transfer Partnership to access funding and university expertise on strategic projects (visit page 18)

10

Become a work experience provider and hire a UWL placement student (visit page 12)

### **Our value:**

To be a career focused, professionally engaged, modern university of quality.

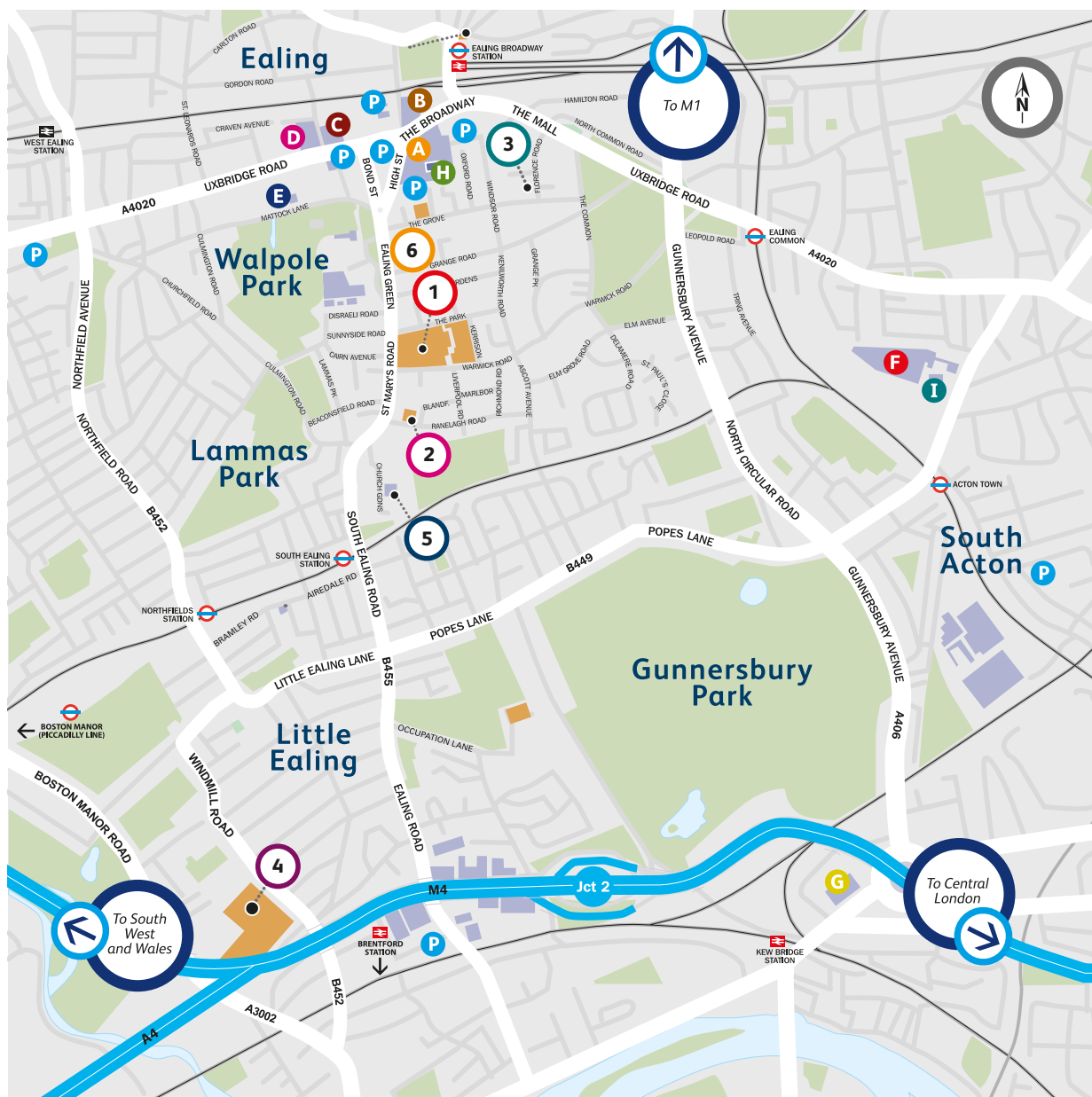
### **Our mission:**

To inspire our students to become innovative and creative professionals connecting them to exciting and rewarding careers.

### **Our commitment:**

Provide exceptional work related career opportunities.

# Ealing and Brentford



## University Buildings

1

### Ealing Site

- Academic Office
- Accommodation Service
- Administration
- Bookshop
- School of Law
- London School of Film, Media and Design
- London College of Music
- London Geller College of Hospitality and Tourism
- Paul Hamlyn Library
- Pillars Restaurant
- School of Biomedical Sciences
- School of Computing and Engineering
- Student Services
- Students' Union

2

### Vestry Hall

- London College of Music

3

### Florence Road Surgery

4

### Brentford Site

- The Claude Littner Business School
- College of Nursing, Midwifery and Healthcare
- School of Human and Social Sciences
- Nursing Simulation Centre

5

### St. Mary's Church

- London College of Music performance venue

6

### Drama Studio London

## Additional Information

- A Broadway Shopping Centre
- B Arcadia Shopping Centre
- C Ealing Town Hall
- D Ealing Civic Centre
- E Questors Theatre
- F Acton Hospital
- G Leisure Centre
- H Library
- I Sports Centre
- P Parking

# Reading



## University Building

1

Berkshire Institute for Health  
Tenth Floor,  
Fountain House,  
2 Queens Walk,  
Reading  
RG1 7QF

## Additional Information

<b>A</b> The Oracle Shopping Centre	<b>E</b> Cinema	<b>I</b> Town Hall and Museum
<b>B</b> Central Library	<b>F</b> Police Station	<b>J</b> Tesco Extra
<b>C</b> Abbey Ruins	<b>G</b> Civic Centre	<b>K</b> The Hexagon
<b>D</b> Royal Berkshire Hospital	<b>H</b> Central Swimming Pool	<b>P</b> Parking







UNIVERSITY OF  
WEST LONDON



*© The University of West London, St Mary's Road, Ealing, London W5 5RF, 2022 All rights reserved. No part of this publication may be used, copied, imitated, reproduced, republished, modified, distributed or transmitted in any form or any means, including photocopying, recording or storing in any medium by electronic means or otherwise, without the prior written permission of the copyright owner (The University of West London).*

The University of  
West London  
St Mary's Road  
Ealing  
London W5 5RF

The University  
of West London  
Boston Manor Road  
Brentford  
Middlesex TW8 9GA

The University of  
West London  
Fountain House  
2 Queens Walk  
Reading RG1 7QF

Tel: 0800 036 8888  
Int: +44 (0)20 8231 2468  
**uwl.ac.uk**