



UNIVERSITY OF
WEST LONDON
The *Career* University



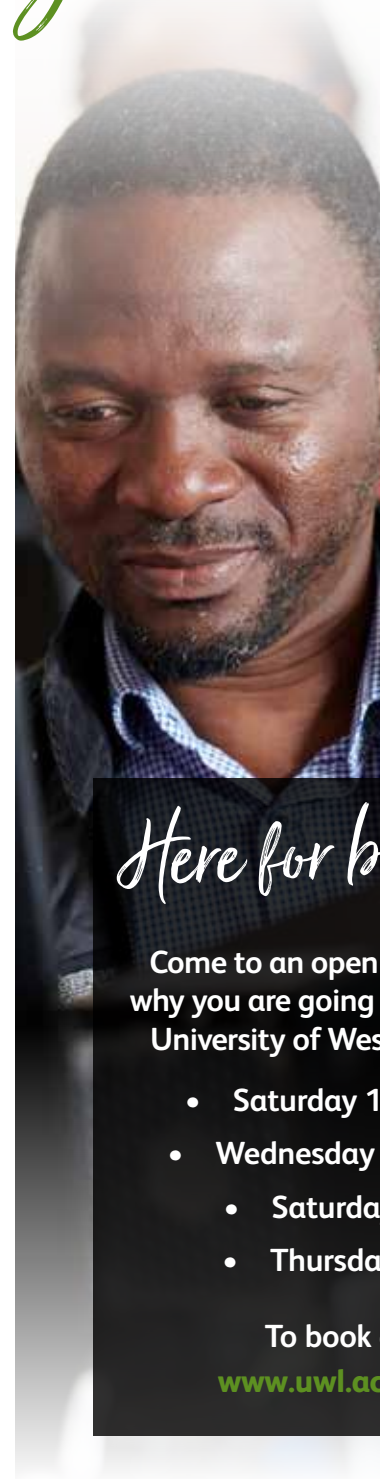
Postgraduate Prospectus
2023 Entry

*Gain the specialist know-how
that gives you the edge!*

A promotion, a career change...



...or a long-held ambition.



Here for better options.

Come to an open evening and find out why you are going to love studying at the University of West London. Visit us on:

- Saturday 12 November 2022
- Wednesday 23 November 2022
- Saturday 15 April 2023
- Thursday 22 June 2023

To book a place, visit

www.uwl.ac.uk/pgopenday

Contents.

Welcome	3
We've been building careers for decades – our history.....	4
Don't just take our word for it – our awards	6
Why study a postgraduate degree.....	8
Here for your future	10
Here for collaborations.....	11
Postgraduate research.....	12
Research degree.....	15
Research centres.....	16
Our Schools and Colleges.....	20
Course Index	32
Making the most of career opportunities	114
Connected for life – Alumni network.....	115
Modern facilities	116
Support.....	120
Our campus.....	122
Accommodation.....	123
Live your best life with the Students' Union	124
Sport and Fitness Centre	126
Welcoming international students.....	128
How to apply and entry criteria.....	130
Fees and finance.....	131
English language requirements.....	132
Entry requirements: symbols key	133
Our locations	135
London campuses	136
Reading campus	138
Some important information	140



"Choosing the right university for your postgraduate studies is one of the most important decisions you will make. We hope this will help you make the best choice."

We aim to inspire you to become a creative professional and connect you to an exciting and rewarding career. Based in the heart of one of the UK's most successful business regions, we have highly qualified staff with a wealth of experience in their respective disciplines and strong connections with key industries.

The University has acquired a remarkable reputation for high-quality education closely linked to employment. Many of our graduates go on to achieve great success within their chosen discipline and professions.

Welcome to the career university.

Professor Peter John CBE
Vice-Chancellor

We've been building careers for decades.

Over the years, leading academic institutions, career-specific training providers and industry specialists have come together to make us what we are today – a university dedicated to your career.

1860

The Lady Byron School is founded, later known as Ealing Technical College and School of Art from 1928. This became the Ealing College of Higher Education from 1975.

1991

The College merged with the Thames Valley College of Higher Education, London College of Music and Queen Charlotte's College of Health Care Studies to form the Polytechnic of West London.

1992

The Polytechnic becomes the Thames Valley University after being granted university status by royal assent.

1994

The University merges with Northwick Park School of Nursing, Riverside College of Nursing and the North West Thames Regional Health Authority's AIDS unit.

1995

The University merges with Berkshire College of Nursing and Midwifery.

2004

The University merges with Reading College and Ealing School of Art and Design.

2010

In July, the University closes its site in King's Road, Reading (now home to Reading College).

2011

In April, we are formally renamed the University of West London to reflect our new focus on the Ealing and Brentford sites. In May, Laurence Geller (a leading figure in the tourism and hospitality industry) is appointed Chancellor.

2015

The Ealing campus undergoes a £100m+ transformation. Now it has a new social area, library, students' union, auditorium, gym, restaurants and cafés, studios for the student radio station and music students, and teaching spaces.

2016

We buy the Brentford site (Paragon) giving us flexibility to grow and thrive.

2017

We invest over £1m in the development of the Paragon Annex studios and open a nursing Simulation Centre at Reading.

2018

Opening of the West London Food Innovation Lab and home to Heathrow Archives and exhibition and Westmont Enterprise Hub for Business Start-Ups.

2019

Opening of Rami Ranger House and the new sports centre. Drama Studio London becomes part of the UWL Group.

2020

Opening of the School of Biomedical Sciences which offers teaching in nutrition, pharmaceuticals or a related industry.

2021

We successfully bid for over £5m of government funding to help improve the environmental sustainability of our operations. Ruskin College became part of the UWL Group.

2022

Almost **80 percent** of our research work has been rated as world-leading (4*) or internationally excellent (3*) in the latest Government assessment of research in higher education.

We have secured the **biggest percentage increase** of any university in the UK for research awarded the two highest ratings.

And for the first time ever, we are in the **top 100** universities in the UK for overall quality of our research

Don't just take our word for it...



No.1 in the UK for Student Satisfaction*

No.1 in the UK for Academic Support**

No.1 in the UK for Student Voice

Top 10 London University
40th University in the UK

The Guardian University Guide 2023

No.23 University in the UK



Top 100 Universities in the UK for overall quality of our research



£150m campus investment.

Our stunning campus has a modern library – with over 200 open-access computers spread across the library including three IT suites, spacious study areas and comfy seating – plus a vibrant Students' Union, bar and restaurant and industry-leading training facilities including mac labs, simulations centres... we could go on!

Surrounded by brilliant businesses.

Our Ealing campus is in the heart of one of the UK's most successful business regions. Through working with high-profile organisations and experienced tutors, we use our strong industry connections to help you gain career-specific insight, expertise and skills.

UWL is going green.

The University is committed to protecting the environment and continually improving our environmental performance. We are working hard to embed a culture of sustainability across our University and become a net zero carbon campus by 2030.

A blend of highly respected Schools.

Our expertise covers a wide range of subjects, so you can gain the specialist know-how that gives you the edge in your chosen career.

Postgraduate community.

Our postgraduate community consists of over 1,000 postgraduate students across nine academic Schools, the Graduate Centre and CELT (the Centre for the Enhancement of Learning and Teaching). We have 11 research centres spanning the arts, STEM, health, education and more. We focus on research that has a positive impact on real-world problems.

* Average of all questions

** Excluding specialists

A postgraduate degree can enhance your career prospects, setting you apart in today's highly competitive job market. If you are considering a new career path, it is a way to enhance and build on your current qualifications and learn new, essential skills. You may also want to explore your passion for, and commitment to, a particular field of study.

Why study a postgraduate degree?

Whatever your reasons, studying a postgraduate degree at the University of West London does not mean you have to put your life on hold, or leave the workplace. Our full and part-time study options can fit around your current commitments. It will also grow your network and help you gain fresh, valuable insights into industry that you might not gain from the workplace alone.

Research degree or taught course?

Research degrees rely on independent study with regular support from supervisors. The best-known research degree is the PhD, which can last three to four years full-time, or five to six years part-time. Professional doctorate degrees are equivalent in status and challenge to a PhD but are intended to create knowledge that advances professional practice. In both PhDs and Professional Doctorates students are asked to research and present new knowledge in a thesis (typically 40,000 to 80,000 words in length, depending on the type of doctorate).

Taught courses are led by tutors, and in common with undergraduate courses, students attend weekly seminars and lectures. There is some independent learning, but not as much as in a research degree.

Professional Doctorates

Studying for a Professional Doctorate is a unique opportunity to turn your career into a qualification. Professional Doctorates are a flexible alternative to traditional PhD study and are aimed at managers and a wide range of practitioners who are experienced and who are working at senior and middle levels of their professions and organisations. It offers the opportunity to research your area of interest and expertise

while continuing to work. Our Professional Doctorate programmes are designed to increase students' capacity to learn from the problems, challenges and achievements that they encounter in their professional practice.

Above all, a professional doctorate is an opportunity to examine contemporary leading theories and research evidence, and to apply these within the professional context.

- Business Administration (DBA)
- Education (EdD)
- Health Studies (DHS)
- Policing, Crime and Security (DPCS)



Postgraduate studies can give you an employment edge, accelerate your progression and open up new paths. We know that everybody has different career goals, so our teaching is tailored to your individual needs as an aspiring professional. Our open, accessible and supportive learning environment ensures that you will thrive.

Here for your future.

Business connections

We are based in the heart of one of the UK's most successful business regions. Our teaching staff are connected to their respective industries with many still active in their field, so they can pass on invaluable insights and specialist subject knowledge.

We have strong connections with many national and multinational organisations such as Heathrow Airport, BBC, Hewlett-Packard (HP) Ltd, Middlesex Law Society and the Savoy Education Trust.

Careers

We offer life long careers and professional development support to all students. This includes a CPD (Continuing Professional Development) programme supported by one-to-one career coaching from our professional Career Consultants available to you at any point in your career journey and at flexible times to suit you. Our CPD events include:

- Professional networking
- Leadership skills
- Self-employment/business start-up
- Negotiation skills
- Working as a researcher.

Volunteering service

We provide a wide range of activities you can access working in our local community. There are projects suited to all interests and tailored to the amount of time you have whether that be a one off or a regular commitment. Volunteering not only helps out our community but it will allow you to make new friends and develop skills and experience which could help your career development. All volunteering is recorded and celebrated at our annual volunteering awards.

Employment Team

When you are ready to start climbing the career ladder, or if you simply need a part-time job while you finish your studies, we can help. We will provide notifications of relevant vacancies, information direct from employers up to international level, and news about upcoming recruitment and employability events.

Work placements

Work placements are for students who are studying an internship programme and can be a great way to show employers that you have the skills, experience and capabilities they are looking for.

Our Placements Team can offer you:

- Career-specific placements with recognised industry leaders
- Regular updates about new placements
- Information about recruitment and employability events.

Professional Teaching Qualification

Students with a teaching role are given the opportunity by the Centre for the Enhancement of Learning and Teaching (CELT) to gain Associate Fellowship of the HEA free of charge. This is a great way to achieve a professional teaching qualification, awarded by an internationally renowned professional body, which is much sought-after by employers. Furthermore, CELT provide professional development opportunities to research students with a teaching responsibility to help them enhance their teaching and/or supporting learning skills.

Here for collaborations.

We have several partners across the UK and abroad.

UK Academic Partnerships

- Academy of Music and Sound
- Collaboration for Leadership in Applied Health Research and Care (CLAHRC)
- Creative Academy
- Linx
- London School of Science and Technology
- Met Film School
- Nexus Institute of Creative Arts.

Overseas Academic Partnerships

- American Education Limited (ANC)
- Aventis School of Management
- Business College Athens
- Cyprus Institute of Marketing
- Marbella International University Centre (MIUC), Spain
- Met Film School, Berlin
- Schweizerische Textilfachschule – (Swiss Textile College – STF)
- Singapore Raffles Music College
- UWL RAK, United Arab Emirates.



We have a growing national and international reputation in practice-based and solution-driven research. It spans areas such as engineering, computing, hospitality, aviation, health, law, film, media, and music.

Postgraduate research.

We focus on producing useful knowledge. Our research centres concentrate on socio-economic and creative issues with a view to generating solutions to social, economic, creative and technical issues.

As a doctoral student, you will be able to study within your School/ College, and in the Graduate Centre. You will take part in School-based research seminars, conferences, and other activities recommended by your supervisors. You will also follow a programme of research training in the Graduate Centre.

You will have the chance to discuss and present your research as you progress through your doctoral journey and to build networks with fellow doctoral students and researchers in your field.

We encourage all our PhD students to present their research and publish during their studies.

All postgraduate research students have access to a dedicated learning space with modern, convenient facilities. We provide space where postgraduate research students can socialise and network, or study and reflect, with convenient facilities including lockers, printing and photocopying, and tea and coffee facilities. We will welcome your application in any of the following subject areas:

School of Biomedical Sciences

- Ageing and Social Well-being
- Ageing, Ethnicity and Health Outcomes
- Antibiotic Resistance/One Health Approach
- Biochemistry
- Bioengineering
- Cancer/Cancer Genomics
- Care Strategies for Dementia
- Cell Biology
- Dementia Care and Technology
- Evidence-based Healthcare
- Healthcare Ethics
- Healthy Ageing and its Determinants
- Infection Control and Prevention
- Information and Communication Technology for Older People

- Integrated Medicine
- Living with Dementia
- Microbial Genomics
- Microbiology
- Microbiome Metagenomics
- Molecular Biology
- Musculoskeletal Biomechanics
- Non-pharmacological Interventions
- Odontogenic and Maxillofacial Bone Tumours
- Person-centred Health and Social Care
- Person-centred Health and Social Care
- Supporting Family Carers in Dementia

The Claude Littner Business School

- Accounting and Finance
- Business and Management
- Leadership and Change
- Economics and Finance
- Risk Management
- Marketing and Global Strategy
- Sustainability.

UWL is ranked in the top 100 universities in the UK for the overall quality of our research.



School of Computing and Engineering

- Applications of Non-destructive Methods in Civil and Environmental Engineering
- Architectural Technology
- Artificial Intelligence
- Built Environment
- Civil/Structural Engineering
- Computer Networking and Distributed Systems
- Computing Interaction Design, Usability and Global Software
- Construction Project Management
- Cybersecurity
- Digital and Audio Engineering
- Fibre Optics and Electronic Engineering
- Geotechnics and Soil Engineering
- Health Monitoring of Highway Infrastructures
- Human Computer Interaction
- Hydraulics and Water Engineering
- Information Security
- Materials and Concrete Technology
- Repair and Maintenance of Buildings and Structures
- Software Engineering.

London School of Film, Media and Design

- Adaptation Studies, Film Studies, Genre Studies, Genre Theory, Popular Fiction
- Architectural Studies
- Creative Writing, Screenwriting
- Filmmaking, Film Theory, Film and Philosophy, Screen Studies
- Gender, Technology and Work
- Media Arts, Art and Design History, Cultural History, Communication Design, Design and Visual Literacies

- Media History and Theory, Media Archaeology, Gallery and Museum Studies
- Media Studies, Media Transformations, Branding, Public Relations, Television, News and Journalism
- Modern Literature, Literary Theory, Literature and Philosophy
- Photography History and Theory, Media and Photography Practice, Photography and Philosophy, Literature and Photography
- Rethinking The Image.

London Geller College of Hospitality and Tourism

- Airline and Airport Management
- Healthy Eating for People with Chronic Conditions (CVD, diabetes, dementia)
- Human Trafficking in Tourism
- New Food and Drink Product Development
- Nutrition for Vulnerable People (children, adolescents and older adults)
- Plant-based Nutrition
- Risk, Resilience and Reputation Management
- Sustainability and Well-being
- Tourism Cities and Mobilities
- Tourism Industry Dynamics and Internationalisation
- Tourist Consumer Behaviour.

School of Human and Social Sciences

Criminology, Policing and Forensic Science

- Forensic Science
- Fraud and Corruption
- Investigative Interviewing
- Police Corruption
- Policing, Racism and Diversity
- Policing Drugs
- Police Governance and Complaints
- Private Security
- Social Justice
- Socio-Legal Studies
- Terrorism and Extremism

Education and Interdisciplinary Studies

- Community/Urban Studies
- Education Policy and Politics
- Global Black Studies, Decolonisation and Social Justice.
- Language in Education
- Sociology of Food
- Sociology and Sociological Theory
- The Role of VR in Education
- Success in Higher Education
- Youth Studies and Youth Justice.

Psychological Sciences

- Attitudes Towards Sexual and Domestic Violence/Honour-Based Violence
- Compulsive Sexual Behaviours in the Digital Era
- Dual Diagnosis (Co-Existing Mental Health and Addictive Disorders): Interventions, Role of Peer Support, Impact of Stigma
- Ethnicity and Inclusion: access and provision of mental health and addiction services
- Gender in the Media



- Health Behaviours
- Identity, Norms and Personality Factors in Addiction
- Mental Health and Resilience
- Public Engagement and Arts-based Methods
- Therapeutic Use of Cannabis Based Products.
- Use of Virtual Reality
- Visual and Multisensory Perceptions and Cognitions.

School of Law

- Commercial Law
- Criminal Justice
- Cyber Crime
- Law Enforcement
- Prosecuting Digital Crimes
- Intellectual Property Law
- International Arbitration
- International Commercial Law
- International Criminal Law
- International Human Rights
- International Investment Law
- International Law of Armed Conflict
- International Organised Crime
- Litigation Finance and Third Party Funding
- Public International Law
- Trusts Law.

London College of Music

- Music/Audio Technology
- Record Production
- Multi-channel and Spatial Playback Formats
- Novel Interface Design, including Haptic Feedback Systems
- Composition
- 21st Century Performance Practices
- The Business of Music Making
- Pedagogy
- Dramatic Arts
- Musicology.

College of Nursing, Midwifery and Healthcare

- Ageing
- Child Health
- Healthcare Epidemiology
- Healthcare Education
- Healthcare Policy and Management
- Infection Prevention and Control and Communicable Disease Prevention Management
- Mental Health
- Midwifery and Women's Health
- Nursing Practice
- Patient Centric Care
- Public Health
- Social Policy
- Social Work
- Translational Medicine.

How to apply

To apply for a PhD, you need to submit a brief research proposal, your CV, the transcript of your highest qualification and an application form. For further information on how to submit your application online visit www.uwl.ac.uk/research/graduate-centre

The proposal helps us assess your suitability for higher degree work, including:

- Viability of the topic as a research study
- Clarity of the topic
- Methodology and the practicalities required for a research degree
- Appropriate supervisor(s) to be appointed to support your research.

Additional Information

For additional information, contact the Graduate Centre at researchdegrees@uwl.ac.uk



Research degree.

Doctor of Philosophy

A candidate for a PhD degree is expected to critically investigate and evaluate an approved topic resulting in an independent and original contribution to knowledge, worthy of publication in complete or abridged form. You must show evidence of your ability to undertake further research without supervision and must also present and defend your thesis by oral examination to the satisfaction of examiners appointed by the University.

A PhD is normally completed in three to four years (full-time) or five to six years (part-time).

Support for research students

When you are registered as a research student, you will be assigned two (sometimes three) supervisors who will guide and support your research. A key aspect to your study will be regular meetings and correspondence with your supervisors and engagement with the activities of the Graduate Centre, including a mandatory programme of research training.

We run an annual conference for doctoral students, where participants are encouraged to present a paper or poster on some aspect of their research. You will also have other opportunities to present your research such as postgraduate student seminars and forums, and seminars within your subject area.

► For more details on becoming a research student at the University of West London, please visit www.uwl.ac.uk/research

Research centres.

Research at the University of West London spans a broad range of fields across the arts, STEM, health, education and more. We focus on research that has an impact on real-world problems, drawing on our close ties with businesses and industries as well as the expertise of our staff.

We have built up particular specialisms in the following five areas. Each of our Research Centres is staffed by experts with an enviable record of publications, conferences, media and public engagement work in their chosen fields.

Geller Institute of Ageing and Memory

The Geller Institute of Ageing and Memory delivers research and education that informs and improves quality of care and support for people living with dementia, their families, and health and social staff caring for them. We examine care across a range of care settings and for a diverse range of people.

The Institute responds to a pressing contemporary health and social care challenge: the need to improve the quality of life and humanity of care for older adults and people living with dementia locally and globally. We are an interdisciplinary team that includes expertise in sociology,

nursing, social policy, psychology, health policy, law, bioethics, epidemiology, and philosophy, hence our research draws upon a wide range of methodologies and is informed by our diverse disciplinary approaches.

Our current research programmes

- Understanding the organisation and delivery of care for people living with dementia during an unscheduled hospital admission.
- The development of psychosocial interventions to promote good practice and improve quality of life for people with dementia and their family carers.
- Exploring the views and experiences of people living with dementia and their family carers on residential respite services, the timing of a move to long term care, and managing continence at home.
- Investigating the influence of social relationships on cognitive, physical and mental health outcomes, and subjective well-being experiences, in older adults. credential

National Centre for Gang Research

The National Centre for Gang Research (NCGR) brings together a diverse group of researchers

who either work in the scholastic discipline of street gang research or have practical and methodological expertise. The NCGR seeks to work outwardly and collaboratively across disciplines with colleagues in academia, practice and government to address the key challenges of urban street gangs and serious youth violence.

Policy and Practice Research Institute for Screen and Music (PRISM)

The Institute focuses on impacting research in the music and screen industries and draws on the University's long history of expertise in film, music, advertising and the performing arts. PRISM is particularly focused on encouraging interdisciplinary research which breaks down traditional barriers in the humanities and social sciences..

CEILUP

The Centre for Inequality and Levelling Up (CEILUP) aims to produce policy relevant research that can shape approaches to addressing inequality in the UK. The Centre will focus in particular on developing practical solutions to the challenges that face the UK in the early 21st century related to inequality in employment, education and opportunity.

Focus on research.



How can we improve continence care for people with dementia in hospital?

Research into continence care for people with dementia in acute hospital settings, carried out by Professor Katie Featherstone, Dr Andy Northcott, and Dr Paula Boddington was discussed at length in an hour-long episode of BBC Radio 4's flagship documentary series 'File on 4'.

The latest research report from the Geller Institute of Ageing and Memory (GIAM), presents findings from an ethnographic study, which examined how best to support the needs of people living with dementia in acute hospital settings.

The detailed report focused on a hidden and often poorly understood aspect of everyday

care, continence care. The study identified, what the authors call, the ingrained practices of 'pad culture', the everyday and routine use of continence pads in the care of people living with dementia, regardless of the needs and abilities of the patient.

The findings were discussed on BBC Radio 4 and Times Radio, and the results of this study are being used to deliver open access training and education to health and social care professionals, and to support improvements in care throughout the NHS.

► For more information visit www.uwl.ac.uk/improving-continence-care



FUNDED BY
NIHR | National Institute for Health Research



The Faringdon Centre for Non-Destructive Testing

The Faringdon Centre for Non-Destructive Testing explores new avenues of research into the development and enhancement of the capabilities of non-destructive testing equipment. Within this context, the Centre carries out research and consultancy work on the applications of non-destructive testing methods and techniques. The Centre utilises both hardware and software technology in their research and consultancy projects.

- Our particular areas of expertise are:
- Health Monitoring and Assessment of Ancient Trees and Tree Roots
 - Health Monitoring and Assessment of Highways, Bridges and Tunnel Structures
 - Mechanical Properties of Ballast Foundations of Railway Tracks
 - InSAR Satellite Imaging.

Institute of Policing Studies

Institute of Policing Studies (IPS) is an exciting new development and reflects the increasing role of Higher Education in the policing community in London and the UK.

The advent of cyber-enabled and cyber-dependent crime has provided fresh policing challenges alongside existing issues appearing in these new contexts. Leadership in policing routinely covers international boundaries and jurisdictions, but the core skills of policing remain.

The Institute will promote these aspects of professional policing while reflecting on the lessons learnt from historic investigations such as the Yorkshire Ripper case, the Steven Lawrence enquiry and modern cases and critical incidents.

The Richard Wells Research Centre

The Richard Wells Research Centre conducts an active programme of research focusing on improving patient safety. The Centre conducts primary research, undertakes guideline development and review and, through its work as an internationally accredited centre for evidence-based practice, carries out comprehensive systematic reviews.

Our particular areas of expertise are:

- Patient Safety and Infection
- Mental Health
- Midwifery and Family Health
- Learning Disability
- Dementia Research.

► For more information visit www.uwl.ac.uk/research/research-centres

Research centres (continued).

West London Food Innovation Centre

With a dedicated analytical chemistry laboratory, a product development kitchen and a sensory suite the Centre conducts research and works with commercial clients to develop exciting new food products and variants, solve food production issues and adopt new practices for an increasingly sophisticated food and drink market.

Cybersecurity and Criminology Centre

The Cybersecurity and Criminology Centre is a hub for interdisciplinary research and public engagement in cybersecurity, crime and their intersections.

The International Centre for Hospitality and Aviation Resilience Management (ICHARM)

This Centre provides an inclusive platform for interdisciplinary impactful research within the context of hospitality, tourism and aviation, focusing primarily at the management of reputation, risk and resilience in these industry sectors.

The Centre's goal is to address the most important and pressing issues in hospitality, tourism and aviation by fostering outstanding research, drawing on cutting-edge ideas and practices and collaborating with leading experts from both the academic and practitioner communities.

European Institute for Person-Centred Health and Social Care

The last decade has brought with it an increasing recognition that chronically ill patients need more comprehensive forms of assistance, mandating a need to move away from our current approaches to the management of these conditions and towards newer models of care that are personalised, integrated and contextualised.

The European Institute for Person-centred Health and Social Care will rapidly signal the University of West London's entry into this new and high profile field of academic enquiry.



Our Schools.



School of Biomedical Sciences.

Prepare for a rewarding career enabling you to make a real difference to human health by studying a course focused on developing practical skills informed by cutting-edge research.

Our School offers a range of exciting and stimulating degrees designed to expand your knowledge, develop your personal and interpersonal skills and enhance your employability.

Whichever course you choose, you will work in an environment that takes you seriously, to help you realise and develop your potential. Our postgraduate degrees prepare you for a wide range of careers in healthcare, biotech industry, teaching and research – whether you want to work in the NHS, in academia, medical research laboratories, pharmaceutical research, the food industry, as a private therapist, in health

education and public health or areas such as international aid and development.

School staff include leading researchers in their fields, in diverse areas including genomics, bioinformatics, pharmacology, person-centred care, ageing, dementia, and translational medicine. As a postgraduate, you will be part of a learning environment that includes cutting-edge research. You will also be part of an interdisciplinary community, sharing relevant modules with students studying other scientific degrees, but also specialising in the area that fascinates you most.

All postgraduate courses include a capstone project allowing students to focus their studies on their respective career goals.

All postgraduate courses include a capstone project allowing students to focus their studies on their respective career goals.



The Claude Littner Business School.

A multi-award winning Business School bringing students and businesses together. Creating unique learning opportunities. Here for enhancing experience and employability.

At The Claude Littner Business School, we believe in creating a learning environment that fosters collaboration. We work closely with an ever-growing number of businesses to support their capability to thrive in a competitive global market. As a student, you can expect to be involved in this work.

Our School is a unique mix of academics and industry professionals, offering you a wealth of knowledge and experience. Whether your interest is in digital business, human resource management, international marketing, finance, capital markets, investment or leadership, we will prepare you to be a highly effective professional in the real world.

We are based in the heart of west London's commercial district, and our strong links with business and professional associations ensure that our students benefit from a career-focused curriculum. We have one of the highest graduate employability rates in the country.

Through industry-based projects students can apply their knowledge and skills to actual real-world problems. Aspiring entrepreneurs can find support to develop their business ideas.



A connected education:

- Providing a seamless transition from education to career.

Enhanced career prospects:

- One of the UK's highest graduate employability rates.



A connected education:

- Ongoing exchange of ideas and leading practice.

Enhanced career prospects:

- Internationally recognised expertise.



School of Computing and Engineering.

Because technology is the catalyst for growth. Here for people who want to lead the way.

Get to grips with the ground-breaking technology that is transforming society and business. Whether you are interested in computer science, software development, security and networking, information systems, artificial systems, information management, engineering (civil, environmental and digital audio) or the built environment; our internationally recognised School of Computing and Engineering is here to help you progress.

Our full-time and part-time postgraduate courses meet the needs of industry and research to provide the perfect forum for exchanging ideas and leading practice in civil engineering, civil and environmental engineering, digital audio engineering, software engineering, construction project management, computer science,

health informatics, artificial intelligence and information systems. We will build on your undergraduate understanding of theory, practice and application, while providing advice, support and collaborative research and knowledge transfer activities.

Our teaching and research expertise in usability, internationalisation, software engineering, analytical and modelling methods is highly regarded and world leading in certain areas. We are confident that we will help you develop one or more specialist practice areas that will increase your employability in the UK and abroad.

We look forward to welcoming you to the School of Computing and Engineering which has recently invested in industry standard facilities and research centres.

“Our Masters courses aim to provide further learning opportunities for students to have a good vision of the knowledge in the industry and be more successful in future career prospects.”

Dr Kourosh Behzadian
Course Leader of MSc Civil Engineering



London School of Film, Media and Design.

Alumni who work in TV, win creative awards and come back to share their expertise. Here for giving you the creative and technical support you need.

Our courses in film, media and design draw on the expertise of our inspirational staff and alumni. We ensure our students leave with the skills and experience they need to thrive in today's industries. Whatever aspect of the creative and media industries you are interested in, we have a wide range of courses that are relevant, exciting and professionally orientated.

Our graduates have gone on to work with organisations such as the BBC, Sky and River Island, among many others, and you may have the opportunity to undertake placements with such organisations.

We are all about professionalism. For us it is an attitude and a way of doing things, and a vital element in gaining employment. If you decide you want to set up your own business, we can give you the entrepreneurial insights you need.

We have created a supportive and well-equipped environment in which you can pursue your interests and passions, and make the most of your time with us.

We look forward to welcoming you to the London School of Film, Media and Design.

A connected education:

- Courses developed and led by experienced and renowned staff and academics.

Enhanced career prospects:

- Employability skills are central to everything we do.



A connected education:

- Supported by guest lectures from industry professionals.

Enhanced career prospects:

- Internationally respected as a provider of industry-relevant courses.

London Geller College of Hospitality and Tourism.

Where real-world experience meets academic rigour. Here for people who want to go places.

London Geller College of Hospitality and Tourism has over 70 years of teaching expertise, the College is accredited by leading professional bodies, including the Institute of Travel and Tourism.

The College attracts tourism, aviation and hospitality teachers of international repute. It also enjoys excellent working relationships with a range of local, national and international organisations.

We aim to provide a high quality tourism and hospitality environment that combines theoretical and hands-on learning. Features include our training restaurant 'Pillars', twice named London Training Restaurant of the Year; tourism and hospitality teaching suites; a flight simulator and a Food Innovation Centre.

We look forward to welcoming you to the London Geller College of Hospitality and Tourism.

"This course allowed me to fast track to a management position with IAG. I now travel extensively around Europe and enjoy a truly challenging and rewarding career in the organisation."

MA International Tourism and Aviation Management student



School of Human and Social Sciences.

Providing skills that will serve you throughout your professional life. Here for people who want to make a difference.

Combining practical teaching with strong links to the wider professional sphere, the School of Human and Social Sciences provides an environment in which you can develop the knowledge, skills and confidence you need for your future academic and professional development. We believe strongly in encouraging students to learn independently, supported by an experienced and committed team of teaching staff.

Our teaching is enhanced by several suites of recently refurbished laboratories, equipped with modern instrumentation. Together, these

enable us to have a wide range of practical sessions in psychology, physiology, biochemistry, chemistry, biology and molecular sciences.

We have strong links with professional bodies in the sciences, including The British Psychological Society (BPS).

We look forward to welcoming you to the School of Human and Social Sciences.



The British Psychological Society Accredited

“As a BPS accredited course the MSc in Health Psychology is both interesting and challenging. It is also great that lecturers at the University of West London are so approachable and helpful. A thoroughly enjoyable experience.”

MSc Health Psychology student

A connected education:

- Supported by experienced and committed staff.

Enhanced career prospects:

- Teaching leads to highly confident professionals.



School of Law.

Supervision and support from people who know the world of legal practice inside out. Here for people who want to do justice to their ambition and skills.

At the School of Law you will join a diverse, supportive community. You will benefit from being taught by dedicated and enthusiastic tutors, who have a wide range of academic, professional and practical skills and experience relevant to the courses they teach. A number of tutors engage in highly specialised academic research, others are professionally focused, having practised as solicitors in city, regional or high street firms, government offices or charities. Some are barristers and magistrates.

We run a range of postgraduate courses, many of which are internationally and commercially focused. If your interest is in qualifying as a solicitor, then you can opt for our LLM or Postgraduate Diploma in Legal Practice.

Our facilities include a mock court room, equipped with leading technology, which brings learning to life and provides the ideal venue for student mooted competitions.

You will have the opportunity to engage in extra-curricular activities to enhance your study experience by joining and participating in the Student Law Society. Society events have included tours of legal institutions, mooted competitions, quizzes, dinners and international study tours.

The University is close to the centre of legal administration and policy in Parliament, the Royal Courts of Justice, the new Supreme Court, the Old Bailey and the Inns of Court. We also have excellent links with legal professionals working in the commercial, high street and not for profit legal sectors.

A connected education:

- Professional guest lectures and hands-on legal experience.

Enhanced career prospects:

- Alumni network and professional contacts providing placement opportunities in small and large solicitors' firms and marshalling.



London College of Music.

Focused courses taught by practising industry experts.
Here for people who want to be heard.

Explore your creative potential at one of the largest specialist music and performing arts institutions in the UK, London College of Music (LCM). Whether you are interested in performance, composition, music technology, performing arts or music management, we are here to help you discover and nurture your talent.

Our ground-breaking courses, delivered with creativity and passion, are respected worldwide and our graduates are in high demand. You will be taught by practising industry experts, while visiting staff from all over the globe bring you fresh perspectives.

Our courses are based in west London, the hub of the UK's music and media business. Depending on your course, you will have access to our recording and production studios, and a multi-functional performance space. We will help you actively engage with networking opportunities, gaining invaluable experience beyond your specialist area of study.

We welcome students who share our passion for music education and exploration.



College of Nursing, Midwifery and Healthcare.

Academic rigour and a strong focus on clinical skills. Here for people who want to deliver the best healthcare. Here for you!

A connected education:

- Access international expertise and networks through visiting staff.

Enhanced career prospects:

- Our ground-breaking courses are respected worldwide.



The College of Nursing, Midwifery and Healthcare offers a wide range of postgraduate pre-registration and professional development courses from PgCerts to doctoral studies. Many of these allow you to fit your studies around work and other commitments.

Our courses are designed to provide a student-centered, stimulating and challenging learning experience, which emphasises empowerment, engagement and mutual respect. We work with a wide range of NHS Trusts and private, voluntary and independent sector partners to offer a diverse range of healthcare

placements for pre-registration courses, ensuring you are job ready.

You will learn in a wide range of settings (i.e. practice, university), working with a variety of people. Our simulation centres equipped with the latest technology, will help you practise/further enhance your clinical skills in a safe environment, whilst being supported by expert dedicated staff. We offer you the chance to learn from highly skilled staff, many of whom conduct leading-edge research in specialist areas.

We look forward to welcoming you to the College of Nursing, Midwifery and Healthcare.

A connected education:

- Our links with NHS Trusts provide excellent learning opportunities.

Enhanced career prospects:

- Our leading simulation facilities will support your learning.

Institute for Policing Studies.

The Institute for Policing Studies (IPS) is an exciting new development within the University. Its creation reflects the increasing role of Higher Education in the policing community in London and the UK.

The policing landscape has changed dramatically over the last decade and police education has changed to meet the new demands of cybercrime, terrorism and to reflect the increasing "social" role that the police play in dealing with victims in the community.

The advent of cyber-enabled and cyber-dependent crime has provided fresh policing challenges alongside existing issues appearing in these new contexts. Leadership in policing routinely covers international boundaries and jurisdictions, but the core skills of policing remain.

The Institute promotes these aspects of professional policing while reflecting on the lessons learnt from historic investigations such as the Yorkshire Ripper case, the Steven Lawrence enquiry and modern cases and critical incidents.

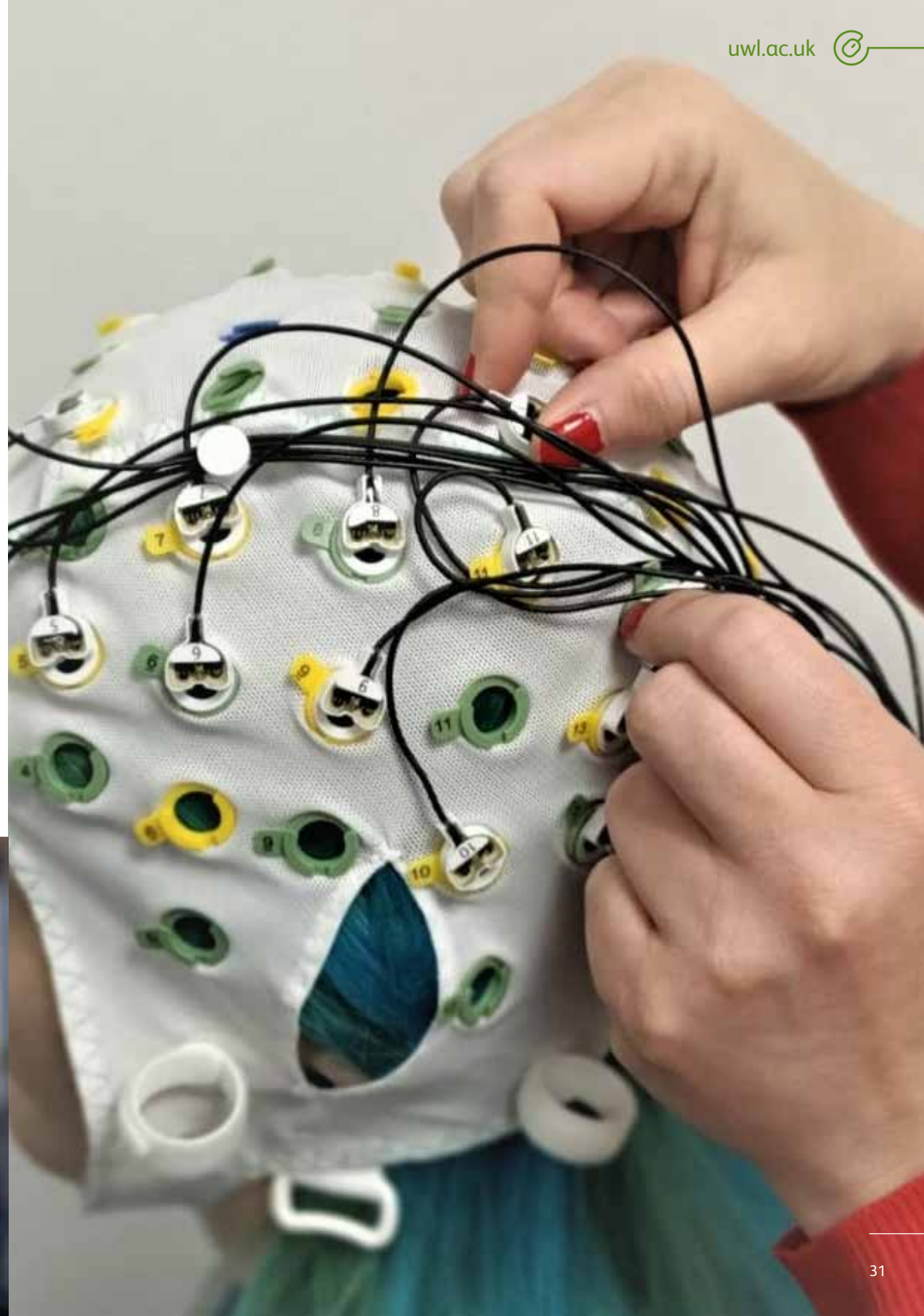
The scale and scope of what officers police in the UK is wide-ranging; from lost children to rural crime, from natural disasters such as flooding to public order events, from terrorism to dealing with victims of sexual assault and domestic violence. The British model of dealing with a serious crime such as homicide is world-class and the Institute's staff have experience in major investigations in the UK, America, and the Middle East.

A connected education:

- Taught by staff with a strong operational background in policing and extensive academic experience.

Enhanced career prospects:

- We pride ourselves on bridging academia and practical policing.



Course index.

School of Biomedical Sciences.

MSc/MSci Applied Biomedical Science.....	39
MSc Bioinformatics.....	42
MSc/MSci Bioinformatics Genomics.....	43
MSc Bioinformatics Scientist.....	44
MSc/PgDip/PgCert Dementia Studies: Contemporary Approaches to Practice.....	57
MSc/MSci/PgCert Genomics Counselling.....	67
MSc/MSci/PgDip/PgCert Genomics Medicine.....	68
MSc/MSci Molecular Pathology.....	91
MSc Person-centred Health and Social Care.....	103

The Claude Littner Business School.

MSc Business Analytics.....	46
MSc Digital Marketing.....	60
MSc Finance and Accounting.....	63
MSc Finance and Economics.....	64
MSc Finance and Risk Management.....	65
MA Human Resource Management.....	72
PgDip Human Resource Management.....	73
MSc International Business Management.....	81
MBA Masters in Business Administration.....	89
MA Strategic Financial Management.....	110

School of Computing and Engineering.

MSc Applied Project Management.....	40
MSc Artificial Intelligence.....	41
MSc Civil and Environmental Engineering.....	47
MSc Civil Engineering.....	48
MSc Construction Project Management.....	52
MSc Cyber Security.....	56
MSc Digital Audio Engineering.....	58
MSc Health Informatics.....	70
MSc Information Systems.....	76
MSc Information Systems (Integrated).....	77
MSc Mathematics and Statistics.....	90
MSc Software Engineering.....	109
MSc Structural Engineering.....	111

London School of Film, Media and Design.

MA/PgDip Advertising, Branding and Communication.....	37
MA/PgDip Brand Design and Innovation.....	45
MA Creative Communications Entrepreneurship.....	53
MA Creative Media Entrepreneurship.....	54
MA Fashion Entrepreneurship.....	62
MA Interior Environment Design.....	78
MA International Fashion Brand Management.....	82

London Geller College of Hospitality and Tourism.

Executive MSc Air Transport Operations and Management.....	38
MSc Digital Hospitality and Travel Leadership.....	59
MSc Food Business Management.....	66
MA International Tourism and Aviation Management.....	84
MA Luxury Hospitality Management.....	88

School of Human and Social Sciences.

MA Criminology.....	55
MA Global Black Studies, Decolonisation and Social Justice.....	69
MSc Health Psychology.....	71
MSc Psychology Conversion.....	105

School of Law.

LLM International Banking and Finance Law.....	79
LLM International Business and Commercial Law.....	80
LLM International Studies in Intellectual Property Law.....	83
LLM Legal Practice Course (LPC).....	85
PgDip Legal Practice Course (LPC).....	86
LLM Legal Practice (Top-up).....	87

London College of Music.

MA Advanced Music Technology.....	35
MMus Composition.....	50
MMus Composition for Film and Television.....	51
MMus Electronic Music Composition.....	61
MA Music and Performing Arts Education.....	92
MA Music Industry Management and Artist Development.....	93
MMus Performance (Classical, Jazz, Popular).....	102
MA Record Production.....	108
MA Theatre and Performance Practice.....	112

College of Nursing, Midwifery and Healthcare.

MSc Advanced Clinical Practice.....	34
MSc Advancing Professional Practice.....	36
MSc/PgDip/PgCert Clinical Practice.....	49
MSc Improvement Science.....	74
MSc/PgDip/PgCert Infection Prevention and Control.....	75
Professional Doctorates.....	94
PgDip Nursing (Adult) (Pre-registration).....	95
MSc Nursing (Adult) Blended Learning (Pre-registration).....	96
PgDip Nursing (Learning Disabilities) (Pre-registration).....	97
MSc Nursing (Learning Disabilities) Blended Learning (Pre-registration).....	98
PgDip Nursing (Mental Health) (Pre-registration).....	99
MSc/PgDip Nursing (Top-up).....	100
MSc Paramedic Science (Pre-registration).....	101
MPH Master of Public Health.....	107

Institute for Policing Studies.

MSc Policing.....	104
-------------------	-----



MSc Advanced Clinical Practice

- **Award**
Masters
- **Duration**
Up to three years (part-time)
- **Start date**
September
- **Location**
West London Campus/
Berkshire Institute for Health
(Reading)

This course has been designed for experienced UK registered healthcare professionals, with an advanced clinical focus to their role.

Career options

This Advanced Clinical Practice award will prepare you to undertake an advanced practice role across a wide variety of healthcare settings.

Course overview

This course aims to develop your clinical skills and knowledge to an advanced level. This will empower you to practice with autonomy in your scope of practice and manage complexity in both decision making and clinical presentations. The course will enable you to combine expert clinical skills with research, education and clinical leadership (Advanced Clinical Practice 'four pillars*'); specific to your clinical specialism.

*Multi-professional Framework for Advanced Clinical Practice in England (NHS 2016)

Modules

- The Building Blocks of Transforming your Professional Role
- History Taking and Physical Assessment
- Independent and Supplementary Prescribing
- Diagnostic Reasoning
- Leadership Strategies to Improve the Patient Experience
- Implementing Improvement in Advanced Clinical Practice
- Independence and Autonomy in Advanced Clinical Practice.

Entry requirements

Applicants must be:

- A registered healthcare practitioner with a relevant professional body (NMC/HPC) in the UK and have a minimum of three years post-qualifying experience.
- Working in an appropriate role that will allow the development of advanced clinical practice and have organisational support to undertake the course.

Academic requirements

- All applicants will normally hold an undergraduate degree, or at least 60 credits at Level 6 from a United Kingdom (UK) based university or equivalent.

Entry requirements Please see page 133



Find out more at: uwl.ac.uk/postgraduate

MA Advanced Music Technology



Gain the knowledge and technical skills that you need to work in cutting-edge creative-audio and sound-engineering, from music production to sound design, 3-D audio to sonic art, and software development to audio for games.

Career options

The skills you acquire will give you a career advantage, whether you plan to enter the competitive and constantly evolving music industry, or set out on a career in academic research. Several graduates from our course have gone on to be nominated for and win Grammys, Emmys and an Oscar; work for artists such as Radiohead, Rihanna, Kendrick Lamar, Pharrell Williams and 50 Cent; contribute to major movie and TV soundtracks, and have joined companies such as EA Sports, BBC, MTV and CNN. You will also be well prepared to commence PhD study.

- **Award**
Masters
- **Duration**
One year (full-time)
Two years (part-time)
- **Start date**
January and September
- **Location**
West London Campus

Course overview

You will have access to an enviable range of studio facilities, and will be taught by staff who are actively engaged in the music industry and high-level academic research. The course focuses on topics from advanced music production to the evolving arena of 3-D mixing and recording. It also encompasses software interface programming and offers specialist pathways via game audio or advanced recording.

Our studios are designed to fully professional specifications, giving the opportunity to work on both digital and analogue consoles. There is access to Pro Tools systems with high-end plug-ins, along with other advanced technologies such as analogue modular synthesizers, Kyma and Ambisonics. You will also have the opportunity to conduct Dolby Atmos® immersive-audio work in our 13.1/7.1.4 studio.

Along with diverse technical opportunities, our course is designed with career progression in mind. You will graduate with an enhanced set of skills that will place you at a distinct advantage when entering this competitive industry.

Modules

- Interface Design for Music
- Immersive Audio
- Interactive Music Technology
- Advanced Hybrid Production
- Research Methods
- Masters Project.

Optional modules

One option from:

- Approaches to Recording
- Game Audio.

Application requirements

Minimum 2:1 in a relevant discipline and in addition to your completed application form, you will need to send:

- a portfolio of degree level or professional work accompanied by an explanatory written statement.

Entry requirements Please see page 133



Find out more at: uwl.ac.uk/postgraduate





MSc Advancing Professional Practice

- **Award**
Masters
- **Duration**
Up to four years (part-time)
- **Start date**
September
- **Location**
West London Campus/
Berkshire Institute for Health
(Reading)

Extend your health or social care expertise through this innovative and flexible course, designed for experienced practitioners from a range of disciplines.

Career options

A Masters degree is an established academic pathway for healthcare professionals. This MSc Advancing Professional Practice course has been designed for experienced UK registered healthcare professionals, who are looking towards Masters study to enable them to progress within their professional role.

Course overview

This course aims to develop your professional skills and knowledge enabling you to make a significant contribution to health and social care delivery. You will develop skills in critical appraisal and decision making and you will learn how to design strategies to manage complex scenarios and use evidence to generate innovative and creative solutions in your practice.

Designed to be distinct from the MSc Advanced Clinical Practice, it is aimed at those who are in/moving towards roles in leadership/management, or practitioners who are pursuing a clinical route (intensive care nursing, midwifery practice, mental health nursing or addiction studies).

You can opt for a generic award in Advancing Professional Practice or have the focus of your advanced practice studies recognised through one of the following awards:

- MSc Advancing Professional Practice (Leadership)
- MSc Advancing Professional Practice (Psychosocial Interventions)
- MSc Advancing Professional Practice (Intensive Care)
- MSc Advancing Professional Practice (Midwifery)
- MSc Advancing Professional Practice (Addiction Studies).

Modules

- The Building Blocks of Transforming your Professional Role
- Leadership Strategies to Improve the Patient Experience
- Evidence-based Implementation of Improvement Methods OR Systematic Reviews: Principles and Methods
- Improvement Project OR Systematic Review of Evidence to Inform Professional Practice.

You will choose the remainder of the modules depending on your focus. Examples of optional modules from our portfolio* include:

- Emergency Adult Care
- Improving Treatment Outcomes for Patients with Dual Diagnosis
- Care of the Critically Ill Adult (Enhanced and High Dependency Care)
- History Taking and Physical Assessment
- Independent and Supplementary Prescribing
- Infection Prevention and Control: Developing and Implementing Best Practice
- Care of the Older Person
- Midwives and Critical Care Practice.

*Subject to availability. Please visit our website for the full list of modules.

Application requirements

You should be working as a health and social care professional (usually at least two years full-time or equivalent).

Entry requirements Please see page 133



Find out more at: uwl.ac.uk/postgraduate

MA/PgDip Advertising, Branding and Communication



Build your understanding of brand communication, professional graphic design, and advertising strategy and creativity, and acquire in-demand skills in strategic thinking and communication.

Career options

By the end of the course you will be equipped to create and manage cutting-edge advertising, branding and design campaigns. Future career options include brand and design manager, marketer, client account handler, creative director, senior designer, design team leader, art director, advertising manager, account planner, communications strategist, communications consultant, content creator and manager, as well as client account executive.

- **Award**
Masters/Postgraduate
Diploma
- **Duration**
14 months (MA, full-time)
One year (PgDip, full-time)
- **Start date**
September
- **Location**
West London Campus

Course overview

Our dynamic approach to specialist training reflects the spirit of creative practice within the wider industry. You will not only gain specialist skills and knowledge from your course, but also from working alongside students on other courses.

You will build a professional understanding of a range of evolutionary and revolutionary processes used in today's competitive global environments. These relate to design, advertising processes and the management of communication.

A blended learning environment is at the centre of this inspiring and critically reflective community. Courses are delivered through a range of lectures, seminars, industry visits and group tutorials. There is an emphasis on supporting your independent exploration, reflection and application of ideas. Towards the end of the course, you will develop your own project driven by your new knowledge.

Our full-time students have scheduled teaching and/or activities for up to two days a week, with access to workshops and studios for the rest of the week.

Modules

- Research for the Creative Industries
- Branding
- Advertising
- Innovation
- Professional Creative Contexts
- Masters Project/Dissertation (only for the MA option).

Entry requirements Please see page 133



Find out more at: uwl.ac.uk/postgraduate





Executive MSc Air Transport Operations and Management

- Award Masters
- Duration 18 months (part-time)
- Start date January and September
- Location Online

Expand your knowledge of airlines, airports and the associated support services in a course that fits around your work commitments.

Career options

Acquire real-world skills and knowledge that you can take back to your workplace, allowing you to progress more rapidly into senior managerial and supervisory positions. Learning is also transferable to related industries such as transport, logistics and tourism.

Course overview

This Executive MSc course is designed for busy industry professionals who want to learn and achieve a master's qualification from a leading UK University while continuing their employment duties.

Whether you are looking to broaden and deepen your knowledge of the aviation industry, looking to change careers or looking to enhance and develop your skills to a managerial level, you will receive an exceptional teaching experience from industry-focused academics.

The online block delivery of the course gives you the flexibility to incorporate learning as part of your lifestyle at a pace that is manageable and enjoyable. Teaching is delivered in real-time as a live broadcast and recorded for you to review in your own time.

You will have the opportunity to gain skills and knowledge in contemporary aviation topics such as digital technology, sustainable development and crisis management. You will also have access to online learning resources such as e-books and e-journals and aviation industry and market databases.

The programme offers the opportunity to network and develop contacts with like-minded professionals in different aviation sectors, markets and regions and to share ideas and collaborate.

Modules

- Aviation Research and Study Skills
- Aviation Business Strategy and Finance
- Crisis Management and Business Resilience
- Aviation Applied Research Project.

Optional modules

- Airline Planning and Operations
- Strategic Airport Management
- Sustainable Development in Aviation
- Safety Management and Human Performance
- Engineering and Maintenance Management.

The range of optional modules each year will be subject to availability.

Students will study all the compulsory modules and THREE of the optional modules.



MSc/MSci Applied Biomedical Science*

*Subject to validation



The degree is a Laboratory Medicine profession with a focus on knowledge, reasoning, and skills in pathophysiology and different areas of prevention, diagnosis, and treatment of disease. The course is suitable for learners who want to develop knowledge, skills and behaviours for diagnosing illnesses via the examination of samples in a laboratory setting and communicate information on patients results to the multi-disciplinary care team. Students will develop competencies under the broader aegis of scientific training in cellular pathology, molecular pathology and chemical pathology.

Career options

The course is particularly suitable for students interested in pursuing a career as Biomedical or Clinical Scientists. It is designed to meet the Health and Care Professions Council requirements, as well as the UK Clinical Science Apprenticeship and Occupational standards for registration to practice as a clinical scientist.

- Award Masters
- Duration One year (full-time)
Two years (full-time with placement)
- Start date September
- Location West London Campus

Course overview

On the MSc/MSci Applied Biomedical Science you will develop comprehensive knowledge for using biological and chemical methods to study the chemical processes that take place at the molecular level.

You should acquire skills and behaviours for carrying out complex analyses on specimens of body fluids and tissues, assuring the quality of laboratory medicine investigations, auditing the diagnostic and clinical use, performance of investigations, and developing new and existing tests. Typically, students will study clinical chemistry, endocrinology and cancers of major organs, pregnancy and paediatric biochemistry.

Modules

Core modules:

- Research and Leadership Skills in Laboratory Medicine
- Research Project
- Laboratory Medicine Practice.

Optional modules:

- Genomics Counselling Practice
- Molecular Pathology Practice
- Health and Well-being
- Vocational Competency Evaluation
- Introduction to Genetics and Genomics.





MSc Applied Project Management

(Extended Masters and Internship options available)

- **Award Masters**
- **Duration**
One year (full-time)
Two years (part-time)
20 months (full-time with Internship)
15 months (Extended Masters)
Two years (Extended Masters with Internship)
- **Start date**
January and September
May (Extended Masters)
- **Location**
West London Campus

This course contextualises the practice of project management within specific sectors and provides you with the generic skills and competencies you need to succeed in your business or organisation.

Career options

Project management plays an important role in nearly every organisation, from smaller enterprises through to the largest global corporations. The knowledge and skills you acquire on this course will enable you to take on the role of project manager or become an effective member of a project management team.

Course overview

Over recent years there has been a growing awareness and appreciation of the use of project management techniques in a much wider range of business settings. Organisations recognise that, in order to achieve competitive advantage, the efficiency and success of each and every project is important.

You will develop a thorough understanding of project management principles and techniques, and study their application to a specialist area. Building on seven taught modules, we offer two distinct pathways: Computing, and Enterprise Management. A final dissertation allows for even greater focus on your chosen career sector.

Internship option

The internship element is designed to give you the opportunity to gain valuable work experience and enhance your employability, as well as your personal and professional development. Your dissertation will be based on an eight week period of engagement with an employer.

Modules

To qualify for the award of MSc Applied Project Management, you must study six modules consisting of 20 credits; and a 60 credit dissertation module.

Core modules

- Principles of Project Management
- Strategic Portfolio Management
- Team Dynamics and Leadership
- Project Finance and Marketing
- Research Methods
- Dissertation.

Optional modules

One module from:

- Consultancy and Technical Innovation (Computing Pathway)
- Managing Innovation and Change (Enterprise Management Pathway).

Supporting modules

- Employability Skills and Employment (for Internship students only)
- Learning and Professional Development (for International students only).

Entry requirements Please see page 133



Find out more at: uwl.ac.uk/postgraduate

MSc Artificial Intelligence*

(Extended Masters option available)

*Subject to validation



Artificial Intelligence (AI) and machine learning are general purpose technologies already starting to transform the global economy. These new technologies create the need for skilled engineers to understand their applications and intricacies. The Government's Industrial Strategy identifies AI and data as one of its four Grand Challenges to address to put the UK at the forefront of the AI and data revolution.

Career options

Graduates of the course can expect to achieve well-paid positions in the AI industry such as data scientist, machine learning engineer, software engineer, and product manager.

- **Award Masters**
- **Duration**
One year (full-time)
15 months (Extended Masters)
- **Start date**
September
May (Extended Masters)
- **Location**
West London Campus

Course overview

In its Industrial Strategy, the UK Government has outlined AI and data revolution as one of its four Grand Challenges, to ensure the UK leads the way for the industries of the future. By embedding AI across the UK, the Government aspires to create thousands of high-quality jobs and drive economic growth. The UK is already a world leader in AI and at UWL we want to continue to bolster this upward trend.

There is a growing demand for more qualified graduates in the areas of AI and Machine Learning at MSc level and beyond, as evidenced by the huge increase in job advertisements. The course is tailored to MSc students interested in Artificial Intelligence and Machine Learning methods, theory and application domains. It delivers intensive training in fundamentals of artificial intelligence through a range of specialist modules.

This course will provide students with competencies in AI and Machine Learning that will allow them to pursue careers in either state or private sectors in UK and overseas. As well as learning the technical skills required for this rapidly growing area of computing science, the students will have the chance to explore realistic applications through group and individual projects. The School of Computing and Engineering has contacts with major technology companies and bio-engineering hospital units, perfect for opportunities within industry-initiated and healthcare-related projects.

Undertaking this course will allow you to be at the forefront of this ongoing technological revolution, equipping you with both the theoretical and practical knowledge to work across disciplines and implement AI systems where they are needed.

Modules

To qualify for the award of MSc Artificial Intelligence, you must study six modules consisting of 20 credits; and a 60-credit dissertation module.

- Artificial Intelligence
- Machine Learning
- Deep Learning
- Responsible AI
- Research Methods
- Dissertation.

Optional modules

- Computer Vision
- Big Data Analytics.

Optional modules subject to availability.

Supporting modules

- Learning and Professional Development (for international students only)
- Programming Support.

Entry requirements Please see page 133



Find out more at: uwl.ac.uk/postgraduate





MSc Bioinformatics

- **Award**
Masters
- **Duration**
One year (full-time)
Two years (part-time)
- **Start date**
September
- **Location**
West London Campus

This bioinformatics masters degree bridges the interfaces between genomics, computing and specific industrial practices including healthcare pharmaceuticals, food and agriculture. It aims to equip you with the skills to analyse, interpret and use biological data to inform and improve on service provision, productivity and outcomes. Throughout your studies you will be encouraged to reflect on the ethical, legal and social implications of using genomics data.

Career options

Once you graduate you could go on to a career in one of the following areas, clinical bioinformatics, personalised medicine and wellbeing, agricultural science and research, animal research, academic research, the food industry, public institutions, public health and IT.

Course overview

The course covers core principles in genomics, as well as statistical, computing data management and machine learning skills. It will equip you with the technical ability you need to analyse genetics and genomics data and the underlying associations between gene variants, disease susceptibility, drug response, food, crop yields and reproduction efficiency.

In the Bioinformatics and Data Science for Bioinformatics modules you will work in interdisciplinary teams as much as possible. Together, and individually, you will:

- undertake core practice in sequence and structure analysis techniques and provide you with a strong foundation in omics and NGS analysis. R, Python and Linux
- problem-solve in real healthcare or industry scenarios using bioinformatics and computational analysis

- learn research design and methodologies in bioinformatics
- apply your understanding of genetic variation to disease modelling
- develop an analysis strategy for a new service that builds on your knowledge of genomics, bioinformatics and programming
- apply the relevant statistical and analytical methods to generate new information.

You will learn from experts in computing, healthcare, mathematics and statistics, whose current practice and research will enhance your postgraduate experience.

Modules

Core modules:

- Introduction to Genetics and Genomics
- Bioinformatics and Functional Genomics
- Data Science for Bioinformatics
- Bioinformatics and Genome Analysis
- Bioinformatics Project.

Plus TWO optional modules from:

- Machine Learning
- Information Systems in Healthcare
- Data Management in Healthcare
- Data Architecture and Security
- Big Data Analytics.

Entry requirements Please see page 133



Find out more at: uwl.ac.uk/postgraduate

MSc/MSci Bioinformatics Genomics*

*Subject to validation



This course is a clinical science course focused on training students to develop comprehensive knowledge and competent skills and behaviours for finding the best treatment for a patient based on their unique genetic make-up. The course is suitable for students who want to develop knowledge, the skills and behaviours for analysing biological data including genes, and proteins to support genomics and precision medicine and communicate information on patients results to the multi-disciplinary care team.

Career options

The course is particularly suitable for students interested in pursuing a career as Biomedical or Clinical Scientists. It is designed to meet the Health and Care Professions Council requirements, as well as the UK Clinical Science Apprenticeship and Occupational standards for registration to practice as a clinical scientist.

- **Award**
Masters
- **Duration**
One year (full-time)
Two years (full-time with placement)
- **Start date**
September
- **Location**
West London Campus

Course overview

On the MSc/MSci Bioinformatics Genomics course you will study the application of bioinformatics resources, such as databases and clinical tools to problems in human genetics and genomics, using and or applying skills in programming and data analysis.

You will develop the knowledge and skills to provide bioinformatics support to ensure genomics data received and generated by the laboratory is used in an efficient, standardised, secure and accurate manner using leading edge technologies and adhering to information governance and clinical standards.

You will develop skills to work as part of a multidisciplinary team that includes other clinical scientists, doctors specialising in genetics, specialist nurses, genetic counsellors, IT teams and external providers of software or databases.

Modules

Core modules:

- Research and Leadership Skills in Laboratory Medicine
- Research Project
- Bioinformatics and Functional Genomics
- Introduction to Genetics and Genomics.

Optional modules:

- Genomics Counselling Practice
- Laboratory Medicine Practice
- Molecular Pathology Practice
- Health and well-being
- Data Science for Bioinformatics
- Vocational Competency Evaluation
- Programming Support
- Data Science for Bioinformatics
- Data Management in Healthcare.

Entry requirements Please see page 133



Find out more at: uwl.ac.uk/postgraduate





MSc Bioinformatics Scientist*

*Subject to validation

- **Award**
Masters
- **Duration**
Two years (full-time with Internship)
- **Start date**
September
- **Location**
West London Campus

This degree is a practical industry/clinic-based course that meets the requirement for the Bioinformatics Scientist National Occupational Standards. It offers a great opportunity for you to study for an MSc qualification with Vocational Competency Evaluation (VCE) certification. It is for learners who wish to complete our Bioinformatics training programme through an internship. The course provides you with opportunities to complete both the academic work and industrial/clinical competencies.

Career options

Once you graduate you could go on to a career in several bio-data driven companies including: clinical bioinformatics, personalised medicine and wellbeing, agricultural science and research, animal research, academic research, the food industry, pharmaceuticals, biotech, clinical programming, public institutions, public health and IT.

Course overview

This course offers you the opportunity to study whilst being employed or undertaking an internship in a bioinformatics setting. Thus, enabling you to continue advancing your career as you gain a valuable postgraduate qualification. The course offers an appropriate balance between theory and practice, and the teaching and learning strategies offer learners ample opportunities to demonstrate high levels of analytical, critical and reflective skills alongside professional level of practical skills and knowledge. You will spend a third of your time in placement to complete the industrial/clinical competence. The internship is an assessed part of your course, so all applicants will be expected to find and have confirmed internship places prior to enrolling on this course. The University's careers office provides student support in finding internships.

During your course, you will study the core principles in genomics, as well as statistical, computing data management and machine learning skills. It will equip you with the technical ability you need to analyse genetics and genomics data and the underlying associations between gene variants, disease susceptibility, drug response, food, crop yields and reproduction efficiency. You will learn from experts in computing, healthcare, mathematics and statistics, whose current practice and research will enhance your postgraduate experience.

Modules

Core modules:

- Introduction to Genetics and Genomics
- Bioinformatics and Functional Genomics
- Data Science for Bioinformatics
- Bioinformatics and Genome Analysis
- Vocational Competency Evaluation
- Bioinformatics Project.

Plus ONE optional module from:

- Machine Learning
- Information Systems in Healthcare
- Data Management in Healthcare
- Data Architecture and Security
- Big Data Analytics.

Entry requirements Please see page 133



Find out more at: uwl.ac.uk/postgraduate

MA/PgDip Brand Design and Innovation

You will develop strategic and creative thinking, communication and design research skills, that you will use to create innovative brand design.

Career options

Careers the course could lead to include: communication design, brand interaction and experience, service design, product innovation, art direction, design direction, data visualisation, design research, advertising and creative management.



- **Award**
Masters/Postgraduate Diploma
- **Duration**
14 months (MA, full-time)
One year (PgDip, full-time)
- **Start date**
September
- **Location**
West London Campus

Course overview

In this course, you will use design as a conscious instrument in the creation, development, implementation and maintenance of a brand.

Our course encourages you to consider the value of designing brands in today's highly competitive global environment, where organisations are now being pushed by their audiences, toward authentic and purpose-led promises, products and services.

As a student, you will explore how design drives and responds to revolutionary thinking through questioning the norm and speculating on possible futures and alternative presents. Brands need to respond to consumer needs, aspirations and trends in highly innovative, relational and meaningful ways.

Through our practical modules you will develop brand strategy skills to an advanced level as a designer and researcher. You will explore the design process of creating clear, engaging brand stories through the development of client-based projects.

Modules

- Research for the Creative Industries
- Innovation
- Branding
- Design
- Professional Creative Contexts
- Masters Project/Dissertation (only for the MA option).

Entry requirements Please see page 133



Find out more at: uwl.ac.uk/postgraduate





MSc Business Analytics

- **Award**
Masters/Postgraduate Diploma
- **Duration**
One year (full-time Sept start)
15 months (full-time Jan start)
- **Start date**
January and September
- **Location**
West London Campus

This course has been designed to produce highly skilled, autonomously thinking professionals who can self-assuredly shape a long and successful career in the diverse and continually evolving financial and corporate business industries.

Career options

This course provides a thorough and practical foundation for you to apply your knowledge and skills to complex business projects and make practical recommendations based on real-life business issues. This new Masters course provides a platform for careers with local and international companies and high growth businesses confronting worldwide challenges.

Course overview

The MSc Business Analytics will not only be offering the latest lecture material in the subject area but will go beyond, concentrating on bridging the gap between academic rigour and practical relevance with direct contacts in the industry throughout the course. It will be taught by members of the School's academic community with due care and interest to provide a pastoral approach and a unique hands-on learning experience.

The course embeds and develops the core technical skills and approaches which underpin business analytics training, key processes, and methodologies. There are opportunities at regular points to apply and adapt these acquired techniques through projects, which require these skills to be embodied and integrated holistically.

Research practices, personal reflection and analysis are integrated within modules and focus on developing integral skills for appraising techniques and methodological tools. Learning and development is incrementally monitored across the terms and modules through practical assessments, tutorials and the discussion of written observations and feedback.

By the end of the course, you should be able to:

- apply your knowledge and skills to complex business projects
- demonstrate your acquired technical abilities in business analytics
- conduct independent research
- make practical recommendations on real-life business issues.

Modules

- Business Statistics and Forecasting
- Data Analytics and Predictive Modelling
- Business Analysis
- Digital Tools
- Financial Management for Decision Making
- Programming Skills for Data Analytics Professionals
- Critical Inquiry in Data Analytics and Applied Project.

Entry requirements Please see page 133



Find out more at: uwl.ac.uk/postgraduate

MSc Civil and Environmental Engineering

(Extended Masters and Internship options available)



Complete your technical academic requirements for chartered civil engineer status while enhancing your key skills.

Career options

As a qualified civil engineer with advanced training, you will be in demand by consultancies, construction companies and government departments. Alternatively, you can use this course as the basis for further education (PhD), or a research position.

Professional accreditation

MSc Civil and Environmental Engineering has multiple professional accreditations as highlighted below. Professional accreditation demonstrates course commitment for upholding industry standards, and professional credibility as well as academic quality.

- **Award**
Masters
- **Duration**
One year (full-time)
Two years (part-time and day release)
20 months (full-time with Internship)
15 months (Extended Masters)
21 Months (Extended Masters with Internship)
- **Start date**
January and September
- **Location**
West London Campus

Course overview

The MSc Civil and Environmental Engineering is designed to provide natural postgraduate progression for students from BEng Civil and Environmental Engineering and BEng Civil Engineering. This course is accredited by Joint Board of Moderators (JBM), the Chartered Institution of Water and Environmental Management (CIWEM) and the Chartered Institution of Civil Engineering Surveyors (ICES). Our extensive civil engineering laboratories offer students the best possible facilities for conducting Masters level research.

Internship option

The MSc Civil and Environmental Engineering with Internship option is available to full-time students who attain an average module score of 60% or better. The internship element is designed to give you the opportunity to gain valuable work experience and enhance your employability, as well as your personal and professional development. Your dissertation will be based on a period of engagement with an employer.

Modules

All core modules are 20 credits except the dissertation which is 60 credits. Additional modules are none credit bearing and only applicable for internship students.

Core modules

- Advanced Structural Analysis
- Construction Project Management
- Advanced Geotechnical Engineering
- Advanced Structural Design
- Hydraulic and Environmental Engineering
- Civil and Built Environment Research Methods
- Dissertation.

Additional modules

- Advanced Study Skills (only for internship student)
- Critical Thinking, Analysis and Evaluation (only for internship student).



Find out more at: uwl.ac.uk/postgraduate



Entry requirements Please see page 133





MSc Civil Engineering

(Extended Masters option available)

- **Award**
Masters
- **Duration**
One year (full-time)
15 months (Extended Masters)
- **Start date**
September
- **Location**
West London Campus

This course provides further learning and a pathway to becoming a chartered engineer and expert in your field.

Career options

As a qualified civil engineer with advanced training, you will be in demand in the construction industry worldwide, with employers including consulting engineering companies, contractors, local/national government and utility companies. Alternatively, you can use this course as the basis for further education, or a research position, progressing to study for PhD in Civil Engineering and other technical PhDs in engineering and the built environment.

Course overview

Our course will advance your analytical skills and enhance your practical experience in the core subject areas of civil engineering.

Throughout the course, we will help you to develop your ability to use modern IT skills, modelling techniques to solve complex problems. You will have access to dedicated computing labs and other civil engineering labs including soil mechanics lab, concrete lab, hydraulics lab and non-destructive testing centre as well as a range of digital resources and computer modelling tools. You will also gain an insight into the broader issues of project and process management within the civil engineering field. Application of modern IT techniques to complex problem-solving is a theme that runs through the course. The course will also enable you to use analytical and experimental skills for analysis and design of civil engineering structures under technical uncertainty.

This course is accredited by the Chartered Institution of Water and Environmental Management (CIWEM) as well as the Joint Board of Moderators (JBM). Our extensive civil engineering laboratories offer students the best possible facilities for conducting Masters level research.

Professional accreditation

MSc Civil Engineering has multiple professional accreditations as highlighted below. Professional accreditation demonstrates course commitment for upholding industry standards, and professional credibility as well as academic quality.

Modules

All core and optional modules are 20 credits except the dissertation which is 60 credits. You will need to do 120 credits through taught modules that include four modules and two optional modules plus the dissertation.

Core modules

- Advanced Structural Analysis
- Research Methods
- Advanced Geotechnical Engineering
- Advanced Structural Design
- Dissertation in Civil Engineering.

Optional modules

- Hydro-systems Design
- Construction Risk Management
- Transportation and Highway Engineering
- Construction Project Management.

Additional modules (only for Extended Master)

- Advanced Study Skills
- Critical Thinking, Analysis and Evaluation
- English Support
- Statistics Support.



Entry requirements Please see page 133



Find out more at: uwl.ac.uk/postgraduate

MSc/PgDip/PgCert Clinical Practice



Use this highly flexible course to continue your professional development and prepare for your next promotion.

Career options

Our course improves your prospects in healthcare by providing you with the opportunity to further enhance your clinical knowledge, skills and confidence in your clinical practice.

- **Award**
Masters/Postgraduate Diploma/
Postgraduate Certificate
- **Duration**
Two years (PgCert part-time)
Three years (PgDip part-time)
Up to four years (MSc part-time)
- **Start date**
Flexible
- **Location**
West London Campus/Berkshire
Institute for Health (Reading)

Course overview

This clinically focused course has been developed for UK healthcare professionals who:

- are recently qualified and wish to develop their specialist knowledge and skills
- wish to extend their skill set in a new area of clinical practice.

The flexible structure of the course means it can be tailored to meet your individual needs. You can opt for one of three awards; PgCert, PgDip or the MSc. For the PgCert award you can choose 60 option credits. For the PgDip and MSc awards you can choose 100 option credits (the remaining credits are core and you can opt for an improvement method or systematic review route).

In addition, you can opt to undertake a generic or badged award in one of the following clinical specialisms:

- Independent and Supplementary Prescribing (this named award is only available as a PgCert)
- Acute Care
- Intensive Care
- Critical Care
- Care of the Older Person
- Out of Hospital Care
- Midwifery
- Mental Health
- Psychosocial Interventions
- Urgent Care
- Ophthalmic Care
- Addiction Studies.

Entry requirements

You should:

- be a health or social care practitioner with a current registration with a UK professional body
- normally hold a degree in a health-related subject or social care related subject
- be working in a relevant health or social care environment so that you can meet the learning outcomes of the course.

Modules

We have a wide range of modules to choose from including*:

- Tissue Viability
- Diabetes: Improving Health Outcomes
- Detection of and Response to Clinical Deterioration in the Adult
- History Taking and Physical Assessment
- Independent and Supplementary Prescribing
- Range of Infection Prevention and Control modules
- Leadership Strategies to Improve the Patient Experience
- Care of the Older Person
- Managing Clients with Long-term Conditions
- Range of Addiction modules
- Range of Mental Health modules
- Range of Midwifery modules.

*You will select from a specific list of modules if you chose to work towards a badged award.

Find out more at: uwl.ac.uk/postgraduate





MMus Composition

- **Award**
Masters
- **Duration**
One year (full-time)
Two years (part-time)
- **Start date**
January and September
- **Location:**
West London Campus

Develop advanced compositional skills in concert music through in-depth, specialist training.

Career options

This course equips you with the skills and knowledge you need to pursue a career in roles such as composer, arranger, orchestrator, sound editor, copyist and sound designer, or to continue with further studies on an MPhil/PhD programme.

Course overview

The MMus Composition sits at the heart of the London College of Music. It represents a creative hub for innovative, forward-thinking musical minds that, in the spirit of practice-as-research, join practical composition and academic inquiry. Through an exploration of advanced orchestration, score production, and sophisticated compositional techniques, this course enables you to specialise in applied music composition, while providing an insight into 21st century compositional practices and ideas.

The course gives you excellent opportunities to develop your technical abilities in the fields of composition and orchestration, enabling you to strengthen and refine your own artistic voice and expand your musical and dramatic vocabulary. Similarly, the course offers studio-based work, as well as an exploration of audio and midi programming, which you will be able to implement in your own applied compositions, including screen, digital, film and other collaborative types of work.

Alongside practical exploration, the MMus Composition offers the opportunity to broaden your scholarly knowledge in a variety of composition-related subject areas, such as score analysis, conducting, and interdisciplinary applications, enabling you to converge your academic research towards a supervised Masters Project.

The course welcomes renown visiting guests from the professional world, who provide lectures, workshops and performances for our students. Some names include: Ligeti String Quartet, John Cameron, Jan Reguluski, Peter Fribbins, Gabriele Baldocci, and Alda Dizdari.

Modules

- Practical Composition 1
- Practical Composition 2
- Audio and Midi Production
- Music Score Production
- Professional Orchestration and Arrangement
- Research Methods
- Masters Project.

Application requirements

In addition to your completed application form, you will need to send:

- a portfolio of degree level or professional work, including at least two notated scores
- a written statement.

Entry requirements Please see page 133



Find out more at: uwl.ac.uk/postgraduate

MMus Composition for Film and Television



- **Award**
Masters
- **Duration**
One year (full-time)
Two years (part-time)
- **Start date**
January and September
- **Location:**
West London Campus

Develop advanced compositional skills for film and television through in-depth, specialist training.

Career options

You will complete our course with the skills and knowledge you need to enter the film and television industry with course alumni having gone on to compose music for an impressive list of clients including the BBC, The National Theatre, Sky, Channel 4 and the British Film Institute. Alternatively, you can progress onto further studies on an MPhil/PhD programme.

Course overview

You will deepen your creative and technical practice through the study of compositional techniques and studio-based work. Designed for advanced composers, our course provides in-depth specialist training. We will build on your contextual knowledge of the mainstream repertoire and experience of composition and orchestration.

Along with opportunities to extend your technical skills, the course provides practical specialist modules in advanced orchestration, audio and MIDI production, and live recording and conducting sessions. You will graduate with a set of skills and experience that significantly enhance your prospects within the film and television industry.

Alongside practical exploration, the MMus Composition for Film and TV offers the opportunity to broaden your scholarly knowledge in a variety of composition-related subject areas, enabling you to converge your academic research towards a supervised Masters Project.

The course welcomes renown visiting guests from the professional world, who provide lectures, workshops and performances for our students. Some names include: John Cameron, Marco Biscarini, Evan Rogers, Marco Werba, and Ligeti String Quartet.

Modules

- Practical Composition 1
- Practical Composition 2
- Audio and Midi Production
- Music Score Production
- Professional Orchestration and Arrangement
- Research Methods
- Masters Project.

Application requirements

In addition to your completed application form, you will need to send:

- a portfolio of degree level or professional work, including at least two notated scores
- a written statement.

Entry requirements Please see page 133



Find out more at: uwl.ac.uk/postgraduate



MSc Construction Project Management

(Extended Masters option available)

- **Award**
Masters
- **Duration**
One year (full-time)
Two years (part-time)
15 months (Extended Masters)
- **Start date**
January and September
May (Extended Masters)
- **Location**
West London Campus

Deepen your knowledge and skills in construction project management.

Career options

Advancing your theoretical and practical knowledge in construction project management speeds your career development and opens up new opportunities in a development consultancy, site management and procurement/contracts management.

Course overview

Construction project management is about high performance across the entire project lifecycle. Ensuring projects are finished on time and within budget demands both technical and managerial skills.

Our course covers organisation and people management, advanced process and procurement management, risk management, as well as sustainability, building information modelling (BIM), lifecycle assessment, and future potential technology and innovations in the construction industry.

The course is closely matched to current industry demands and the benchmarks of relevant professional bodies. It is suitable for students with various academic and industry backgrounds in the construction sector. The MSc course structure is made up of six taught modules and one research dissertation.

Modules

- Advanced Construction Procurement and Processes
- Sustainable Development of the Built Environment
- Construction Risk Management
- Research Methods for Civil and Built Environment
- People and Organisation Management in Construction
- Construction Innovation and BIM
- Dissertation.

Entry requirements Please see page 133



Find out more at: uwl.ac.uk/postgraduate

MA Creative Communications Entrepreneurship



Do you have a great idea for a creative business? Our course is designed to support you during the incubation phase of a communication or design start-up and equip you with all the skills you need.

Career options

Whilst most graduates are expected to pursue their ambitions as independent creative professionals, the knowledge you gain on this course will also appeal to a range of employers in the creative industries. Alternatively, you can progress to study for a PhD or an MBA.

- **Award**
Masters
- **Duration**
One year (full-time)
Two years (part-time)
- **Start date**
September
- **Location**
West London Campus

Course overview

Our course is aimed at entrepreneurial graduates and professionals who have studied or are working in an area of creative practice centred around communications or design – whether that is a creative communications collective, a new design brand, or a start-up with a product that enhances society through a design initiative.

The academic element of this course is coordinated with the start-up and prototype development phase of your business. It supports you with research, analysis, the application of knowledge in entrepreneurship, business governance and operation, as well as innovation management and negotiation.

On completion, you should be ready to launch your business, secure funding or make use of your entrepreneurial skills in an established creative innovation organisation.

Modules

- Entrepreneurship Essentials
- Start-up Sector Brief
- Boot Camp – The Plan
- Business Blueprint
- Project.

Entry requirements

- A detailed design and/or communication business idea
- First degree in a design or communication-based discipline.

Find out more at: uwl.ac.uk/postgraduate



Entry requirements Please see page 133





MA Creative Media Entrepreneurship

- **Award**
Masters
- **Duration**
One year (full-time)
Two years (part-time)
- **Start date**
January and September
- **Location**
West London Campus

If you are ambitious to start your own media enterprise, this course will help you create and market your products or services.

Career options

The majority of employers across media production have moved away from permanent employment contracts, towards a culture of short-term, project-specific contracts that favour freelancers, self-employed contractors and independent producers. As well as pursuing your ambitions as independent or freelance production professionals, the knowledge you gain on this course will also appeal to a range of employers in creative media production.

Course overview

Our course focuses on providing ambitious and enterprise-oriented students with the knowledge and skills to operate as independent production professionals for a range of clients, across a wide range of media outputs, and with the agility to adapt to a rapidly evolving media landscape.

We will help you develop advanced skills, aligned to an in-depth knowledge of contemporary media markets and business practices, that will help you realise your ambition of launching a product, service or your own independent business.

On completion, you should have a project portfolio that is ready for commissioning or financing. In addition, you will have gained a comprehensive and critical understanding of media production within competitive markets, plus the ability to critically analyse and evaluate your own strengths and weaknesses as an independent practitioner.

Modules

- Professional Business
- Creative One: Working Ideas
- Professional Business 2: Implementing Plans
- Creative Two: USP, Commissioning and Delivery, plus Preliminary Project Work
- Project.

Entry requirements Please see page 133



Find out more at: uwl.ac.uk/postgraduate

MA Criminology

Specialist badges can be achieved in:

- MA Criminology (Global Crime)
- MA Criminology (Terrorism)
- MA Criminology (Criminal Investigation)



If your interests lie in global security, online security, tackling organised crime and terrorism and other emerging issues of the 21st century justice system, this MA is one of the few to offer you a specialised suite of relevant modules.

Career options

Our course leads to careers in policing and police research, Her Majesty's Prison and Probation Service, the Crown Prosecution Service, the Home Office, intelligence services, policy development and digital/global security. You may also wish to follow an MPhil/PhD programme.

- **Award**
Masters
- **Duration**
One year (full-time)
Two years (part-time)
- **Start date**
February and September
- **Location**
West London Campus

Course overview

You will be encouraged to develop a critical understanding of the key concepts, ideas, and theories that underpin contemporary issues and political debates concerning the wider criminological discipline.

In addition to providing you with subject specific knowledge and understanding, the course also aims to produce graduates with strong transferable skills of research, communication, analysis and creative problem solving, who are well placed to seek employment within relevant sectors.

Depending on your choice of optional modules, you can choose to specialise in one of three pathways (Global Crime, Terrorism or Criminal Investigations), or you can mix and match options and graduate with an MA Criminology without specialisation.

Modules

Compulsory modules

- Criminological Theory
- Applied Criminology
- Research Methods
- Contemporary Issues in Crime and Criminal Justice
- Dissertation.

Optional modules

MA Criminology (Global Crime)

- Cybercrime and Internet Policing
- Financial Crime.

MA Criminology (Terrorism)

- Transnational Organised Crime
- Counter-Terrorism.

MA Criminology (Criminal Investigation)

- Serious and Serial Offenders
- Complex Criminal Investigation.

All optional modules are subject to availability.

Entry requirements Please see page 133



Find out more at: uwl.ac.uk/postgraduate





MSc Cyber Security

(Extended Masters and Internship options available)

- **Award**
Masters
- **Duration**
One year (full-time)
Two years (part-time)
16 months (full-time with Internship)
15 months (Extended Masters)
19 months (Extended Masters with Internship)
- **Start date**
January and September
May (Extended Masters)
- **Location**
West London Campus

The MSc Cyber Security course provides professional education in both the theory and practice of cyber security with excellent coverage to key security disciplines, which enables students to gain comprehensive knowledge and critical skills of cyber security in both technical and human dimensions.

Career options

Cyber security professionals are in high demand. You could work in any setting that is data and knowledge intensive. Roles include chief information security officers, network and computer security engineers, security managers and consultants, penetration testers, security investigators and researchers. Some security experts also work in media, writing articles for magazines and papers.

Internship option only applicable for full-time UK students.
Extended Masters with internship only applicable for May intake full-time UK students.

Course overview

The MSc Cyber Security course is developed in response to the huge demand for cyber security professionals in the UK and worldwide. This course provides a comprehensive understanding of state-of-the-art practice and techniques for cyber security systems development and operations. The course develops students' ability to analyse the legal, social, ethical and professional issues involved in the human aspects of cyber security and be guided by the adoption of appropriate professional, ethical and legal practices. The course is particularly designed to meet industry needs and job market demands and produce graduates who are informed and suitably equipped to meet the needs of the industry. Graduates of this course will have the critical skills and techniques that enable students to take up security related jobs/roles in a rapidly evolving and diverse environment to appropriately solve typical cyber security problems.

This course also develops the necessary research competencies and provides a solid foundation for applied research in cyber security, with which student may go on to do further study like PhD.

This course also develops the necessary research competencies and provides a solid foundation for applied research in cyber security, with which students may go on to do further study like a PhD.

Internship option

The internship element is designed to give you the opportunity to gain valuable work experience and enhance your employability, as well as your personal and professional development. Your dissertation will be based on an eight-week period of engagement with an employer.

Modules

To qualify for the award of MSc Cyber Security, you must study six modules consisting of 20 credits; and a 60 credit dissertation module.

- Fundamentals of Cyber Security
- Machine Learning
- Network and Systems Security
- Research Methods
- Security Operations and Assurance
- Dissertation.

Optional modules

Choose one module from:

- Big Data Analytics
- Digital Transformation and Innovation

Optional modules subject to availability.

Supporting modules

- Employability Skills and Employment (for Internship students only)
- Learning and Professional Development (for International students only)
- Programming Support.

Entry requirements Please see page 133



Find out more at: uwl.ac.uk/postgraduate

MSc/PgDip/PgCert Dementia Studies: Contemporary Approaches to Practice



Dementia Studies: Contemporary Approaches to Practice is an interdisciplinary course that offers cutting-edge knowledge about dementia and developments in care and service provision. The course is designed for all those involved in the delivery of health and social care for people living with dementia.

Career options

Undertaking the course will help you gain the skills and specialist knowledge you will need to become an effective leader in dementia care delivery, service commissioning, voluntary organisations or the charity sector. Alternatively, you could progress to a research or academic role, or continue to a PhD.

- **Award**
Masters/Postgraduate Diploma/
Postgraduate Certificate
- **Duration**
One year (full-time)
Two years (part-time)
- **Start date**
September and January
- **Location**
West London Campus

Course overview

The MSc Dementia Studies: Contemporary Approaches to Practice is designed to help you develop a critical understanding of dementia. The course allows for greater insight into the experience of people living with dementia, their families and the people who care for them.

You will learn about theoretical perspectives, research and practice-based evidence underpinning dementia care and service design across health and social care settings. You will have opportunities to explore and create evidence-based solutions for leading positive changes in practice and improving the lives of people with dementia and their families. Our goal is to empower you to become a progressive leader in dementia care practice and service management.

The course is based within the The Geller Institute of Ageing and Memory (GIAM) at UWL. Our staff are all leaders in dementia research and have substantial experience working and teaching in academic and practice-based settings. The course has been designed to utilise their expertise and offer a range of skills and experiences to support your learning and development as a leader in the field of dementia care.

The MSc course will offer a blended learning approach consisting of classroom teaching, online learning, guided study and self-directed learning. Teaching will be delivered by academics, clinicians, family carers and people with lived experience of dementia.

Modules

- Dementia Policy and Influences in Practice
- Global Perspectives in Dementia
- Dementia: Culture and Society
- Evidence-based Approaches to Dementia in Health and Social Care
- Research Methods in Dementia
- Leadership and Innovation in Dementia Care
- Project Dissertation.

Entry requirements Please see page 133

Find out more at: uwl.ac.uk/postgraduate





MSc Digital Audio Engineering

(Extended Masters option available)

- **Award Masters**
- **Duration**
One year (full-time)
Two years (part-time)
15 months (Extended Masters)
- **Start date**
January and September
May (Extended Masters)
- **Location**
West London Campus

Gain the creative, investigative and critical thinking abilities you need to work in many areas, from music production to machine learning, digital signal processing and semantic audio analysis.

Career options

Your new advanced skills in digital audio hardware and software will be in demand across many industry and research sectors including: archiving, restoration and digital libraries, audio for games, audio for telecommunications, automotive audio, fibre optics for audio, hearing and hearing loss prevention, network audio systems, semantic audio analysis, signal processing for audio, and spatial audio (3D).

Course overview

From music and sound production, media and gaming, mobile devices and streaming, to online media, speech recognising systems and the internet of things (IoT), digital audio is part of modern life. The demand for technical and creative abilities in all these areas is significant.

We will help you acquire real-world technical expertise to innovate, design, develop and operate a range of digital audio systems using appropriate software and hardware. You will graduate with the theoretical and practical knowledge you need to develop a successful career as a digital audio engineer.

Modules

- Mathematics of Signal Processing
- Audio Programming One
- Audio Programming Two
- Digital Signal Processing for Audio Applications
- Emerging Audio Technologies
- Engineering Research Methods
- Audio Engineering Dissertation.

Entry requirements Please see page 133



Find out more at: uwl.ac.uk/postgraduate

MSc Digital Hospitality and Travel Leadership



The course explores the continuously changing world of digital hospitality and travel, with a focus on leadership, disruption, and transformation.

Career options

Our course is designed to equip the next generation of leaders with the knowledge and skills required to exploit disruptive technologies, develop innovative digital travel services and drive your organisation's digital transformation for increased efficiency, profitability, and customer value.

- **Award Masters**
- **Duration**
One year (full-time)
Two years (part-time)
- **Start date**
January and September
- **Location**
West London Campus

Course overview

The MSc Digital Hospitality and Travel Leadership focuses on exploiting digital transformations to improve business and customer service, a key feature of the hospitality and travel sectors.

Although the course includes elements of IT, it is not about developing computer programmes and mobile apps. As you progress through the programme, you will develop an understanding of how technology is helping organisations interact with internal and external stakeholders. This will enable you to adapt to micro and macro changes.

Develop an in-depth understanding of the evolving field of travel and hospitality technology, enhancing your ability to plan and implement new

technologies to enhance traveller and guest experiences.

Moreover, by integrating digital tools and systems into the company's business culture, you will devise strategies for attracting and retaining talent who are fluent in the use of digital tools.

Other than learning about data management, analysis, and the practice of methods used by industry to solve challenges and problems in the hospitality and travel sectors, you will also learn about the leadership traits and skills needed to facilitate an entrepreneurial environment in today's volatile, uncertain, complex, and ambiguous business environment.

This course will increase your agility in managing your businesses and innovating in the digital hospitality and travel ecosystem.

Industry guests will be a feature of this course, bringing to life key aspects of the course.

Modules

- Megatrends Understanding The Future of Hospitality and Travel
- Business Analytics and Decision Making
- Frontier Technology and the Traveller Experience
- Leadership and Talent Management
- Digital Transformation and Business Strategy
- Dissertation/Business Project.

Students will study all the compulsory modules and ONE of the optional modules.

Optional modules

- Agile Entrepreneurship in a Networked Economy Driving Change
- Project Management.

Entry requirements Please see page 133

Find out more at: uwl.ac.uk/postgraduate





The Claude Littner Business School

MSc Digital Marketing

- **Award**
Masters
- **Duration**
One year (full-time Sept start)
15 months (full-time Jan start)
15 months (Extended Masters, full-time)
- **Start date**
September
(Extended Masters – May and September)
- **Location**
West London Campus

Learn how to develop and implement effective digital marketing strategies in this high growth area of business.

Career options

Our course equips you with the skills and knowledge you need to work as a successful digital marketing professional or to run your own digital marketing enterprise. The University of West London has joined forces with The Chartered Institute of Marketing (CIM) to give you the opportunity to gain professional qualifications through the CIM Graduate Gateway.

Course overview

UWL's MSc Digital Marketing is a multi-dimensional and dynamic course designed to deliver a challenging learning experience which would equip you with the knowledge and skills required to become future strategic decision-makers and creative problem-solvers in digital marketing.

Throughout this course, students would learn how to harness digital tools to effectively analyse, communicate and operate in competitive local and global contexts, which would prepare you to be highly successful digital marketing professionals within a rapidly evolving industry.

Though a series of specifically designed, practical hands-on workshops, expert guest speakers, simulations, and industry "live briefs", we provide:

- A modern approach to the teaching of digital concepts, from a broad range of avenues including strategic marketing, leadership, e-commerce, consumer behaviour, social media marketing and designing new paths to purchase on innovative digital platforms

- A thorough curriculum aimed at the optimal utilisation of digital tools, to enhance data analysing and research skills, along with providing insights to improve marketing performance
- Hands on practical learning through modern assessments and industry inspired projects
- The opportunity to develop and further enhance skills like creative problem solving, innovative thinking, and the ability to work independently and as a team to formulate ideas and opinions that drive effective marketing proposals and add value to any global organisation or marketing team
- Knowledge of how the digital customer experience is integral to marketing
- Well-structured and carefully curated course content to enhance different levels of understanding and learning styles

Modules

- Global Brand Management and Leadership
- Strategic Marketing and Psychology in a Digital Era
- Digital Retail Environments – New Paths to Purchase
- Digital Tools
- Content Marketing and Campaign Management
- Innovation, Creativity and Digital Futures

Plus one of the following:

- Digital Marketing Consultancy Project
- Digital Marketing Dissertation.

CIM

Accredited Degree

Entry requirements Please see page 133



Find out more at: uwl.ac.uk/postgraduate

London College of Music

MMus Electronic Music Composition



Develop advanced compositional skills in electronic music through in-depth, specialist training.

Career options

You will complete our course with the skills and knowledge you need to pursue a career in roles such as composer, producer, sound designer and remixer, or to continue with further studies on an MPhil/PhD programme.

- **Award**
Masters
- **Duration**
One year (full-time)
Two years (part-time)
- **Start date**
September
- **Location**
West London Campus

Course overview

Whether your interests lie in electronic dance music or electro-acoustic music, we will support you in deepening your creative and technical practice.

Composition studies include one-to-one tutorials in an area of electronic music of your choice and the development of a portfolio exploring a range of tasks including sampling and synthesis and audio-visual, binaural and large-scale composition. A module in Game Audio provides experience in interactive composition and sound design for video games using specialist game creation software.

You can choose options from a range of subjects including advanced sequencing, production and mixing, 3-D audio, software design using Max to ensure you graduate with skills and experience that will significantly enhance your prospects.

Modules

- Electronic Music Composition 1
- Electronic Music Composition 2
- Game Audio
- Research Methods
- Masters Project.

Optional modules

One module from:

- Advanced Hybrid Production
- Interface Design for Music.

and one module from:

- Combining Sounds
- Immersive Audio
- Interactive Music Technology.

Application requirements

In addition to your completed application form, you will need to send:

- a portfolio of degree level or professional work
- a written statement.

Entry requirements Please see page 133



Find out more at: uwl.ac.uk/postgraduate





MA Fashion Entrepreneurship

- **Award**
Masters
- **Duration**
One year (full-time)
Two years (part-time)
- **Start date**
September
- **Location**
West London Campus

Learn how to develop an industry-aligned fashion business, collaborate with a range of fashion industry partners and establish a network of industry connections.

Career options

Whilst most graduates are expected to pursue their ambitions as independent or freelance fashion professionals, the knowledge you gain on this course will also appeal to a range of employers in fashion. Alternatively, you can progress to study for a PhD or an MBA.

Course overview

Our course is aimed at entrepreneurial graduates and professionals who have studied or are working in an area of the fashion industry centred around fashion design, textiles, accessories or soft furnishings.

The academic element of this course is coordinated with the start-up and prototype development phase of your business. It supports you with research, analysis, the application of knowledge in entrepreneurship, business governance and operation, as well as innovation management and negotiation.

On completion, you should be ready to launch your business, secure funding or make use of your entrepreneurial skills in an established creative innovation organisation.

Modules

- Entrepreneurship Essentials
- Start-up Sector Brief
- Boot Camp – The Plan
- Business Blueprint
- Project.

Entry requirements

- A detailed fashion business idea
- First degree in fashion design or a related field.

Entry requirements Please see page 133



Find out more at: uwl.ac.uk/postgraduate

MSc Finance and Accounting



If you are a finance or business graduate who would like to improve your employment prospects, this course will give you a head start.

Career options

Our course gives graduates the skills to access senior roles in accountancy – for example, financial controllers, audit seniors, financial analysts, and senior accountants. Employers recognise our qualification because the curriculum meets the needs of the profession.

- **Award**
Masters
- **Duration**
One year (full-time Oct start)
15 months (full-time Feb start)
15 months (Extended Masters, full-time)
- **Start date**
February and October
(Extended Masters – May and September)
- **Location**
West London Campus

Course overview

The MSc Finance suite of courses is designed to equip you with the knowledge and technical skills required to meet the needs and demands of the profession and make a more meaningful contribution to the organisations they work for. The various pathways provide you with further opportunities to pursue rewarding careers by exploring areas relevant to their chosen subject specialism.

The MSc Finance and Accounting is an engaging course which develops your strategic thinking and critical understanding of the main principles of accounting, finance, taxation and auditing, including contemporary issues and developments in the profession.

The University's suite of finance courses opens up a range of opportunities in a multitude of industries across the world, and our graduates are currently employed at banks and financial institutions, management consultancy firms, five-star hotel chains and healthcare organisations.

Modules

- Management Skills for Finance Professionals
- Corporate Financial Reporting
- Corporate Financial Management
- Business Statistics and Forecasting
- Tax System and Policy
- Auditing in Practice
- Dissertation.



Entry requirements Please see page 133

Find out more at: uwl.ac.uk/postgraduate





MSc Finance and Economics

- **Award**
Masters
- **Duration**
One year (full-time Oct start)
15 months (full-time Feb start)
15 months (Extended Masters, full-time)
- **Start date**
February and October
(Extended Masters – May and September)
- **Location**
West London Campus

Become a specialist in finance and economics and broaden your career prospects with a course designed to equip you with the knowledge and skills needed to succeed in your role.

Career options

With the MSc Finance and Economics, you could pursue a career in national and international institutions, including governmental authorities, policy-making institutions, financial institutions, research institutes and think-tanks, civil society organisations and non-government organisations (NGOs).

Modules

- Management Skills for Finance Professionals
- Corporate Financial Reporting
- Corporate Financial Management
- Business Statistics and Forecasting
- Economic Theory and Practice
- Quantitative Approaches to Economic Analysis
- Dissertation.

Course overview

The MSc Finance and Economics course equips you with the economics and financial knowledge and skills required to build a strong career in the business and finance sectors. Through specialist modules such as quantitative approaches to economic analysis, and economic theory and practice, you should be able to address strategic challenges faced by business organisations operating in competitive national and global markets.



Entry requirements Please see page 133



Find out more at: uwl.ac.uk/postgraduate

MSc Finance and Risk Management



Build on your strong academic record with the skills and knowledge you need to succeed in the growing area of financial risk management.

Career options

The demand for finance professionals who understand risk management principles has never been greater. Once you graduate, you could go on to be a Risk Analyst, Investment Consultant, Finance and Risk Analyst, Risk Manager, Strategy Consultant or Risk Adviser.

Course overview

The MSc Finance and Risk Management course provides a well-grounded knowledge and understanding of key concepts and principles that support and inform corporate financial and strategic decision-making and is best suited for those interested in investments and portfolio management.

This courses opens up a range of opportunities in a multitude of industries across the world, and our graduates are currently employed at banks and financial institutions, consultancy firms, hospitality firms and healthcare organisations.

Modules

- Management Skills for Finance Professionals
- Corporate Financial Reporting
- Corporate Financial Management
- Business Statistics and Forecasting
- Financial Risk Management
- Managing Credit Risk
- Dissertation.

- **Award**
Masters
- **Duration**
One year (full-time Oct start)
15 months (full-time Feb start)
15 months (Extended Masters, full-time)
- **Start date**
February and October
(Extended Masters – May and September)
- **Location**
West London Campus

Entry requirements Please see page 133



Find out more at: uwl.ac.uk/postgraduate



MSc Food Business Management

(Internship option available)

- **Award**
Masters
- **Duration**
One year (full-time)
18 months (full-time with internship)
Two years (part-time)
15 months (Extended Masters, full-time)
21 months (Extended Masters with internship, full-time)
- **Start date**
January and September,
May (Extended Masters)
- **Location**
West London Campus

Acquire the higher-level skills you need to design, manage and lead developments within the food industry.

Career options

Your enhanced prospects across food and hospitality include roles within food service providers, manufacturing, environmental and societal pressure groups, food and health organisations, operational management and logistics, new product developer, food preparation, and finance and costings. Expect to start with a junior management position and make rapid progress to a middle management or senior position.

Course overview

Our course creates links between academic theory and practice, and leading food and hospitality businesses. It will enable you to approach business challenges from a global perspective, integrating academic and technical knowledge. You will be able to create innovative solutions to champion food businesses and develop action plans based on rigorous theoretical frameworks to effectively manage change in your workplace.

The dissertation route enables you to research in depth an area of interest to yourself within the field of food business management. There is also an opportunity to use the facilities of the Food Innovation Centre for the Research Project.

The internship route incorporates

a 30-week period of paid work experience, allowing you to add a practical dimension to your studies and understand the demands of workplace supervision and management. Internship opportunities exist throughout the food service industries, both within the UK and overseas. The internship process is coordinated by the University's own dedicated internship team and draws upon contacts within industry.

Modules

- Business Performance Analysis
- Responsible Value Chain Management
- Applied Food Science and Product Development
- Food and Society
- Food Service Operations Analysis
- Designing the Customer Experience or Nutrition Through Life Stages.

Dissertation route

- Research Project.

Internship route

- Researching Food Organisations
- Internship – it is the student's responsibility to find their internship, with support from the Placement Team. Any student unable to secure an internship will automatically be transferred to the Dissertation route.

The internship route for this course is currently open to UK students only; please refer to www.uwl.ac.uk/course/postgraduate/food-business-management for updates.



MSc/MSci/PgCert Genomics Counselling*

*Subject to validation



This course is aimed at individuals who plan to work directly with patients and families offering genetic/genomic information and support allowing them to make health decisions. You will study the process of investigating individuals and families affected by or at risk of genetic disorders to help them understand and adapt to the medical, psychological and familial implications of genetic contributions to disease.

Career options

The course is particularly suitable for students interested in pursuing a career as a genetic counsellor or genomics healthcare practitioner. It is designed to meet the UK Genetic Counsellor Registration Board (GCRB) Sets 'A & B' educational requirement to submit a Notification of Intention to Register with the GCRB, the European Board of Medical Genetics (EBMG Genetic Counsellors division) educational requirement to submit a Notification of Intention to Register with the EBMG, as well as the UK Clinical Science Apprenticeship and Occupational standards for registration with the HCPC as a clinical scientist.

- **Award**
Masters/Postgraduate Certificate
- **Duration**
12 months (full-time)
24 months (with internship/ placement)
- **Start date**
September
- **Location**
West London Campus

Course overview

Our MSc in Genomics Counselling provides a solid grounding in human genomics, genetics, clinical interface of bioinformatics, Assessments and Management skills in Genetics and Genomics of cancers, common and rare diseases, Pharmacogenomics, Health and well-being, leadership, clinical decision-making and counselling skills.

The course is available with internship/ placement. The PgCert is suitable for GCRB Set B registration by qualified professional degree holders like nurses, midwives, GPs, Pharmacists, Physician Assistants, Dieticians who have current professional registration.

Modules

Core modules:

- Research and Leadership Skills
- Research Project
- Genomics Counselling Skills and Practice
- Introduction to Genetics and Genomics
- Precision Medicine – Cancer, Rare and Common Diseases.

Optional modules:

- Bioinformatics and Functional Genomics
- Health and well-being
- Understanding Dementia
- Dementia in Society
- Dementia care and Management.





MSc/MSci/PgDip/PgCert Genomics Medicine*

*Subject to validation

- **Award**
Masters/Postgraduate Diploma/Postgraduate Certificate
- **Duration**
12 months (full-time)
24 months (with internship/
placement)
- **Start date**
September
- **Location**
West London Campus

This course covers all aspects of genomic science and precision medicine. It equips participants with the knowledge, skills and behaviours to understand and interpret genomic data, and apply to the diverse clinical practice, medical, nursing and allied health research. The course is aimed at individuals with backgrounds from basic science to all levels of healthcare, who plan to improve disease risk assessment, selection of therapy and drug dosing, review of treatment or medication and prevention of potential adverse effects and unnecessary expensive tests and procedures.

Career options

The course provides training in genomic technologies and their interpretation within a medical context. It provides career opportunities for a range of professions, from laboratory-based researchers to diagnostic and healthcare professionals including clinical diagnostics, clinical trials, scientist training programme, bioinformatics, laboratory research assistant, and postgraduate medicine and PhDs.

Course overview

Genomic Medicine is a medical discipline that involves using genomic information about an individual as part of their clinical care (eg for diagnostic or therapeutic decision-making) and the health outcomes and policy implications of that clinical use.

On this course, you will develop practical knowledge and skills in addition to the robust intellectual underpinnings of a master's degree to provide precision medicine in oncology, pharmacology, rare and undiagnosed diseases, and infectious diseases.

You will learn how to use individual genomics information to advise medical staff, nursing and other professionals as well as patients on diagnoses, treatment options and review of medications. The course will be delivered using UWLFlex – allowing participants to combine campus attendance face-to-face lessons and remote live lessons.

Successful completion of the MSc and the relevant Vocational Competency Evaluation may lead to HCPC registration as clinical scientist.

Modules

Core modules:

- Research and Leadership Skills
- Research Project
- Fundamentals of Genetics and Genomics
- Precision Medicine – Cancer, Rare and Common Diseases
- Bioinformatics and Functional Genomics.

Optional modules:

- Genomics Counselling Skills and Practice
- Laboratory Medicine Practice
- Molecular Pathology Practice
- Vocational Competency Evaluation.

MA Global Black Studies, Decolonisation and Social Justice



This degree will situate Black studies, culture, and identity in a global context. Here, 'global' will be interpreted as a movement both upwards and downwards. You will gaze across centuries of history and look at the mass movements that are part of large-scale social change. You will also investigate local communities and the impact that social problems related to race have had upon people's lives today.

Career options

Many local authorities are identifying such topics as being integral to their education policies going forward. As well as teachers, local authorities and police officers there are a range of public sector and private sector organisations who are keen to engage in these issues. This course will, therefore, provide an integrated Masters level degree as well as individual CPD which can be applied to various jobs in the public and private sectors.

- **Award**
Masters
- **Duration**
One year (full-time)
Two years (part-time)
- **Start date**
February and September
- **Location**
West London Campus

Course overview

The course aims to unite a global perspective with an applied content. As such modules will both investigate the underlying historical, cultural, and contemporary patterns of social change in broad terms but also seek to situate the consequences of these in specific case studies. So it is that you may enquire into the Atlantic slave trade, or the rise of indentured workers and then apply these general experiences to particular social groups, regions, and communities. Furthermore, the MA will consider contemporary debates such as BLM, issues in education, white privilege, policing, and the social justice system. Finally, you will engage with a range of the positive contributions made by the Black diaspora in literature, music, film, theatre and the arts, science, business, grassroots activism, and campaigns for social justice.

Modules

- Decolonisation: Past, Present: Future
- Black Culture: Identify, Representation and Impact
- The Global Black Diaspora: Studies in Regions and Communities
- Contemporary Issues in Black Studies
- Global Black Studies – Research Methods
- Dissertation.





MSc Health Informatics

(Extended Masters option available)

- **Award**
Masters
- **Duration**
One year (full-time)
Two years (part-time)
15 months (Extended Masters)
- **Start date**
January and September
May (Extended Masters)
- **Location**
West London Campus

Translate your interest in computing and biology into a career in health informatics.

Career options

Initiatives to digitise health and genomics information have created a strong demand for health informatics professionals. Digital data underpins the growing healthcare sector, from apps that collect wellness data to sensors monitoring diseases. Graduates from this course pursue successful careers in both the state and the private sectors, in the UK and overseas, focusing on both health services and health ICT.

Course overview

Connecting computing with biology, medicine or healthcare, our course suits graduates with analytical and inquisitive minds. Joining forces with organisations such as Amazon allow our students to handle big data and gain vital industry skills in areas such as data integration, cloud computing and cyber security.

By the end of the course you should have the professional skills you need to make effective use of data, information, knowledge and technology to support and improve health and healthcare delivery.

Modules

- Information Systems in Healthcare
- HCI for Information Systems
- Data Management in Healthcare
- Research Methods
- Dissertation in Health Informatics.

Optional modules

Choose two modules from:

- Consultancy and Technical Innovation
- Principles of Project Management
- Epidemiology and Biostatistic
- Public Health and Health Systems
- Leadership and Management for Public Health
- Digital Transformation and Innovation.

Optional modules subject to availability.

Supporting modules

- Learning and Professional Development (for International students only)
- Programming Support.

Entry requirements Please see page 133



Find out more at: uwl.ac.uk/postgraduate

MSc Health Psychology



Develop your studies with a course that meets the stage one health psychology training requirements of the Division of Health Psychology of the British Psychological Society.

Career options

Our course prepares you for a future in industry, academia, charitable organisations or the NHS. You can also continue with stage two training in health psychology. Stage one training is a first step towards Chartered Psychologist status and registration with the Health and Care Professions Council (HCPC) as a Health Psychologist. On completion, you may also wish to follow an MPhil/PhD programme.

- **Award**
Masters
- **Duration**
One year (full-time)
Two years (part-time)
- **Start date**
September
- **Location**
West London Campus

Course overview

We provide a complete grounding in the theory, themes, professional issues and practical skills central to stage one health psychology training. Our course has established links with health and behaviour change organisations in smoking cessation and/or weight management, where you can gain work experience and carry out research.

The course contains taught components and applied assessments. It also has a strong focus on research that concludes with the final dissertation project, which will provide you with the opportunity to design and undertake an autonomous piece of research on any relevant area of psychology of health and illness. You will be encouraged to present your work at health psychology conferences and publish your research.

Applicants to this course must hold, or be eligible for, the Graduate Basis for Chartered membership (GBC) of the British Psychological Society (BPS). If you are not eligible for the GBC, you may wish to apply for a place on our MSc Psychology of Health and Illness course. If you would like to obtain GBC, you may wish to apply for a place on our MSc Psychology Conversion course.

Modules

- Biopsychosocial Issues in Health Psychology
- Individual Differences in the Psychology of Health and Illness
- Chronic Disorder and Health Psychology Interventions
- Advanced Research Methods One
- Advanced Research Methods Two
- Practice and Professional Issues in Health Psychology
- MSc Health Psychology Dissertation.



Find out more at: uwl.ac.uk/postgraduate



Entry requirements Please see page 133





MA Human Resource Management

- **Award**
Masters
- **Duration**
One year (full-time Sept start)
15 months (full-time Jan start)
Two years (part-time)
- **Start date**
January and September
- **Location**
West London Campus

Advance your career in human resources (HR) with this specialist Masters degree, designed primarily to meet the career development needs of human resource managers, advisers and administrators.

Career options

If you are working in human resources, our course will help you to enhance your ability in your current job role and prepare you for promotion. Passing this course makes you eligible to apply for professional membership of the Chartered Institute of Personnel and Development (CIPD), which is essential for progression into HR management and consultancy.

Course overview

Throughout the course, you will be encouraged to take a critical perspective on current theory and practice, to analyse complex problems and devise creative solutions to them, and to develop the skills needed to conduct research into HR management issues. You will be expected to take responsibility for your own learning, to contribute to the learning of others and to be a reflective practitioner.

Our course also meets the Advanced Level knowledge requirements of the Chartered Institute of Personnel and Development (CIPD) for associate professional membership.

Modules

- Strategic People Management and Planning
- Advanced Employment Law and Relations
- People Resourcing and Talent Management
- Strategic Learning and Talent Development
- Managing People Practice Across Cultures
- Personal Effectiveness and Leadership
- Research Methods and the Use of Technology for Business Effectiveness
- Consultancy Project for People Practitioners.

You will use an Individual Learning Plan from the start of the course, intended to support progress, and submit a reflective log of learning during the consultancy project.

CIPD

Entry requirements Please see page 133



Find out more at: uwl.ac.uk/postgraduate

PgDip Human Resource Management



Further your career in human resources (HR) with this specialist Masters degree, designed primarily to meet the career development needs of human resource managers, advisers and administrators.

Career options

If you are working in human resources, our course will help you to enhance your ability in your current job role and prepare you for promotion. Passing this course makes you eligible to apply for professional membership of the Chartered Institute of Personnel and Development (CIPD), which is essential for progression into HR management and consultancy.

- **Award**
Postgraduate Diploma
- **Duration**
18 months (part-time)
- **Start date**
January and September
- **Location**
West London Campus

Course overview

This course shares a common first year (semesters one and two) with our MA Human Resource Management (MA HRM). You have until the end of semester two whether to pursue the Postgraduate Diploma or MA. The MA HRM route adds an extra semester to the course, extending it to four semesters.

Throughout the course, you will be encouraged to take a critical perspective on current theory and practice, to analyse complex problems and devise creative solutions to them, and to develop the skills needed to conduct research into HR management issues. You will be expected to take responsibility for your own learning, to contribute to the learning of others and to be a reflective practitioner.

The course meets the Advanced Level knowledge requirements of the CIPD for associate professional membership.

Modules

- Strategic People Management and Planning
- Advanced Employment Law and Relations
- People Resourcing and Talent Management
- Personal Effectiveness and Leadership
- Business Research in People Practice
- Research Methods and the Use of Technology for Business Effectiveness.

CIPD

Entry requirements Please see page 133



Find out more at: uwl.ac.uk/postgraduate



MSc Improvement Science

- **Award:** Masters
- **Duration:** Up to four years (part-time)
- **Start date:** September and January (students can start with any new module)
- **Location:** West London Campus

Learn how to ensure safe and effective patient care through the application of research-based improvement strategies.

Career options

Improvement Science is an emerging field in which many healthcare providers are starting to invest. Your skills and knowledge will be in high demand from employers addressing the quality improvement and Commissioning for Quality and Innovation (CQUIN) agendas.

Course overview

Our course will provide you with a high level of pragmatic research capability and knowledge applicable to your workplace. Designed for experienced, qualified healthcare staff, working both in the UK and internationally.

The course champions evidence-based implementation and evidence-based practice. It focuses on understanding care from the perspective of patients and carers, and engaging them in its future design and development. Bringing research more rapidly into everyday practice, different improvement methodologies and rigorous evaluation of clinical and cost-effectiveness will also be covered.

Many NHS Trusts now have improvement in their values and strategic agendas, this course will provide you with a robust understanding of how you can support your Trust and your patients to improve care.

Modules

- Leading and Sustaining Improvement
- Engaging Patients and Relationship Management
- Evidence-based Implementation of Improvement (Methods)
- The Policy Context of Improvement
- Improvement Project
- 40 credits of optional modules focusing on current issues of organisational or professional relevance.

Optional modules

- Demonstrating Improvement
- The Building Blocks of Transforming your Professional Role

Entry requirements

You must be:

- based in a healthcare setting
- recognised by the organisation you work for as competent and capable to care for patients
- have an idea for how to improve your healthcare service/setting.



MSc/PgDip/PgCert Infection Prevention and Control



The course aims to provide the range of expert knowledge and skills required to underpin the specialist practice of an infection prevention and control practitioner (IPCP). It also targets the competencies recommended by the Infection Prevention Society (IPS).

- **Award:** Masters/Postgraduate Diploma/Postgraduate Certificate
- **Duration:** Up to four years (part-time)
- **Start date:** October
- **Location:** West London Campus

Course overview

This course is aimed at healthcare professionals who are working in a role as an infection prevention and control practitioner (IPCP). These are senior specialist roles that require a high level of cross-disciplinary knowledge on all aspects of the epidemiology, management and prevention of infection, as well as sophisticated communication skills. Initiating and facilitating service improvements to assure patient safety are a key part of the role.

Modules

- Healthcare Associated Infections: Scientific Principles
- Infection Prevention and Control in Clinical Practice
- Driving Improvement in Infection Prevention and Control
- Measuring Public Health and Wellbeing
- Leading and Sustaining Improvement
- Evidence-based Implementation of Improvement Methods
- Improvement Project.

Entry requirements

- Undergraduate honours degree or equivalent in a subject related to healthcare, classification 2:2 or higher.
- **At least 50% of the applicants role must be working in an infection prevention and control healthcare environment.**





MSc Information Systems

(Extended Masters and Internship options available)

- **Award**
Masters
- **Duration**
One year (full-time)
Two years (part-time)
20 months (full-time with Internship)
15 months (Extended Masters)
Two years (Extended Masters with Internship)
- **Start date**
January and September
May (Extended Masters)
- **Location**
West London Campus

Build on your undergraduate computing course to develop new knowledge and skills. You will learn about areas critical for the successful introduction of information systems into business enterprises and organisations.

Career options

Our course prepares you for a wide range of roles in information systems management including business analyst (working on the analysis of systems and functional design) and functional architect/team leader (responsible for requirements management and client relationship management).

Internship option only applicable for September full-time intake.
Extended Masters with Internship only applicable for May intake.

Course overview

We will develop your understanding of today's information systems, which are often large, complex and distributed, serving a number of different types of stakeholders, using a variety of access devices. Our course helps you to take a systematic approach to understanding the impact of technology on organisations, to recognising diverse business and organisational needs, and to understanding the array of technology drivers – all vital to the success of any IS/IT strategy.

Internship option

The internship element is designed to give you the opportunity to gain valuable work experience and enhance your employability, as well as your personal and professional development. Your dissertation will be based on a 26-week period of engagement with an employer.

Modules

To qualify for the award of MSc Information Systems, you must study six modules consisting of 20 credits; and a 60 credits dissertation module.

- Consultancy and Technical Innovation
- Digital Transformation and Innovation
- Knowledge Management
- Big Data Analytics
- Research Methods
- Dissertation.

Optional modules

One module from:

- Principles of Project Management
- Mobile Web Component Development
- Security Operation and Assurance.

Optional modules subject to availability.

Supporting modules

- Employability Skills and Employment (for Internship students only)
- Learning and Professional Development (for International students only)
- Programming Support.

Entry requirements Please see page 133



Find out more at: uwl.ac.uk/postgraduate

MSc Information Systems (Integrated)

(Extended Masters and Internship options available)



- **Award**
Masters
- **Duration**
One year (full-time)
Two years (part-time)
16 months (full-time with Internship)
15 months (Extended Masters)
19 months (Extended Masters with Internship)
- **Start date**
September
- **Location**
West London Campus

Build on your undergraduate computing course to develop new knowledge and skills. You will learn about areas critical for the successful introduction of information systems into business enterprises and organisations.

Career options

Our in-depth course prepares you for a wide range of roles in information systems management including business analyst (working on the analysis of systems and functional design) and functional architect/team leader (responsible for requirements management and client relationship management).

Course overview

We will develop your understanding of today's information systems, which are often large, complex and distributed, serving a number of different types of stakeholders, using a variety of access devices. Our course helps you to take a systematic approach to understanding the impact of technology on organisations, to recognising diverse business and organisational needs, and to understanding the array of technology drivers – all vital to the success of any IS/IT strategy.

The key difference is that the integrated MSc is aimed at those who need a Level 6 qualification so that's why they do the final year of BSC Computer Science first before joining the Level 7 which would be the usual starting point for the MSc.

Internship option

To qualify for the award of MSc Information Systems (Integrated), you must study five Level 6 modules consisting of 20 credits each and two of 10 credits each; six Level 7 modules consisting of 20 credits; and a 60 credits dissertation module.

Year one (Level 6)

- Project
- Managing IS Projects
- Business Intelligence Technologies
- Databases and Analytics
- Enterprise Security Management.

Year two (Level 7)

- Consultancy and Technical Innovation
- Principles of Project Management
- Knowledge Management
- Digital Transformation and Innovation
- Big Data Analytics
- Research Methods
- Dissertation.

Optional modules

One module from:

- Principles of Project Management
- Mobile Web Component Development
- Security Operations and Assurance.

Optional modules subject to availability.

Supporting modules

- Learning and Professional Development (for international students only).

Entry requirements Please see page 133



Find out more at: uwl.ac.uk/postgraduate



MA Interior Environment Design

- **Award**
Masters
- **Duration**
One year (full-time)
Two years (part-time)
- **Start date**
September
- **Location**
West London Campus

This Masters will help you to develop your design capabilities to an advanced level and engage in creative and experimental design approaches. The course offers opportunities to work with the design of permanent and temporary built forms in both experiential and virtual environments.

Career options

On graduating from this course you could go on to work across a range of specialist designed environments working with architects, environment, spatial and urban designers, either within the traditional structure of a practice or as a freelance consultant.

Course overview

Are you passionate about interior design? Studying for this MA Interior Environment Design will give you the creative and professional skills you need to join the design professionals of the future.

On this dynamic course, you will analyse a diverse range of interiors to identify design opportunities and solutions that support and enrich people's lives.

You will study how interior design impacts broader spatial designs in both constructed and virtual environments, and work on consultancy projects with industry partners.

As you progress through the course, your development and understanding of interior design will be reflected in your projects, portfolio and final dissertation.

Modules

- Environment Design Theories, Ethics and Society
- Urban Agendas
- Sustainability, Materials and Process Detail
- Phenomena, Emergent Technologies and Communication (Project)
- Design Proposition Part 1
- Design Proposition Part 2
- Dissertation.

Entry requirements Please see page 133



Find out more at: uwl.ac.uk/postgraduate

LLM International Banking and Finance Law



If you are looking to work in the legal sector for multinational banking and finance corporations, this course is an ideal starting point.

Career options

Many graduates go on to successful careers with international corporations, investment banks, accounting firms, international law firms, international consultants and international fund managers. London is the centre for global banking, finance and trade, so you will be well placed to take advantage of our excellent links with major corporations.

- **Award**
Masters
- **Duration**
One year (full-time)
Two years (part-time)
- **Start date**
January and September
- **Location**
West London Campus

Course overview

Our course builds your understanding of the global economy within international corporations, investment banks, accounting firms, law firms, consultants and fund managers. You will learn about employment law and legal regulations affecting international and national business and finance from teaching staff who have significant practical experience and good connections to industry.

You will cover topics including syndicated loans, bond issuances, derivatives markets and employment law. We will also compare jurisdictions outside of English courts, in the US, Africa, Asia and the Middle East. The course also covers securities regulations, international banking law, international commercial arbitration and mediation law.

Modules

- Legal Aspects of International Finance
- Securities Regulation
- International Banking Law
- International Commercial Litigation
- International Arbitration
- Research Methodology
- Dissertation.

Entry requirements Please see page 133



Find out more at: uwl.ac.uk/postgraduate





LLM International Business and Commercial Law

- **Award**
Masters
- **Duration**
One year (full-time)
Two years (part-time)
- **Start date**
January and September
- **Location**
West London Campus

Our course will introduce you to the theory and practice of international business regulation in the context of globalisation.

Career options

Many graduates go on to successful careers with global corporations, multinational law firms and international consultants. London is the centre for global banking, finance and trade, so you will be well placed to take advantage of our excellent links with major corporations.

Course overview

Our course focuses on international business law from a global perspective, identifying key characteristics of doing business in an international environment, main sources of regulation, and key concepts of contract, commercial and corporate law.

You will also be introduced to international commercial litigation and arbitration. You will explore the concepts of corporate social responsibility, in particular, doing business in a fast-moving globalised economy. The course also gives students an appreciation of the key financial and shipping law concepts giving you a critical comparative law approach to international commercial law. This LLM is designed to meet the needs of students and lawyers who wish to study commercial law from an international perspective.

Modules

- International Commercial and Shipping Law
- Legal Aspects of International Finance
- Laws on International Business Structures
- International Commercial Litigation
- International Arbitration
- Research Methodology
- Dissertation.

Entry requirements Please see page 133



Find out more at: uwl.ac.uk/postgraduate

MSc International Business Management



This MSc in International Business Management welcomes students from different backgrounds, irrespective of the discipline of their first degree. The MSc International Business Management course is designed to develop your international business management skills and experience. It offers you the opportunity to grow your network by studying alongside students from many nationalities. The course is in-depth and industry evidence in its design and delivery ensures it transects directly with the demands and rigour required by leading global organisations.

Career options

You will acquire the skills and knowledge needed to succeed in a managerial role in an international organisation or a small-to-medium enterprise with an international outlook. Recent graduates have gained employment in management consultancies, international banks, and multinational companies.

- **Award**
Masters
- **Duration**
One year (full-time Sept start)
15 months (full-time Jan start)
15 months (Extended Masters, full-time May start)
18 months (Extended Masters, full-time Sept start)
- **Start date**
January and September
(Extended Masters – May and September)
- **Location**
West London Campus

Course overview

The course provides you with an understanding and critical awareness of the complexity and interdependence that characterises the national and international institutional, political, and economic environment within which international businesses operate.

It further provides students with an understanding of key issues in leadership under a cross-cultural environment. The content focuses on international business decisions and the underlying forces driving the process of internationalisation. The course examines the keys to a successful global strategy and the drivers of globalisation; it also assesses how to develop global marketing considering aspects of digital business, and how to manage global operations and finance, by having an entrepreneurial attitude.

The course aims are designed intending to develop graduate capabilities by offering a range of learning opportunities from essentials of business strategy to understanding the international business environment, being creative professionals with reflective and critical skills that would lead to globally literate citizens that promote responsible international business management. Additionally, it aims to develop students' ability to critically analyse and synthesise complex business issues, to provide students with knowledge and skills of global business from a theoretical and practical perspective and prepare them for graduate careers working abroad or in organisations that are engaged in business on a global scale.

Modules

- Global Marketing in Digital Era
- Competitive Strategy and Innovation
- Data Science Insights for Decision-making
- Geopolitical Economy of International Business
- Global Sustainable Operations
- Leading and Managing Across Culture
- International Business Management Project.

Entry requirements Please see page 133



Find out more at: uwl.ac.uk/postgraduate





MA International Fashion Brand Management

(six pathways)

- **Award**
Masters
- **Duration**
14 months (full-time)
- **Start date**
September
- **Location**
West London Campus

The curriculum is informed by the latest international professional practice. The course places strategic fashion brand management at its core and offers a unique combination of fashion branding with subjects that are specific to your chosen pathway.

Career options

When you graduate you may be qualified for a broad range of careers and you could work in roles for international fashion and luxury brands. You could alternatively progress to study a PhD specialising in an area of fashion branding and/or fashion buying/merchandising and supply chain management.

Course overview

Our exciting new MA International Fashion Brand Management suite offers six innovative degree pathways:

- MA International Fashion Brand Management: Circular Fashion¹
- MA International Fashion Brand Management: Fashion Buying and Merchandising²
- MA International Fashion Brand Management: Fashion Insight and Analysis³
- MA International Fashion Brand Management: Fashion PR and Communication⁴
- MA International Fashion Brand Management: Fashion Visual Merchandising⁵
- MA International Fashion Brand Management: Phygital Luxury Fashion⁶

Highlights of this business orientated course include:

- Two compulsory block-residential international field trips (8 to 10 days each): European Fashion Capitals and Global Fashion Capitals.
- 80 hours internship or participation in a cross-pathway social action industry mentorship project.
- Up-to-date industry-led curriculum.
- Learning-by-doing approach using problem-based workshops and live-consultancy projects with industry partners.
- Digital skills training for your chosen specialism.
- Access to FashionTalk programme to meet and learn from the key fashion and luxury industry professionals.
- Access to UWL's Westmont Enterprise Hub – incubation centre.
- Present your work at UWL ArtsFest.
- Two days maximum (per week) timetabling.

Modules

- Research Methods for Creative Industries
- Strategic Fashion Brand Management
- Professional Fashion Contexts
- MA Project/Dissertation

Plus, one per each pathway:

- Make Fashion Circular¹
- Fashion Buying and Merchandising²
- Fashion Consumer Insight and Market Intelligence³
- Fashion PR and Communication⁴
- Fashion Visual Merchandising and Retail Design⁵
- Transforming Luxury Fashion Brands and Consumer Experiences⁶

Numbers correspond to pathways listed in Course Overview.

Entry requirements

- An honours degree (2:2 or above) from a UK university or equivalent.

Entry requirements Please see page 133



Find out more at: uwl.ac.uk/postgraduate

LLM International Studies in Intellectual Property Law



Build specialist knowledge of intellectual property law including copyright, trade mark and patent law, and legal questions associated with new technologies.

Career options

Many graduates go on to successful careers with international law firms, multinational corporations, regulatory bodies and international organisations.

- **Award**
Masters
- **Duration**
One year (full-time)
Two years (part-time)
- **Start date**
January and September
- **Location**
West London Campus

Course overview

Specialist legal and commercial expertise in technology and intellectual property law is increasingly required by international organisations and law firms seeking to remain competitive in the digital era. Our lectures cover the law of international intellectual property and technology, including European and international aspects.

You will study the most important components of international intellectual property law, such as copyright, patents and trademarks, and how these forms of intellectual property are protected in the digital age. As well as offering specialised courses, we put intellectual property into the context of modern international business relations.

The course is for law graduates, practising lawyers and business professionals from anywhere in the world who wish to develop specialist legal and commercial expertise in intellectual property law and technology.

Modules

- Intellectual Property in the Digital Economy
- Commercial Intellectual Property Law
- International Commercial Litigation
- International Arbitration
- International Commercial and Shipping Law
- Research Methodology
- Dissertation.

Entry requirements Please see page 133



Find out more at: uwl.ac.uk/postgraduate





MA International Tourism and Aviation Management

(Internship option available)

- **Award**
Masters
- **Duration**
One year (full-time)
18 months (full-time with internship)
Two years (part-time)
15 months (Extended Masters, full-time)
21 months (Extended Masters with internship, full-time)
- **Start date**
January and September,
September and May
(Extended Masters)
- **Location**
West London Campus

Study the organisational and operational links between tourism and aviation, with a focus on developing leading practice.

Career options

Past students have secured graduate training and management consultancy positions in large international companies linked to different aspects of tourism and aviation. These include tour operations, retail travel, destination management organisations, national tourist boards, airport operators, airlines and hotels.

Course overview

Our course introduces the philosophies, principles and practices that underpin a successful management career in tourism and aviation. You have the option of undertaking an internship or producing a research-led dissertation.

The internship route includes a 30-week industry placement with a tourism, aviation or hospitality employer in the UK or overseas. This allows you to add a practical dimension to your studies, focused on the demands of workplace supervision and management.

The dissertation route requires a 15,000 word thesis to be completed which is supported by a dedicated team of research supervisors, this allows you to apply your research skills and contribute to existing debates in tourism and/or aviation management.

Modules

- Crisis Management for Tourism and Aviation
- Entrepreneurship
- Responsible Tourism and Aviation
- Destination Management and Marketing
- Aviation Management
- Strategic Management for the Tourism and Aviation Industry.

Dissertation route

- Dissertation.

Internship route

- Research Methods
- Internship – it is the student's responsibility to find their internship, with support from the Placement Team. Any student unable to secure an internship will automatically be transferred to the Dissertation route.

The internship route for this course is currently open to UK students only; please refer to www.uwl.ac.uk/course/postgraduate/international-tourism-and-aviation-management for updates.



Entry requirements Please see page 133



Find out more at: uwl.ac.uk/postgraduate

LLM Legal Practice (LPC)



Are you interested in a career as a solicitor? Our LLM in Legal Practice incorporates the Legal Practice Course (LPC) which is the first stage of a solicitor's professional training. In addition, you would take a Research Methodology module and prepare a dissertation to enhance the qualification to a Master's award.

Career options

Successful completion of the LPC can lead to employment in a wide range of legal positions, from private practice, to areas such as local government, the Crown Prosecution Service, or the Government Legal Service, charities and in-house companies.

- **Award**
LLM
- **Duration**
One year (full-time)
Two years (part-time)
- **Start date**
September
- **Location**
West London Campus

Course overview

You will start the course with a foundation week. Workshops introduce the course and the skills of interviewing and advising, legal writing and drafting, as well as professional conduct and taxation.

You will then start your stage one study which runs from September to February. From March to June you will study stage two, as well as a Research Methodology module. In addition, you would write a 15,000 word dissertation on an area related to legal practice (over the summer studies period). On successful completion of stages one and two, you will have covered all of the compulsory professional elements necessary to qualify as a solicitor. To complete the LPC, you must pass stages one and two within five years.

Applicants for the full-time course must apply through www.lawcabs.ac.uk.

Applicants for the part-time course can apply on our website uwl.ac.uk.

Modules

Stage one Compulsory modules

- Criminal and Civil Litigation
- Property Law and Practice
- Business Law and Practice
- Professional Conduct and Regulation
- Wills and Administration of Estates
- Legal Skills – Advocacy, Interviewing and Advising, Drafting, Practical Legal Research and Writing
- Solicitors' Accounts
- Taxation (taught and assessed in context).

Stage two Three optional vocational electives

- Advanced Litigation – Personal Injury
- Commercial Leases
- Employment Law and Practice
- Family Law and Practice
- Housing and Residential Landlord and Tenant Law
- Immigration Law and Practice.

Vocational electives are subject to availability and demand.

Compulsory LLM modules

- Research Methodology
- Dissertation.

Entry requirements

Applicants should have one of the following:

- A qualifying law degree, usually 2:2 or above
- A Common Professional Examination/ Graduate Diploma in Law pass, usually with an average of at least 50%.

Solicitors Regulation Authority (SRA) – Transitional Arrangements

Please note the Legal Practice course is only available to students who are eligible to qualify as a Solicitor through the Solicitors Regulation Authority (SRA) transitional arrangements, which cover candidates already on their way to becoming a solicitor before the Solicitors Qualifying Examination (SQE) was introduced in September 2021.

Find out more about your eligibility visit: www.sra.org.uk/become-solicitor/legal-practice-course-route/transitional-arrangements

Entry requirements Please see page 133



Find out more at: uwl.ac.uk/postgraduate





PgDip Legal Practice Course (LPC)

- **Award**
Postgraduate Diploma
- **Duration**
One year (full-time)
Two years (part-time)
- **Start date**
September
- **Location**
West London Campus

Are you interested in a career as a solicitor? Our Legal Practice Course (LPC) (leading to the Postgraduate Diploma in Legal Practice) is the first stage of a solicitor's professional training.

Career options

Successful completion of the LPC can lead to employment in a wide range of legal positions, from private practice to areas such as local government, the Crown Prosecution Service, or the Government Legal Service, charities and in-house companies.

Course overview

You will start the course with a foundation week. Workshops introduce the course and the skills of interviewing and advising, legal writing and drafting, as well as professional conduct and taxation.

You will then start your stage one study, which runs from September to February. From March to June you will study stage two. To complete the LPC, you must pass stages one and two within five years. On successful completion of stages one and two you will be awarded the Postgraduate Diploma in Legal Practice, having covered all the compulsory professional elements.

Applicants for the full-time course must apply through www.lawcabs.ac.uk.

Applicants for the part-time course can apply on our website uwl.ac.uk.

Modules

Stage one Compulsory modules

- Criminal and Civil Litigation
- Property Law and Practice
- Business Law and Practice
- Professional Conduct and Regulation
- Wills and Administration of Estates
- Legal Skills, Advocacy, Interviewing and Advising, Drafting, Practical Legal Research and Writing
- Solicitors' Accounts
- Taxation (taught and assessed in context).

Stage two Three optional vocational electives

- Advanced Litigation – Personal Injury
- Commercial Leases
- Employment Law and Practice
- Family Law and Practice
- Housing and Residential Landlord and Tenant Law
- Immigration Law and Practice.

Vocational electives are subject to availability and demand.

Entry requirements

Applicants should have one of the following:

- A qualifying law degree, usually 2:2 or above
- A Common Professional Examination/ Graduate Diploma in Law pass, usually with an average of at least 50%.

The PgDip Legal Practice is **not** eligible for a Postgraduate Master's Loan from Student Finance England.

Solicitors Regulation Authority (SRA) – Transitional Arrangements

Please note the Legal Practice course is only available to students who are eligible to qualify as a Solicitor through the Solicitors Regulation Authority (SRA) transitional arrangements, which cover candidates already on their way to becoming a solicitor before the Solicitors Qualifying Examination (SQE) was introduced in September 2021.

Find out more about your eligibility visit: www.sra.org.uk/become-solicitor/legal-practice-course-route/transitional-arrangements

Entry requirements Please see page 133



Find out more at: uwl.ac.uk/postgraduate

LLM Legal Practice (Top-up)



- **Award**
Masters
- **Duration**
One year (part-time)
- **Start date**
January and September
- **Location**
West London Campus

Whether you are a graduate of the Postgraduate Diploma in Legal Practice (LPC) or a practising solicitor looking to specialise further, this course will enable you to top-up your education to a Masters degree.

Career options

Offering substantive, practice-relevant study on aspects of law or legal practice, our course complements the compulsory vocational stage of learning required to embark on a career in law. Potential employers include private practice, the Crown Prosecution Service, the Government Legal Service, charities and in-house solicitors.

Course overview

Our research and methodology module is more detailed and provides more teaching hours than similar courses from other providers. It supports you as you develop the analytical and research skills necessary to research and write a detailed dissertation relevant to the practice of law, and provides a much-needed bridge between most LLM and MPhil/PhD research methods.

The module is divided into four parts:

- Undertaking Postgraduate Research
- Process and Demographics of Research
- Data Collection, Analysis and Dissemination Methods
- The Writing Up and Dissemination of Research.

Taking place over one semester, the Research Methodology module is delivered through a blend of taught and online lectures, practical case studies and seminars. Assessment is by a 2,000-word research proposal.

The dissertation is an original piece of research into legal practice of between 13,000 and 15,000 words. Although your research must be self-managed, you will be assigned a dissertation supervisor with similar research interests either from university staff or from within the legal profession.

Modules

- Research Methodology
- Dissertation.

Solicitors Regulation Authority (SRA) – Transitional Arrangements

Please note the Legal Practice course is only available to students who are eligible to qualify as a Solicitor through the Solicitors Regulation Authority (SRA) transitional arrangements, which cover candidates already on their way to becoming a solicitor before the Solicitors Qualifying Examination (SQE) was introduced in September 2021.

Find out more about your eligibility visit: www.sra.org.uk/become-solicitor/legal-practice-course-route/transitional-arrangements

Entry requirements Please see page 133



Find out more at: uwl.ac.uk/postgraduate





MA Luxury Hospitality Management

(Internship option available)

- **Award Masters**
- **Duration**
One year (full-time)
18 months (full-time with internship)
Two years (part-time)
15 months (Extended Masters, full-time)
21 months (Extended Masters with internship, full-time)
- **Start date**
January and September, May (Extended Masters)
- **Location**
West London Campus

Success in the growing luxury market requires specialised knowledge and insights. Develop your marketing and hospitality management expertise in a new direction. This course is accredited by the Institute of Hospitality.

Career options

This course will equip you for the special challenges of the growing luxury hospitality market. Career opportunities exist in organisations at unit, regional and international levels, as well as in organisations serving various industries. You will also acquire skills relevant to luxury brand management.

Course overview

Designing and managing the luxury hospitality experience requires a whole new mindset, where empathy, intuition and the art of anticipation are dominant. Our course enables you to approach business challenges from a global perspective, integrating academic and technical knowledge, and assessing situations from financial, commercial and cultural standpoints. You will learn how to champion and protect brand reputation and manage change in the workplace.

Strong links to leading luxury hospitality brands and enterprises root this course in real business challenges, while working in teams helps you build the practical communication and organisational skills that secure team buy-in and successful project management.

We have two routes, both offering a challenging programme of professional practice. The internship route incorporates a 30-week paid placement coordinated by the University's own dedicated internship team. This draws upon the College's contacts with luxury hotels and fine-dining restaurants. We also offer a dissertation route.

Entry requirements Please see page 133

Modules

- Luxury Hospitality Business Environment
- Designing the Customer Experience
- Business Performance Analysis
- Brand Reputation Management
- Researching Luxury Organisations
- Strategic Practice in Luxury Hospitality Management.

Dissertation route

- Dissertation.

Internship route

- Internship – it is the student's responsibility to find their internship, with support from the Placement Team. Any student unable to secure an internship will automatically be transferred to the Dissertation route.



The internship route for this course is currently open to UK students only; please refer to www.uwl.ac.uk/course/postgraduate/luxury-hospitality-management for updates.



Find out more at: uwl.ac.uk/postgraduate

MBA Masters in Business Administration

Also available: • Senior Leader Apprenticeship



Enhance your prospects with a Master in Business Administration (MBA) that is internationally recognised as a mark of high-calibre management knowledge and skills. Subject to eligibility, candidates who are sponsored by their employer may be able to use their employer's apprenticeship levy to cover the costs of the course.

Career options

The MBA can accelerate your career progression, help you perfect your management skills, give you access to a network of industry professionals, and open up new career opportunities for you. Our MBA course is accredited by the Chartered Management Institute (CMI).

- **Award Masters**
- **Duration**
One year (MBA full-time September start)
15 months (MBA full-time January start)
- **Start date**
January and September (MBA)
January, April and September (Senior Leader Apprenticeship)
- **Location**
West London Campus

Course overview

The MBA has been designed to support your career progression, preparing you for senior management and strategic roles. The course welcomes experienced professionals from different industries and sectors seeking career advancement; take on senior management roles; transfer to another sector/industry; or to set up their own enterprises.

Using a range of teaching methods, the course will help you develop a critical understanding of strategic issues relevant to senior managers within organisations.

The MBA is designed to develop your strategic decision-making and leadership ability; as well as to strengthen your skills in communication, analysis, problem-solving and critical thinking.

The course also provides an opportunity to conduct independent and in-depth research into an industry or sector.

Modules

- Management Skills for Executives
- Leading People and Teams
- Strategy and Innovation
- Financial Management for Decision Makers
- Global Marketing and Digital Business
- Critical Inquiry into Sector Analysis.

Full-time MBA

- MBA Project.

Senior Leader Apprenticeship

- MBA Project with End Point Assessment.



Find out more at: uwl.ac.uk/postgraduate



Entry requirements Please see page 133





MSc Mathematics and Statistics

- **Award**
Masters
- **Duration**
One year (full-time)
- **Start date**
September
- **Location**
West London Campus

Spanning subjects across pure, applied mathematics and statistics, this MSc course provides a unique opportunity for you to develop specialist skills to launch a career in a rapidly evolving job market with high demand of data and numeracy experts, allowing you also to further your postgraduate credentials in an advanced scientific and numerical subject.

During your one-year studies, you will gain strong skills in topics such as Machine Learning, Mathematical and Stochastic Modelling, and Symmetry Techniques. Taught by expert academics in their respective fields, you will develop exceptional analytical and computational skills. In your final semester, you will also be able to undertake a research project under the supervision of our research specialists.

Career options

If you are looking for a career in education, data science, finance, or insurance, then our Mathematics and Statistics degree is right for you.

Course overview

The job market for mathematicians and statisticians has changed over the last decade, with the emergence of data science. Adding to traditional areas, such as education, banking and insurance, the demand for individuals with strong mathematical, statistical and data presenting skills has never been higher.

Our MSc in Mathematics and Statistics stands out by covering topics from both pure and applied mathematics, as well as statistics and data science. With a strong focus on computational skills, problem solving and scientific presentation, successful completion of this degree offers the perfect starting point for a career in an increasingly data driven society. If your interest is in academia, this degree will also be a perfect starting for our PhD course in Mathematics.

With our degree based at the School of Computing and Engineering, you will gain a strong sense of interdisciplinarity from working with computer scientists, engineers as well as pure and applied mathematicians. This reflects the way that most technical teams are nowadays structured in industry, government, and academia.

In your final semester, you will be able to specialise further in a research topic of your own choice. Under the supervision of our expert academics, you will undertake a research project, gaining valuable skills in independent research and scientific communication.

Modules

- Machine Learning
- Mathematics of Signal Processing
- Topics in Probability and Stochastic Processes
- Statistical Data Analytics
- Mathematical Methods and Modelling
- Lie groups, Lie Algebras and Symmetry Techniques
- Dissertation

Entry requirements Please see page 133



Find out more at: uwl.ac.uk/postgraduate

MSc/MSci Molecular Pathology*

*Subject to validation



This course is a clinical science course focused on training students to develop comprehensive knowledge and competent skills and behaviours for finding the best treatment for patients. The course is suitable for students who want to develop knowledge, skills and behaviours for diagnosis of disease through the examination of molecules within organs, tissues or bodily fluids.

Career options

The course is particularly suitable for students interested in pursuing a career as Biomedical or Clinical Scientists. It is designed to meet the Health and Care Professions Council requirements, as well as the UK Clinical Science Apprenticeship and Occupational standards for registration to practice as a clinical scientist.

- **Award**
Masters
- **Duration**
One year (full-time)
Two years (full-time with placement)
- **Start date**
September
- **Location**
West London Campus

Course overview

Studying MSc/MSci Molecular Pathology will help you to develop lab-facing specialty knowledge and skills on how DNA and products of DNA relate to health and how this can result in the better diagnosis of disease and targeted therapies.

You will also develop competencies to find the cause of rare genetic conditions, why cancers develop and what is the best way to treat them. You will also develop speciality knowledge and skills for identifying abnormal genes and predict the likelihood of them being passed onto the next generation.

You will use chemical examination of cellular DNA to define any genetic abnormalities in specific areas including prenatal diagnosis – examining cells for possible abnormalities in the foetus, carrier testing and risk assessment – for identifying pre-symptomatic individuals at risk from single gene disorders and confirmation of diagnosis.

Modules

Core modules:

- Research and Leadership Skills in Laboratory Medicine
- Research Project
- Molecular Pathology Practice.

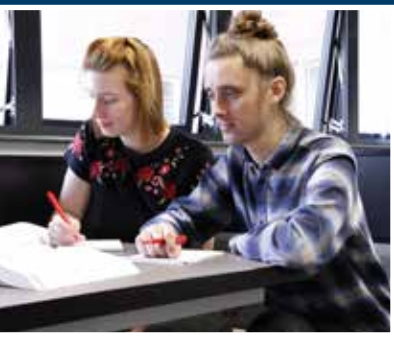
Optional modules:

- Introduction to Genetics and Genomics
- Bioinformatics and Functional Genomics
- Genomics Counselling Practice
- Laboratory Medicine Practice
- Health and Well-being
- Data Science for Bioinformatics
- Vocational Competency Evaluation
- Programming Support
- Data Science for Bioinformatics
- Data Management in Healthcare.

Entry requirements Please see page 133

Find out more at: uwl.ac.uk/postgraduate





MA Music and Performing Arts Education*

*Subject to validation

- **Award**
Masters
- **Duration**
One year (full-time)
Two years (part-time)
- **Start date**
September
- **Location**
West London Campus

Building on your established artistic and performance practice, this course aims to develop your performance teaching, leadership, and research skills across a variety of global music and performing arts educational contexts.

Career options

As a graduate of this course, you will be prepared for leadership careers in areas including youth or community music/theatre groups and schools, and instrumental/vocal/acting/movement performance teaching and institution-based arts education and outreach ventures. You may choose to develop your research and practice skills further by studying for a PhD.

Course overview

You will have the opportunity to work in close collaboration with our educational outreach community ventures and London College of Music Examinations, one of the major global grade and diploma examination boards in music and performing arts-based subjects.

This course will allow you to develop advanced skills in the practical and creative application of knowledge and reflexive thinking between theory and practice related to music and performing arts education, and an exploration, assessment, and synthesis of techniques at the forefront of research and development in this sector.

The degree will help you develop vital skills to hone your professional education-based career, complementing your existing performance abilities.

Modules

- Pedagogic Theories and Practices
- Devising Material
- 1:1 and Small Group Teaching
- Creative Workshopping for Education and Community Settings
- The Business of Education
- PG Research Methods
- Masters Project.

Entry requirements

A minimum of a 2:1 degree in or related to Performing Arts, Performance or Theatre.

Entry requirements Please see page 133



Find out more at: uwl.ac.uk/postgraduate

MA Music Industry Management and Artist Development



Enhance your commercial prospects by learning how to manage and develop careers in the music industry – whether it is your own or those of acts you represent.

Career options

Building on your own entrepreneurial talents, our course equips you with a set of skills that could lead to roles such as: manager/agent, teacher, record label executive, work in PR, self-managed artist or producer, live events manager marketing and music publishing, promoter, tour manager or radio station manager, or further study on an MPhil/PhD programme.

- **Award**
Masters
- **Duration**
One year (full-time)
Two years (part-time)
- **Start date**
January and September
- **Location**
West London Campus

Course overview

Working under the direction of a team of highly experienced industry professionals, you will cover key aspects of managing and developing music careers. The modules have been specifically designed to allow you to develop your entrepreneurial and transferable skills. They include setting up your own independent music business, creating live events, developing digital marketing campaigns and artist releases, managing copyright, and designing your own research project into an area of interest.

With access to the unique insights and unprecedented experience of industry experts, you will acquire skills that help you develop a new business or secure employment within specialist sectors of the music industry.

Modules

- Independent Music Management
- Digital Marketing and Artist Branding
- Professional Career Development
- Leadership in Event Management
- Intellectual Property Law and Practice
- Research Methods
- Dissertation Project.

Entry requirements

In addition to your completed application form, you will need to send a written statement. 2:1 degree classification is required.

Entry requirements Please see page 133



Find out more at: uwl.ac.uk/postgraduate





Professional Doctorates

- DNurs Doctor of Nursing
- DMid Doctor of Midwifery
- DHSD Doctor of Health Service Delivery

- **Award**
Doctor of Nursing
Doctor of Midwifery
Doctor of Health Service Delivery
- **Duration**
Five to seven years (part-time)
- **Start date**
September
- **Location**
West London Campus

Take a new perspective on how learning relates to professional practice with this doctorate degree. As a professional and a researcher, you will develop the skills needed to answer pressing questions that are directly applicable to your workplace.

Career progression

The professional doctorate is designed to provide you with an advanced level of research capability and knowledge that is directly tied to the professional setting and applicable in the workplace.

Course overview

These courses are designed to support you at an advanced level of your profession, your practice and new, original ways in which you can contribute to the professional knowledge base in your area. The learning is designed to be directly applicable to your workplace. The uniqueness of these courses is in the systematic approach it takes to enabling you as a student to answer the questions you need answered for your professional practice, then supporting you to develop your research and writing skills, to enable you to produce an original contribution of knowledge to your professional area.

Modules and teaching

In the first two years you will be asked to undertake taught modules, these are work-based learning modules and will be relevant to your practice. You will be asked to attend workshops and to hand in assignments for each module.

Additional entry requirements

You are normally required to have at least two years relevant professional experience in the appropriate discipline; endorsed by membership of a professional body or institute (where appropriate and relevant) and to be currently employed in professional practice. Your area of research and practice development must align with an area within the University's current research activities so that supervisors, who are familiar with the relevant area of research and practice, can be assigned. You are normally required to have a first degree (2:1) and a Masters degree (merit or equivalent). It is possible to enter the course via non-traditional routes if you can demonstrate Masters equivalent experience and learning in your professional work.

Entry requirements Please see page 133



Find out more at: uwl.ac.uk/postgraduate

PgDip Nursing (Adult) (Pre-registration)



Are you ready to make a difference and embark on a rewarding career in nursing? This course has been designed for graduates (in any subject) who would like to become an Adult Nurse. It will prepare you to care for adults of all ages (aged 18+), who are recovering from an accident or acute illness, learning to live with a chronic health condition or at the end of their lives.

Career options

On completion of this course, you will be eligible to register with the Nursing and Midwifery Council (NMC) as an Adult Nurse.

- **Award**
Postgraduate Diploma
- **Duration**
Two years (full-time) following Recognition of Prior Learning
- **Start date**
September
- **Location**
West London Campus/
Berkshire Institute for Health (Reading)

Course overview

This exciting course is approved against the Nursing and Midwifery Council Future Nurse: Standards of Proficiency for Registered Nurses (May 2018). These standards set out the knowledge and skills you as the next generation of Adult Nurses will learn, to enable you to deliver world class person-centred, evidence-based care. You will spend time learning in both theory and practice (includes in-hospital and out of hospital). Our simulation centres will help you practice your clinical skills in a safe environment. You will reflect the values expected in contemporary nursing practise (The Code, NMC 2015) and the NHS Constitution.

Modules

Year one

- Sciences Underpinning Evidence-based Nursing Practice
- Promoting Health and Preventing Ill Health
- Leading and Managing the Delivery of Person-centred Care
- Part 1 Nursing Practice
- Part 2 Nursing Practice.

Year two

- Sciences Applied to and Decision Making in Nursing Practice
- Leading, Innovating and Improving Nursing Practice
- Preparing for Registration with the NMC
- Part 3 Nursing Practice.

Additional entry requirements

- You must have an undergraduate degree 2:2 or above (in any subject)
- GCSE in English Language and mathematics grade 9-4/A*-C or Level 2 Functional Skills equivalents
- Applicants must be classified as a Home/EU student prior to starting the course and show evidence of study in the past five years
- One satisfactory reference
- All offers are subject to satisfactory enhanced Disclosure and Barring Service (DBS) and occupational health clearance
- Experience of working in a health/ social care setting (paid/voluntary) is recommended
- Shortlisted candidates will attend an individual values based interview. Candidates successful at interview will be required to complete a 6,000 word portfolio (RPL module) – pass mark of 40% at academic level 6 to be offered a place on this course. Guidance will be provided.

For more information visit: nhscareers.nhs.uk

Entry requirements Please see page 133



Find out more at: uwl.ac.uk/postgraduate





MSc Nursing (Adult) Blended Learning – Pre-registration*

- **Award**
Masters
- **Duration**
Two years (full-time blended learning)
- **Start date**
February and September
- **Location**
West London Campus/
Berkshire Institute for Health
(Reading)

This new blended learning course has been designed for self-motivated applicants with an undergraduate degree and healthcare experience, who are looking for a two-year flexible route of study. Studying this course results in eligibility to register as an Adult Nurse with the Nursing and Midwifery Council (NMC). It will prepare you to care for adults of all ages (aged 18+), who are recovering from an accident or acute illness, learning to live with a chronic health condition or at the end of their lives.

Course overview

The innovative approach to delivery means that the majority of the theory element of the course will be delivered online, using a variety of virtual and blended learning strategies.

Practice placements will take place in the clinical environment with our local NHS and Private, Voluntary and Independent partners supported by practice-orientated simulation activities.

This flexible delivery model enables you to more easily balance your studies with other personal commitments.

The course has been designed to meet the Nursing and Midwifery Council Future Nurse: Standards of Proficiency for Registered Nurses (May 2018).

* This course is subject to approval by UWL and the Nursing and Midwifery Council, as such it may be subject to change.

Entry requirements Please see page 133



Modules and teaching

Year one

- Personal Effectiveness and Wellbeing for Professional Nursing Practice
- Health Promotion and the Prevention of Ill Health
- Evidence Based Nursing Care the Art and Science
- The Leadership and Management of Person-centred Care
- Year 1 Nursing Practice.

Year two

- Transitioning to the Role of Registered Nurse
- Ethical Decision Making in Nursing Practice
- Improving the Safety and Quality of Care through Nursing Research
- Year 2 Nursing Practice.

Additional entry requirements

Academic requirements

- All applicants will hold:
- Undergraduate degree – usually 2:1 or above (in any subject**)
 - Mathematics and English Language GCSE Grade 9-4 OR equivalent i.e., Functional Skills Level 2

** Where the undergraduate degree is not in a healthcare related subject we would require significant healthcare experience (this is in addition to the recognition of prior learning practice hours detailed below).

Other Requirements

- Recognition of Prior Learning – 1,000 hours: 500 hours theory and 500 hours practice (approx. four months formal healthcare experience signed off by a registrant). A RPL mapping tool has been devised to assist you with this
- Good basic IT skills
- IT access to facilitate remote working
- Completion of a two-week online non-credited programme
- Some experience of studying in the past five years
- A satisfactory reference
- Satisfactory enhanced Disclosure and Barring Service (DBS) and occupational health checks.

For more information visit:
nhscareers.nhs.uk



Find out more at: uwl.ac.uk/postgraduate

PgDip Nursing (Learning Disabilities) (Pre-registration)

Are you ready to make a difference and embark on a rewarding career in nursing? This course has been designed for graduates (in any subject) who would like to become a Learning Disabilities Nurse. It will prepare you to positively contribute to the health and wellbeing of people with learning disabilities. You will learn how to assess the often complex social and health care needs and support the delivery of robust, evidence-based care plans.

Career options

On completion of this course, you will be eligible to register with the Nursing and Midwifery Council (NMC) as a Learning Disabilities Nurse.

Course overview

This exciting course is approved against the Nursing and Midwifery Council Future Nurse: Standards of Proficiency for Registered Nurses (May 2018) and has been designed for candidates who hold an undergraduate degree (in any subject). These standards set out the knowledge and skills you as the next generation of nurses will learn, to enable you to deliver world class person-centred, evidence-based care to people with learning disabilities. You will spend time learning in both theory and practice (includes in-hospital and out of hospital). Our simulation centres will help you practice your clinical skills in a safe environment. You will reflect the values expected in contemporary nursing practise (The Code, NMC 2015) and the NHS Constitution.

Modules

Year one

- Sciences Underpinning Evidence-based Nursing Practice
- Promoting Health and Preventing Ill Health
- Leading and Managing the Delivery of Person-centred Care
- Part 1 Nursing Practice
- Part 2 Nursing Practice.

Year two

- Sciences Applied to and Decision Making in Nursing Practice
- Leading, Innovation and Improving Nursing Practice
- Preparing for Registration with the NMC
- Part 3 Nursing Practice.



- **Award**
Postgraduate Diploma
- **Duration**
Two years (full-time) following Recognition of Prior Learning
- **Start date**
September
- **Location**
West London Campus/
Berkshire Institute for Health
(Reading)

Additional entry requirements

- You must have an undergraduate degree 2:2 or above (in any subject)
- GCSE in English Language and mathematics grade 9-4/A*-C or Level 2 Functional Skills equivalents
- Applicants must be classified as a Home/EU student prior to starting the course and show evidence of study in the past five years
- One satisfactory reference
- All offers are subject to satisfactory enhanced Disclosure and Barring Service (DBS) and occupational health clearance
- Experience of working in a health/ social care setting (paid/voluntary) is recommended
- Shortlisted candidates will attend an individual values based interview. Candidates successful at interview will be required to complete a 6,000 word portfolio (RPL module) – pass mark of 40% at academic level 6 to be offered a place on this course. Guidance will be provided.

For more information visit:
nhscareers.nhs.uk

Entry requirements Please see page 133



Find out more at: uwl.ac.uk/postgraduate





MSc Nursing (Learning Disabilities) Blended Learning – Pre-registration*

- **Award**
Masters
- **Duration**
Two years (full-time blended learning)
- **Start date**
February and September
- **Location**
West London Campus/
Berkshire Institute for Health
(Reading)

This new blended learning course has been designed for self-motivated applicants with an undergraduate degree and healthcare experience who are looking for a two-year flexible route of study. Studying this course will result in eligibility to register as a Learning Disabilities Nurse with the Nursing and Midwifery Council (NMC). It will prepare you to positively contribute to the health and wellbeing of people with learning disabilities. You will learn how to assess the often complex social and health care needs and support the delivery of robust, evidence-based care plans.

Course overview

The innovative approach to delivery means that the majority of the theory element of the course will be delivered online, using a variety of virtual and blended learning strategies.

Practice placements will take place in the clinical environment with NHS and Private, Voluntary and Independent partners supported by practice-orientated simulation activities.

This flexible delivery model enables you to more easily balance your studies with other personal commitments.

The course has been designed to meet the Nursing and Midwifery Council Future Nurse: Standards of Proficiency for Registered Nurses (May 2018).

* This course is subject to approval by UWL and the Nursing and Midwifery Council, as such it may be subject to change.

Modules and teaching

Year one

- Personal Effectiveness and Wellbeing for Professional Nursing Practice
- Health Promotion and the Prevention of Ill Health
- Evidence Based Nursing Care the Art and Science
- The Leadership and Management of Person-centred Care
- Year 1 Nursing Practice.

Year two

- Transitioning to the Role of Registered Nurse
- Ethical Decision Making in Nursing Practice
- Improving the Safety and Quality of Care through Nursing Research
- Year 2 Nursing Practice.

Additional entry requirements

Academic requirements

- All applicants will hold:
- Undergraduate degree – usually 2:1 or above (in any subject**)
 - Mathematics and English Language GCSE Grade 9-4 OR equivalent i.e., Functional Skills Level 2

** Where the undergraduate degree is not in a healthcare related subject we would require significant healthcare experience (this is in addition to the recognition of prior learning practice hours detailed below).

Other Requirements

- Recognition of Prior Learning – 1,000 hours: 500 hours theory and 500 hours practice (approx. four months formal healthcare experience signed off by a registrant). A RPL mapping tool has been devised to assist you with this
- Good basic IT skills
- IT access to facilitate remote working
- Completion of a two-week online non-credited programme
- Some experience of studying in the past five years
- A satisfactory reference
- Satisfactory enhanced Disclosure and Barring Service (DBS) and occupational health checks.

For more information visit:
nhscareers.nhs.uk

Entry requirements Please see page 133



Find out more at: uwl.ac.uk/postgraduate

PgDip Nursing (Mental Health) (Pre-registration)



Are you ready to make a difference and embark on a rewarding career in nursing? This course has been designed for graduates (in any subject) who would like to become a Mental Health Nurse. This course will prepare you to support people with a wide range of mental health conditions. You will learn how to assess, plan, promote and support a person's recovery, facilitating their involvement and enhancing their level of control.

Career options

On completion of the course you will be eligible to register with the Nursing and Midwifery Council (NMC) as a Mental Health Nurse.

- **Award**
Postgraduate Diploma
- **Duration**
Two years (full-time) following Recognition of Prior Learning
- **Start date**
September
- **Location**
West London Campus/
Berkshire Institute for Health
(Reading)

Course overview

This exciting course is approved against the Nursing and Midwifery Council Future Nurse: Standards of Proficiency for Registered Nurses (May 2018). These standards set out the knowledge and skills you as the next generation of nurses will learn, to enable you to deliver world class personcentred, evidence-based care to people with a mental health need. You will spend time learning in both theory and practice (includes in-hospital and out of hospital). Our simulation centres will help you practice your clinical skills in a safe environment. You will reflect the values expected in contemporary nursing practise (The Code, NMC 2015) and the NHS Constitution.

Modules

Year one

- Sciences Underpinning Evidence-based Nursing Practice
- Promoting Health and Preventing Ill Health
- Leading and Managing the Delivery of Person-centred Care
- Part 1 Nursing Practice
- Part 2 Nursing Practice.

Year two

- Sciences Applied to and Decision Making in Nursing Practice
- Leading, Innovating, and Improving Nursing
- Preparing for Registration with the NMC
- Part 3 Nursing Practice.

Additional entry requirements

- You must have an undergraduate degree 2:2 or above (in any subject)
- GCSE in English Language and mathematics grade 9-4/A*-C or Level 2 Functional Skills equivalents
- Applicants must be classified as a Home/EU student prior to starting the course and show evidence of study in the past five years
- One satisfactory reference
- All offers are subject to satisfactory enhanced Disclosure and Barring Service (DBS) and occupational health clearance
- Experience of working in a health/ social care setting (paid/voluntary) is recommended
- Shortlisted candidates will attend an individual values based interview. Candidates successful at interview will be required to complete a 6,000 word portfolio (RPL module) – pass mark of 40% at academic level 6 to be offered a place on this course. Guidance will be provided.

For more information visit:
nhscareers.nhs.uk

Entry requirements Please see page 133



Find out more at: uwl.ac.uk/postgraduate





MSc/PgDip Nursing (Top-up)

- **Award**
Masters/Postgraduate Diploma
- **Duration**
One to two years (part-time)
- **Start date**
September and January
- **Location**
West London Campus/
Berkshire Institute for Health
(Reading)

If you are a qualified nurse who has completed a pre-registration PgDip in Nursing at the University of West London, this course will allow you to top-up your award to a Masters degree.

Career options

This course will develop your ability to critically analyse and synthesise clinical evidence, work and think independently, via the process of undertaking a rapid review. These are qualities that are highly sought-after in the workplace and valued by employers.

Course overview

This course has been designed solely for registered nurses who have completed their pre-registration PgDip Nursing (Adult/Mental Health/Learning Disabilities) course at the University of West London and wish to complete a Masters award.

It is a part-time course allowing you to study while you work. The modules have been designed to have a positive and evidence-based impact on your clinical practice. Following the first module where you explore the principles and process of undertaking a systematic review you will progress onto undertaking an actual rapid review on a topic that relates to your area of clinical practice.

Modules

- Systematic Reviews: Principles and Methods – you must pass this prior to commencing the module below
- Project – Rapid Systematic Review of Evidence to Inform Professional Practice.

Additional entry requirements

You should:

- have a PgDip Nursing (pre-registration) from the University of West London
- be NMC registered
- currently employed in a registered nurse post in the UK.

Entry requirements Please see page 133



Find out more at: uwl.ac.uk/postgraduate

MSc Paramedic Science (Pre-registration)



Are you ready for a new challenge and thinking of becoming a paramedic? If you have an undergraduate degree in a healthcare profession* this exciting course will give you the relevant knowledge, skills and clinical expertise to deliver safe and effective treatment to patients in the pre-hospital/out-of-hospital environment.

On successful completion, you will be eligible to apply for registration as a Paramedic with the Health and Care Professions Council (HCPC).

* Applications are also welcomed from candidates with a bioscience degree and healthcare experience.

- **Award**
Masters
- **Duration**
Two years (full-time)
- **Start date**
January
- **Location**
West London Campus

Course overview

We partner with the London Ambulance Service NHS Trust, the busiest emergency ambulance service in the UK, to deliver this trailblazing course. It was the first pre-registration Paramedic Science course at Masters level in the UK.

You will be at the front line of urgent, emergency and critical care and will gain the knowledge you need to become a confident and self-sufficient practitioner.

You will be able to provide effective care to critically ill and injured patients, but also gain the knowledge and skills to community refer or discharge a broad range of lower acuity presentations.

Placements will be with both the London Ambulance Service NHS Trust and in several wider health and social care settings.

Approved by The Health and Care Professions Council (HCPC).

Modules

Year one

- Applied Paramedic Science 1
- Evaluating Evidence for Translation in Paramedic Practice
- Population Health and Behavioural Science for Paramedic Practice
- Paramedic Practice Year 1.

Year two

- Applied Paramedic Science 2
- Managing Safety and Complexity in Paramedic Care Delivery
- Improving Paramedic Practice and Service Delivery (Dissertation)
- Paramedic Practice Year 2.

Additional entry requirements

- You must have an undergraduate degree 2:2 or above in a healthcare profession, for example in: nursing, midwifery or an allied health profession. If you hold a biological sciences undergraduate degree, you will be considered. You must be able to demonstrate evidence of experience (equivalent of six months) in direct patient contact in a work/voluntary capacity, prior to application.

- GCSE in English Language and mathematics grade 9-4/A*-C or Level 2 Functional Skills equivalents
- Applicants must be classified as a Home/EU student prior to starting the course and show evidence of study in the past five years
- One satisfactory reference
- Hold a full manual UK driving license (ideally with provisional C1 entitlement on application), with no history of a serious driving offence or more than three points
- All offers are subject to satisfactory enhanced Disclosure and Barring Service (DBS) and occupational health clearance
- Shortlisted candidates will attend an individual values-based interview.

For more information visit: nhs Careers.nhs.uk

Find out more at: uwl.ac.uk/postgraduate



Entry requirements Please see page 133



MMus Performance (Classical, Jazz, Popular)

- **Award**
Masters
- **Duration**
One year (full-time)
Two years (part-time)
- **Start date**
September
- **Location**
West London Campus
Online (Distance Learning)

We welcome students from all genres of music to study on the MMus. You will learn from a team of active professional musicians and be part of the vibrant and diverse London College of Music community. You will enhance your performance skills while acquiring new practical and academic knowledge.

Career options

Your study will broaden your skill set and depth of specialist knowledge to give you a head start in the competitive employment market or prepare you to undertake further academic study, including MPhil/PhD.

Course overview

The MMus Performance course focuses on developing your musical performance in classical, jazz and/or popular styles at an advanced level. As a performer, you will benefit from one-to-one tuition with our team of internationally acclaimed professional performers, playing and learning with other students in workshops and masterclasses, and taking part in London College of Music's lively musical environment.

Developing your individual approach to performance, you will hone your critical thinking and listening skills through practical workshops and classes exploring research skills, performance practices and the psychology of performance. Our range of optional modules allow you to focus on areas of interest relevant to your career choices.

Throughout the course there are opportunities to work with students from the wider London College of Music community, enhancing your learning experience and widening your network of like-minded industry professionals.

Modules

- Research Informed Practice
- Ensemble and Musical Direction Skills
- Critical Perspectives
- Research Methods
- Performance Portfolio
- Masters Project.

Optional modules

- One module from:**
- Music Pedagogy
 - Studio Recording
 - Songwriting.

Entry requirements

In addition to your completed application form, you will need to send:

- an unedited video recording of your performances of two contrasting pieces of music
- two references (one academic)
- an answer to a set essay question that we will provide upon application.

MSc Person-centred Health and Social Care



Are you a graduate or practitioner in the field of health and social care? This course is suitable for those working in a wide range of professional areas and disciplines, and has been designed to help you respond to the growing need to integrate health and social aspects of care. As current management approaches give way to a more person-centred approach to care, our course will equip you with the up-to-date knowledge and skills you need to contribute to improving provision in this changing environment. The innovative part-time postgraduate course is delivered through a series of weekend workshops alongside blended learning.

Career options

After successfully completing this course you could progress in one of the following sectors – allied healthcare, nursing, health management, social work, public health; or you could work as a researcher, become an advisor to academic, health or policy-making organisations or continue to a PhD.

- **Award**
Masters
- **Duration**
Two years (part-time)
- **Start date**
January and September
- **Location**
West London Campus

Course overview

The last decade has brought with it an increasing recognition that chronically ill patients need more comprehensive forms of assistance, mandating a need to move away from current approaches to the management of these conditions and towards newer models of care that are personalised, integrated and contextualised.

These newer, person-centred approaches to care offer affordable biomedical and technological advances to continue to be delivered to patients on the basis of objective clinical assessment, but within a humanistic framework which strives to understand their subjective experience of illness.

You have the opportunity to be trained to research problems from your own practice and enabled to find innovative solutions; to critically engage with, evaluate and synthesise the evidence and research to promote the development and enhancement of person-centred culture and practice.

This course is currently the only one of its type in England and Wales and offers multiple study options. If you do not wish to complete the full Masters qualification, you can opt for:

- a Postgraduate Diploma
- a Postgraduate Certificate
- Individual module pathways.

Modules

- Theory and Practice of Person-centred Health and Social Care
- Health and Well-being
- Implementation and Change: Leadership and Shared Decision-making
- Research Methods
- Person-centred Mental Health Care
- Dissertation





MSc Policing

Also available:

- MSc Policing (International Policing)
- MSc Policing (Investigating Serious Crime)
- MSc Police (Leadership and Management)
- MSc Police Leadership and Management – Senior Leaders Apprenticeship

- **Award**
Masters
- **Duration**
One year (full-time)
Two years (part-time)
- **Start date**
January and September
- **Location**
West London Campus

Policing is undergoing major change with new approaches, new technologies and new challenges. This programme will enable you to develop the skills and capabilities to take opportunities and respond to these challenges, building your academic skills and developing your evidence-based practice to be more effective in your role.

Career options

Graduates of this programme will be well placed to take on specialist or leadership roles in policing, community safety, criminal justice or researching into police and society. It will be particularly relevant for anyone considering a role within police education.

Course overview

The course provides you with a transformative learning experience which responds to the changing needs of modern policing.

Focusing on working within diverse and complex communities; the course is grounded in the latest evidence-based practice and emerging technologies to build on underpinning themes including community working, valuing diversity, inclusion and equality, safeguarding, and ethical policing practice.

All pathways will challenge you to stretch your strategic and critical thinking, and to gain the knowledge, skills and competencies to create innovative and sophisticated responses to threats such as cybercrime, violence against women and girls, terrorism, organised crime, or other emerging needs within public protection.

This MSc is intended for:

- Police Officers considering progressing their career into specialisms or for promotion, and others with an interest in studying policing as an academic or researcher.
- Individuals from community safety and policing fields who wish to develop into specialist roles.
- Those who have completed undergraduate degrees and who now want to specialise in policing.

Modules

- Evidence-based Approaches
- Contemporary Policing: Legitimacy and Performance
- Research Methods
- Dissertation.

Optional modules

MSc Policing

- Criminal Investigations
- Police Leadership and Management
- Criminal and Forensic Psychology.

MSc Policing (International Policing)

- International Policing.

MSc Policing (Investigating Serious Crime)

- Criminal Investigations.

MSc Policing (Leadership and Management)

- Police Leadership and Management.

MSc Police Leadership and Management – Senior Leaders Apprenticeship

Graduates will also become accredited managers by the Chartered Management Institute (CMI)

- Police Leadership and Management
- End Point Assessment.

MSc Psychology Conversion



Acquire all the skills and knowledge you need for the Graduate Basis for Chartered Membership of the British Psychological Society (BPS).

Career options

Success on this course will give you the Graduate Basis for Chartered Membership of the BPS, which opens doors to further specialised training in applied and research psychology. Our graduates typically progress to such training, with many completing PhDs in their chosen field.

- **Award**
Masters
- **Duration**
One year (full-time)
Two years (part-time)
- **Start date**
September
- **Location**
West London Campus

Course overview

Our course is aimed at applicants with little or no previous psychology training and attracts a diverse range of students, both from within the UK and internationally. Specialist modules provide all the knowledge and subject skills, including the use of computer packages for statistical analysis, required by the BPS. There is a large taught component which builds your knowledge and confidence, and a strong focus on designing and conducting your own research projects throughout the course. It culminates in the final dissertation project, an opportunity to demonstrate your critical skills and creativity through the design and implementation of your chosen study.

Your dissertation supervisor will be an academic who conducts and publishes research in their own field, such as health, social, cognitive, educational or forensic psychology.

You will be assessed through research reports, essays, exams and by a variety of presentations. In addition, you are encouraged to present your work to others, both within our University and at national psychology conferences.

Modules

- Psychology Research Methods
- Development Across the Lifespan
- Social and Cross-cultural Psychology
- Cognition and Neuropsychology
- Personality and Intelligence in Psychology
- Applied Biological Psychology
- Dissertation.





MSc Psychology of Health and Illness

- **Award**
Masters
- **Duration**
One year (full-time)
Two years (part-time)
- **Start date**
September
- **Location**
West London Campus

If your interests lie in the psychology of health and illness, this MSc offers you a suite of relevant modules. The course aims to enable you to make informed judgements on complex health issues across diverse areas, and to communicate ideas and proposals effectively to diverse audiences.

Career options

Our course prepares you to work in a variety of roles and organisations, including health and/or behaviour change services, academia, charitable organisations, or the NHS. On completion, you may also wish to follow an MPhil/PhD programme.

This course does not confer stage 1 Health Psychology training.

Course overview

During this course, you will be provided with a grounding in the theory, themes, professional issues and practical skills central to the psychology of health and illness. The course contains taught components and applied assessments. It also has a strong focus on research that culminates with the final dissertation project, which will provide you with the opportunity to design and undertake an autonomous piece of research on any relevant area of psychology of health and illness.

You will be assessed through case studies, research reports, essays, verbal and poster presentation, critical review, portfolio and systematic review. In addition, you will be encouraged to present your work to others, both within our University and at national psychology conferences.

The course has established links with health organisations and behaviour change companies in smoking cessation and weight management, where you can gain work experience and carry out research.

Modules

- Biopsychosocial Issues in Health Psychology
- Practice and Professional Issues in Health Psychology
- Psychology Research Methods
- Advanced Research Methods Two
- Individual Differences in the Psychology of Health and Illness
- Chronic Disorder and Health Psychology Interventions
- MSc Psychology of Health and Illness Dissertation.

Entry requirements

A bachelor degree should be in a relevant subject area.

Entry requirements Please see page 133



Find out more at: uwl.ac.uk/postgraduate

MPH Master of Public Health



Open to students from all disciplines, including arts subjects, this innovative course provides an excellent grounding in the science and art of public health.

Career options

Public health knowledge and skills are in demand from a wide range of employers in the UK and internationally. This includes local government, national and international policy makers, the NHS and other healthcare providers, health charities and health non-government organisations (NGOs).

- **Award**
Masters
- **Duration**
One year (full-time)
Two years (part-time)
- **Start date**
September and February
- **Location**
West London Campus

Course overview

This course focuses on key public health disciplines from healthy public policy, epidemiology, research methods and methodologies and global public health.

It will develop your skills in critical analysis and synthesis, information and evidence retrieval, ability to read and absorb information from a wide range of sources, leadership and creativity to tackle public health challenges at global and local levels.

The course content has been developed with professional relevance in mind, and you will learn from highly skilled staff, many of whom conduct advanced research in their specialist areas. This will ensure that your period of study is both challenging and rewarding.

Modules

- Public Health and Health Systems
- Global Public Health Challenges
- Epidemiology and Biostatistics
- Research Methods for Public Health
- Leadership and Management for Public Health
- Health Policy and Principles
- MPH Dissertation

Plus one optional module

- Nutrition in Public Health
- Gender, Health and Development
- Public Health Economics
- Ageing Populations and Public Health
- Environmental Health

Other optional modules from Psychology

- Addiction Treatment Interventions
- Dual Diagnosis: Substance Use and Mental Health Disorders

Entry requirements Please see page 133

Find out more at: uwl.ac.uk/postgraduate





MA Record Production

- **Award**
Masters
- **Duration**
One year (full-time)
Two years (part-time)
- **Start date**
September
- **Location**
West London Campus

You will investigate the theoretical and practical production of recorded popular music under the guidance of a team that stands in the forefront of the academic study of music technology and record production.

Career options

Mastering the human and technical skills relating to music production equips you for roles such as record producer, sound engineer, post-production engineer, recording artist, studio manager, composer and re-mixer. Alternatively, you may pursue further academic study such as an MPhil/PhD.

Course overview

From advanced recording techniques, digital signal processing and mixing to managing sessions, pre-production, communication and performance in the studio, you will explore many different aspects of production in today's fast-changing music industry.

The course is particularly focused on the ways in which we can use an understanding of how people listen to music in order to produce it. You will also develop a portfolio of recordings and ideas about networking and dissemination to help you achieve your career goals.

Modules

- Approaches to Recording
- Performance in the Studio
- The Development of Audio Technology
- Combining Sounds
- Research Methods
- Manipulating Sounds
- Masters Project.

Entry requirements

In addition to your completed application form, you will need to provide:

- a portfolio of degree level or professional work
- a written statement.

Entry requirements Please see page 133



Find out more at: uwl.ac.uk/postgraduate

MSc Software Engineering

(Extended Masters and Internship options available)



The MSc Software Engineering course will give you an understanding of the latest software engineering technologies used to address today's challenges in software development as well as providing you with a practical understanding of the issues relating to the design, analysis and implementation of modern software systems.

Career options

Graduates in software engineering can expect to achieve well-paid positions in the software industry such as software architect, solution architect, project manager or senior software developer.

Internship option only applicable for full-time UK students.

Extended Masters with internship only applicable for May intake full-time UK students.

- **Award**
Masters
- **Duration**
One year (full-time)
Two years (part-time)
16 months (full-time with Internship)
15 months (Extended Masters)
19 months (Extended Masters with Internship)
- **Start date**
January and September
May (Extended Masters)
- **Location**
West London campus

Course overview

With the IT sector expanding rapidly around the world, there has never been a better time to develop specialist software engineering skills. Through the MSc Software Engineering course students will have access to industrial standard technologies, and be provided the opportunity to specialise in topics ranging from software architecture to implementation techniques, building on the necessary skills needed to tackle modern software systems in an industrial context. You will also become familiar with a broad range of current scholarship work in software engineering, learning how to research and review published work.

Internship option

The internship element is designed to give you the opportunity to gain valuable work experience and enhance your employability, as well as your personal and professional development. Your dissertation will be based on an eight-week period of engagement with an employer.

Modules

To qualify for the award of MSc Software Engineering, you must study six modules consisting of 20 credits; and a 60 credit dissertation module.

- Mobile Web Component Development
- Machine Learning
- Big Data Analytics
- Advanced Topics in Software Engineering
- Research Methods
- Dissertation.

Optional modules

Choose one module from:

- HCI for Information Systems
- Security Operations and Assurance.

Optional modules subject to availability.

Supporting modules

- Employability Skills and Employment (for Internship students only)
- Learning and Professional Development (for international students only)
- Programming Support.

Entry requirements Please see page 133



Find out more at: uwl.ac.uk/postgraduate



MA Strategic Financial Management

- **Award**
Masters
- **Duration**
18 months (full-time)
- **Start date**
February and October
- **Location**
West London Campus

Accelerate your accounting and finance career with this ground-breaking MA Strategic Financial Management degree that would also help you prepare towards the strategic professional stage of ACCA (the Association of Chartered Certified Accountants).

Career options

A career in accounting and finance comes with many opportunities, and with two globally recognised qualifications to stand by you, these are just some of the possibilities: consulting and advisory, audit and assurance, compliance and risk, business restructuring, business development or corporate finance.

Course overview

This course is for professionals working towards the ACCA professional qualification, or those who have already completed this professional qualification. Relevant exemptions would be granted to ACCA Affiliates and Members in good standing, with the possibility of completing this course in a shorter span of time. As the course content is 100% aligned to the ACCA Strategic Professional Level, it would prepare you for the ACCA Strategic Professional Level exams, whilst studying towards this Master's qualification.

This course is designed to develop a more advanced understanding of the theories and techniques of strategic financial management. It would also enable you to develop the specialist skills, behaviours and qualities required by professional accountants to successfully meet the future demands of the profession and make a more meaningful contribution to the organisations they work for.

Modules

- Ethics and Professionalism
- Strategic Business
- Strategic Reporting
- Advanced Financial Management
- Business Statistics and Forecasting
- Analysis Report – Current Issues in Accounting and Financial Management.

Optional modules

- One module from:**
- Advanced Taxation
 - Advanced Performance Management.



Entry requirements Please see page 133



Find out more at: uwl.ac.uk/postgraduate

MSc Structural Engineering

(Extended Masters available)



This course provides further learning and a pathway to becoming a professional engineer and expert in your field.

Career options

The course aims to equip students with knowledge and understanding of structural engineering within the context of civil engineering structures. Students will develop the skills base required for working as site or design office engineers. Students will also develop the skills required for involvement in new schemes and the rehabilitation of existing structures using traditional and advanced methods. The course can be the basis for further education, or a research position, progressing to study for PhD in Civil, Structural Engineering, and other technical PhDs in Engineering.

- **Award**
Masters
- **Duration**
One year (full-time)
15 months (Extended Masters)
- **Start date**
September
- **Location**
West London campus

Course overview

Our course will help you to advance your skills in structural analysis, design and adaptation. The course will also enhance your practical experience in the strengthening and retrofitting of structural buildings when refurbishment or function change is needed.

Throughout this Masters' course, we will help you to develop your ability to use computer modelling for the analysis and design of structures under technical uncertainty. You will have access to dedicated computing laboratories as well as a range of digital resources. You will also gain an insight into the broader issues of construction risk management, geotechnical problems and structural research. All these gained skills will help you to compete for working in design offices and construction sites.

Our dedicated professional academic staff have extensive experience in teaching, research and in industry which offer students the best possible facilities for conducting Masters level research.

Modules

All modules are 20 credits core modules except the dissertation which is 60 credits. You will need to do 120 credits through taught six modules plus the dissertation.

- Structural Systems Analysis
- Structural Adaptation
- Advanced Geotechnical Engineering
- Advanced Structural Design
- Research Methods
- Construction Risk Management
- Dissertation in Civil Engineering.

Additional modules (only for Extended Master)

- Advanced Study Skills
- Critical Thinking, Analysis and Evaluation
- English Support
- Statistics Support.

Entry requirements Please see page 133



Find out more at: uwl.ac.uk/postgraduate





MA Theatre and Performance Practice

- **Award**
Masters
- **Duration**
One year (full-time)
Two years (part-time)
- **Start date**
September
- **Location**
West London Campus

You will explore your practice as a performer and theatre practitioner. Working with language and text, you will investigate and develop your skills and knowledge of physicality and embodiment.

Career options

With a masters in theatre and performance practice you can go onto pursue a career in theatre. As well as theatre performance skills, you will have gained a broad range of transferable skills including a broad knowledge of a diverse range of theatrical styles, an ability to engage in professional dialogue, and an ability to work effectively with others.

Course overview

This course investigates your practice as an actor and a theatre practitioner. It allows you to consider innovative approaches to performing and curating performance events.

The course includes a Practice Research Project which allows you to share your development and findings within the field of performance and theatre practice. Throughout your studies, you will work within and be supported by the London College of Music, enabling you to collaborate across subject areas. You will have the opportunity to develop new work with practitioners on other courses.

Whilst developing your theatre practice skills, you will investigate the planning involved in studio practice, including the facilitation of workshops and leading rehearsals and carry these through to curating and creating performance events.

Modules

- Performing Language and Text
- Embodied Performance
- Contemporary Performance Practice
- Facilitating Practice
- Curating Performance
- Research Methods (for performance and theatre)
- Masters Project (Performance and Theatre Practice)

Entry requirements

A minimum of a 2:1 degree in or related to Performing Arts, Performance or Theatre.



Entry requirements Please see page 133



Find out more at: uwl.ac.uk/postgraduate

As soon as you start your course you will have access to a range of services and expert advice from our Careers Consultants who will help you identify and articulate your abilities as well as plan and manage your career. This support will continue after your course for as long as we can help you.

Making the most of career opportunities.



► For more information, please visit www.uwl.ac.uk/careers or email careers@uwl.ac.uk



Our Careers Service offers:

- Personalised, impartial and confidential advice and guidance on progression on a wide range of careers including job hunting, assessment and selection procedures and professional qualifications
- Careers workshops on topics such as professional networking, presentation skills, successful application and job search techniques
- Access to online careers resources including occupational information, practice psychometric tests
- CV and interview help and job hunting sources
- E-guidance for those who find it difficult to get to campus
- Sector-specific employer presentations sharing industry insights and application tips
- Individual appointments at a time to suit you including evening and Saturday mornings
- Convenient online system to book appointments, events and apply for jobs.

Our Employment Service offers:

- Information about vacancies with a wide range of regional, national and international employers
- Direct notification of new part-time and graduate vacancies tailored to your interests and subject areas
- Employment advice
- Employer presentations on campus.

Volunteering

Volunteering is the perfect opportunity to develop leadership, management and employability skills whilst having fun.

Our volunteering team can give you weekly updates about relevant opportunities in the local community and on longer term projects.

They will also advise you on choosing an opportunity that could enhance your career options.

By studying with us, you will join our global community of more than 150,000 graduates in over 50 countries.

Connected for life through our Alumni network.

Our Alumni Team works to support your lifelong relationship with the University.

As a student you can attend our alumni events to network with, and learn from our alumni.

When you graduate you can enjoy a range of benefits:


- Exclusive online and in-person alumni events and activities
- Alumni communications: Annual Alumni magazine, social media updates, e-newsletter
- Alumni card for access to the campuses and library after graduation
- Special alumni discounts

- Professional development workshops, careers fairs, webinars and courses
- Lifelong careers support
- Volunteering opportunities.

 @UWLAlumni

 UWLAlumniAssoc

 @UWLAlumni

 UWL Alumni Association – Official Group



► For more information, please visit www.alumni.uwl.ac.uk



We are committed to giving you the best university experience possible. So we are constantly updating our research, training and leisure facilities. It is an exceptional university experience, and one that makes you ready for your future career.

Modern facilities.

Libraries

As a student at UWL, you automatically belong to our libraries at Ealing and Reading which provide study spaces, computers and space to use your own devices.

The Paul Hamlyn Library at Ealing is open 24/7 during term time to enable you to study around your personal and work schedules. The library is a light open space, spread across three floors with different types of study zones and furniture to suit your needs. Our Reading Campus, the Berkshire Institute for Health, includes a specialist library serving the College of Nursing, Midwifery and Health. Each course has a Librarian who can help you with using the library's search tools so that you can find, evaluate and reference information sources. Additional support can be found within the library buildings as well as through drop-ins at the Brentford site and online via our 24 hour chat service.

The Brentford site also has a book collection and returns service. The library provides access to print and digital material including books, e-books, journals and databases, music scores and more.

Our online reading list system (UWLReadingLists) supports your studies and saves you time by providing quick links to resources recommended by your lecturer. All library sites are equipped with PCs, printers/ copiers/scanners.

Blast FM Studios

Every official student radio station needs its own broadcasting studio, and Blast FM has one. It is the perfect environment for future broadcasters as the teaching studio is right next door, so you can experience first-hand what a broadcasting career looks and sounds like.

Paragon Annex Studios

Our £1m+ investment in the Paragon Annex Studios makes London College of Music's studio complex one of the biggest in the UK. Combined with facilities at our Ealing campus we have 13 studios, 10 Live Rooms and four teaching studios and two audio Mac Labs and one of Europe's largest Rednet installation utilising the Dante audio network.

Weston Hall

The University's auditorium is a bright, comfortable and inspiring place to learn in. It can seat over 400 people at conferences, lectures, performances and academic events.

Performance Centre – Lawrence Hall

Our modern spaces immerses London College of Music students in the reality of professional performance and features a stage, LED lighting, advanced sound and audio visual systems, and a beautiful Steinway model D concert grand piano.



Paul Hamlyn Library



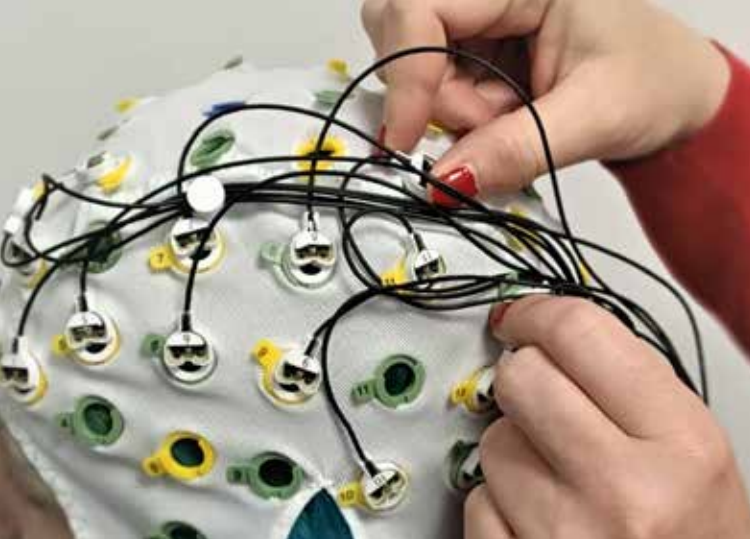
Paragon Annex Studios



Blast FM Studio



Performance Centre – Lawrence Hall



Performance Centre – Vestry Hall

A classical and popular music performance space featuring a Steinway model D concert grand piano, concert-tuned percussion and seating for 60. The hall is connected to two of the studios to allow recording of concerts and performances. The range of specialist equipment available from our fully-stocked media resource centre includes facilities for ambisonic immersive recording.

Simulation Centre for Nursing, Midwifery and Healthcare

Our centres in Brentford and Reading provide outstanding facilities and specialist teachers to help you learn and develop the practical and decision making skills required to work in modern healthcare settings. We also offer a wide variety of CPD courses to support your development to senior clinical roles.

The Richard Wells Research Centre

Our innovative centre is at the forefront of research into patient safety, mental health, midwifery, family health, and learning disabilities. Our nursing, midwifery and healthcare students find it invaluable.

Psychology Research Facilities

Our psychology research facilities include state-of-the-art brain imaging electroencephalogram (EEG), eye tracking equipment, virtual reality technology (Oculus Quest), and a range of experiment and research software. We provide access and a high standard of support for use of these facilities.



Simulance



The Faringdon Research Centre

Modern facilities (continued).

Professional-standard facilities

Our industry-specific training facilities are specially designed to prepare you for your chosen career, and are constantly evolving. Today, they include a concrete technology-testing laboratory, an architecture studio, geotechnics and soil engineering laboratories and a hydraulics laboratory.

Our facilities for our creative subjects include printing studios, a dark room, music practice pods, recording studios and performance spaces.

The Faringdon Centre

The Faringdon Centre (the non-destructive testing centre) is the latest development in the School of Computing and Engineering. It has a wide range of sophisticated technologies and equipment, including Ground Penetrating Radar systems (seven different sets of antenna systems from low to very high frequency antenna systems); a light Falling Weight Deflectometer (LFD); a 3D-Laser Scanner; an IBIS-FS Interferometric Radar System for monitoring structural movements and deflecting vibrations; and many more. The centre is carrying out several pioneering research projects in collaboration with industry and international partners.

Mock court room

Our impressive mock court room gives students at the School of Law a chance to practice mooting, trial strategy and advocacy. You will have legal training in a realistic, inspiring environment.

The Savoy Suite

This training suite gives future business people a taste of industry, thanks to its board room, presentation theatre and break-out area.

The Graduate Centre

The Graduate Centre supports doctoral students in the publication, dissemination and continuation of new research, as well as training PhD supervisors.

West London Food Innovation Centre

The West London Food Innovation Centre assists food and drink start-ups as well as small and medium-sized enterprises to turn innovative concepts into marketable products. It offers services ranging from product formulation to sensory evaluation and facilitates a scientific approach to new product development for its clients. Postgraduate students in Food Business Management will use the facility for the Applied Food Science and Product Development modules and possibly their dissertations.

Westmont Enterprise Hub

Westmont Enterprise Hub is an “Ideas Space” for early stage startups and an Incubator for entrepreneur pre-market businesses sourced from within the University (student staff, researchers and alumni) and from the local community. It provides endless opportunities to ideate, innovate and evolve business solutions using peer mentoring, specialists business advisors and effective networking opportunities through targeted meet-ups, workshops, coaching and mentoring within a bespoke plan of programmed intervention and support.

Biomedical Science Labs

The new Biomedical Science labs are fitted to an extremely high standard allowing us to deliver our modern, forward-looking curriculum at a practical level, providing laboratory training that will give you the best possible start as a research or clinical scientist. All the equipment in the labs from pipettes to microscope are identical to that used in modern pharmaceutical, nutritional and clinical laboratories.



Mock court room



Our University culture is all about support, diversity and inclusion. We believe that everyone has the ability to excel in their career, and that no one should miss out on expert training.

Life at the University of West London: Support.

► For further information
studentservices@uwl.ac.uk
 or telephone 020 8231 2345



Our culture of support

The UWL community is incredibly diverse: our students and tutors come from all over the world, and bring fresh perspectives, skills and areas of expertise to our vibrant learning environment. Our community is made up of people of all ages, ethnicities, abilities, religions and socioeconomic backgrounds.

Student Services

We want you to get the most out of your time with us, and encourage you to come and talk to us if you are worried about anything.

Student Advice Team (funding and money advice)

Confidential and specialist advice is available on student funding, budgeting, money management, welfare benefits and council tax exemption. The team can advise on extra financial assistance from a range of funds, scholarships and bursaries.

Disability Inclusive Practice Award 2021

UWL has been recognised for the individual and institutional efforts to support students with disabilities, by Aim Higher.

International Student Advice

The Student Advice Team offer advice to our international students. They will help with any questions about visa extension, your immigration status and support whilst studying.

Disability and Mental Health Support

Disability shouldn't be a barrier to learning. That is why we are fully committed to providing students who have learning differences, physical conditions or mental health difficulties with confidential support and specialist guidance.

Our Wellbeing Team can help you with:

- Individual Support Plans (ISP) – implementing reasonable adjustments eg extra time in exams, assistive technology, accessible learning materials, ergonomic chairs etc
- Help applying for Disabled Students' Allowances (DSA) funding
- Neurodiversity/Specific Learning Difference screening eg dyslexia, dyspraxia, AD(H)D and autism
- Diagnostic Assessments.

The support we offer you is flexible and tailored to meet your individual needs. If you have a disability or long term-health condition, contact us so we can discuss your requirements and guide you to any reasonable adjustment you might need.

Student Counselling

A team of dedicated counsellors are available for students who are experiencing difficulties. The Counselling Service is available to discuss any issues that may come up while you are at the University of West London.

The Welfare Team

The Welfare Team are non-judgemental, here to listen and offer a safe and welcoming service to all students who are worried, anxious or in crisis over personal problems. We provide impartial advice, support and information if you are concerned about issues such as relationships, stress, conflict, sexual violence, homelessness or abuse.

The Student Service Teams can link you to specialists who can give guidance on disability support, finance, mental health, homelessness and other personal problems which may be helped through counselling.





Life at the University of West London: Campus.

Just next door to the city centre, there are endless ways to explore the capital's art, culture and nightlife from our bustling west London campus in Ealing. The campus itself is surrounded by beautiful parks and green spaces, with plenty of lovely cafés and eateries to enjoy.

A beautiful campus environment

Studying at our Ealing site gives you the best of both worlds: beautiful green spaces on your doorstep, and the hustle and bustle of the city centre just a stone's throw away. Our campuses are all designed to enhance your student experience and provide amazing opportunities to connect with industry leaders in west London and central London.

Study next door to central London

Our west London campus has great transport links to central London, which is bursting with successful businesses, industry leaders and a career-driven culture that you can immerse yourself in.

When you are not busy exploring

the city's inspiring business districts, there are plenty of ways to soak up the culture. London is home to some of the UK's best art galleries, fashion exhibitions, museums, sport, music, comedy, theatre, nightclubs, restaurants and shopping.

Our Ealing site

Our modern Ealing site is a safe, comfortable and inspiring place to study. It has a laid-back and friendly atmosphere, with attractive surroundings.

It is also right in the middle of west London's prosperous business hub, and close to many of the employers we work with. You will have lots of chances to gain useful work experience, get first-hand knowledge of your industry and start building the connections you will need from here on in.

Our Brentford site

The Brentford site is home to three of the University's nine academic schools – School of Human and Social Sciences, College of Nursing, Midwifery and Healthcare and The Claude Littner Business School. This site is located close to our Ealing site with a free shuttle bus running between sites and Ealing Broadway.

Reading campus

The Berkshire Institute for Health, situated in Reading is home to our College of Nursing, Midwifery and Healthcare. The campus is 30 minutes from London Paddington by train.

Both our campuses will provide you with the best training and practical opportunities for your career.

Life at the University of West London: Accommodation.

We know that accommodation is key to your university experience and you want to love where you live. The University will support you to find suitable and safe accommodation.

We offer a range of options; including working with local residential hall providers to bring UWL students the best rates available. Our partners have sites in North Acton, a popular area for students with quick links to Campus and great connections to London via the Central Line.

We also have access to university-managed shared flats and houses at for students who would prefer not to live in residential halls. If you already have a group then our team can help you pick the right house or flat. If you want help finding a houseshare, then please let us know and we will do our best to find you the right group.

If you are studying at the Berkshire Institute for Health in Reading, we have strong links with local student accommodation providers, so you can feel safe in the knowledge that your home has our stamp of approval.

Any student that books with UWL not only gets access to exclusive rates, free contents insurance with Endsleigh and will not have to pay a deposit.



► For further information about accommodation visit www.uwl.ac.uk/accommodation, call 020 8231 2335 or email accommodation@uwl.ac.uk



Life at the University of West London: Your Students' Union.

Your Students' Union

One of the great benefits of being a student at the University of West London is that you automatically become a member of the Students' Union, voted the number one Students' Union from a Major University in the country (NSS 2021). The UWL Students' Union (UWLSU) are here for you throughout your studies and can help ensure you get the most out of your time here.

Representing you and your views throughout your academic experience is one of UWLSU's main roles. As a democratically-led organisation, three students are elected each year by the student body to represent the views of students at a senior leadership level. This means that your voice will be heard, and this voice is truly at the heart of everything that UWLSU does. UWLSU offers great opportunities through its course

rep scheme, student delegate roles and student positions throughout the organisation. These roles provide invaluable skills that can further enhance your academic qualifications and your time at university.

At UWL you will have access to over 10 different sports teams that train at the prestigious Ealing Trailfinders sporting grounds. There are also great on-campus training facilities like the brand new state-of-the-art UWL Sport and Fitness Centre which is run by the SU.

The diverse range of societies on offer is the best place to meet like-minded students and build a community. These common interest groups can be your gateway to making some new friends, career networking, extra-curricular activities, and opportunities to gain new skills and experiences.

Another way in which UWLSU supports students is through a free, impartial and confidential advice service. Professional staff members provide students with advice, information, and advocacy on a range of issues they may be facing, with a focus on academic issues.

As well as Welcome Week, UWLSU hosts a bumper events programme throughout the year including Black History Month, LGBTQ+ History Month and Halloween.



UNIVERSITY OF WEST LONDON
STUDENTS' UNION

► Get in touch:
Facebook @westlondonsu
Twitter @uwl_su
Instagram @uwl_su
www.uwlsu.com
020 8231 2276



Sport and Fitness Centre.

UWL's fitness facility is run by the Students' Union and consists of two modern gyms, two large fitness studios and spacious changing facilities.

The new Sport and Fitness Centre includes a large gym and fitness studio which is part of our on-going commitment to promote student wellbeing by having the best facilities available to maintain a healthy, balanced lifestyle.

Students will also be able to benefit from preferential booking arrangements at the new Gunnersbury Park Sports Hub that will include two external floodlit artificial grass pitches, natural grass cricket and football pitches, tennis courts, changing rooms, and a gym.

The centre has been funded by a joint partnership between UWL and two local councils.

Through the University's partnership with Trailfinders, students can access professional-level all-weather rugby pitches, grass pitches, a cricket ground, floodlit tennis courts, small football pitches and a gym.





At the University of West London, we welcome students from all over the world.

Welcoming our international students.

Before studying with us

Before joining us, you can get all kinds of support and advice from the International Office including how to apply and information about studying at the University.

To find out more, or to contact a member of the International team, visit www.uwl.ac.uk/international

During your studies

Once you have enrolled at the University, our support includes:

- an orientation programme, designed to include help with enrolment and social activities
- advice on finances and opening bank accounts
- information about student organisations across the UK.

You can also get specialist advice and support from our Student Services, including student support, visa assistance and information on finance and accommodation.

To find out more email international@uwl.ac.uk

Studying with us for a shorter period –

Study Abroad Programme

If you are already studying at a university in your home country and would like to study in London with us for one or two semesters, you can apply to take part in our Study Abroad Programme.

You will gain experience studying in London whilst also obtaining credits that may count towards your degree at your home institution.

Scholarships and funding

We offer international students the chance to apply for one of our 100 International Ambassador Scholarships worth up to £5,000. These are available for both January and September intakes; for more details visit www.uwl.ac.uk/international/fees-and-funding

US students may also be entitled to US Federal Direct Loans.

For further information about all available scholarships and funding for international students, please visit www.uwl.ac.uk/international

How to apply and entry criteria.

Applications for the majority of our postgraduate courses can be made directly to the University. Please use the 'course search' on our website to find your chosen course and then click on 'apply now'.

You will need to apply via UCAS for the following postgraduate courses

- PgDip Nursing (Adult)
- PgDip Nursing (Learning Disabilities)
- PgDip Nursing (Mental Health)
- MSc Paramedic Science (Pre-Registration)

To study with us, you will need to meet our general entry requirements (including English language requirements), as well as any other course-specific criteria.

The minimum entry requirements for postgraduate study:

- Honours degree from any university in the UK or Republic of Ireland
- Honours degree from an approved higher education institution outside the UK or Republic of Ireland
- Recognised equivalent professional qualification
- Industry experience equivalent to qualifications.

English Language Requirements (if your Honours degree was not taught in English)

Taught Masters:

- IELTS 6.5 or above (with no element under 5.5), or equivalent English Language qualification.

For PhD:

- IELTS 6.5 or above (with no element under 6.0), or equivalent English Language qualification.

This requirement may vary across our courses. Please refer to the course pages on our website for further information.

Portfolios

Some courses require a portfolio of your own work to show your creative or technical skills.

Auditions

Performance courses require you to attend an audition.

Interviews

You may need to attend an interview before we make you an offer.

Visiting us

We hold postgraduate open events through the year. Our postgraduate open events showcase all our postgraduate courses and are a great opportunity for you to visit us.

For details and to book a place, visit www.uwl.ac.uk/pgopenday



Fees and finance.

Postgraduate Loan

Students who live in England and are eligible can now apply for a postgraduate loan to help with costs associated with postgraduate Masters studies. The loan is a contribution to help with course-related costs such as tuition fees and materials.

Fees

Students have the option to pay in instalments.

UK/EU students:

- 34% in October 2022
- 33% in January 2023
- 33% in April 2023.

International students:

- 50% upon enrolment
- then three equal installments in November, December and January (Sept start only).

Students must pay their fees in full at enrolment, if they are taking:

- a single module course
- a course lasting less than one academic year
- a course with a fee of £250 or less.

Sponsored students

If your sponsor is paying your fees, you need to supply a copy of an official purchase order form before or at enrolment.

To find out how to pay your fees, please visit www.uwl.ac.uk/fees

You can also refer to our tuition fee policy on our website for more information www.uwl.ac.uk/about-us/policies-and-regulations

Help with funding

Make sure you apply for funding in plenty of time, so it is available from the start of your course.

Since funding is limited, it is important to consider how you will finance your studies before you begin your course.

Options may include:

- Loans
- Sponsorship from your employer
- UWL scholarships and research funding
- Research Council funding
- External trusts and charities
- Savings/salary from employment.

For further information about what funding is available please go to: <https://www.gov.uk/funding-for-postgraduate-study>

► For further information, please visit www.uwl.ac.uk/funding





If English is not your first language, or if your previous education was in another language, you will need to provide documented evidence of your English language competence.

English language requirements.

We accept a variety of English language tests, including International English Language Testing Systems (IELTS). The standard IELTS requirement is 6.5 overall, with a minimum of 5.5 in each element (Reading, Listening, Speaking and Writing). Other English language examinations will be considered at a level comparable to IELTS 6.5.

If you are applying for a PhD or professional doctorate, you must demonstrate your English language proficiency through evidence of IELTS at overall 6.5 (with a minimum of 6.0 in all four skills).

If you are a student based in a country where the school system is taught in English, you may not need to take an additional English language test and we may accept your general qualifications.

For more information on the specific requirements for your country, please contact the International Office at international@uwl.ac.uk

Pre-sessional English Language Courses

If you have not met the English language requirement to study a postgraduate degree course with us, you may be eligible for one of our pre-sessional English language courses. For pre-sessional English courses, please note that international applicants will be required to have a SELT (UKVI academic IELTS) as per UKVI regulations.

If you have any other qualifications not listed on our website, please email the International Office on international@uwl.ac.uk

Entry requirements: Symbol key.



UG Honours degree

These courses require applicants to have an undergraduate honours degree in a relevant subject.



DipHE or HND

Some courses will accept these alternatives to an undergraduate honours degree, in many cases this will need to be supplemented with relevant work experience.



Work experience

Candidates who do not meet the academic requirements may still qualify for entry through relevant work experience.

For some courses you must be working in the industry as a requirement of entry to the course. Please see individual course pages on our website for details.



Extended Masters

If you have completed an undergraduate degree and not met the entry criteria for your preferred course, you may qualify for our extended Masters option. It includes two additional modules.



Interview/audition

You may be invited to an interview or audition as part of your application process.



Portfolio

Candidates must provide a portfolio of their work showcasing their abilities and past work.



Professional qualification

A professional qualification may be an acceptable alternative to an undergraduate honours degree, or necessary for entry.



Additional or specific entry requirements

Specific requirements apply or additional entry routes are offered. Please check the course page on our website for full details.



Masters degree

Applicants shall normally have a Masters degree or equivalent in the relevant field of study.



Nursing Interview

If you have the qualification for this course you will attend an individual value-based interview online with an academic, clinician and a service user/carer (where available).



Nursing Portfolio

You will need to complete a portfolio for Evidencing Graduate and Transferable Skills, which is required for entry and be able to evidence 500 hours of formal 'hands on' healthcare experience, signed off by a registrant.



Ealing and Brentford...

Ealing campus

St Mary's Road, Ealing, London W5 5RF

Our Ealing campus is just 30 minutes on the Underground from central London or 10 minutes by fast train to Paddington. It is also 20 minutes from London Heathrow International Airport. Ealing has fast rail links from Reading and London, great local bus services, and it is easy to get to from all London Underground stations.

By bus

The nearest bus routes to the site are the 65, E2, E8, 207, 427, 607, E3 and E9.

By Underground

The closest Underground stations are South Ealing on the Piccadilly Line (10 minute walk) and Ealing Broadway which currently services the Central, District and Elizabeth Lines (15 minute walk). The Elizabeth line has now opened with Reading 48 minutes away, Paddington 10 minutes away and Liverpool Street 24 minutes away once the line fully opens.

By train

Ealing Broadway also has other regular train services to and from London Paddington (10 minutes), Slough (25 minutes) and Reading (50 minutes).

By road

The Ealing site lies on the B455 between the A4 and the A4020, Uxbridge Road. The M4 motorway is a few minutes' drive away from Ealing (Junction 2), and the A40, M40 and M25 are all easily accessible.

Brentford campus

Boston Manor Road, Brentford, Middlesex TW8 9GA

Our Brentford site is 1.5 miles south of the Ealing site. There are great bus and rail services nearby giving quick and easy access to central London. In addition, the free shuttle bus runs to and from both sites, and local tube stations.

By bus

The bus routes closest to the Brentford site are the 65, E2, E8 and H91.

By Underground

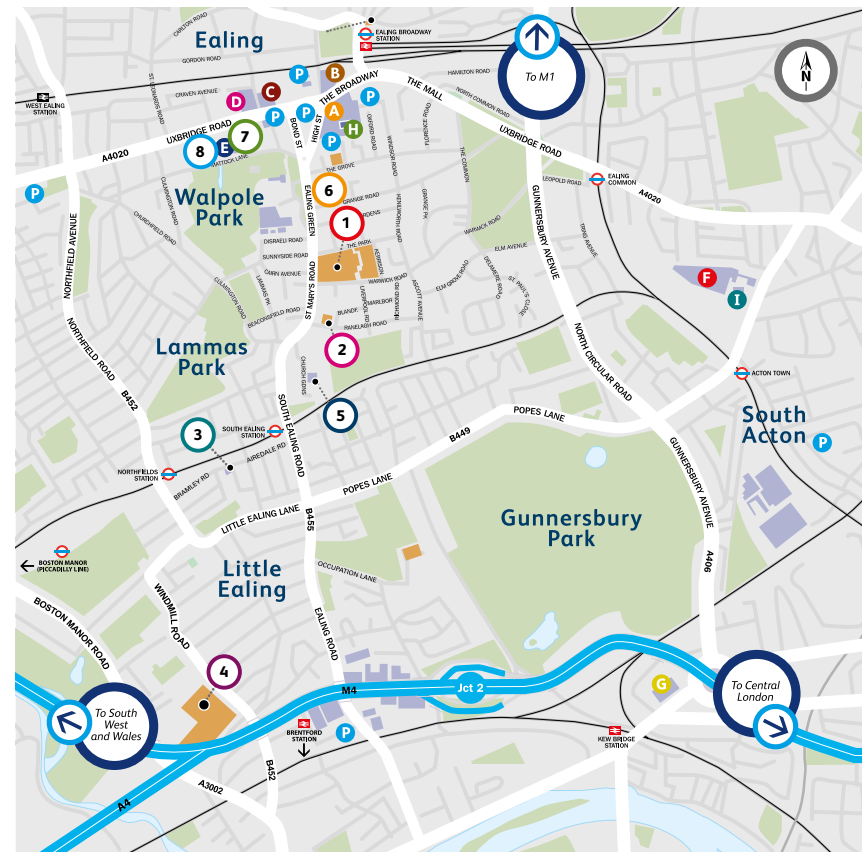
The nearest Underground station is Boston Manor on the Piccadilly Line (15 minute walk).

By train

Brentford mainline train station is a 5 minute walk from the Brentford site with scheduled trains into central London arriving at Waterloo station.

By road

The Brentford site is on the A3002, Boston Manor Road which is just off of the A4, Great West Road.



<p>University Buildings</p> <p>1 Ealing Site</p> <ul style="list-style-type: none"> Academic Office Accommodation Service Administration Bookshop School of Law London School of Film, Media and Design London College of Music London Geller College of Hospitality and Tourism Paul Hamlyn Library Pillars Restaurant School of Biomedical Sciences School of Computing and Engineering Student Services Students' Union 	<p>2 Vestry Hall</p> <ul style="list-style-type: none"> London College of Music <p>3 Bramley Road Surgery</p> <p>4 Brentford Site</p> <ul style="list-style-type: none"> The Claude Littner Business School College of Nursing, Midwifery and Healthcare School of Human and Social Sciences Nursing Simulation Centre 	<p>5 St. Mary's Church</p> <ul style="list-style-type: none"> London College of Music performance venue <p>6 Drama Studio London</p> <p>7 Cavendish House</p> <p>8 Century House</p>	<p>Additional Information</p> <ul style="list-style-type: none"> A Broadway Shopping Centre B Arcadia Shopping Centre C Ealing Town Hall D Ealing Civic Centre E Questors Theatre F Acton Hospital G Leisure Centre H Library I Sports Centre P Parking
--	--	---	--

...and Reading.

Reading Campus

Berkshire Institute for Health,
Fountain House,
2 Queens Walk,
Reading RG1 7QF

By bus

The local bus routes include the 15, 16, 17, 19, 20, 20a and 21.

By train

The Berkshire Institute for Health is within walking distance of Reading train station. From here, First Great Western offers good connection to both London and the South. London Paddington to Reading is less than 30 minutes.

By road

The campus is in Reading town centre, just off the A329 ring road, and there's parking nearby at Broad Street Mall. The M4 (Junctions 10 and 11) is just a few minutes' drive away and the M40 and M3 are easy to reach.



Important information (Disclaimer).

This Postgraduate Prospectus is intended as a general guide for prospective postgraduate students.

The University has made every reasonable effort to ensure the information provided in this Postgraduate Prospectus, is accurate at the time of publication. The University however does not represent or warrant that the information provided is accurate, complete, or current.

We recommend that you contact the University to check the current position on courses and services.

The University aims to provide the courses, University services and facilities described in this Postgraduate Prospectus. However, courses, University services and content of publications remain subject to change. Changes to courses and University services may be necessary in order to comply with the requirements of accrediting bodies, to keep courses current through updating best practices or areas of study, to improve the quality of educational services, or in response to student feedback.

Circumstances may also arise outside the reasonable control of the University leading to required changes. Such circumstances include industrial action, unexpected student numbers or lack of demand, significant staff illness (where a course is reliant upon a person's expertise), unexpected lack of funding, severe weather, natural disaster, epidemic or pandemic, fire, civil disorder, political unrest and government restrictions making a course unsafe to deliver or changes in applicable laws.

After a student has taken up a place with the University, the University will look to give early notification of any changes and try to minimise their impact, offering suitable alternative arrangements where possible.

Coronavirus (COVID-19) pandemic – potential changes to courses

Please note that information regarding teaching, learning and assessment in this Postgraduate Prospectus or on the University website endeavours to be as

accurate as possible. However, in light of the Coronavirus (COVID-19) pandemic, the changeable nature of the situation and any updates in government guidance, the University may need to make changes to the academic courses and the method of delivery. The University will make every effort to keep any necessary changes to a minimum. The University will keep current students and prospective students updated of any changes to their chosen course of study as soon as information becomes available.

Up-to-date information on courses will also be provided with an offer of a place to study where required. The latest key information on courses, entry requirements and fees can be found at www.uwl.ac.uk/students/postgraduate. Please check this website and/or contact the University at courses@uwl.ac.uk before making any decisions to ensure that you have the University's most up-to-date published information.

For full details see the University's Terms and Conditions available here www.uwl.ac.uk/terms

Copyright © University of West London 2022

All rights reserved. No part of this publication may be reproduced, stored in a retrieval system or transmitted in any form or by any means, electronic, mechanical, photocopying, recording or otherwise, without the permission of the University.

Published by
The University of West London

Artwork by
Moxx Creative Design

Printed by
A McLays

**University of
West London**
St Mary's Road
Ealing
London W5 5RF

**University of
West London**
Boston Manor Road
Brentford
Middlesex TW8 9GA

**University of
West London**
Fountain House
2 Queens Walk
Reading RG1 7QF

Tel: 0800 036 8888
Int: +44 (0)20 8231 2468

www.uwl.ac.uk



UniWestLondon



uniwestlondon



UniversityWestLondon



University of West London



University of West London

