



UNIVERSITY OF
WEST LONDON

The *Career* University



Postgraduate Prospectus
2024 Entry

*Gain the specialist know-how
that gives you the edge!*

A promotion, a career change...



...or a long-held ambition



Here for better options

Come to an open day and find out why you are going to love studying at the University of West London. Visit us on:

- Saturday 18 November 2023
- Wednesday 22 November 2023
 - Saturday 20 April 2024
 - Thursday 20 June 2024

To book a place, visit

www.uwl.ac.uk/pgopenday

Contents

Welcome	3
We've been building careers for decades – our history.....	4
Don't just take our word for it – our awards	6
Why study a postgraduate degree.....	8
Here for your future	10
Here for collaborations.....	11
Postgraduate research.....	12
Research degree.....	15
Research centres.....	16
Our Schools and Colleges.....	20
Course Index	32
Making the most of career opportunities	122
Connected for life – Alumni network.....	123
Modern facilities	124
Support.....	128
Our campus.....	130
Accommodation.....	131
Live your best life with the Students' Union	132
Sports Centre.....	134
Welcoming international students.....	136
How to apply and entry criteria.....	138
Fees and finance	139
English language requirements.....	140
Entry requirements: symbols key	141
Our locations	143
London campuses	144
Reading campus	146
Some important information	148

"Choosing the right university for your postgraduate studies is one of the most important decisions you will make. We hope this will help you make the best choice."

We aim to inspire you to become a creative professional and connect you to an exciting and rewarding career. Based in the heart of one of the UK's most successful business regions, we have highly qualified staff with a wealth of experience in their respective disciplines and strong connections with key industries.

The University has acquired a remarkable reputation for high-quality education closely linked to employment. Many of our graduates go on to achieve great success within their chosen discipline and professions.

Welcome to the career university.



Professor Peter John CBE
Vice-Chancellor

We've been building careers for decades

Over the years, leading academic institutions, career-specific training providers and industry specialists have come together to make us what we are today – a university dedicated to your career.

1860

The Lady Byron School is founded, later known as Ealing Technical College and School of Art from 1928. This became the Ealing College of Higher Education from 1975.

1991

The College merged with the Thames Valley College of Higher Education, London College of Music and Queen Charlotte's College of Health Care Studies to form the Polytechnic of West London.

1992

The Polytechnic becomes the Thames Valley University after being granted university status by royal assent.

1994

The University merges with Northwick Park School of Nursing, Riverside College of Nursing and the North West Thames Regional Health Authority's AIDS unit.

1995

The University merges with Berkshire College of Nursing and Midwifery.

2004

The University merges with Reading College and Ealing School of Art and Design.

2010

In July, the University closes its site in King's Road, Reading (now home to Reading College).

2011

In April, we are formally renamed the University of West London to reflect our new focus on the Ealing and Brentford sites. In May, Laurence Geller (a leading figure in the tourism and hospitality industry) is appointed Chancellor.

2015

The Ealing campus undergoes a £100m+ transformation. Now it has a new social area, library, students' union, auditorium, gym, restaurants and cafés, studios for the student radio station and music students, and teaching spaces.

2016

We buy the Brentford site (Paragon) giving us flexibility to grow and thrive.

2017

We invest over £1m in the development of the Paragon Annex studios and open a nursing Simulation Centre at Reading.

2018

Opening of the West London Food Innovation Lab and home to Heathrow Archives and exhibition and Westmont Enterprise Hub for Business Start-Ups.

2019

Opening of Rami Ranger House and the new sports centre. Drama Studio London becomes part of the UWL Group.

2020

Opening of the School of Biomedical Sciences which offers teaching in genomics, pharmaceuticals or a related industry.

2021

We successfully bid for over £5m of government funding to help improve the environmental sustainability of our operations. Ruskin College became part of the UWL Group.

2022

Almost **80 percent** of our research work has been rated as world-leading (4*) or internationally excellent (3*) in the latest Government assessment of research in higher education.

We have secured the **biggest percentage increase** of any university in the UK for research awarded the two highest ratings.

And for the first time ever, we are in the **top 100** universities in the UK for overall quality of our research

Don't just take our

word for it...



The Guardian University Guide 2024

No.32 university in the UK



UWL ranked 1st in London**,
3rd in England** and
4th in the UK**



No 1 modern*
university in London



Top 100 universities
in the UK for overall
quality of our research



£150m campus investment

Our stunning campus has a modern library – with over 200 open-access computers spread across the library including three IT suites, spacious study areas and comfy seating – plus a vibrant Students' Union, bar and restaurant and industry-leading training facilities including mac labs, simulations centres... we could go on!

Surrounded by brilliant businesses

Our Ealing campus is in the heart of one of the UK's most successful business regions. Through working with high-profile organisations and experienced tutors, we use our strong industry connections to help you gain career-specific insight, expertise and skills.

UWL is going green

The University is committed to protecting the environment and continually improving our environmental performance. We are working hard to embed a culture of sustainability across our University and become a net zero carbon campus by 2030.

A blend of highly respected Schools

Our expertise covers a wide range of subjects, so you can gain the specialist know-how that gives you the edge in your chosen career.

Postgraduate community

Our postgraduate community consists of over 1,000 postgraduate students across our academic Schools, the Graduate School and CELT (the Centre for the Enhancement of Learning and Teaching). We have 11 research centres spanning the arts, STEM, health, education and more. We focus on research that has a positive impact on real-world problems.

A postgraduate degree can enhance your career prospects, setting you apart in today's highly competitive job market. If you are considering a new career path, it is a way to enhance and build on your current qualifications and learn new, essential skills. You may also want to explore your passion for, and commitment to, a particular field of study.

Why study a postgraduate degree?

Whatever your reasons, studying a postgraduate degree at the University of West London does not mean you have to put your life on hold, or leave the workplace. Our full and part-time study options can fit around your current commitments. It will also grow your network and help you gain fresh, valuable insights into industry that you might not gain from the workplace alone.

Research degree or taught course?

Research degrees rely on independent study with regular support from supervisors. The best-known research degree is the PhD, which can last three to four years full-time, or five to six years part-time. Professional doctorate degrees are equivalent in status and challenge to a PhD but are intended to create knowledge that advances professional practice. In both PhDs and Professional Doctorates students are asked to research and present new knowledge in a thesis (typically 40,000 to 80,000 words in length, depending on the type of doctorate).

Taught courses are led by tutors, and in common with undergraduate courses, students attend weekly seminars and lectures. There is some independent learning, but not as much as in a research degree.

Professional Doctorates

Studying for a Professional Doctorate is a unique opportunity to turn your career into a qualification. Professional Doctorates are a flexible alternative to traditional PhD study and are aimed at managers and a wide range of practitioners who are experienced and who are working at senior and middle levels of their professions and organisations. It offers the opportunity to research your area of interest and expertise

while continuing to work. Our Professional Doctorate programmes are designed to increase students' capacity to learn from the problems, challenges and achievements that they encounter in their professional practice.

Above all, a professional doctorate is an opportunity to examine contemporary leading theories and research evidence, and to apply these within the professional context.

- Business Administration (DBA).
- Education (EdD).
- Health Studies (DHS).
- Policing, Crime and Security (DPCS).



Postgraduate studies can give you an employment edge, accelerate your progression and open up new paths. We know that everybody has different career goals, so our teaching is tailored to your individual needs as an aspiring professional. Our open, accessible and supportive learning environment ensures that you will thrive.

Here for your future

Business connections

We are based in the heart of one of the UK's most successful business regions. Our teaching staff are connected to their respective industries with many still active in their field, so they can pass on invaluable insights and specialist subject knowledge.

We have strong connections with many national and multinational organisations such as Heathrow Airport, BBC, Hewlett-Packard (HP) Ltd, Middlesex Law Society and the Savoy Education Trust.

Careers

We offer lifelong careers and professional development support to all students. This includes CPD (Continuing Professional Development) activity supported by one-to-one career coaching from our professional Career Consultants available to you at any point in your career journey and at flexible times to suit you. Our CPD support include:

- professional networking
- leadership skills
- careers management.

Volunteering

We provide a wide range of activities you can access working in our local community. There are projects suited to all interests and tailored to the amount of time you have whether that be a one off or a regular commitment. Volunteering not only helps out our community but it will allow you to make new friends and develop skills and experience which could help your career development. All volunteering is recorded and celebrated through annual volunteering awards.

Employment Team

When you are ready to start climbing the career ladder, or if you simply need a part-time job while you finish your studies, we can help. We will provide notifications of relevant vacancies, information direct from employers up to international level, and news about upcoming recruitment and employability events.

Work placements

Work placements are for students who are studying an internship programme and can be a great way to show employers that you have the skills, experience and capabilities they are looking for.

Our Placements Team can offer you:

- career-specific placements with recognised industry leaders
- regular updates about new placements
- information about recruitment and employability events.

Professional Teaching Qualification

Students with a teaching role are given the opportunity by the Centre for the Enhancement of Learning and Teaching (CELT) to gain Associate Fellowship of the HEA free of charge. This is a great way to achieve a professional teaching qualification, awarded by an internationally renowned professional body, which is much sought-after by employers. Furthermore, CELT provide professional development opportunities to research students with a teaching responsibility to help them enhance their teaching and/or supporting learning skills.

Here for collaborations

We have several partners across the UK and abroad.

UK Academic Partnerships

- Academy of Music and Sound.
- Collaboration for Leadership in Applied Health Research and Care (CLAHRC).
- Creative Academy.
- Linx.
- London School of Science and Technology.
- Met Film School.
- Nexus Institute of Creative Arts.

Overseas Academic Partnerships

- American Education Limited (ANC).
- Aventis School of Management.
- Business College Athens.
- Cyprus Institute of Marketing.
- Marbella International University Centre (MIUC), Spain.
- Met Film School, Berlin.
- Schweizerische Textilfachschule – (Swiss Textile College – STF).
- Singapore Raffles Music College.
- UWL RAK, United Arab Emirates.



We have a growing national and international reputation in practice-based and solution-driven research. It spans areas such as engineering, computing, hospitality, aviation, health, law, film, media, and music.

Postgraduate research

We focus on producing useful knowledge. Our research centres concentrate on socio-economic and creative issues with a view to generating solutions to social, economic, creative and technical issues.

As a doctoral student, you will be able to study within your School/ College, and in the Graduate School. You will take part in School-based research seminars, conferences, and other activities recommended by your supervisors. You will also follow a programme of research training in the Graduate School.

You will have the chance to discuss and present your research as you progress through your doctoral journey and to build networks with fellow doctoral students and researchers in your field.

We encourage all our PhD students to present their research and publish during their studies.

All postgraduate research students have access to a dedicated learning space with modern, convenient facilities. We provide space where postgraduate research students can socialise and network, or study and reflect, with convenient facilities including lockers, printing and photocopying, and tea and coffee facilities. We will welcome your application in any of the following subject areas:

School of Biomedical Sciences

- Ageing
- Ageing and Information and Communication Technology
- Ageing and Social Well-being
- Ageing, Ethnicity and Health
- Antibiotic Resistance/One Health Approach
- Biochemistry
- Bioengineering
- Cancer/Cancer Genomics
- Cell Biology
- Chronic Conditions and Successful Ageing
- Cognitive Ageing and Dementia
- Dementia Care
- Evidence-based Healthcare
- Healthcare Ethics
- Infection Control and Prevention

- Integrated Medicine
- Microbial Genomics
- Microbiology
- Microbiome Metagenomics
- Molecular Biology
- Musculoskeletal Biomechanics
- Non-pharmacological Interventions
- Odontogenic and Maxillofacial Bone Tumours
- Person-centred Health and Social Care.

The Claude Littner Business School

- Accounting and Finance
- Business and Management
- Leadership and Change
- Economics and Finance
- Risk Management
- Marketing and Global Strategy
- Sustainability.

UWL is ranked in the top 100 universities in the UK for the overall quality of our research.

REF2021 Research Excellence Framework

School of Computing and Engineering

- Applications of Non-destructive Methods in Civil and Environmental Engineering
- Architectural Technology
- Artificial Intelligence
- Built Environment
- Civil/Structural Engineering
- Computer Networking and Distributed Systems
- Computing Interaction Design, Usability and Global Software
- Construction Project Management
- Cybersecurity
- Digital and Audio Engineering
- Fibre Optics and Electronic Engineering
- Geotechnics and Soil Engineering
- Health Monitoring of Highway Infrastructures
- Human Computer Interaction
- Hydraulics and Water Engineering
- Information Security
- Materials and Concrete Technology
- Repair and Maintenance of Buildings and Structures
- Software Engineering.

London School of Film, Media and Design

- Adaptation Studies, Film Studies, Genre Studies, Genre Theory, Popular Fiction
- Architectural Studies
- Creative Writing, Screenwriting
- Filmmaking, Film Theory, Film and Philosophy, Screen Studies
- Gender, Technology and Work
- Media Arts, Art and Design History, Cultural History, Communication Design, Design and Visual Literacies

- Media History and Theory, Media Archaeology, Gallery and Museum Studies
- Media Studies, Media Transformations, Branding, Public Relations, Television, News and Journalism
- Modern Literature, Literary Theory, Literature and Philosophy
- Photography History and Theory, Media and Photography Practice, Photography and Philosophy, Literature and Photography
- Rethinking The Image.

London Geller College of Hospitality and Tourism

- Airline and Airport Management
- Sustainable Aviation
- Aviation Psychology
- Airline Gastronomics
- Ground Operations and Flight Safety
- New Food and Drink Product Development
- Food Upcycling
- Healthy Eating for People with Chronic Conditions (CVD, diabetes, dementia)
- Nutrition for Vulnerable People (children, adolescents and older adults)
- Plant-based Nutrition
- Sports Nutrition
- Human Trafficking in Hospitality, Tourism & Aviation Industries
- Risk, Resilience and Reputation -Management in Hospitality, Tourism & Aviation Industries
- Equity, Diversity and Inclusion in Hospitality, Tourism & Aviation Industries
- Tourism Cities and Mobilities
- Tourist Consumer Behaviour.

School of Human and Social Sciences

Criminology, Policing and Forensic Science

- Forensic Science
- Forensic Investigation
- Fraud and Corruption
- Investigative Interviewing
- Police Corruption
- Policing, Racism and Diversity
- Policing Drugs
- Police Governance and Complaints
- Private Security
- Safeguarding
- Social Justice
- Socio-Legal Studies

Education and Interdisciplinary Studies

- Gangs
- Organised Crime
- Comparative Criminal Justice
- International Criminal Justice and Tribunals
- Terrorism and Extremism
- US Foreign Policy
- International Politics of the Middle
- Intersectional Economics
- Liberatory Education
- Caribbean Diaspora Studies
- Applied Linguistics
- Education technology
- Social media and young people.

Psychological Sciences

- Attitudes Towards Sexual and Domestic Violence/Honour-Based Violence
- Compulsive Sexual Behaviours in the Digital Era
- Dual Diagnosis (Co-Existing Mental Health and Addictive Disorders): Interventions, Role of Peer Support, Impact of Stigma



- Ethnicity and Inclusion: access and provision of mental health and addiction services
- Gender in the Media
- Health Behaviours
- Identity, Norms and Personality Factors in Addiction
- Mental Health and Resilience
- Public Engagement and Arts-based Methods
- Therapeutic Use of Cannabis Based Products.
- Use of Virtual Reality
- Visual and Multisensory Perceptions and Cognitions.

School of Law

- Commercial Law
- Criminal Justice
- Cyber Crime
- Law Enforcement
- Prosecuting Digital Crimes
- Intellectual Property Law
- International Arbitration
- International Commercial Law
- International Criminal Law
- International Human Rights
- International Investment Law
- International Law of Armed Conflict
- International Organised Crime
- Litigation Finance and Third Party Funding
- Public International Law
- Trusts Law.

London College of Music

- Music/Audio Technology
- Record Production
- Multi-channel and Spatial Playback Formats
- Novel Interface Design, including Haptic Feedback Systems
- Composition
- 21st Century Performance Practices
- The Business of Music Making
- Pedagogy
- Dramatic Arts
- Musicology.

College of Nursing, Midwifery and Healthcare

- Ageing
- Child Health
- Healthcare Epidemiology
- Healthcare Education
- Healthcare Policy and Management
- Infection Prevention and Control and Communicable Disease Prevention Management
- Mental Health
- Midwifery and Women's Health
- Nursing Practice
- Patient Centric Care
- Public Health
- Social Policy
- Social Work
- Translational Medicine.

How to apply

To apply for a PhD, you need to submit a brief research proposal, your CV, the transcript of your highest qualification and an application form. For further information on how to submit your application online visit www.uwl.ac.uk/research/graduate-centre

The proposal helps us assess your suitability for higher degree work, including:

- Viability of the topic as a research study.
- Clarity of the topic.
- Methodology and the practicalities required for a research degree.
- Appropriate supervisor(s) to be appointed to support your research.

Additional Information

For additional information, contact the Graduate School at researchdegrees@uwl.ac.uk



Research degree

Doctor of Philosophy

A candidate for a PhD degree is expected to critically investigate and evaluate an approved topic resulting in an independent and original contribution to knowledge, worthy of publication in complete or abridged form. You must show evidence of your ability to undertake further research without supervision and must also present and defend your thesis by oral examination to the satisfaction of examiners appointed by the University.

A PhD is normally completed in three to four years (full-time) or five to six years (part-time).

Support for research students

When you are registered as a research student, you will be assigned two (sometimes three) supervisors who will guide and support your research. A key aspect to your study will be regular meetings and correspondence with your supervisors and engagement with the activities of the Graduate School, including a mandatory programme of research training.

We run an annual conference for doctoral students, where participants are encouraged to present a paper or poster on some aspect of their research. You will also have other opportunities to present your research such as postgraduate student seminars and forums, and seminars within your subject area.

► For more details on becoming a research student at the University of West London, please visit www.uwl.ac.uk/research

Research centres

Research at the University of West London spans a broad range of fields across the arts, STEM, health, education and more. We focus on research that has an impact on real-world problems, drawing on our close ties with businesses and industries as well as the expertise of our staff.

We have built up particular specialisms in the following five areas. Each of our Research Centres is staffed by experts with an enviable record of publications, conferences, media and public engagement work in their chosen fields.

Geller Institute of Ageing and Memory

The Institute will develop new evidence-informed approaches to the training and professional education of carers. We will provide support and training for those who care in the home as well as in protected settings. We will use the emerging research to inform practice in dementia care at all levels. We aim to support staff who work across the sector by providing a stepped framework of knowledge, skills and behaviour. This will be attached to qualifications to validate learning with a series of credentials.

Current research in the Institute focuses on:

- Multi-sensory Approaches in Dementia Care
- New Technologies and Dementia Care
- Ageing and Memory
- Community and Home-based Approaches
- The Arts and Dementia Therapies
- Person-centred Care in Complex Cases
- Early Onset and Location Problems
- Epidemiology of Ageing.

We will make greater use of simulations and explore the Age Exchange experience as a partner. (The Age Exchange works to promote intergenerational understanding and improve the quality of life for those with dementia.)

Policy and Practice Research Institute for Screen and Music (PRISM)

The Institute focuses on impacting research in the music and screen industries and draws on the University's long history of expertise in film, music, advertising and the performing arts. PRISM is particularly focused on encouraging interdisciplinary research which breaks down traditional barriers in the humanities and social sciences..

CEILUP

The Centre for Inequality and Levelling Up (CEILUP) aims to produce policy relevant research that can shape approaches to addressing inequality in the UK. The Centre will focus in particular on developing practical solutions to the challenges that face the UK in the early 21st century related to inequality in employment, education and opportunity.

Focus on research



A new report from University of West London's Professor Ben Hine, titled *Lost Dads, the Fathers and Family Breakdown, Separation and Divorce Project (FBSD Project)*, is the most comprehensive examination of the experiences of separated fathers to date.

While many studies have looked at the impact of family breakdown on women, few have considered the mental health impact on men, particularly in their role as fathers. This new report brings together extensive new research conducted with over 1,000 men and six organisations to help answer this question.

The most pressing finding is the severe mental health impact on men, including suicidal

ideation, and the report explores why men may be more likely to take their lives than women following family breakdown. He concludes that, as a society, we must act, not only to support separated fathers, but to change the attitudes and stereotypes behind their experiences.

Fathers play such a valuable role in the lives of children, whether parents are together or not. Enacting the recommendations in this report would not only help to tackle a major unseen mental health crisis, but also greatly enrich children's lives.

► For more information visit
uwl.ac.uk/lostdads



Research centres (continued)

West London Food Innovation Centre

The West London Food Innovation Centre assists food and drink startups as well as small and medium-sized enterprises to turn innovative concepts into marketable products. It offers services ranging from product formulation to sensory evaluation and facilitates a scientific approach to new product development for its clients. Postgraduate researchers in Food Business Management and Nutrition Science will use the facility for experimentation and new product development in Sports Nutrition and Airline Gastronomics.

Cybersecurity and Criminology Centre

The Cybersecurity and Criminology Centre is a hub for interdisciplinary research and public engagement in cybersecurity, crime and their intersections.

The International Centre for Hospitality and Aviation Resilience Management (ICHARM)

This Centre provides an inclusive platform for interdisciplinary impactful research within the context of hospitality, tourism and aviation, focusing primarily at the management of reputation, risk and resilience in these industry sectors.

The Centre's goal is to address the most important and pressing issues in hospitality, tourism and aviation by fostering outstanding research, drawing on cutting-edge ideas and practices and collaborating with leading experts from both the academic and practitioner communities.

European Institute for Person-Centred Health and Social Care

The last decade has brought with it an increasing recognition that chronically ill patients need more comprehensive forms of assistance, mandating a need to move away from our current approaches to the management of these conditions and towards newer models of care that are personalised, integrated and contextualised.

The European Institute for Person-centred Health and Social Care will rapidly signal the University of West London's entry into this new and high profile field of academic enquiry.

The Faringdon Research Centre for Non-Destructive Testing and Remote Sensing

The Faringdon Research Centre for Non-Destructive Testing and Remote Sensing explores new avenues of research into the development and enhancement of non-destructive testing equipment and remote sensing methods. Within this context, the Centre carries out research and consultancy work on the applications of non-intrusive methodologies and techniques. The Centre utilises both hardware and software technology in their research and consultancy projects.

Our particular areas of expertise are:

- Health Monitoring and Assessment of Ancient Trees, Urban Trees and Tree Roots
- Health Monitoring and Assessment of Highways, Airfields, Bridges and Tunnel Structures
- Mechanical Properties of Ballast Foundations of Railway Tracks
- InSAR Satellite Imaging and Immersive Technologies.

Institute of Policing Studies

Institute of Policing Studies (IPS) is an exciting new development and reflects the increasing role of Higher Education in the policing community in London and the UK.

The advent of cyber-enabled and cyber-dependent crime has provided fresh policing challenges alongside existing issues appearing in these new contexts. Leadership in policing routinely covers international boundaries and jurisdictions, but the core skills of policing remain.

The Institute will promote these aspects of professional policing while reflecting on the lessons learnt from historic investigations such as the Yorkshire Ripper case, the Steven Lawrence enquiry and modern cases and critical incidents.

The Richard Wells Research Centre

The Richard Wells Research Centre conducts an active programme of research focusing on improving patient safety. The Centre conducts primary research, undertakes guideline development and review and, through its work as an internationally accredited centre for evidence-based practice, carries out comprehensive systematic reviews.

Our particular areas of expertise are:

- Patient Safety and Infection
- Mental Health
- Midwifery and Family Health
- Learning Disability
- Dementia Research.

► For more information visit
www.uwl.ac.uk/research/research-centres



Our Schools and Colleges



School of Biomedical Sciences

Prepare for a rewarding career enabling you to make a real difference to human health by studying a course focused on developing practical skills informed by cutting-edge research.

Our School offers a range of exciting and stimulating degrees designed to expand your knowledge, develop your personal and interpersonal skills and enhance your employability.

Whichever course you choose, you will work in an environment that takes you seriously, to help you realise and develop your potential. Our postgraduate degrees prepare you for a wide range of careers in healthcare, biotech industry, teaching and research – whether you want to work in the NHS, in academia, medical research laboratories, pharmaceutical research, the food industry, as a private therapist, in health

education and public health or areas such as international aid and development.

School staff include leading researchers in their fields, in diverse areas including genomics, bioinformatics, pharmacology, person-centred care, ageing and memory, and translational medicine. As a postgraduate, you will be part of a learning environment that includes cutting-edge research. You will also be part of an interdisciplinary community, sharing relevant modules with students studying other scientific degrees, but also specialising in the area that fascinates you most.

All postgraduate courses include a capstone project allowing students to focus their studies on their respective career goals.

The Claude Littner Business School

A multi-award winning Business School bringing students and businesses together. Creating unique learning opportunities. Here for enhancing experience and employability.

At The Claude Littner Business School, we believe in creating a learning environment that fosters collaboration. We work closely with an ever-growing number of businesses to support their capability to thrive in a competitive global market. As a student, you can expect to be involved in this work.

Our School is a unique mix of academics and industry professionals, offering you a wealth of knowledge and experience. Whether your interest is in digital business, human resource management, international marketing, finance, capital markets, investment or leadership, we will prepare you to be a highly effective professional in the real world.

We are based in the heart of west London's commercial district, and our strong links with business and professional associations ensure that our students benefit from a career-focused curriculum. We have one of the highest graduate employability rates in the country.

Through industry-based projects students can apply their knowledge and skills to actual real-world problems. Aspiring entrepreneurs can find support to develop their business ideas.



A connected education:

- Providing a seamless transition from education to career.

Enhanced career prospects:

- One of the UK's highest graduate employability rates.



A connected education:

- Ongoing exchange of ideas and leading practice.

Enhanced career prospects:

- Internationally recognised expertise.

School of Computing and Engineering

Because technology is the catalyst for growth. Here for people who want to lead the way.

Get to grips with the ground-breaking technology that is transforming society and business. Whether you are interested in computer science, software development, security and networking, information systems, artificial systems, information management, engineering (civil, environmental and digital audio) or the built environment; our internationally recognised School of Computing and Engineering is here to help you progress.

Our full-time and part-time postgraduate courses meet the needs of industry and research to provide the perfect forum for exchanging ideas and leading practice in civil engineering, civil and environmental engineering, digital audio engineering, software engineering, construction project management, computer science,

health informatics, artificial intelligence and information systems. We will build on your undergraduate understanding of theory, practice and application, while providing advice, support and collaborative research and knowledge transfer activities.

Our teaching and research expertise in usability, internationalisation, software engineering, analytical and modelling methods is highly regarded and world leading in certain areas. We are confident that we will help you develop one or more specialist practice areas that will increase your employability in the UK and abroad.

We look forward to welcoming you to the School of Computing and Engineering which has recently invested in industry standard facilities and research centres.

"Our Masters courses aim to provide further learning opportunities for students to have a good vision of the knowledge in the industry and be more successful in future career prospects."

Professor Kourosh Behzadian
Course Leader of MSc Civil Engineering



London School of Film, Media and Design

Alumni who work in TV, Film, Games, Journalism and Advertising, win creative awards and come back to share their expertise. Here for giving you the creative and technical support you need.

Our courses in film, media and design draw on the expertise of our inspirational staff and alumni. We ensure our students leave with the skills and experience they need to thrive in today's industries. Whatever aspect of the creative and media industries you are interested in, we have a wide range of courses that are relevant, exciting and professionally orientated.

Our graduates have gone on to work with organisations such as the BBC, Sky and River Island, among many others, and you may have the opportunity to undertake placements with such organisations.

We are all about professionalism. For us it is an attitude and a way of doing things, and a vital element in gaining employment. If you decide you want to set up your own business, we can give you the entrepreneurial insights you need.

We have created a supportive and well-equipped environment in which you can pursue your interests and passions, and make the most of your time with us.

We look forward to welcoming you to the London School of Film, Media and Design.

A connected education:

- Courses developed and led by experienced and renowned staff and academics.

Enhanced career prospects:

- Employability skills are central to everything we do.

A connected education:

- Supported by guest lectures from industry professionals.

Enhanced career prospects:

- Internationally respected as a provider of industry-relevant courses.

London Geller College of Hospitality and Tourism

Where real-world experience meets academic rigour. Here for people who want to go places.

London Geller College of Hospitality and Tourism has over 70 years of teaching expertise, the College is accredited by leading professional bodies, including the Institute of Travel and Tourism.

The College attracts tourism, aviation and hospitality teachers of international repute. It also enjoys excellent working relationships with a range of local, national and international organisations.

We aim to provide a high quality tourism and hospitality environment that combines theoretical and hands-on learning. Features include our training restaurant 'Pillars', twice named London Training Restaurant of the Year; tourism and hospitality teaching suites; a flight simulator and a Food Innovation Centre.

We look forward to welcoming you to the London Geller College of Hospitality and Tourism.

"This course allowed me to fast track to a management position with IAG. I now travel extensively around Europe and enjoy a truly challenging and rewarding career in the organisation."

MA International Tourism and Aviation Management student



School of Human and Social Sciences

Empowering and equipping you to shape a sustainable, just and healthy society.

Combining practical teaching with strong links to the wider professional sphere, the School of Human and Social Sciences provides an environment in which you can develop the knowledge, skills and confidence you need for your future academic and professional development. We believe strongly in encouraging students to learn independently, supported by an experienced and committed team of teaching staff.

Our teaching is enhanced by several suites of recently refurbished laboratories, equipped with modern instrumentation. Together, these

enable us to have a wide range of practical sessions in psychology, physiology, biochemistry, chemistry, biology and molecular sciences.

We have strong links with professional bodies in the sciences, including The British Psychological Society (BPS).

We look forward to welcoming you to the School of Human and Social Sciences.



The British Psychological Society
Accredited

“As a BPS accredited course the MSc in Health Psychology is both interesting and challenging. It is also great that lecturers at the University of West London are so approachable and helpful. A thoroughly enjoyable experience.”

MSc Health Psychology student



School of Law

Supervision and support from people who know the world of legal practice inside out. Here for people who want to do justice to their ambition and skills.

A connected education:

- Supported by experienced and committed staff.

Enhanced career prospects:

- Teaching leads to highly confident professionals.



At the School of Law you will join a diverse, supportive community. You will benefit from being taught by dedicated and enthusiastic tutors, who have a wide range of academic, professional and practical skills and experience relevant to the courses they teach. A number of tutors engage in highly specialised academic research, others are professionally focused, having practised as solicitors in city, regional or high street firms, government offices or charities. Some are barristers and magistrates.

We run a range of postgraduate courses, many of which are internationally and commercially focused. If your interest is in qualifying as a solicitor, then you can opt for our LL.M or Postgraduate Diploma in Legal Practice.

Our facilities include a mock court room, equipped with leading technology, which brings learning to life and provides the ideal venue for student mooting competitions.

You will have the opportunity to engage in extra-curricular activities to enhance your study experience by joining and participating in the Student Law Society. Society events have included tours of legal institutions, mooting competitions, quizzes, dinners and international study tours.

The University is close to the centre of legal administration and policy in Parliament, the Royal Courts of Justice, the new Supreme Court, the Old Bailey and the Inns of Court. We also have excellent links with legal professionals working in the commercial, high street and not for profit legal sectors.

A connected education:

- Professional guest lectures and hands-on legal experience.

Enhanced career prospects:

- Alumni network and professional contacts providing placement opportunities in small and large solicitors' firms and marshalling.

London College of Music

Focused courses taught by practising industry experts.
Here for people who want to be heard.

Explore your creative potential at one of the largest specialist music and performing arts institutions in the UK, London College of Music (LCM). Whether you are interested in performance, composition, music technology, performing arts or music management, we are here to help you discover and nurture your talent.

Our ground-breaking courses, delivered with creativity and passion, are respected worldwide and our graduates are in high demand. You will be taught by practising industry experts, while visiting staff from all over the globe bring you fresh perspectives.

Our courses are based in west London, the hub of the UK's music and media business. Depending on your course, you will have access to our recording and production studios, and a multi-functional performance space. We will help you actively engage with networking opportunities, gaining invaluable experience beyond your specialist area of study.

We welcome students who share our passion for music education and exploration.



A connected education:

- Access international expertise and networks through visiting staff.

Enhanced career prospects:

- Our ground-breaking courses are respected worldwide.



College of Nursing, Midwifery and Healthcare

Academic rigour and a strong focus on clinical skills. Here for people who want to deliver the best healthcare. Here for you!

Whether you're pursuing a new career path or wanting to enhance your clinical knowledge and skills. We're here for people who want to deliver the best healthcare. We're here for you!

The College of Nursing, Midwifery and Healthcare offers a wide range of postgraduate courses. These range from pre-registration courses for those wishing to train to become a registered nurse, to post-registration courses for those wanting to boost their healthcare career, through the development of advanced/specialist practice.

If you're studying a pre-registration course, you'll spend 50% of your time studying and 50% learning in the clinical environment. We partner with a wide range of NHS Trusts and private, voluntary and independent sector healthcare organisations, to offer a diverse range of healthcare

placements, ensuring you are job ready. Our simulation centres equipped with the latest technology (virtual reality and immersive rooms), will help you practise/further enhance your clinical skills in a safe environment, whilst being supported by expert dedicated staff.

Our post-registration courses are designed to be flexible, enabling you to fit your studies around work and other commitments. You will learn from knowledgeable and skilled academics, many of whom conduct leading-edge healthcare research. Our courses provide the opportunity to learn along-side clinicians from a wide range of NHS Trusts and private healthcare organisations, enabling you to build networks, supporting your career progression.

We look forward to welcoming you to the College of Nursing, Midwifery and Healthcare.

A connected education:

- Our links with some of the largest NHS Trusts in the country, provide excellent learning opportunities.

Enhanced career prospects:

- A postgraduate qualification from CNMH is an investment in your future, facilitating a diverse and rewarding career path, that really makes a difference!

Institute for Policing Studies

The Institute for Policing Studies (IPS) is an exciting new development within the University. Its creation reflects the increasing role of Higher Education in the policing community in London and the UK.

The policing landscape has changed dramatically over the last decade and police education has changed to meet the new demands of cybercrime, terrorism and to reflect the increasing "social" role that the police play in dealing with victims in the community.

The advent of cyber-enabled and cyber-dependent crime has provided fresh policing challenges alongside existing issues appearing in these new contexts. Leadership in policing routinely covers international boundaries and jurisdictions, but the core skills of policing remain.

The Institute promotes these aspects of professional policing while reflecting on the lessons learnt from historic investigations such as the Yorkshire Ripper case, the Steven Lawrence enquiry and modern cases and critical incidents.

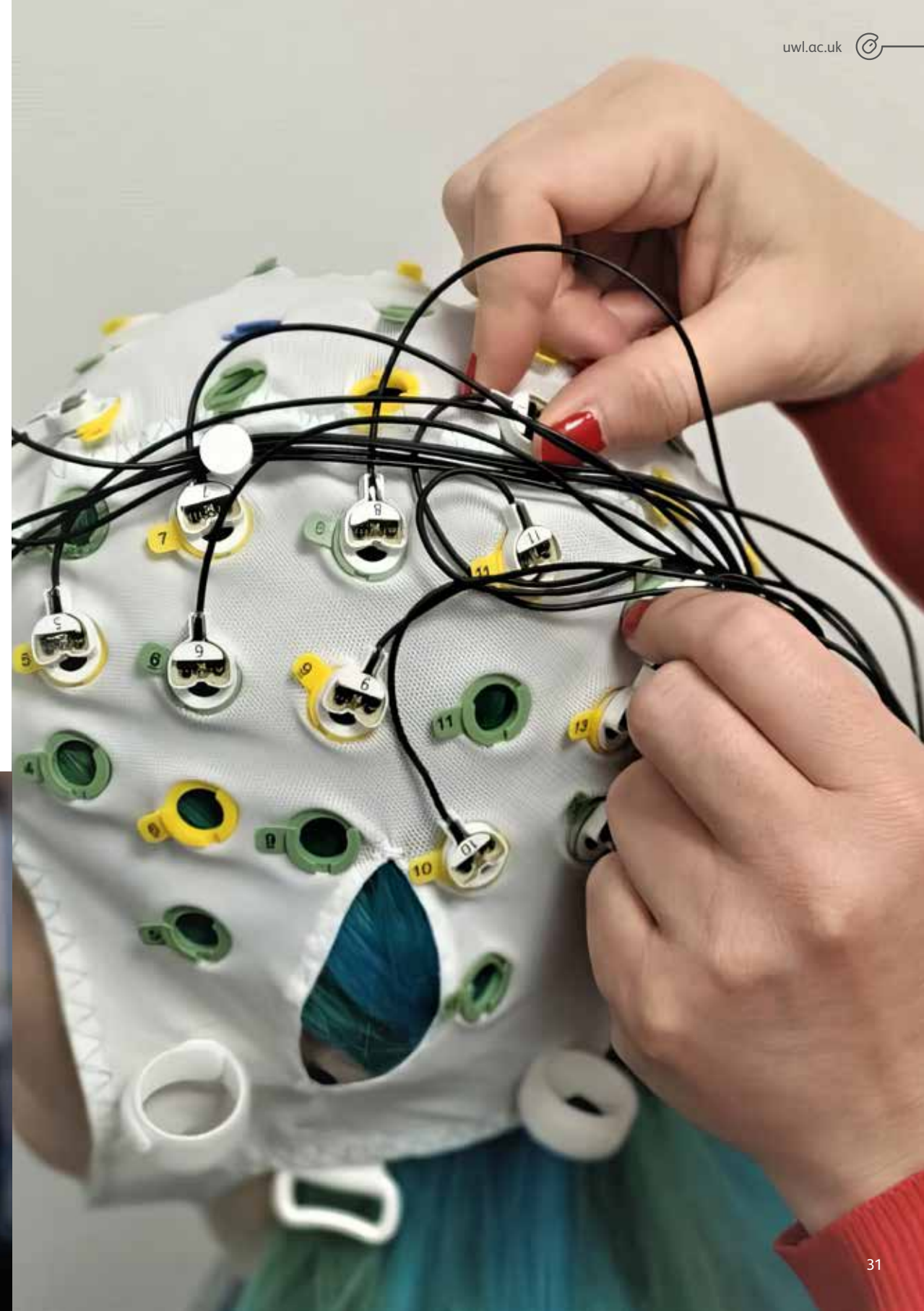
The scale and scope of what officers police in the UK is wide-ranging; from lost children to rural crime, from natural disasters such as flooding to public order events, from terrorism to dealing with victims of sexual assault and domestic violence. The British model of dealing with a serious crime such as homicide is world-class and the Institute's staff have experience in major investigations in the UK, America, and the Middle East.

A connected education:

- Taught by staff with a strong operational background in policing and extensive academic experience.

Enhanced career prospects:

- We pride ourselves on bridging academia and practical policing.



Course index

School of Biomedical Sciences

MSc Bioinformatics	42
MSc Bioinformatics Scientist	43
MSc Biomedical Engineering	44
MSc Clinical Science	51
MSc Clinical Science (Bioinformatics Genomics)	
MClinSc Bioinformatics Genomics	52
MSc Clinical Science (Clinical Biochemistry)	
MClinSc Clinical Biochemistry	53
MSc Clinical Science (Clinical Histopathology)	
MClinSc Clinical Histopathology	54
MSc Clinical Science (Clinical Informatics)	
MClinSc Clinical Informatics	55
MSc Clinical Science (Clinical Microbiology)	
MClinSc Clinical Microbiology	56
MSc Clinical Science (Genomics Counselling)	
MClinSc Genomics Counselling	57
MSc Clinical Science (Haematology and Transfusion Science)	
MClinSc Haematology and Transfusion Science	58
MSc Clinical Science (Immunology)	
MClinSc Immunology	59
MSc Clinical Science (Pharmaceutical Science)	
MClinSc Pharmaceutical Science	60
MSc/PgDip/PgCert Dementia Studies: Contemporary Approaches to Practice	67
MSc Person-Centred Health and Social Care	114

The Claude Littner Business School

MSc Business Analytics	46
MBA Consultancy for Innovation and Change	64
MSc Digital Marketing	70
MSc Finance and Accounting	72
MSc Finance and Economics	73
MSc Finance and Risk Management	74
MSc Finance and Sustainability	75
MSc Finance and Technology	76
MA Human Resource Management	81
PgDip Human Resource Management	82
MSc International Business Management	89
MBA Masters in Business Administration	98
MA Strategic Financial Management	119

School of Computing and Engineering

MSc Applied Project Management	40
MSc Artificial Intelligence	41
MSc Civil and Environmental Engineering	47
MSc Civil Engineering	48
MSc Construction Project Management	63
MSc Cyber Security	66
MSc Digital Audio Engineering	68
MSc Health Informatics	79
MSc Information Systems	85
MSc Mathematics and Statistics	99
MSc Software Engineering	118
MSc Structural Engineering	120

London School of Film, Media and Design

MA/PgDip Advertising, Branding and Communication	38
MA/PgDip Brand Design and Innovation	45
MA Interior Environment Design	86
MA International Fashion Brand Management (three pathways)	90

London Geller College of Hospitality and Tourism

MSc/PgDip Advanced Air Mobility Management	34
Executive MSc/PgDip/PgCert Air Transport Operations and Management	39
MSc/PgDip/PgCert Digital Hospitality and Travel Leadership	69
MSc Food Business Management	77
MA International Tourism and Aviation Management	92
MA Luxury Hospitality Management	96
MSc Nutrition, Health and Wellbeing	111

School of Human and Social Sciences

MA Criminology	65
MA Global Black Studies, Decolonisation and Social Justice	78
MSc Health Psychology	80
MSc Psychology Conversion	116

School of Law

LLM International Banking and Finance Law	87
LLM International Business and Commercial Law	88
LLM International Studies in Intellectual Property Law	91
LLM Legal Practice (LPC)	93
PgDip Legal Practice Course (LPC)	94
LLM Legal Practice (Top-up)	95

London College of Music

MA Advanced Music Technology	36
MMus Composition	61
MMus Composition for Film and Television	62
MMus Electronic Music Composition	71
MA Music and Performing Arts Education	102
MA Music Industry Management and Artist Development	103
MMus Performance (Classical, Jazz, Popular)	113
MA Record Production	117
MA Theatre and Performance Practice	121

College of Nursing, Midwifery and Healthcare

MSc Advanced Clinical Practice	35
MSc Advancing Professional Practice	37
MSc Clinical Practice	49
PgCert Clinical Practice (Independent and Supplementary Prescribing)	50
MSc Improvement Science	83
MSc Infection Prevention and Control	84
MPH Master of Public Health	97
MMidwifery (2 years shortened)	100
MMidwifery (3 years pre-registration)	101
PgDip Nursing (Adult)	104
MSc Nursing (Adult) Blended Learning – Pre-registration	105
MSc Nursing (Adult) On Campus – Pre-registration	106
PgDip Nursing (Learning Disabilities)	107
MSc Nursing (Learning Disabilities) Blended Learning – Pre-registration	108
PgDip Nursing (Mental Health)	109
MSc Nursing (Top-up)	110
MSc Paramedic Science – Pre-registration	112

Institute for Policing Studies

MSc Policing	115
--------------------	-----



MSc/PgDip Advanced Air Mobility Management* (Internship option available)

This unique course enables graduates to become leaders of change in the world of unmanned aerial vehicles and urban air passenger transport.

What you will study

This course is designed, with the help of industry partners, for those wishing to pursue a career and further their knowledge in the field of advanced air mobility (AAM), which encompasses unmanned aerial vehicles, small urban air passenger vehicles and regional passenger aircraft. Graduates will develop the skills, knowledge and expertise to become leaders of change, with the vision to accelerate the expansion of the AAM sector in a safe and sustainable manner.

The course covers a whole-systems perspective of the AAM sector, from policy and regulations to vehicle design, airspace and physical infrastructure through to safety, security and operational planning.

Where your career will take you

Graduates will find employment opportunities within transport, logistics and planning, such as infrastructure planning at airports and vertiports, airspace design and modernisation with regulatory and air traffic management organisations, drone operations and training providers, aviation and engineering consultancies and air cargo and freight logistics companies. You may also wish to pursue a career in education and research.

- **Award**
Masters
- **Duration**
MSc part-time 18 months/
PgDip full-time 1 year
- **Start date**
January/September
- **Location**
West London Campus
Online (distance learning)

Entry requirements



Please see page 141

For applicants who do not have this, one of the following must be met:

- currently hold or have previously held a professional aviation licence, such as an Air Transport Pilots' Licence (ATPL), Aircraft Maintenance Licence (Cat A or B) or Air Traffic Controller licence, and evidence of a minimum of two year's continuous employment in the aviation/transport/travel industry
- evidence of a minimum of five years' continuous employment in the aviation/transport/travel industry at a managerial level or equivalent.



Get in touch:

0800 036 8888

courses@uwl.ac.uk

* subject to validation



MSc Advanced Clinical Practice

This course has been designed for experienced UK registered health professionals with an advanced clinical practice focus to their role. The course will enable you to combine expert clinical skills with research, education and clinical leadership, specific to your clinical specialism.

What you will study

This course combines the 'four pillars' of Advanced Clinical Practice – research, education, clinical skills and clinical leadership – to empower you to practice with autonomy in your scope of practice and manage complexity in both decision-making and clinical presentations.

You will establish a clear professional identity, be able to identify key areas of improvement, and take leadership over research-based projects built to improve patient experiences.

Where your career will take you

This Advanced Clinical Practice award will prepare you to undertake an advanced practice role across a wide variety of healthcare settings. If you are a healthcare professional, this award could take you to the next step of becoming an Advanced Clinical Practitioner.

- **Award**
Masters
- **Duration**
Part-time 3 years
- **Start date**
September
- **Location**
West London Campus/
Berkshire Institute for Health

Entry requirements



Please see page 141

- qualification of an equivalent standard
- have GCSE English and Maths (Grade 9-4/A* - C) or Level 2 functional skills equivalents
- be a registered healthcare practitioner with a relevant professional body (NMC, HCPC) in the UK and have a minimum of three years post-qualifying experience
- be in a role that will allow you to develop advanced clinical practice skills.



Get in touch:

0800 036 8888

courses@uwl.ac.uk

NMC
Nursing &
Midwifery
Council

hcpc
health & care
professionals
council



MA Advanced Music Technology

Would you like to expand the range of your music technology capabilities and explore new techniques?

What you will study

The course focuses on current topics, from direct-to-stereo and ambient recording through non-linear techniques to the evolving arena of surround-sound mixing and recording. It will also encompass software interface programming and its use within electro-acoustic composition and performance.

The London College of Music (LCM) has more than 20 studios, including 5.1, 3D sound and a dedicated radio studio, and you will have access to an extensive range of specialist equipment.

You will be able to call on a diverse range of musicians to collaborate, record and network with throughout the course.

Where your career will take you

When you graduate, you will have the technical mastery of the latest hardware and software which will make you attractive to a wide range of employers and competitive in the constantly evolving music industry.

- **Award**
Masters
- **Duration**
Full-time 1 year/
Part-time 2 years
- **Start date**
September
- **Location**
West London Campus

Entry requirements



Please see page 141



Get in touch:

- 0800 036 8888
- courses@uwl.ac.uk

MSc Advancing Professional Practice

Extend your health or social care expertise through this innovative and flexible course, designed for experienced practitioners from a range of disciplines looking to progress within their role.

What you will study

This course aims to develop your professional skills and knowledge, enabling you to make a significant contribution to health and social care delivery. You will develop skills in critical appraisal and decision-making. You will also learn how to design strategies to manage complex scenarios and use evidence to generate innovative and creative solutions in your practice.

Designed to be distinct from the MSc Advanced Clinical Practice, it is aimed at those who are in/moving towards roles in leadership/management, or practitioners who are pursuing a clinical route (intensive care nursing, midwifery practice, mental health nursing, or addiction studies).

Where your career will take you

A Masters degree is an established academic pathway for healthcare professionals. This MSc Advancing Professional Practice course has been designed for experienced UK registered healthcare professionals, who are looking towards Masters study to enable them to progress within their professional role.

- **Award**
Masters
- **Duration**
Part-time up to 4 years
- **Start date**
September
- **Location**
West London Campus/
Berkshire Institute for Health

Entry requirements



Please see page 141

- be a registered healthcare practitioner with a relevant professional body (NMC/ HCPC) in the UK
- be working in a role where you can apply your learning during the course and be supported
- ideally have a minimum of three years post-qualifying experience
- ideally have a degree, but we will consider applications from those without, in a senior professional role and able to map professional experience to Level 6 descriptors (equivalent to the final year of undergraduate study).



Get in touch:

- 0800 036 8888
- courses@uwl.ac.uk





MA/PgDip Advertising, Branding and Communication

Challenge your creativity, be inspired and create meaningful campaigns that stand out from the crowd.

What you will study

This course has all the benefits of a Masters/PgDip in Communication combined with practical skills and industry experience in advertising and branding.

You will develop strategic and creative thinking, advertising tactics, and communication skills, used to create innovative advertising, and brand and design campaigns for businesses. You will also work on briefs set by leading companies and be mentored by industry professionals.

Through projects, lectures, group tutorials, industry visits and our own conferences, you will develop an in-depth understanding of professional brand communication and advertising strategy.

Where your career will take you

When you graduate, you will have the opportunity to work across a broad range of careers spanning the industries of advertising, marketing, media, design and communications.

- **Award**
Masters/Postgraduate Diploma
- **Duration**
MA full-time 14 months/
PgDip full-time 1 year
- **Start date**
September
- **Location**
West London Campus

Entry requirements



Please see page 141



Get in touch:

📞 0800 036 8888

✉️ courses@uwl.ac.uk



Executive MSc/PgDip/PgCert Air Transport Operations and Management

Do you already work in the aviation industry and want to advance your career?

What you will study

This course is designed for busy industry professionals who want to learn and achieve a Master's whilst continuing in employment.

Whether you are looking to deepen your knowledge of the aviation industry, change careers or enhance and develop your skills to a managerial level, you will have the opportunity to gain skills and knowledge in contemporary aviation topics such as digital technology, sustainable development and crisis management.

There is the opportunity to develop contacts with like-minded professionals in different aviation sectors, markets and regions and to share ideas and collaborate.

Where your career will take you

The course is designed to accelerate your career in the aviation industry. You could go on to work for airlines and airports, or in areas such as operational management and logistics or commercial management.

- **Award**
Masters/Postgraduate Diploma/
Postgraduate Certificate
- **Duration**
Executive MSc part-time
18 months/
PgDip part-time 1 year/
PgCert part-time 6 months
- **Start date**
January/September
- **Location**
Online delivery

Entry requirements



Please see page 141

- evidence of a minimum of one years' continuous employment in the aviation/transport/travel industry or a closely related field.

For applicants who do not have this, one of the following must be met:

- currently hold or have previously held a professional aviation licence, and evidence of a minimum of two years' continuous employment in the aviation/transport/travel industry
- evidence of a minimum of five years' continuous employment in the aviation/transport/travel industry at a managerial level or equivalent.



Get in touch:

📞 0800 036 8888

✉️ courses@uwl.ac.uk



MSc Applied Project Management

On this practical course, you will examine the role of applied project management in specific sectors and discover how to plan, control, monitor and deliver successful projects.

What you will study

In recent years there has been a growing awareness and appreciation of the benefits of using project management techniques across a wide range of business settings.

On this career-oriented applied project management course, you will learn how to use structured concepts and frameworks to tackle unstructured, complex real-world scenarios. You can expect to see core theories reflected and tested in your case studies and in-course assessments.

The course will help you gain the generic skills and understanding that you need to fulfil your particular business and organisational needs.

In addition, you will gain experience with supporting software such as Microsoft Project Management.

Where your career will take you

Graduates will be ready to join the project management team in many different organisations – from SMEs (small and medium-sized enterprises) to the largest global corporations.

- **Award**
Masters
- **Duration**
Full-time 1 year/
Full-time with internship 20 months/
Extended Masters and Enhanced
Extended Masters 15 months/
Part-time 2 years
- **Start date**
September
- **Location**
West London Campus

Entry requirements



Please see page 141

MSc Artificial Intelligence

If you would like to be at forefront of the ongoing technological revolution then our MSc Artificial Intelligence course is for you.

What you will study

Theories and fundamentals of AI and machine learning will be taught in both lecture and workshop formats. You will be supported through participation in industry and research seminars, group discussions, presentations and coursework.

On this course you will:

- develop a systematic understanding of the AI domain
- gain in-depth knowledge of AI techniques and develop intellectual skills to create well-justified solutions
- develop expertise to plan, design and implement appropriate AI solutions in practical scenarios
- gain substantial practical experience, and learn to prepare for the future challenges of AI
- gain a solid foundation for applied research in artificial intelligence
- prepare for work in a rapidly evolving and technologically diverse environment.

Where your career will take you

This degree provides you with the skills to meet the needs of the industries that are recognising the transformative potential of AI, from healthcare to manufacturing to the automotive industry.

- **Award**
Masters
- **Duration**
Full-time 1 year/
Part-time 2 years
- **Start date**
September
- **Location**
West London Campus

Entry requirements



Please see page 141



Get in touch:

📞 0800 036 8888
✉️ courses@uwl.ac.uk



Get in touch:

📞 0800 036 8888
✉️ courses@uwl.ac.uk



MSc Bioinformatics

This course equips you with bioinformatics expertise, preparing you for diverse careers in healthcare, biotechnology, research, and academia.

What you will study

You will study biomedical data management and analyses including genetics and genomics data such DNA, RNA and proteins. You will study software sustainability and ethical considerations, as well as interdisciplinary research methodologies.

You will develop practical skills in data analysis, integration and visualisation, whilst exploring data governance, communication techniques and research collaboration. The program emphasises professionalism, including ethical standards and awareness of technical advances.

You will acquire a strong foundation in computational biology, using programming languages and tools. You will also study statistical analysis, mathematical modelling and data curation and storage. This comprehensive course will prepare you for a successful career in bioinformatics, promoting scientific integrity and technological advancement.

Where your career will take you

After completing this course, you will be prepared for diverse roles in bioinformatics, data science, software development, research, or academia. Your expertise will be valuable in industries ranging from healthcare to biotechnology and beyond.

- **Award**
Masters
- **Duration**
Full-time 1 year/
Part-time 2 years
- **Start date**
September
- **Location**
West London Campus

Entry requirements



Please see page 141



Get in touch:

- **0800 036 8888**
- **courses@uwl.ac.uk**



MSc Bioinformatics Scientist

This course empowers you to excel in state-of-the-art bioinformatics tools and knowledge, paving the way for careers in healthcare, biotechnology, research and academia.

What you will study

In the MSc Bioinformatics Scientist degree, you will study various aspects of bioinformatics and data science. This degree covers topics such as version control tools, database management, data ethics and software sustainability. You will explore research methodologies in bioinformatics and interdisciplinary life sciences, along with understanding data governance, curation and information architecture. Effective communication, teamwork and data interpretation are emphasised. Practical skills include data retrieval, analysis, programming and the application of statistical and mathematical modelling. The course has integrated work-based practice, preparing you for a career as a skilled bioinformatics scientist.

Where your career will take you

After completing the MSc Bioinformatics Scientist degree, your career opportunities span academia, healthcare, research and industry. Roles include bioinformatician, data scientist or research scientist, facilitating scientific advancements.

- **Award**
Masters Apprenticeship
- **Duration**
Full-time 2 years
- **Start date**
February/September
- **Location**
West London Campus

Entry requirements



Please see page 141

- level 2 English and Maths for apprenticeship.



Get in touch:

- **0800 036 8888**
- **courses@uwl.ac.uk**



MSc Biomedical Engineering

If you want to contribute towards transforming medicine and social care then our MSc Biomedical Engineering degree is for you.

What you will study

Biomedical engineering is one of the fastest-growing engineering disciplines, and this Masters course will be a fundamental stepping stone into this amazing industry.

Through a range of specialist modules, our MSc course delivers intensive training in the fundamentals of Biomedical Engineering and will supply you with the technical skills required to excel in this rapidly growing industry.

As well as playing a key role in our efforts to live healthier, longer, and happier lives, technology improves diagnostics, treatments and management of many health problems. This course will give you an opportunity to develop advanced specialist knowledge in these areas combined with essential research skills.

Where your career will take you

There are many potential areas of employment open to Biomedical Engineering graduates, including digital health, healthcare start-ups, consultancy, hospitals and many more!

- **Award**
Masters
- **Duration**
Full-time 1 year
- **Start date**
September
- **Location**
West London Campus

Entry requirements



Please see page 141



MA/PgDip Brand Design and Innovation

Develop strategic and creative thinking, as well as communication and design research skills, to create innovative brand design.

What you will study

Through our extremely practical modules you will develop brand strategy skills to an advanced level as a designer and researcher. You will explore the design process of creating clear, engaging brand stories through the development of client-based projects.

You will have the opportunity to work on briefs and brand narratives, and be mentored by industry professionals. Besides working individually, you will be versatile in team collaboration, highly valued in the creative marketplace.

You will explore how design drives and responds to revolutionary thinking through questioning the norm and speculating on possible futures and alternative presents.

Where your career will take you

When you graduate, you will have the opportunity to work across a range of careers within the creative, advertising and design industries, including art direction, product innovation and creative management.

- **Award**
Masters/Postgraduate Diploma
- **Duration**
MA full-time 14 months/
PgDip full-time 1 year
- **Start date**
September
- **Location**
West London Campus

Entry requirements



Please see page 141



Get in touch:

- 📞 0800 036 8888
- ✉️ courses@uwl.ac.uk



Get in touch:

- 📞 0800 036 8888
- ✉️ courses@uwl.ac.uk



MSc Business Analytics

Whether you want to kick-start a brand-new career, boost your existing experience, or change career direction, studying MSc Business Analytics will help you achieve your goals.

What you will study

This course enables you to benefit from the expertise of direct contacts in the industry who will bridge the gap between academic rigour and practical relevance. Teaching delivers a pastoral approach and provides a unique hands-on learning experience for you.

Throughout, the course embeds and develops core technical skills and approaches, which bolster business analytics training, key processes and methodologies. You will be able to fine-tune these acquired techniques through projects that require these skills to be embodied and integrated holistically.

By the end of the course you will be able to apply your knowledge and skills to complex business projects, demonstrate your acquired technical abilities in business analytics, conduct independent research and make practical recommendations on real-life business issues.

Where your career will take you

The course will provide a platform for careers with local and international companies as well as high-growth businesses confronting world-scale challenges.

- **Award**
Masters
- **Duration**
Full-time 1 year
- **Start date**
September
- **Location**
West London Campus

Entry requirements



Please see page 141

Students not holding a first degree but with practical industry experience of over 5 years will be offered an interview so that their eligibility to embark on the course can be assessed.



Get in touch:

- 📞 0800 036 8888
- ✉️ courses@uwl.ac.uk



MSc Civil and Environmental Engineering

This course equips you with advanced civil engineering skills while considering sustainable solutions and environmental responsibility.

What you will study

This course provides you with a platform to advance your analytical skills in core subject areas such as structural analysis, sustainability, geotechnics, and hydraulics.

Throughout the course, you will learn to employ modern IT techniques to solve complex problems.

You will have several opportunities to design solutions to civil engineering challenges, both individually and as part of a team.

Your final dissertation will provide you with the opportunity to conduct research at the postgraduate level in a specific area of civil and environmental engineering, structural engineering, or construction management.

Throughout your studies, you will have access to a dedicated computing laboratory. Additionally, the University library offers a wealth of resources to support both the academic and professional aspects of the course.

Where your career will take you

Once you graduate, you could go on to work with consulting civil engineering companies, structural engineering firms, contractors, local/national government and utility companies.

- **Award**
Masters
- **Duration**
Full-time 1 year/
Full-time with internship
20 months/
Extended Masters and Enhanced
Extended Masters 15 months/
Part-time 2 years
- **Start date**
September
- **Location**
West London Campus

Entry requirements



Please see page 141

We may also offer you a place based on a combination of an ordinary degree (eg BSc/BEng in engineering without honours) together with relevant experience from within the work environment.



Get in touch:

- 📞 0800 036 8888
- ✉️ courses@uwl.ac.uk



MSc Civil Engineering

If you are looking for a pathway to become a professional engineer in various fields of contemporary civil engineering, this course is for you.

What you will study

This course will advance your analytical skills, research knowledge and technical understanding and focuses on the use of industrially relevant applications and IT skills in the main subject areas of civil engineering, including:

- structures
- materials
- geotechnics
- hydraulics
- transport infrastructure engineering
- construction management.

The course will also enable you to use analytical methods and modelling tools for the analysis and design of civil engineering structures, while providing opportunities for you to demonstrate your ability to apply relevant analytical and experimental skills for the analysis and design of civil engineering structures under technical uncertainty.

Where your career will take you

MEng graduates typically secure positions with civil engineering contractors, design consultancies, surveying subcontractors, utilities companies and structural engineering organisations, while others decide to work in education.

- **Award**
Masters
- **Duration**
Full-time 1 year/
Extended Masters and Enhanced
Extended Masters 15 months
- **Start date**
September
- **Location**
West London Campus

Entry requirements



Please see page 141

We may also offer you a place based on a combination of an ordinary degree (eg BSc/BEng in engineering without honours) together with relevant experience from within the work environment. All applications are considered individually.



MSc Clinical Practice*

This course is designed to support healthcare practitioners in developing the knowledge and skills to work effectively in their chosen specialism.

What you will study

This clinically focused course has been developed for UK healthcare professionals who are recently qualified and wish to develop their specialist knowledge and skills, or who wish to extend their skill set in a new area of clinical practice.

The flexible structure of the course means it can be tailored to meet your individual needs. You can opt for one of three awards: PgCert, PgDip, or the MSc.

The course allows you to choose from a range of optional modules to suit your clinical needs, and these can lead to 'badged' awards, such as Independent and Supplementary Prescribing, Acute Care, Intensive Care, Critical Care, Care of the Older Person, Out of Hospital Care, Midwifery, Mental Health, Psychosocial Interventions, Urgent Care, and Addiction Studies.

Where your career will take you

Our course improves your prospects in healthcare by providing you with the opportunity to further enhance your clinical knowledge, skills and confidence in your clinical practice.

- **Award**
Masters/Postgraduate Diploma/
Postgraduate Certificate
- **Duration**
MSc part-time 3 years
(up to 4 years maximum)/
PgDip part-time 2 years
(up to 3 years maximum)/
PgCert part-time 1 year
(up to 2 years maximum)
- **Start date**
September
- **Location**
West London Campus/
Berkshire Institute for Health

Entry requirements



Please see page 141

- be registered with a UK professional body (Health and Care Professions Council or Nursing and Midwifery Council)
- be based in the UK.



Get in touch:

📞 0800 036 8888

✉️ courses@uwl.ac.uk

For updated
information,
please check
the course
page on our
website.

Get in touch:

📞 0800 036 8888

✉️ courses@uwl.ac.uk



* subject to validation



PgCert Clinical Practice (Independent and Supplementary Prescribing)*

This course is intended for registered nurses (level 1), midwives, paramedics and physiotherapists looking to further their professional development.

What you will study

This clinically-focused award has been designed to have a significant impact on your practice by providing you with the knowledge and skills to manage an entire clinical episode, both non-pharmacologically and pharmacologically, of a patient's presentation. Learning will take place in a multi-professional environment using a wide range of approaches to learning and teaching, including practice-based learning, an integral element to the course.

Where your career will take you

Career progression for a paramedic or physiotherapist:

Successful completion of this course will lead to eligibility for a paramedic/physiotherapist to apply to become annotated with the Health and Care Professions Council (HCPC) as an independent and supplementary prescriber.

Career progression for a nurse, midwife or specialist community public health nurse:

Successful completion of this course will lead to eligibility for a nurse/midwife/specialist community public health nurse to apply to become annotated with the Nursing and Midwifery Council as an independent and supplementary prescriber.

- **Award**
Postgraduate Certificate
- **Duration**
Part-time 9 months
- **Start date**
September
- **Location**
West London Campus/
Berkshire Institute for Health

Entry requirements



Please see page 141

- be a health or social care practitioner with a current registration with a UK professional body
- be working in a relevant health or social care environment so that you can meet the learning outcomes of the course.

MSc Clinical Science*

Our Clinical Science course provides extensive specialisation options, paving the way for meaningful and impactful careers in healthcare – join us!

What you will study

The MSc Clinical Science course offers diverse specialisations. Phase 1 covers fundamental clinical science concepts, professionalism, leadership, quality improvement, research, innovation and healthcare development.

In Phases 2 and 3, you specialise. Clinical Biochemistry students delve into molecular-level chemical processes, mastering analyses of body fluids and tissues and developing new tests. Haematology and Transfusion Science learners investigate and interpret haematological presentations, ensuring assay quality and practicing patient-centred care.

Genomics Counselling students explore genetics' impact on disease management and apply advanced counselling skills. Bioinformatics Genomics students use programming for efficient genomics data handling. The course empowers clinical scientists with versatile skills for healthcare advancement.

Where your career will take you

A clinical science career offers diverse roles like Clinical Biochemistry, Genomics Counselling, Pharmaceutical Science and more. Graduates can lead in diagnostics, research and healthcare policy, pursuing specialisations and advancing through continuous learning.

- **Award**
Masters
- **Duration**
Full-time 1 year/
Part-time 2 years
- **Start date**
February/September
- **Location**
West London Campus

Entry requirements



Please see page 141

- level 2 English and Maths for apprenticeship.

For updated information, please check the course page on our website.

Get in touch:

☎ 0800 036 8888

✉ courses@uwl.ac.uk

NMC
Nursing &
Midwifery
Council

hcpc
health & care
professions
council

* subject to validation

For updated information, please check the course page on our website.

Get in touch:

☎ 0800 036 8888

✉ courses@uwl.ac.uk

* subject to validation



MSc Clinical Science (Bioinformatics Genomics) MClInSc Bioinformatics Genomics*

Equip yourself for clinical bioinformatics, genetic counselling, diagnostics, and research in healthcare's evolving landscape.

What you will study

In the MClInSc Bioinformatics Genomics course, you will study genetics, genomics and bioinformatics. Learn to analyse genetic variations, decode genomic data and employ computational techniques, whilst gaining expertise in utilising bioinformatics tools and databases for data interpretation.

Furthermore, you will learn to communicate findings effectively, considering ethical and legal dimensions, as well as exploring functional genomics, genome analysis and clinical bioinformatics practice. Throughout, you will reflect on professional strengths, master genetics and genomics competencies and apply research leadership and professionalism. Graduates emerge skilled in clinical practice, research, innovation and patient-centric care, well-equipped for the dynamic field of bioinformatics genomics.

Where your career will take you

Upon graduation, you will be prepared for a range of impactful roles. From research and diagnostics in healthcare institutions to pioneering innovations in biotechnology and academia, your expertise in genetics, genomics and bioinformatics will shape the future of personalised medicine and healthcare advancement. Successful completion of the MClInSc course leads to registration with the HCPC as Clinical Scientist..

- **Award**
Masters
- **Duration**
MSc full-time 1 year/
MSc part-time 2 years/
MClInSc 3-4 years
- **Start date**
February/September
- **Location**
West London Campus

Entry requirements



Please see page 141

- level 2 English and Maths for apprenticeship.

For updated information, please check the course page on our website.

Get in touch:

☎ 0800 036 8888
✉ courses@uwl.ac.uk

* subject to validation

MSc Clinical Science (Clinical Biochemistry) MClInSc Clinical Biochemistry*

Enhance your career in Clinical Biochemistry, exploring its role in patient care, diagnosis and treatment, whilst gaining expertise in enhancing healthcare practices.

What you will study

You will embark on a comprehensive exploration of clinical biochemistry, developing expertise in analysing cellular morphologies, genetic variations and biochemical anomalies linked to diseases. You will assess diverse methodologies for specimens' analysis, encompassing histopathology, biochemistry, haematology, immunology and genetics.

Additionally, you will study the application of quality assurance methodologies in haematology, genetics, histopathology, immunology, biochemistry and microbiology. Furthermore, the course will equip you to comprehend the synthesis, metabolism and mechanisms of action of hormones, pharmacogenomics, drugs and toxins in health and disease contexts. The capstone project will empower you to critically assess research, practice, leadership and ethics in clinical science.

Where your career will take you

Your diverse skill set will open doors to a range of fulfilling career opportunities in the field of clinical biochemistry. Successful completion of the MClInSc course leads to registration with the HCPC as Clinical Scientist.

- **Award**
Masters
- **Duration**
MSc full-time 1 year/
MSc part-time 2 years/
MClInSc 3-4 years
- **Start date**
February/September
- **Location**
West London Campus

Entry requirements



Please see page 141

- level 2 English and Maths for apprenticeship.

For updated information, please check the course page on our website.

Get in touch:

☎ 0800 036 8888
✉ courses@uwl.ac.uk

* subject to validation



MSc Clinical Science (Clinical Histopathology) MClinSc Clinical Histopathology*

This Clinical Histopathology course equips learners with in-depth knowledge of disease processes, diagnostic skills, ethical considerations and research expertise.

What you will study

In this comprehensive course, you will advance your knowledge and skills in clinical histopathology, exploring disease processes at the cellular level and mastering diagnostic skills to analyse tissue samples accurately.

You will also acquire proficiency in interpreting blood samples for haematological disorders and will evaluate immune system conditions. Additionally, you will comprehend the ethical landscape of data use and learn cutting-edge techniques in genetics and molecular science, whilst developing expertise in non-malignant and malignant dissection, immunohistochemistry and molecular pathology and grasping the foundations of disease diagnosis.

You will also acquire proficiency in research, quality improvement techniques and ethical conduct.

Where your career will take you

This course provides a fulfilling career in clinical histopathology, where your expertise in disease diagnosis, research. Successful completion of the MClinSc course leads to registration with the HCPC as Clinical Scientist.

- **Award**
Masters
- **Duration**
MSc full-time 1 year/
MSc part-time 2 years/
MClinSc 3-4 years/
CPPD Clinical Science Practice
52 weeks
- **Start date**
February/September
- **Location**
West London Campus

Entry requirements



Please see page 141

- level 2 English and Maths for apprenticeship.

For updated information, please check the course page on our website.

Get in touch:

📞 0800 036 8888

✉️ courses@uwl.ac.uk

* subject to validation



MSc Clinical Science (Clinical Informatics) MClinSc Clinical Informatics*

Want to acquire advanced skills in clinical informatics, harnessing technology and data to optimise healthcare delivery, patient outcomes and informatics system management, shaping the future of healthcare?

What you will study

You will explore the dynamic interface of healthcare and technology, acquiring skills to manage healthcare information systems effectively and leveraging advanced informatics for patient data analysis and personalised care.

The curriculum covers electronic health records, data analytics, health information exchange and technology management. You will grasp healthcare data management intricacies, ethical considerations and secure IT solution design. You will also gain hands-on experience, collaborating with multidisciplinary teams to optimise workflows and enhance patient outcomes. You will become prepared to lead in clinical informatics, integrating technology, data and care to transform healthcare systems and streamline processes, improving patient experiences and driving innovation.

Where your career will take you

Doors will be opened to roles including healthcare IT manager, data analyst and informatics consultant. Successful completion of the MClinSc course leads to registration with the HCPC as Clinical Scientist.

- **Award**
Masters
- **Duration**
MSc full-time 1 year/
MSc part-time 2 years/
MClinSc 3-4 years
- **Start date**
February/September
- **Location**
West London Campus

Entry requirements



Please see page 141

- level 2 English and Maths for apprenticeship.

For updated information, please check the course page on our website.

Get in touch:

📞 0800 036 8888

✉️ courses@uwl.ac.uk

* subject to validation



MSc Clinical Science (Clinical Microbiology) MClInSc Clinical Microbiology*

Master infection diagnosis and management, lab techniques, disease prevention and patient care, paving the way for a fulfilling career in healthcare, research and infection control.

What you will study

You will study cellular changes in diseases, diagnostic methodologies and practical lab skills. You will delve into pathogenesis, clinical presentations and treatments of infections, focusing on genitourinary, respiratory, cardiovascular, gastrointestinal and neurological cases.

The curriculum includes infection prevention, control and public health. You will explore multidisciplinary teamwork, ethical considerations and evidence-based practices. A research project will be undertaken, enhancing your diagnostic and management skills while promoting research and innovation in healthcare.

Where your career will take you

Upon graduating, you will be equipped for a career as a healthcare/clinical scientist. Your skills in diagnosing infections, interpreting lab data and ensuring infection control will be valuable in hospitals, research and public health, impacting patient care and diagnostics. Successful completion of the MClInSc course leads to registration with the HCPC as Clinical Scientist..

- **Award**
Masters
- **Duration**
MSc full-time 1 year/
MSc part-time 2 years/
MClInSc 3-4 years
- **Start date**
February/September
- **Location**
West London Campus

Entry requirements



Please see page 141

- level 2 English and Maths for apprenticeship.

For updated information, please check the course page on our website.

Get in touch:

☎ 0800 036 8888

✉ courses@uwl.ac.uk

* subject to validation



MSc Clinical Science (Genomics Counselling) MClInSc Genomics Counselling*

Gain expertise in genetic counselling, combining ethics, research and clinical skills for impactful contributions in healthcare and counselling domains.

What you will study

This course is designed to prepare you for the specialised field of genetics and genomic counselling. It equips learners with the skills and knowledge needed to provide informed, compassionate counselling to individuals and families dealing with genetic conditions and complex genomic information.

The curriculum covers genetics, genomics, ethical considerations, communication techniques and practical counselling skills. Graduates are well-prepared to work as genomics counsellors in various healthcare settings, guiding patients through the challenges of understanding and managing their genetic information. The course emphasises professionalism, research, and the ability to adapt to the evolving landscape of genomics.

Where your career will take you

Upon graduating, you will be equipped for a career in genetic counselling, offering expert guidance to individuals and families. With strong research skills and a focus on ethics, you will excel in healthcare, research and counselling settings, contributing to innovation in genomic healthcare practices. Successful completion of the MClInSc course leads to registration with the HCPC as Clinical Scientist.

- **Award**
Masters
- **Duration**
MSc full-time 1 year/
MSc part-time 2 years/
MClInSc 3-4 years
- **Start date**
February/September
- **Location**
West London Campus

Entry requirements



Please see page 141

- level 2 English and Maths for apprenticeship.

For updated information, please check the course page on our website.

Get in touch:

☎ 0800 036 8888

✉ courses@uwl.ac.uk

* subject to validation



MSc Clinical Science (Haematology and Transfusion Science) MClinSc Haematology and Transfusion Science*

Gain expertise in haematology and transfusion science, mastering advanced techniques and genetics to excel in clinical laboratories and advance patient care.

What you will study

This course will allow you to explore cellular morphology, genetics, pathology and disease-related changes. You will study methodologies for specimen analysis, quality assurance and differentiation techniques in haematology, haemostasis and transfusion science.

You will also learn about bleeding disorders, thrombophilia, haematological malignancy and antenatal testing, whilst gaining skills in data analysis, evidence-based practice and emerging technologies. In addition, you will engage in critical literature analysis, contribute to healthcare teams and conduct research projects whilst adhering to ethical guidelines.

Where your career will take you

Upon graduating, you will be well-prepared for roles within clinical laboratories, hospitals and research fields. Your advanced skills in diagnostics, genetics and evidence-based practice will contribute to improved patient care and medical advancements. Successful completion of the MClinSc course leads to registration with the HCPC as Clinical Scientist.

- **Award**
Masters
- **Duration**
MSc full-time 1 year/
MSc part-time 2 years/
MClinSc 3-4 years
- **Start date**
February/September
- **Location**
West London Campus

Entry requirements



Please see page 141

- level 2 English and Maths for apprenticeship.

For updated information, please check the course page on our website.

Get in touch:

📞 **0800 036 8888**
✉️ **courses@uwl.ac.uk**

* subject to validation



MSc Clinical Science (Immunology) MClinSc Immunology*

Gain expertise to drive patient care, research and innovation, making a significant impact on healthcare and advancing your career in Clinical Science.

What you will study

This course will enable you to study diverse aspects of immunology, including genetic changes, diagnostics and quality assurance. The practical-focused curriculum covers hypersensitivity, autoimmune diseases and immune deficiencies, with an emphasis on evidence-based practices.

You will master diagnostic tests, patient-centred care and emerging technologies. The course also delves into healthcare ethics, governance and personal responsibilities. Upon completion, you will possess the advanced skills and knowledge to excel in the realm of clinical immunology, contributing significantly to patient care.

Where your career will take you

This degree will propel you into a fulfilling clinical immunologist career in advance patient care, research and health equity with precise diagnostics and innovative solutions. Successful completion of the MClinSc course leads to registration with the HCPC as Clinical Scientist.

- **Award**
Masters
- **Duration**
MSc full-time 1 year/
MSc part-time 2 years/
MClinSc 3-4 years
- **Start date**
February/September
- **Location**
West London Campus

Entry requirements



Please see page 141

- level 2 English and Maths for apprenticeship.

For updated information, please check the course page on our website.

Get in touch:

📞 **0800 036 8888**
✉️ **courses@uwl.ac.uk**

* subject to validation



MSc Clinical Science (Pharmaceutical Science) MClInSc Pharmaceutical Science*

Our Clinical Pharmaceutical Science course prepares graduates for influential roles in pharmaceutical research, development and innovation, driving healthcare progress.

What you will study

This course explores pharmaceutical science, encompassing aseptic preparation methods, radiopharmaceutical usage, disease diagnosis via imaging such as PET, and innovative radiopharmaceutical applications. It imparts knowledge of formulation principles, chemical reactions and stability analysis of medicinal products.

You will master analytical techniques for quality control, evaluating medicinal product quality and identifying anomalies. You will become adept in pharmaceutical analysis, gaining insights into ethical and legal considerations in pharmaceutical research, radiopharmacy, production and quality control.

Where your career will take you

This course equips you for a promising career in clinical pharmaceutical science. You will find opportunities in research, quality control, radiopharmacy and production within pharmaceutical companies, healthcare institutions, and regulatory bodies. Successful completion of the MClInSc course leads to registration with the HCPC as Clinical Scientist.

- **Award**
Masters
- **Duration**
MSc full-time 1 year/
MSc part-time 2 years/
MClInSc 3-4 years
- **Start date**
February/September
- **Location**
West London Campus

Entry requirements



Please see page 141

- level 2 English and Maths for apprenticeship.

For updated information, please check the course page on our website.

Get in touch:

- 📞 0800 036 8888
- ✉️ courses@uwl.ac.uk

* subject to validation



MMus Composition

Our MMus Composition course sits at the heart of the London College of Music.

What you will study

This course gives you excellent opportunities to develop your technical abilities in the fields of composition and orchestration, enabling you to strengthen and refine your own artistic voice and expand your musical and dramatic vocabulary.

Studio-based work is offered, as well as an exploration of audio and MIDI programming, which you will be able to implement in your own applied compositions. There is also the opportunity to broaden your scholarly knowledge in subject areas such as score analysis, conducting and interdisciplinary applications.

Our well-known Composers' Workshop programme offers the opportunity to meet, discover and collaborate with some of today's leading composers, musicians and academics.

Where your career will take you

Once you graduate, you could go on to be a sound editor, copyist, arranger, composer, sound designer or music director.

- **Award**
Masters
- **Duration**
Full-time 1 year/
Part-time 2 years
- **Start date**
January/September
- **Location**
West London Campus
Online (distance learning)

Online Study Option

To make our MMus Composition course as accessible as possible, we also offer a distance-learning version of the course which can be studied online.

Entry requirements



Please see page 141

- advanced musical knowledge
- a written statement.



Get in touch:

- 📞 0800 036 8888
- ✉️ courses@uwl.ac.uk



MMus Composition for Film and Television

Our MMus Composition for Film and TV course sits at the heart of the London College of Music.

What you will study

Through an exploration of advanced orchestration, score production, and sophisticated compositional techniques, this course enables you to specialise in applied music composition, whilst providing an insight into 21st-century compositional practices.

Studio-based work is offered, as well as an exploration of audio and MIDI programming. Alongside practical exploration, there is also the opportunity to broaden your scholarly knowledge in subject areas such as score analysis, conducting and interdisciplinary applications.

Our Composers' Workshop programme offers the opportunity to meet, discover and collaborate with some of today's leading composers, musicians and academics.

Where your career will take you

You might follow in the footsteps of graduates who have achieved success working on a diverse range of projects for an impressive list of clients, including the BBC, the National Theatre, Channel 4 and The British Film Institute.

- **Award**
Masters
- **Duration**
Full-time 1 year/
Part-time 2 years
- **Start date**
January/September
- **Location**
West London Campus
Online (distance learning)

Online Study Option

To make our MMus Composition course as accessible as possible, we also offer a distance-learning version of the course which can be studied online.

Entry requirements



Please see page 141

- a written statement.



Get in touch:

📞 0800 036 8888

✉️ courses@uwl.ac.uk



MSc Construction Project Management

This course is designed to provide you with the knowledge and skills you need to succeed in today's globalised and ever-changing construction industry.

What you will study

This course provides a broad, thorough foundation in the fundamentals required for successfully organising and managing construction projects; such as, strong communication skills, comprehensive knowledge of the building process and the ability to problem-solve. It includes study of the latest technology implementation and innovation, such as BIM and 3D printing.

The course will equip you with advanced knowledge and skills in:

- sustainable built environment development
- construction project management
- integrated and interoperable information management in construction projects
- environmentally-friendly design and construction
- sustainable financial and procurement management in construction projects.

Where your career will take you

You will be qualified for a career in a broad range of management careers in the construction industry. You could work for building contractors or suppliers in areas such as project management, commercial management, design management and construction site management.

- **Award**
Masters
- **Duration**
Full-time 1 year/
Extended Masters and Enhanced
Extended Masters 15 months/
Part-time 2 years
- **Start date**
September
- **Location**
West London Campus

Entry requirements



Please see page 141



Get in touch:

📞 0800 036 8888

✉️ courses@uwl.ac.uk

MBA Consultancy for Innovation and Change

Do you feel ready for a new challenge that has the potential to transform your career?

What you will study

This specialist MBA in Consultancy for Innovation and Change consists of four modules. In the first, you will work with your peers on a simulated project, giving you the opportunity to apply newly acquired skills and knowledge in a safe environment.

In the second, it's about applying what you've learned to the real world. You'll be working with your peers on a real-life client project; UWL's academic faculty and roster of experienced consultants will support and guide you through it.

The third gives you the opportunity to work towards becoming an expert on a chosen subject. You will develop an evidence-based, innovative solution that adds value to organisations.

In the fourth, we equip you with the skills required to successfully influence stakeholders and win the hearts and minds of a real-life boardroom, made up of investors and business owners.

Where your career will take you

This course will give you the leadership skills needed to design and implement innovation and change at a strategic level, be this in major corporations, start-ups or SMEs.

- **Award**
Masters
- **Duration**
Full-time 18 months
- **Start date**
September
- **Location**
West London Campus

Entry requirements



Please see page 141

- a minimum of 3+ years of professional work experience.
- In addition, we are looking for applicants with passion, imagination and the ability to follow through on commitments. You will have great interpersonal qualities and be:
- generous, supportive of others, decisive and imaginative
 - capable of engaging with the world in a reflective way and value testing out new ideas
 - a collaborative learner who want to push innovation boundaries with others.



Get in touch:

- 📞 0800 036 8888
- ✉️ courses@uwl.ac.uk

MA Criminology

This dynamic and flexible course allows you to focus on your area of interest, whether that's global crime, terrorism or criminal investigations.

What you will study

You will be encouraged to develop a critical understanding of the key concepts, ideas and theories that underpin contemporary issues and political debates concerning the wider criminological discipline.

You will learn from a dedicated and diverse team of scholars who are internationally renowned experts in their subject. All teaching staff on this course have doctorates or extensive professional experience in the criminology/criminal justice sector.

You will also benefit from joining our wider research community in some of our research centres.

Where your career will take you

You could pursue a career with a variety of organisations, including intelligence services, the Home Office, or policing and police research.

- **Award**
Masters
- **Duration**
Full-time 1 year
- **Start date**
September
- **Location**
West London Campus

Entry requirements



Please see page 141

You can also apply if you have reached a high level in a criminal justice field of work (eg police inspector level or equivalent), or if you are a specialist in a criminal justice related occupation with extensive work experience. All applications are considered individually.



Get in touch:

- 📞 0800 036 8888
- ✉️ courses@uwl.ac.uk



MSc Cyber Security

This course will prepare you for the challenge of keeping IT environments safe and secure in a world where data is constantly under attack.

What you will study

Through this course you will be geared up for a professional career in cyber security. You will gain a practical understanding of issues surrounding the design, analysis and implementation of modern secure IT systems in an industry context.

Along the way you will develop an appreciation of commercial and open source cyber security equipment, software and services based on industry standard technologies. In addition, you will discover how cyber security systems are designed and constructed, and the impact this technology has on organisations.

You will gain the skills you need to work effectively in a business environment and provide a solid basis for cyber security research and development.

Where your career will take you

You will have clear routes into a number of career opportunities, especially in the Information and Communications Technology (ICT) industry and in organisations that are data and knowledge intensive.

- **Award**
Masters
- **Duration**
Full-time 1 year/
Extended Masters and Enhanced
Extended Masters 15 months/
Part-time 2 years
- **Start date**
September
- **Location**
West London Campus

Entry requirements



Please see page 141

We will also consider equivalent professional qualifications or a relevant HND provided you can demonstrate relevant work experience. In this case you will have to complete an interview with your application and some optional modules may not be available without a first degree in computing.



Get in touch:

📞 0800 036 8888

✉️ courses@uwl.ac.uk



MSc/PgDip/PgCert Dementia Studies: Contemporary Approaches to Practice

This is an interdisciplinary course that offers cutting-edge knowledge about dementia and developments in care and service provision.

What you will study

This course is designed for those involved in the delivery of health and social care for people living with dementia. You will learn about theoretical perspectives, research and practice-based evidence underpinning dementia care and service design across health and social care settings. You will have opportunities to explore and create evidence-based solutions for leading positive changes in practice and improving the lives of people with dementia and their families.

CPD courses:

- Dementia Policy and Influences in Practice
- Global Perspectives in Dementia
- Dementia: Culture and Society
- Evidence-based Approaches to Dementia in Health and Social Care
- Research Methods in Dementia
- Leadership and Innovation in Dementia Care.

Where your career will take you

This course will provide you with the skills and specialist knowledge to become an effective leader in dementia care. Alternatively, you could progress to a research or academic role, or continue to a PhD.

- **Award**
Masters/Postgraduate Diploma/
Postgraduate Certificate
- **Duration**
Full-time 1 year/
Part-time up to 4 years
- **Start date**
February/October
- **Location**
West London Campus

Entry requirements



Please see page 141



Get in touch:

📞 0800 036 8888

✉️ courses@uwl.ac.uk



MSc Digital Audio Engineering

Dive into the intersection of audio engineering and cutting-edge tech, mastering digital audio systems with a special focus on AI and machine learning.

What you will study

Unlock the future of audio by merging engineering, computer science, and creative practice. This course goes beyond traditional audio engineering, delving into machine learning and AI to solve complex audio challenges. Our teaching approach combines lectures, hands-on workshops, and case studies to provide a nuanced understanding of both theoretical and practical skills. Coursework features:

- AI-driven audio pattern recognition
- Advanced noise-cancellation algorithms
- Machine learning-based audio plugins
- Virtual and AI-enabled synthesizers
- Real-time audio and MIDI controllers
- Audio neural networks.

Where your career will take you

Embark on an expansive career that goes beyond the studio. Leverage your expertise for roles in audio forensics, AI-driven music production, spatial audio in gaming, or auditory interfaces in autonomous vehicles. An accredited degree from our program opens doors to both conventional and disruptive sectors, from sound design for VR experiences to R&D roles in emerging tech companies.

- **Award**
Masters
- **Duration**
Full-time 1 year/
Extended Masters and Enhanced
Extended Masters 15 months/
Part-time 2 years
- **Start date**
September
- **Location**
West London Campus

Entry requirements



Please see page 141

- the ability to demonstrate a clear interest in digital audio, either from a utilitarian or creative standpoint.

Accredited degree

This degree has been accredited with Partial Chartered Engineering status (Partial CEng) by the Institute of Engineering and Technology under licence from the UK regulator, the Engineering Council.



Get in touch:

- 📞 0800 036 8888
- ✉️ courses@uwl.ac.uk



MSc/PgDip/PgCert Digital Hospitality and Travel Leadership

Global tourism is the seventh fastest-growing industry in the world – would you like to be a part of it?

What you will study

This course focuses on the exploitation of digital transformations to improve business and customer services, key to management positions within the hospitality and travel sectors.

Whilst exploring leadership skills, you will develop a broad and in-depth understanding of the evolving field of travel and hospitality technology, enhancing your ability to analyse business strategy for planning and implementing new technologies for traveller and guest experience.

You will develop plans to overcome the challenges of the integration of digital tools and systems in business culture and processes, as well as techniques for attracting and retaining talent fluent in using digital tools and analytical strategies.

Where your career will take you

You could go on to work as a brand manager, marketing manager, luxury travel adviser, hotel manager, advertising account director, PR consultant or corporate communications consultant.

- **Award**
Masters/Postgraduate Diploma/
Postgraduate Certificate
- **Duration**
MSc full-time 1 year or
part-time 2 years/
PgDip full-time 8 months or
part-time 20 months/
PgCert full-time 1 year or
part-time minimum 8 months
- **Start date**
September
- **Location**
West London Campus

Entry requirements



Please see page 141

In exceptional circumstances, candidates seeking entry onto the programme without non-standard academic qualifications will be considered in accordance with the University's policy for the Recognition of Prior (Experiential) Learning.



Get in touch:

- 📞 0800 036 8888
- ✉️ courses@uwl.ac.uk



MSc Digital Marketing

We will equip you with the knowledge and skills required to become future strategic decision-makers and creative problem-solvers in digital marketing.

What you will study

Through a series of specifically designed, practical hands-on workshops, expert guest speakers, simulations, and industry "live briefs", we provide:

- a modern approach to the teaching of digital concepts, from a broad range of avenues including strategic marketing, leadership, e-commerce, consumer behaviour and social media marketing
- a thorough curriculum aimed at the optimal utilisation of digital tools, to enhance data analysing and research skills, along with providing insights to improve marketing performance
- hands-on practical learning through modern assessments and industry-inspired projects
- the opportunity to develop and further enhance skills like creative problem solving, innovative thinking, and the ability to work independently and as a team to formulate ideas and opinions that drive effective marketing proposals and add value to any global organisation or marketing team
- knowledge of how the digital customer experience is integral to marketing.

Where your career will take you

This course is designed to help you become a confident digital marketer in either a new or existing career.

- **Award**
Masters
- **Duration**
Full-time 12-16 months/
Extended Masters and Enhanced
Extended Masters 15-19 months
- **Start date**
September
- **Location**
West London Campus

Entry requirements



Please see page 141

- OR a Chartered Institute of Marketing (CIM) Professional Diploma.

UWL also considers applications from those who do not have a formal qualification but have extensive marketing experience. In this case, the applicant would be invited to interview and may also be required to undertake a short-written paper in order to assess their suitability for the academic demands of the course.



Get in touch:

📞 0800 036 8888
✉️ courses@uwl.ac.uk



MMus Electronic Music Composition

The London College of Music (LCM) is known in the UK and abroad as a leader in music technology studies and, in particular, popular electronic music composition.

What you will study

In this industry-focused course you will study a broad range of electronic music, from popular electronic dance music styles to art forms such as electroacoustic music.

You will also examine the history and concepts of electronic music, the creation of sound installations and live performances. Certain options allow for further exploration in the theory and practice of sequencing, sound synthesis, sampling, production techniques and the use of Max/MSP.

Our teaching rooms are equipped with ProTools HD systems, Audient mixing consoles and C24 control surfaces.

Where your career will take you

This course helps build a wide range of skills, knowledge and creative strategies essential for a successful career in the contemporary, fast-changing music industry. Once you graduate, you could go on to work as a composer, sound designer or remixer.

- **Award**
Masters
- **Duration**
Full-time 1 year/
Part-time 2 years
- **Start date**
September
- **Location**
West London Campus

Entry requirements



Please see page 141

- advanced musical knowledge (although knowledge of notation and instrumental skills are not required)
- a written statement.



Get in touch:

📞 0800 036 8888
✉️ courses@uwl.ac.uk



MSc Finance and Accounting

If you are a Finance or Business graduate and interested in pursuing a career in accounting and finance, this course would give you the opportunity to gain more specialist knowledge.

What you will study

The MSc Finance suite of courses is designed to equip you with the knowledge and technical skills required to meet the needs and demands of the profession and make a more meaningful contribution to the organisations they work for.

The various pathways will provide you with further opportunities to pursue rewarding careers by exploring areas relevant to your chosen subject specialism.

The MSc Finance and Accounting is an engaging course that will develop your strategic thinking and critical understanding of the main principles of accounting, finance, taxation and auditing, including contemporary issues and developments in the profession.

UWL's suite of finance courses opens a range of opportunities in a multitude of industries across the world, and our graduates are currently employed at banks and financial institutions, management consultancy firms, five-star hotel chains and healthcare organisations.

Where your career will take you

Once you graduate with an MSc Finance and Accounting you will be ready to apply for senior roles in accountancy.

- **Award**
Masters
- **Duration**
Full-time 1 year/
Extended Masters and Enhanced
Extended Masters 15 months
- **Start date**
September
- **Location**
West London Campus

Entry requirements



Please see page 141

MSc Finance and Economics

The MSc Finance and Economics course has been designed to equip you with the knowledge and technical skills required to meet your goals and make a meaningful contribution to the organisations your work for.

What you will study

An MSc Finance and Economics degree will equip you with the economics and financial knowledge and skills required to build a strong career in the business and finance sectors. Through specialist modules such as Quantitative Approaches to Economic Analysis, and Economic Theory, you will be able to address strategic challenges faced by business organisations operating in competitive national and global markets.

If you are a Business or Economics graduate and interested in pursuing a career in economics, this course would give you the opportunity to gain more specialist knowledge. When you study economics at the University of West London, you will have direct contact with our course tutors who have extensive theoretical knowledge and industry experience. Their combined expertise will support your professional development throughout the course.

Where your career will take you

Thanks to our West London location and our longstanding reputation, we have formed strong connections with a number of potential employers.

- **Award**
Masters
- **Duration**
Full-time 1 year/
Extended Masters and Enhanced
Extended Masters 15 months
- **Start date**
September
- **Location**
West London Campus

Entry requirements



Please see page 141



Get in touch:

📞 0800 036 8888

✉️ courses@uwl.ac.uk



Get in touch:

📞 0800 036 8888

✉️ courses@uwl.ac.uk



MSc Finance and Risk Management

The MSc Finance suite of courses is designed to equip you with the knowledge and technical skills required to meet the needs and demands of the profession.

What you will study

The MSc Finance and Risk Management course will provide you with a well-grounded knowledge and understanding of key concepts and principles that support and inform corporate financial and strategic decision-making and is best suited for those interested in investments and portfolio management.

UWL's suite of finance courses opens up a range of opportunities in a multitude of industries across the world, and our graduates are currently employed at banks and financial institutions, management consultancy firms, five-star hotel chains and healthcare organisations.

Where your career will take you

If you are a Finance or Business graduate with strong numerical skills and interested in pursuing a career in investment banking, portfolio management, risk analysis and the like, then this course, which has been created with input from industry professionals, will enable you to acquire the skills and knowledge required by employers in this field.

- **Award**
Masters
- **Duration**
Full-time 1 year/
Extended Masters and Enhanced
Extended Masters 15 months
- **Start date**
September
- **Location**
West London Campus

Entry requirements



Please see page 141

- A level Mathematics (or equivalent).

MSc Finance and Sustainability

This course aims to create highly sought-after “sustainable finance professionals” who are essential in helping organisations across all sectors create long-term value for all stakeholders.

What you will study

This course will cover the interesting overlap between finance and sustainability and show how organisations can endeavour to improve their overall sustainability practises. Some of the topics covered will include:

- management skills for finance professionals
- sustainable strategy
- sustainability frameworks disclosures and analytics
- corporate financial reporting
- corporate financial management
- business statistics and forecasting.

Where your career will take you

Upon completing this course, you can expect to enter an exciting career in positions such as sustainable finance manager, financial services, sustainable finance manager, environmental and social due diligence, sustainable finance manager and senior associate – sustainable finance.

- **Award**
Masters
- **Duration**
Full-time 1 year
- **Start date**
September
- **Location**
West London Campus

Entry requirements



Please see page 141



Get in touch:

📞 0800 036 8888

✉️ courses@uwl.ac.uk



Get in touch:

📞 0800 036 8888

✉️ courses@uwl.ac.uk

* subject to validation



MSc Finance and Technology

This course enables students to become the new generation of fintech strategists in an era of accelerating digital transformation.

What you will study

In this course you will study a range of areas which will prepare you for a career working in finance and technology. For example, you will learn management skills, Big Data analytics, blockchain and decentralised finance, corporate financial reporting, business statistics and forecasting and corporate financial management.

Where your career will take you

You could enter a range of careers after completing this course, for example: finance data analyst, business insights analysts, senior financial planning and analysis manager.

- **Award**
Masters
- **Duration**
Full-time 1 year
- **Start date**
September
- **Location**
West London Campus

Entry requirements



Please see page 141

- A level Mathematics (or equivalent).

MSc Food Business Management

(Internship option available)

The hospitality industry has seen tremendous growth in recent years, showing it to be a sector resilient to economic turbulence.

What you will study

This course takes an innovative approach, encouraging you to make the connections between theory and practice. You will examine topics ranging from management theory and practice to food supply chain management.

The course will help you to approach business challenges from a global perspective and assess situations from financial, commercial, societal and cultural standpoints. We embrace product innovation whilst remaining aware of the ethical and nutritional responsibility of business in modern society.

You will come to understand how to develop action plans based on theoretical frameworks that you will be able to apply throughout your career to manage change effectively.

Where your career will take you

This course will deliver professional development opportunities to senior managers, which can enhance promotion prospects, open up new career opportunities and create greater long-term career security.

- **Award**
Masters
- **Duration**
Full-time 1 year/
Full-time with internship
18 months/
Extended Masters and Enhanced
Extended Masters 15 months/
Part-time 2 years
- **Start date**
September/October
- **Location**
West London Campus

Entry requirements



Please see page 141



Get in touch:

📞 0800 036 8888

✉️ courses@uwl.ac.uk

* subject to validation



Get in touch:

📞 0800 036 8888

✉️ courses@uwl.ac.uk



MA Global Black Studies, Decolonisation and Social Justice

If you are fascinated by the Windrush 75, impassioned by the Black Lives Matter movement or curious about the social justice system, then this course is for you.

What you will study

While many Black history courses focus on African American studies, our inspiring Masters degree looks at Black history, culture and identity in a fully global context.

Through a carefully curated selection of modules and case studies, you will learn about social groups and explore historical issues such as:

- the legacy of African Chattel Enslavement
- the African and Caribbean diaspora
- the rise of indentured workers
- the Windrush generations
- black social activism.

Additionally, the course will engage with a range of positive contributions made by the black diaspora in literature, music, film, theatre and the arts, science, business, grassroots activism and campaigns for social justice.

Where your career will take you

There is a real search for this knowledge at all levels of education, as well as directly benefitting professionals responsible for diversity or delivering an anti-racist curriculum.

- **Award**
Masters
- **Duration**
Full-time 1 year
- **Start date**
September
- **Location**
West London Campus

Entry requirements



Please see page 141

- a minimum of English and Maths at the equivalent of GCSE grade C or above.



Get in touch:

📞 0800 036 8888

✉️ courses@uwl.ac.uk



MSc Health Informatics

The initiative to digitise health and genomics information has created a strong demand for medical informatics professionals.

What you will study

This course will provide you with the broad grounding you need for a range of careers as a health informatics or bioinformatics practitioner in the public and private sectors, within the UK or overseas.

We have designed this degree for graduates with analytical and inquisitive minds who want to work in professional roles that encompass computing and biology, medicine or healthcare.

Your studies will help you to develop the Information Communications Technology (ICT) skills and knowledge required to support and improve health and healthcare delivery.

You will learn about the information systems used to manage healthcare, knowledge and data management and leadership and management competence. Your dissertation that will allow you to focus on an area of particular interest and apply your what you have learnt on the course.

Where your career will take you

This course will prepare you for a wide range of careers within the public and private health sectors. You could work in clinical informatics, personalised medicine, clinical bioinformatics and many more!

- **Award**
Masters
- **Duration**
Full-time 1 year/
Extended Masters and Enhanced
Extended Masters 15 months/
Part-time 2 years
- **Start date**
September
- **Location**
West London Campus

Entry requirements



Please see page 141

We will also consider equivalent professional qualifications or a relevant HND provided you can demonstrate relevant work experience. In this case you will have to complete an interview with your application and some optional modules may not be available without a first degree in computing.



Get in touch:

📞 0800 036 8888

✉️ courses@uwl.ac.uk



MSc Health Psychology

With the Covid-19 pandemic serving as a stark reminder that the choices we make about our health do matter, there is no better time to immerse yourself in this course.

What you will study

This MSc Health Psychology course will give you a complete grounding in the theory, themes, professional issues and practical skills central to Stage 1 Health Psychology training.

It is the first step towards Chartered Psychologist status, as well as registration with the Health and Care Professions Council (HCPC) as a Health Psychologist.

The course covers the core BPS (British Psychological Society) material, including:

- contexts and perspectives in health psychology
- chronic disorders and health interventions
- individual differences in the context of health and illness
- biopsychosocial issues in health psychology
- health inequalities
- ethical, legal and professional practice issues
- research methods.

Where your career will take you

Graduates have gone on to complete Stage 2 Health Psychology training, as well as working as stop-smoking advisers, psychological wellbeing practitioners and university lecturers.

- **Award**
Masters
- **Duration**
Full-time 1 year/
Part-time 2 years
- **Start date**
September
- **Location**
West London Campus

Entry requirements



Please see page 141

You must hold, or be eligible for, the Graduate Basis for Chartered membership (GBC) of the British Psychological Society (BPS) with an upper second or first class award. You may also be advised to apply for GBC if you:

- can demonstrate evidence of practical experience relevant to health psychology
- have attained an additional qualification relevant to health psychology
- can show evidence during your undergraduate degree of particular strengths in health psychology.



Get in touch:

📞 0800 036 8888

✉️ courses@uwl.ac.uk

MA Human Resource Management

Our MA Human Resource Management course supports students to develop innovative ways of examining work and the role HR Professionals play in organisations to meet the needs of employers.

What you will study

This course typically focuses on people management, and it offers students the advanced skills and knowledge for a successful career in people management nationally and internationally.

The teaching methods and assessments are aimed at the application of knowledge within the workplace. You will play an active role in learning by engaging with case studies, simulations, live industry examples and scenarios that call for evaluative analysis and enquiry. Peer/flip learning and action learning sets are also integrated as part of the teaching methods. You will also carry out a consultancy project for a real organisation with a particular HRM challenge that needs a remedy to successfully complete the course.

Where your career will take you

This Masters in human resources is designed to meet the career development needs of human resource (HR) managers, advisers, administrators and experienced line managers who want to transition to become human resource practitioners.

- **Award**
Masters
- **Duration**
Full-time 12 months/
Full-time February cohort
15 months/
Part-time 2 years/
Full-time Extended Masters
15 months/
Enhanced Extended Masters
18 months
- **Start date**
February/September
- **Location**
West London Campus

Entry requirements



Please see page 141

- CIPD level 5 qualifications – with a minimum of 2 years HR or management experience
- if without a degree – a minimum of 5 years HR or management experience.

Graduates without any HR or managerial experience and non-graduates with the above-specified experience will be assessed through a written piece of work and an interview at which they will be assessed on their ability to do the course.



Get in touch:

📞 0800 036 8888

✉️ courses@uwl.ac.uk

PgDip Human Resource Management

This well established course will expose students to wide-ranging contemporary perspectives on key developments in people management and organisational analysis.

What you will study

On this postgraduate diploma course, you will be encouraged to take a critical perspective on current theory and practice in human resource management, analyse complex problems and devise creative solutions to them. You will:

- explore the broader academic context of human resources
- look at issues such as organisational strategies and the internal and external environmental influences on strategy development
- examine the key principles underpinning UK and EU employment law
- develop your people-management skills through exploring various approaches to recruitment management and leadership taken by different organisations
- be encouraged to develop personal skills including the ability to be self-aware and reflect on your strengths and weaknesses; leadership and decision-making abilities
- have the opportunity to improve professional skills including IT and finance.

Where your career will take you

You could work as a consultant, human resources manager, human resources business partner/operations manager and more!

- **Award**
Postgraduate Diploma
- **Duration**
Full-time 18 months
- **Start date**
February/September
- **Location**
West London Campus

Entry requirements



Please see page 141

- CIPD level 5 qualifications – with a minimum of 2 years HR or management experience
- if without a degree – a minimum of 5 years HR or management experience.



Get in touch:

- 📞 0800 036 8888
- ✉️ courses@uwl.ac.uk

MSc Improvement Science

Our MSc in Improvement Science is a work-based learning course designed for experienced healthcare staff, both in the UK and internationally.

What you will study

By developing your knowledge of the latest methodologies in healthcare, our course will provide you with a high level of pragmatic research capability and knowledge applicable to your workplace, so you can help to make a positive impact.

The course champions evidence-based implementation and evidence-based practice. It focuses on understanding care from the perspective of patients and carers, and engaging them in its future design and development. Bringing research more rapidly into everyday practice, different improvement methodologies and rigorous evaluation of clinical and cost-effectiveness will also be covered.

Many NHS Trusts now have improvement in their values and strategic agendas; this course will provide you with a robust understanding of how you can support your Trust and patients to improve care.

Where your career will take you

Upon graduation, you will have the right skillset to deliver improvements in complex healthcare contexts, including in areas under financial constraints.

Having completed a work-based learning project within the degree, you will have first-hand knowledge of how to improve patient care in line with organisational priorities.

- **Award**
Masters
- **Duration**
4 years
- **Start date**
September
- **Location**
West London Campus

Entry requirements



Please see page 141

- be based in a healthcare setting
- be recognised as a competent and capable carer by the organisation you work for.

You should also have an idea of how to improve your healthcare service/setting. If you are unsure whether you meet the entry requirements please contact the course leader who will be able to assist you.



Get in touch:

- 📞 0800 036 8888
- ✉️ courses@uwl.ac.uk



MSc Infection Prevention and Control

This course will help you develop specialist knowledge and become an expert practitioner in the field of infection prevention and control.

What you will study

This course will provide you with the relevant knowledge and skills required to be an IPCP (Infection Prevention and Control Practitioner), which enables you to translate and apply these core principles across different acute and secondary healthcare settings. These are senior and specialist roles that require a high level of cross-disciplinary knowledge on all aspects of the epidemiology, management and prevention of infection, as well as sophisticated communication skills. Initiating and facilitating service improvements to assure patient safety are a key part of the role.

Where your career will take you

Career options may include senior roles within the field of infection prevention and control, or public health. You could also study for a PhD or Professional Doctorate.

- **Award**
Masters
- **Duration**
Part-time 3-4 years
- **Start date**
September
- **Location**
West London Campus

Entry requirements



Please see page 141

- already be working as an Infection Prevention and Control Practitioner (the latter must be at least 50% of your role).

If you do not have a first degree there may be an alternative route to access the course.



Get in touch:

📞 0800 036 8888

✉️ courses@uwl.ac.uk



MSc Information Systems

This course aims to give you a full understanding of how information systems (IS) are designed, constructed and integrated within organisations.

What you will study

This MSc Information Systems will build on the knowledge and skills taught on traditional undergraduate computing courses. Expanding on this foundation, you will learn about the challenges and solutions for introducing IS into enterprises and organisations.

The success of any IS/IT strategy is largely dependent on specialists who recognise diverse business needs and understand how technology can support an organisation to achieve its goals. Your studies will cover system architecture and supporting technologies as well as the effective management and delivery of content and data.

Throughout the course, you will have access to laboratories and dedicated information and communications technology (ICT) suites, as well as specialist networks and software, the University library and digital resources.

Where your career will take you

There is demand among employers for skilled IS and ICT professionals on both the development and service sides. Our graduates have been successful in finding employment in the private, public and voluntary sectors.

- **Award**
Masters
- **Duration**
Full-time 1 year/
Full-time with internship
20 months/
Extended Masters and Enhanced
Extended Masters 15 months/
Part-time 2 years
- **Start date**
September
- **Location**
West London Campus

Entry requirements



Please see page 141

We will also consider equivalent professional qualifications or a relevant HND provided you can demonstrate relevant work experience. In this case you will have to complete an interview with your application and some optional modules may not be available without a first degree in computing. All applications are considered individually.



Get in touch:

📞 0800 036 8888

✉️ courses@uwl.ac.uk



MA Interior Environment Design

This course will give you the creative and professional skills you need to join the design professionals of the future.

What you will study

Our MA Interior Environment Design will encourage you to consider how commercial, social and political factors are influencing form and function to create new prototypes for hybrid interiors and reworking existing spaces with new ideas.

This course will investigate how these factors work together to create temporary and permanent environments in both constructed and virtual spaces.

The course includes problem-based practical workshops and the development of live-consultancy projects with industry partners. You will also have opportunities to collaborate with fellow students from other pathways within our school.

Where your career will take you

You could go on to work across a range of environments, working with architects, engineers and designers, either within a practice or as a freelance consultant. Alternatively, you may go on to develop your own business.

- **Award**
Masters
- **Duration**
Full-time 14 months/
Part-time 2 years
- **Start date**
September
- **Location**
West London Campus

Entry requirements



Please see page 141



Get in touch:

- 📞 0800 036 8888
- ✉️ courses@uwl.ac.uk



LLM International Banking and Finance Law

Would you like to work as a legal expert in the finance sector? This course will give you the skills you need.

What you will study

Your studies will cover both legal and financial areas of expertise, giving you a well-rounded qualification. Your tutors and lecturers have significant practical experience and excellent connections within the industry.

You will cover topics including syndicated loans, bond issuances, derivatives markets and employment law. We will also compare jurisdictions outside of English courts, in the US, Africa, Asia and the Middle East. The course also covers securities regulations, international banking law, international commercial arbitration and mediation law.

Furthermore, you will have access to an on-site courtroom with laptops and video equipment for judges/advocates, which is ideal for student mooting competitions. Our Student Law Society is highly active and will provide valuable networking opportunities, in addition to social events.

Where your career will take you

Graduates will be able to seek employment opportunities with firms specialising in investment, law, consultancy and accounting.

- **Award**
Masters
- **Duration**
Full-time 1 year/
Part-time 2 years
- **Start date**
September
- **Location**
West London Campus

Entry requirements



Please see page 141

If you have at least three years of legal or relevant commercial work experience then you will also be considered, subject to an interview. All applications are considered individually.



Get in touch:

- 📞 0800 036 8888
- ✉️ courses@uwl.ac.uk



LLM International Business and Commercial Law

This International Business and Commercial Law course will introduce you to the theory and practice of international business regulation in a globalised world.

What you will study

Your studies will cover both legal and financial aspects, giving you a well-rounded qualification which will enhance your ability to work as a legal expert in multinational corporations.

The course will focus on international business law from a global perspective. It will identify the important characteristics of doing business in an international environment, the main sources of regulation and key concepts of contract and corporate law.

You will explore business dispute resolution and be introduced to the concepts of corporate social responsibility, in particular doing business in developing countries. The course will also touch on other common law and civil law jurisdictions and give you a critical comparative law approach to international commercial law.

Where your career will take you

Many graduates go on to successful careers with global corporations, multinational law firms and international consultants.

- **Award**
Masters
- **Duration**
Full-time 1 year/
Part-time 2 years
- **Start date**
September
- **Location**
West London Campus

Entry requirements



Please see page 141

If you have at least three years of legal or relevant commercial work experience then you will also be considered, subject to an interview. All applications are considered individually.



Get in touch:

0800 036 8888

courses@uwl.ac.uk



MSc International Business Management

Whether you want to kick-start a brand new career, boost your existing experience or change career direction, this course will provide you with the skills to flourish.

What you will study

The International Business Management course provides you with an understanding and critical awareness of the complexity and interdependence that characterises the national and international institutional, political, and economic environment within which international businesses operate.

Furthermore, it will provide you with an understanding of key issues in leadership in a cross-cultural environment.

The content of the course focuses on international business decisions and the underlying forces driving the process of internationalisation.

Where your career will take you

We have strong links with national and international employers and our graduates find employment in multiple sectors, often in senior positions.

Recent graduates have gone on to work in roles such as operations manager, marketing manager and sales manager.

- **Award**
Masters
- **Duration**
Full-time 1 year/
Extended Masters and Enhanced
Extended Masters 15 months
- **Start date**
September
- **Location**
West London Campus

Entry requirements



Please see page 141



Get in touch:

0800 036 8888

courses@uwl.ac.uk

MA International Fashion Brand Management (three pathways)

This course places strategic fashion brand management at its core and offers a unique combination of fashion branding with subjects that are specific to your chosen pathway.

What you will study

Our exciting MA International Fashion Brand Management suite offers three innovative degree pathways:

- MA International Fashion Brand Management: Buying and Merchandising
- MA International Fashion Brand Management: Fashion AD/PR and Communication
- MA International Fashion Brand Management: Circular Fashion and Sustainability

Each pathway offers a unique combination of fashion branding and pathway specialist topics to equip students with advanced skills and knowledge to succeed in their chosen tracks.

The course adopts the 'Learning by Doing' approach. Students gain invaluable industry experience and connections, whilst building up their analytical thinking, problem-solving and practical skills.

Where your career will take you

Upon graduation you may qualify for a broad range of careers and could work for international fashion brands, or alternatively could choose to study a PhD specialising in an area of fashion branding and/or fashion buying/merchandising/AD/PR and supply chain management.

- Award
Masters
- Duration
Full-time 14 months
- Start date
September
- Location
West London Campus

Entry requirements



Please see page 141



Get in touch:

📞 0800 036 8888

✉️ courses@uwl.ac.uk

LLM International Studies in Intellectual Property Law

Build specialist knowledge of intellectual property law, including copyright, trademark and patent law, and legal questions associated with new technologies.

What you will study

If you are a law graduate, practising lawyer or business professional, then this course has been designed to equip you with the expertise in IP law and technology that international organisations and law firms now look for.

You will study the most important components of international intellectual property law, such as copyright, patents and trademarks, and how these forms of intellectual property are protected in the digital age. You will look at the European and international aspects of patent law, as well as legal questions associated with new technologies, multimedia and cyberspace.

In addition to these specialised topics, you will examine international commercial law and related subjects. This will help to put IP into the context of modern international business relations.

Where your career will take you

Many graduates go on to successful careers with international law firms, multinational corporations, regulatory bodies and international organisations.

- Award
Masters
- Duration
Full-time 1 year/
Part-time 2 years
- Start date
September
- Location
West London Campus

Entry requirements



Please see page 141

If you have at least three years of legal or relevant commercial work experience then you will also be considered, subject to an interview. All applications are considered individually.



Get in touch:

📞 0800 036 8888

✉️ courses@uwl.ac.uk



MA International Tourism and Aviation Management (Internship option available)

Would you like to enhance your career prospects in aviation or international tourism management?

What you will study

This course aims to equip you with the academic and industry-specific skills that will help you find suitable employment within a service-based industry.

You will adopt an interdisciplinary approach to the study of tourism and aviation management. By drawing upon international case study material, you will improve your understanding of the global operations of both the tourism and aviation sectors.

Our blended teaching and learning strategy includes lectures, tutorials, seminars, industry-based briefs, and self-managed personal research. You will be assessed through essays, reports, presentations, case studies, portfolios, audits, in-class tests, project plans, industry-based briefs, business games and workplace simulations.

Where your career will take you

On graduation, you could go on to work in a variety of sectors throughout the world, including airside, portside, in tour operations, attractions management or business travel.

- **Award**
Masters
- **Duration**
Full-time 1 year/
Full-time with internship 18 months/
Extended Masters and Enhanced Extended Masters 15 months/
Part-time 2 years
- **Start date**
September
- **Location**
West London Campus

Entry requirements



Please see page 141



Get in touch:

- **0800 036 8888**
- **courses@uwl.ac.uk**



LLM Legal Practice (LPC)

Are you interested in a career as a solicitor? This course incorporates the Legal Practice Course (LPC), the first stage of a solicitor's professional training.

What you will study

This course will provide you with training and support in order to become an effective trainee solicitor, as well as offering opportunities to apply for legal work experience.

The course starts with a foundation week where workshops will introduce you to the course, as well as to the skills of interviewing and advising, legal writing and drafting, professional conduct and taxation.

Following this, study for stage one of the course runs from September until February, and then study for stage two from March to June, including a Research Methodology module and a 15,000 word dissertation on an area related to legal practice. Upon completion you will have covered all the compulsory professional elements necessary to qualify as a solicitor.

Where your career will take you

Successful completion can lead to employment in a wide range of legal positions, from private practice to areas such as local government, the Crown Prosecution Service or the Government Legal Service, charities and in-house companies.

- **Award**
Masters
- **Duration**
Full-time 1 year
- **Start date**
September
- **Location**
West London Campus

Entry requirements



Please see page 141

Solicitors Regulation Authority (SRA) – Transitional Arrangements

Please note the Legal Practice course is only available to students who are eligible to qualify as a Solicitor through the **Solicitors Regulation Authority (SRA) transitional arrangements**, which cover candidates already on their way to becoming a solicitor before the Solicitors Qualifying Examination (SQE) was introduced in September 2021.

Find out more about your eligibility under the **SRA transitional arrangements**:

<https://www.sra.org.uk/become-solicitor/legal-practice-course-route/transitional-arrangements>

Please visit our website for full entry requirements.



Get in touch:

- **0800 036 8888**
- **courses@uwl.ac.uk**



PgDip Legal Practice Course (LPC)

Are you interested in a career as a solicitor? This course provides the first stage of the professional training you will need.

What you will study

During the course, you will receive training and support to become an effective trainee solicitor. In addition, there are opportunities to apply for legal work experience.

You will start the course with a foundation week early in September. You will be introduced in workshops to the course and the skills of interviewing and advising, legal writing and drafting, professional conduct and taxation.

Following this foundation week, you will start your study for stage one of the course from September until February. From March to June you will study stage two. On successful completion of stages one and two, you will have covered all the compulsory professional elements necessary to qualify as a solicitor and will be awarded the Postgraduate Diploma in Legal Practice.

Where your career will take you

On graduating, you will be qualified to work as a trainee solicitor.

- **Award**
Postgraduate Diploma
- **Duration**
Full-time 1 year
- **Start date**
September
- **Location**
West London Campus

Entry requirements



Please see page 141

Solicitors Regulation Authority (SRA) – Transitional Arrangements

Please note the Legal Practice course is only available to students who are eligible to qualify as a Solicitor through the **Solicitors Regulation Authority (SRA) transitional arrangements**, which cover candidates already on their way to becoming a solicitor before the Solicitors Qualifying Examination (SQE) was introduced in September 2021.

Find out more about your eligibility under the **SRA transitional arrangements**:

<https://www.sra.org.uk/become-solicitor/legal-practice-course-route/transitional-arrangements>

Please visit our website for full entry requirements.



Get in touch:

📞 0800 036 8888

✉️ courses@uwl.ac.uk



LLM Legal Practice (Top-up)

This course will enable you to enhance your qualifications, complementing the compulsory vocational stage of learning required to embark on a law career.

What you will study

This course provides practice-relevant study on aspects of substantive law and legal practice and emphasises developing the research and analytical skills you need to create a piece of self-managed research relevant to law practice. Our research and methodology module is more detailed and provides more teaching hours than similar courses from other providers, and it provides a much needed bridge between most LLM and MPhil/PhD research methods.

Taking place over one semester, the Research Methodology module is delivered through a blend of taught and online lectures, practical case studies and seminars. Assessment is via a 2,000-word research proposal.

The dissertation is an original piece of research into research practice. Although your research must be self-managed, you will be assigned a dissertation supervisor with similar research interests, either from university staff or from within the legal profession.

Where your career will take you

Potential employers include private practice, the Crown Prosecution Service, the Government Legal Service, charities and in-house solicitors.

- **Award**
Masters
- **Duration**
Part-time 1 year
- **Start date**
September
- **Location**
West London Campus

Entry requirements



Please see page 141

Solicitors Regulation Authority (SRA) – Transitional Arrangements

Please note the Legal Practice course is only available to students who are eligible to qualify as a Solicitor through the **Solicitors Regulation Authority (SRA) transitional arrangements**, which cover candidates already on their way to becoming a solicitor before the Solicitors Qualifying Examination (SQE) was introduced in September 2021.

Find out more about your eligibility under the **SRA transitional arrangements**:

<https://www.sra.org.uk/become-solicitor/legal-practice-course-route/transitional-arrangements>

Please visit our website for full entry requirements.



Get in touch:

📞 0800 036 8888

✉️ courses@uwl.ac.uk



MA Luxury Hospitality Management

(Internship option available)

The luxury sector is growing faster than any other – help launch your career in a highly lucrative and competitive market.

What you will study

This course combines a dedicated academic focus with a study of contemporary managerial and strategic issues. You will learn about the business environment in which luxury brands operate, the customer experience and reputation management in the digital world of luxury hospitality management.

You will develop a critical understanding of the operational, financial and cultural imperatives of luxury hospitality and the impact of changes in that environment at national and international levels.

You will also address the opportunities and challenges involved in designing the customer experience, focusing on the strategies that will help your future employer to achieve their goals.

Where your career will take you

You could go on to work as a brand manager, marketing manager, luxury travel adviser, hotel manager, advertising account director, PR consultant or corporate communications consultant.

- **Award**
Masters
- **Duration**
Full-time 1 year/
Full-time with internship 18 months/
Extended Masters and Enhanced Extended Masters 15 months/
Part-time 2 years
- **Start date**
September
- **Location**
West London Campus

Entry requirements



Please see page 141



Get in touch:

0800 036 8888

courses@uwl.ac.uk



MPH Master of Public Health

This course aims to give you the knowledge to help you understand the impact that financial, social and environmental circumstances have on the health of people.

What you will study

This course focuses on key public health disciplines, from healthy public policy, epidemiology, research methods and methodologies, and global public health.

It will develop your skills in critical analysis and synthesis, information and evidence retrieval, leadership, ability to read and absorb information from a wide range of sources, and creativity to tackle public health challenges at global and local levels.

The course content has been developed with professional relevance in mind, and you will learn from highly skilled staff, many of whom conduct advanced research in their specialist areas.

Where your career will take you

Public health knowledge and skills are in demand from a wide range of employers in the UK and internationally. This includes local government, national and international policy makers, the NHS and other healthcare providers, health charities and health non-government organisations (NGOs).

- **Award**
MPH
- **Duration**
Full-time 1 year/
Part-time 2 years
- **Start date**
September
- **Location**
West London Campus

Entry requirements



Please see page 141

- a supporting statement.



Get in touch:

0800 036 8888

courses@uwl.ac.uk



MBA Masters in Business Administration

This MBA degree course has been designed to support your career progression, preparing you to carry out managerial roles successfully or to build your own business.

What you will study

In a vibrant and supportive environment, you will develop professionally by combining your intellectual, analytical, strategic and critical thinking skills with your drive and ambition. This will help you to begin or progress in your chosen business career, or to change career direction.

You will improve your effectiveness as a manager and leader, transforming your prospects for managerial careers as well as developing your entrepreneurial skills.

This industry-focused course has been designed with direct input from employers, large and small, from both public and private sectors. You will gain a broad overview of international management and business issues, with the choice of optional modules and a personal dissertation to suit your career aims.

Where your career will take you

Once you graduate, you could decide to set up your own business, progress to senior management, or start over in a fresh sector that interests you. Many of our postgraduates now successfully run their own business.

- **Award**
Masters
- **Duration**
Full-time 1 year/
Extended Masters and Enhanced
Extended Masters 15 months
- **Start date**
September
- **Location**
West London Campus

Entry requirements



Please see page 141

MSc Mathematics and Statistics

This course provides a unique opportunity for you to develop specialist skills to launch a career in a rapidly evolving job market with high demand of data and numeracy experts.

What you will study

You will gain strong skills in topics such as machine learning, mathematical and stochastic modelling and symmetry techniques. Taught by expert academics in their respective fields, you will develop exceptional analytical and computational skills. In your final semester, you will also be able to undertake a research project under the supervision of our research specialists.

Skills gained from this degree include:

- collecting, analysing and presenting data to support a case
- the understanding and mastering of popular machine learning techniques
- the ability to apply symmetry considerations to find explicit solutions to non-linear problems
- the ability to perform mathematical and statistical modelling to address complex problems
- scientific communication
- interdisciplinarity from collaborating with computer scientists and engineers.

Where your career will take you

Career roles the course may lead to include data scientist, operational analyst, chartered mathematician, chartered statistician and research scientist.

- **Award**
Masters
- **Duration**
Full-time 1 year
- **Start date**
September
- **Location**
West London Campus

Entry requirements



Please see page 141



Get in touch:

📞 0800 036 8888

✉️ courses@uwl.ac.uk



Get in touch:

📞 0800 036 8888

✉️ courses@uwl.ac.uk

MMidwifery (2 years shortened)

This course is for graduate adult nurses who are currently registered with the NMC and would like to gain registration as a midwife.

What you will study

This course has been developed with input from students, service users and our NHS partners to provide you with the academic and professional qualifications you need to be eligible to register with the NMC as a midwife.

Throughout the course, there is a strong emphasis on the physiological process of childbirth, and you will gain a sound understanding of the role of the midwife and the foundations of midwifery care. As you progress, you will develop and apply your knowledge to a variety of contexts.

The NMC requires you to complete a minimum of 1500 hours of practice experience over two years to be eligible to register as a midwife. At UWL, students have 22 planned practice placement weeks each year to meet this requirement; you will be fully supported whilst on placement.

Where your career will take you

This course will prepare you to apply for registration with the Nursing and Midwifery Council (NMC). Most graduates go on to work with the NHS Trust where they undertook their placement. As a qualified midwife, you could work within the community, in a hospital, or as part of a continuity of care team.

- **Award**
MMidwifery
- **Duration**
2 years
- **Start date**
April
- **Location**
West London Campus/
Berkshire Institute for Health

Entry requirements



Please see page 141

- current registration as an Adult Nurse on the NMC professional register
- GCSEs Mathematics and English Grade 9 – 4 (A* – C) OR equivalent ie Functional Skills Mathematics and English Level 2
- experience working as an adult nurse
- a satisfactory reference.



Get in touch:

☎ 0800 036 8888
✉ courses@uwl.ac.uk



NMC Nursing & Midwifery Council

MMidwifery (3 years pre-registration)

This course has been developed for the next generation of midwives, providing the knowledge, skills and values to deliver world-class, evidence-based care.

What you will study

This course will provide you with the skills to become a midwife who can practise in a variety of settings and provide safe and effective care across the maternity continuum. You will learn through a combination of classroom, online and simulation-based activities, and will gain hands-on experience in clinical placements in a variety of NHS Trust maternity units.

Throughout the course, there is a strong emphasis on childbirth as a normal physiological process, and you will gain a sound understanding of the role of the midwife and the foundations of midwifery care.

At the end of the course, you will be awarded a Masters in Midwifery and will be eligible to register with the Nursing and Midwifery Council as a midwife.

Where your career will take you

This course will prepare you to apply for registration with the Nursing and Midwifery Council (NMC). Most of our graduates go on to work with the NHS Trust where they undertook their placement. As a qualified midwife, you could work within the community, in a hospital, or as part of a continuity of care team.

- **Award**
MMidwifery
- **Duration**
3 years
- **Start date**
April/September
- **Location**
West London Campus/
Berkshire Institute for Health

Entry requirements



Please see page 141

- 5 GCSEs including Mathematics, English and a Science at Grade 9-4 (A*-C) OR equivalent i.e. Functional Skills Mathematics and English Level 2
- a satisfactory reference.

Candidates with a Level-3 Science-based Access to Higher Education Diploma require Mathematics and English GCSE Grade 9-4 (A-C) OR equivalent i.e. Functional Skills Mathematics and English Level 2.



Get in touch:

☎ 0800 036 8888
✉ courses@uwl.ac.uk



NMC Nursing & Midwifery Council



MA Music and Performing Arts Education

This course aims to develop your performance teaching, leadership, and research skills across a variety of global music and performing arts educational contexts.

What you will study

This degree will help you develop vital skills to hone your professional education-based career, complementing your existing performance abilities.

To contextualise these skills within the 21st century, current research-informed practice, and practice-as-research, you will benefit from the vibrant learning environment of the UWL's London College of Music, who you will have the opportunity to closely collaborate with.

You will also develop your teaching and communication skills for a wide variety of age groups and educational settings, whilst engaging with both established and newer theories in music and performing arts education.

Where your career will take you

You will be prepared for leadership careers in areas including youth or community music/theatre groups and schools, instrumental/vocal/acting/movement performance teaching and institution-based arts education and outreach ventures.

- **Award**
Masters
- **Duration**
Full-time 1 year/
Part-time 2 years
- **Start date**
September
- **Location**
West London Campus

Entry requirements



Please see page 141



Get in touch:

📞 0800 036 8888

✉️ courses@uwl.ac.uk



MA Music Industry Management and Artist Development

A sustained career within the music industry increasingly depends on having the skills and ability to manage and develop career opportunities.

What you will study

You will study key concepts in managing and developing a music career – either for yourself or for an act you represent – and a broad range of entrepreneurial and transferable skills and knowledge to help you develop your own music business or to work within specialist sectors of the music industry. Taught by a team of dedicated industry professionals and academics, you will learn a range of specialist skills including independent music management and business development, career-building strategies, live events management, copyright law, and how to conduct an independent research project. Students will also graduate as a 'foundation' Chartered Manager (fCMgr) accredited by the Chartered Management Institute (CMI).

Where your career will take you

Graduates have gone on to set up their own businesses, as well as working in a range of exciting music industry roles, including artist management, agency and promotion, music publishing and PR, tour management and teaching.

- **Award**
Masters
- **Duration**
Full-time 1 year/
Part-time 2 years
- **Start date**
September
- **Location**
West London Campus

Entry requirements



Please see page 141

- a written statement.

We may also offer you a place based on relevant experience or training, usually from within the work environment. All applications are considered individually.



Get in touch:

📞 0800 036 8888

✉️ courses@uwl.ac.uk



PgDip Nursing (Adult)

Are you ready to make a difference and embark on a rewarding career in nursing? This course has been designed for graduates who would like to become an adult nurse.

What you will study

This course will enable you to develop the knowledge and skills to deliver world-class person-centred, evidence-based care. You'll learn how to empower people to make a difference to their own physical and mental health. You will spend time learning through both theory and practice (including in-hospital and out of hospital). Our simulation centres, incorporating virtual reality and immersive technologies, will help you practice your clinical skills in a safe environment. You will reflect the values expected in contemporary nursing practice (The Code, NMC 2018) and the NHS Constitution.

Where your career will take you

As a successful graduate, you will be eligible to apply to register with the NMC, as an adult nurse. Many of our graduates find work with local NHS Trusts or healthcare organisations. Alternatively, you could continue your studies at UWL. This will help you to enhance your clinical knowledge and skills in a specialist area.

- **Award**
Postgraduate Diploma
- **Duration**
Full-time with placement 2 years
- **Start date**
April/September
- **Location**
West London Campus/
Berkshire Institute for Health

Entry requirements



Please see page 141

- GCSE English and Maths (grade 9 – 4/
A* – C) or Level 2 equivalents.

All offers are subject to satisfactory enhanced Disclosure and Barring Service (DBS) and occupational health checks and a satisfactory reference.

Shortlisted candidates will attend an individual values based interview. Candidates successful at the interview will be required to complete a 6,000 word portfolio (RPL module), pass mark of 40%, at academic level 6 to be offered a place on this course. Guidance will be provided.



Get in touch:

📞 0800 036 8888
✉️ courses@uwl.ac.uk



MSc Nursing (Adult) Blended Learning – Pre-registration

This blended learning course has been designed for self-motivated applicants with an undergraduate degree and healthcare experience, who are looking for a two-year flexible route of study.

What you will study

This course combines the convenience and flexibility of online learning for the theoretical elements with on-campus practical experience in our state-of-the-art simulation centres and a wide range of community/primary care focused placements. Do you aspire to work in the community/primary care as a registered nurse on graduation, enabling patients to receive care closer to home? Let us know at the interview stage and we will ensure there is a community/primary care focus in your placement allocation.

UWL is proud to be one of only three universities, selected by NHS England, to offer this blended learning course.

Where your career will take you

Upon graduation, you will be eligible to register as an adult nurse with the Nursing and Midwifery Council (NMC) and will be prepared to care for adults of all ages (18+) who are recovering from an accident or acute illness, living with a chronic health condition or at the end of their lives. Many graduates find work with local NHS Trusts or healthcare organisations.

- **Award**
Masters
- **Duration**
Full-time blended learning with placement 2 years
- **Start date**
April/September
- **Location**
West London Campus/
Berkshire Institute for Health

Entry requirements



Please see page 141

- completed a 2-week online non-credited cultural competence programme
- GCSE English and Maths (grade 9 – 4/
A* – C) or Level 2 equivalents
- Recognition of Prior Learning (RPL) – 1,000 hours (500hrs theory and 500hrs practice); approximately 4 months formal healthcare experience signed off by a registrant.

All offers are subject to satisfactory enhanced Disclosure and Barring Service (DBS) and occupational health checks and a satisfactory reference.



Get in touch:

📞 0800 036 8888
✉️ courses@uwl.ac.uk





MSc Nursing (Adult) On Campus – Pre-registration

This course is designed for both home and international applicants who already have an undergraduate degree and healthcare experience, who wish to study on campus.

What you will study

This course will prepare you to care for adults of all ages (aged 18+), who are recovering from an accident or acute illness, living with a chronic health condition or at the end of their lives.

You will spend time learning in both theory and practice (including in-hospital and out of hospital). Our simulation centres, incorporating virtual reality and immersive technologies, will help you practice your clinical skills in a safe environment. You will reflect the values expected in contemporary nursing practice (The Code, NMC 2018) and the NHS Constitution.

Where your career will take you

As a successful graduate, you will be eligible to apply to register with the NMC, as an adult nurse. Many of our graduates find work with local NHS Trusts or healthcare organisations. Alternatively, you could continue your studies at UWL. This will help you to enhance your clinical knowledge and skills in a specialist area.

- **Award**
Masters
- **Duration**
Full-time with placement 2 years
- **Start date**
September
- **Location**
West London Campus

Entry requirements



Please see page 141

- completed a 2-week online non-credited cultural competence programme
- GCSE English and Maths (grade 9 – 4/ A* – C) or Level 2 equivalents
- Recognition of Prior Learning (RPL) – 1,000 hours (500hrs theory and 500hrs practice); approximately 4 months formal healthcare experience signed off by a registrant.

All offers are subject to satisfactory enhanced Disclosure and Barring Service (DBS) and occupational health checks and a satisfactory reference.



Get in touch:

- ☎ 0800 036 8888
- ✉ courses@uwl.ac.uk



PgDip Nursing (Learning Disabilities)

This course has been designed for graduates (in any subject) who would like to become a learning disabilities nurse.

What you will study

This course will prepare you to positively contribute to the health and wellbeing of people with learning disabilities. You will learn how to assess the often complex social and healthcare needs and support the delivery of robust, evidence-based care plans. You will spend time learning through both theory and practice (including in-hospital and out of hospital). Our simulation centres, incorporating virtual reality and immersive technologies, will help you practice your clinical skills in a safe environment. You will reflect the values expected in contemporary nursing practice (The Code, NMC2018) and the NHS Constitution.

Where your career will take you

As a successful graduate, you will be eligible to apply to register with the NMC as a learning disabilities nurse. Many graduates find work with local NHS Trusts or healthcare organisations. Alternatively, you could continue your studies, helping enhance your clinical knowledge and skills in a specialist area.

- **Award**
Postgraduate Diploma
- **Duration**
Full-time with placement 2 years
- **Start date**
September
- **Location**
West London Campus/
Berkshire Institute for Health

Entry requirements



Please see page 141

- GCSE English and Maths (grade 9 – 4/ A* – C) or Level 2 equivalents.

You will be asked to provide a satisfactory reference along with your application form.

All offers are subject to a satisfactory enhanced Disclosure and Barring Service (DBS) and occupational health checks and a satisfactory reference.

Shortlisted candidates will attend an individual values-based interview. Candidates successful at the interview will be required to complete a 6,000 word portfolio (RPL module), pass mark of 40%, at academic level 6 to be offered a place on this course. Guidance will be provided.



Get in touch:

- ☎ 0800 036 8888
- ✉ courses@uwl.ac.uk





MSc Nursing (Learning Disabilities) Blended Learning – Pre-registration

This blended learning course has been designed for self-motivated applicants with an undergraduate degree and healthcare experience, who are looking for a two-year flexible route of study.

What you will study

The innovative approach to delivery means that the majority of the theory element of this course will be delivered online, using a variety of virtual blended learning strategies.

Practice placements will take place in a clinical environment, with NHS and private, voluntary and independent partners supported by practice-oriented simulation activities.

This flexible delivery model enables you to balance your studies more easily with other personal commitments. The aim of the course is to equip you with the clinical skills and evidence-based knowledge you need to face the challenges of modern learning disabilities nursing.

Where your career will take you

As a successful graduate, you will be eligible to apply to register with the NMC as a learning disabilities nurse. Many graduates find work with local NHS Trusts or healthcare organisations. Alternatively, you could continue your studies, helping enhance your clinical knowledge and skills in a specialist area.

- **Award**
Masters
- **Duration**
Full-time blended learning with placement 2 years
- **Start date**
September
- **Location**
West London Campus/
Berkshire Institute for Health

Entry requirements



Please see page 141

- completed a 2-week online non-credited cultural competence programme
- GCSE English and Maths (grade 9 – 4/ A* – C) or Level 2 equivalents
- Recognition of Prior Learning (RPL) – 1,000 hours (500hrs theory and 500hrs practice); approximately 4 months formal healthcare experience signed off by a registrant.



Get in touch:

📞 0800 036 8888
✉️ courses@uwl.ac.uk



PgDip Nursing (Mental Health)

Are you ready to make a difference and embark on a rewarding career in nursing? This course has been designed for graduates who would like to become a mental health nurse.

What you will study

This course will prepare you to support people with a wide range of mental health conditions. You will learn how to assess, plan, promote and support a person's recovery, facilitating their involvement and enhancing their level of control. You will spend time learning through both theory and practice (including in-hospital and out of hospital). Our simulation centres, incorporating virtual reality and immersive technologies, will help you practice your clinical skills in a safe environment. You will reflect the values expected in contemporary nursing practise (The Code, NMC2018) and the NHS Constitution.

Where your career will take you

As a successful graduate, you will be eligible to apply to register with the Nursing and Midwifery Council (NMC) as a mental health nurse. Many graduates find work with local NHS Trusts or healthcare organisations. Alternatively, you could continue your studies, helping enhance your clinical knowledge and skills in a specialist area.

- **Award**
Postgraduate Diploma
- **Duration**
Full-time with placement 2 years
- **Start date**
September
- **Location**
West London Campus/
Berkshire Institute for Health

Entry requirements



Please see page 141

- GCSE English and Maths (grade 9 – 4/ A* – C) or Level 2 equivalents.

All offers are subject to satisfactory enhanced Disclosure and Barring Service (DBS) and occupational health checks and a satisfactory reference.

Shortlisted candidates will attend an individual values based interview. Candidates successful at the interview will be required to complete a 6,000 word portfolio (RPL module), pass mark of 40%, at academic level 6 to be offered a place on this course. Guidance will be provided.



Get in touch:

📞 0800 036 8888
✉️ courses@uwl.ac.uk



MSc Nursing (Top-up)

If you have completed a pre-registration PgDip in Nursing (Adult/Mental Health/Learning Disabilities) at the University of West London, this course will allow you to top-up your award to a Masters degree.

What you will study

This is a part-time course, allowing you to study while you work. The course will encourage you to refine your knowledge and skills in healthcare and nursing, including:

- independence and self-direction
- systematic and critical approaches to evaluating evidence
- an understanding of research methodological approaches
- ability to communicate with specialist and non-specialist audiences.

The modules have been designed to have a positive and evidence-based impact on your clinical practice. Following the first module, where you explore the principles and process of undertaking a systematic review, you will progress onto undertaking an actual rapid review on a topic that relates to your area of practice.

Where your career will take you

This course will develop your ability to critically analyse and synthesise clinical evidence, as well as working and thinking independently, via the process of undertaking rapid review. These are qualities that are highly sought-after in the workplace and valued by employers.

- **Award**
Masters/Postgraduate Diploma
- **Duration**
Part-time 1-2 years
- **Start date**
September
- **Location**
West London Campus/
Berkshire Institute for Health

Entry requirements



Please see page 141

- have a PgDip Nursing (pre-registration) from the University of West London
- be registered with the Nursing and Midwifery Council (NMC)
- currently work in clinical practice in the UK.

You may be invited to an interview as a part of your application.

MSc Nutrition, Health and Wellbeing

This course will equip you with the knowledge, understanding and practical skills relating to public nutrition, health and wellbeing.

What you will study

You will learn about current public nutrition endeavours, including the pandemic status of type 2 diabetes, noncommunicable diseases and other globally recognisable conditions. This will be achieved through learning about epidemiology, cultural appropriate diets and quality improvement for health and wellbeing.

You will also develop a comprehensive understanding of the food systems and how they impact the status of public health, whilst gaining the skills to positively influence the public nutrition environment through tested quality improvement methodologies, eating behaviour and health communication skills.

The course will also provide insights into the topic of diet sustainability.

Where your career will take you

This course will deliver professional development opportunities, enhancing your promotion prospects. Past graduates have gone on to work in public health, clinical nutrition, the food industry, academia and research, teaching, sports and exercise nutrition, health/food journalism and as health coaches.

- **Award**
Masters
- **Duration**
Full-time 1 year/
Part-time 2 years
- **Start date**
September
- **Location**
West London Campus

Entry requirements



Please see page 141

In exceptional circumstances, candidates seeking entry onto the programme without non-standard academic qualifications will be considered in accordance with the University's policy for the Recognition of Prior (Experiential) Learning.



Get in touch:

📞 0800 036 8888
✉️ courses@uwl.ac.uk

NMC Nursing &
Midwifery
Council



Get in touch:

📞 0800 036 8888
✉️ courses@uwl.ac.uk



MSc Paramedic Science – Pre-registration

Are you ready for a new challenge and thinking of becoming a paramedic? Our exciting MSc Paramedic Science Masters degree will give you the relevant knowledge, skills and clinical expertise to deliver safe and effective treatment to patients in the pre-hospital and out-of-hospital environment.

What you will study

We partner with the London Ambulance Service NHS trust, the busiest emergency ambulance service in the UK, to deliver this trailblazing course – the first pre-registration Paramedic Science course at Masters level in the UK.

You will be at the front line of urgent, emergency and critical care and will gain the knowledge you need to become a confident and self-sufficient Registered Practitioner, as well as to community refer or discharge a broad range of lower acuity presentations.

Placements will be with both the London Ambulance Service NHS Trust and in several wider health and social care settings.

Approved by The Health and Care Professions Council (HCPC).

Where your career will take you

Successful completion allows you to apply to the Health and Care Professions Council (HCPC) for registration as a qualified paramedic. Once qualified and HCPC registered, you can apply for a job in an NHS Ambulance Trust/in other clinical settings.



Get in touch:

📞 0800 036 8888

✉️ courses@uwl.ac.uk

- **Award**
Masters
- **Duration**
Full-time with placement 2 years
- **Start date**
January
- **Location**
West London Campus

Entry requirements



Please see page 141

You will need an undergraduate degree (2:2 or above) in any of the following:

- a healthcare profession, for example: nursing, midwifery or an allied health profession.
- Biological sciences, with experience of direct patient contact (equivalent to 3 months full-time) in an employed or voluntary role.
- any degree, with at least two-years' experience in a registrant or non-registrant clinical role providing quasi-autonomous urgent and emergency unscheduled care.

You will also need to hold a full manual UK driving license.

Please see full entry requirements online.



MMus Performance (Classical, Jazz, Popular)

Enhance your performance skills to an advanced level whilst acquiring new practical and academic knowledge.

What you will study

We have designed this music degree to reflect your needs as a professional artist. While some modules focus on practice and others on theory and research, you will notice more overlap as your studies progress.

Practical modules will include extensive ensemble work and individual instrumental tuition. Academic modules will include research methods and critical perspectives, which will prepare you to devise and execute a final practice-based research project. You will also take an option module, where you may choose between studio recording, music pedagogy and songwriting.

Where your career will take you

This course will give you a head start in the increasingly competitive employment market. Once you graduate, you could go on to work as a performer, musical director, educator or academic.

- **Award**
Masters
- **Duration**
Full-time 1 year/
Part-time 2 years
- **Start date**
September
- **Location**
West London Campus

Entry requirements



Please see page 141

- an unedited recording of two contrasting pieces of music
- a 1,000 word essay – more details can be found online.



Get in touch:

📞 0800 036 8888

✉️ courses@uwl.ac.uk



MSc Person-Centred Health and Social Care

Are you a graduate or practitioner in the field of health and social care?

What you will study

Suitable for those working in a wide range of professional areas and disciplines, this postgraduate course has been designed to help you respond to the growing need to integrate health and social aspects of care.

As current management approaches give way to a more person-centred approach to care, our course will equip you with the up-to-date knowledge and skills you need to contribute to improving provision in this changing environment.

This innovative postgraduate course is delivered through a series of weekend workshops alongside blended learning.

Where your career will take you

You could go on to progress in your career sector, find work as a researcher or work as an advisor to academic, health or policy-making organisations.

- **Award**
Masters/Postgraduate Diploma/
Postgraduate Certificate
- **Duration**
Full-time 1 year/
part-time 2 years
- **Start date**
September
- **Location**
Online (Distance Learning)

Entry requirements



Please see page 141

We particularly welcome your application if:

- you are a qualified practitioner in a relevant field, such as nursing, midwifery, medicine, social work or psychiatry
- you have extensive experience of primary/secondary healthcare settings.



Get in touch:

📞 0800 036 8888
✉️ courses@uwl.ac.uk



MSc Policing

This course provides you with a transformative learning experience that responds to the changing needs of society.

What you will study

This degree will focus on work within diverse and complex communities, preparing you for community working, valuing diversity, championing inclusion, ensuring equality, safeguarding and following ethical policing practice.

The course offers the flexibility to specialise in one of the following pathways:

- MSc Policing
- MSc Policing (International Policing)
- MSc Policing (Investigating Serious Crime)
- MSc Policing (Leadership and Management)
- MSc Police Leadership and Management – Senior Leaders Apprenticeship

You will develop the skills and capabilities to lead and manage complex operations, teams and organisations in order to achieve effective and ethical policing outcomes. All pathways will challenge you to stretch your strategic and critical thinking and to gain the knowledge, skills and competencies to create innovative and sophisticated responses.

Where your career will take you

Graduates will be well placed to take on specialist or leadership roles in policing, community safety, criminal justice, police education and research into police and society.

- **Award**
Masters
- **Duration**
Full-time 1 year/
Part-time 2 years
- **Start date**
September
- **Location**
West London Campus

Entry requirements



Please see page 141



Get in touch:

📞 0800 036 8888
✉️ courses@uwl.ac.uk



MSc Psychology Conversion

Would you like to fast-track your route to Chartered Psychologist status? This course will help you on that journey.

What you will study

This course is accredited by the BPS and will cover the core content you need to apply for GBC membership as a successful graduate.

As this is a Masters-level psychology conversion course, you will also develop your critical thinking and the skills and knowledge to plan, implement and report psychological research, using a range of statistical, as well as qualitative, research techniques.

This degree will also help you to gain a wide range of transferable skills in:

- analysis
- communication
- statistics
- IT
- independence and team working.

Where your career will take you

Graduates usually move into employment as a research or psychology assistant in PhD study, DClin Psychology or DEd Psychology training.

- **Award**
Masters
- **Duration**
Full-time 1 year/
Part-time 2 years
- **Start date**
September
- **Location**
West London Campus

Entry requirements



Please see page 141

- Maths and English GCSE or Level 2 equivalent.



Get in touch:

- 📞 0800 036 8888
- ✉️ courses@uwl.ac.uk



MA Record Production

Would you like to advance your career in the highly competitive fast-paced music industry?

What you will study

Your studies will incorporate the production of popular recorded music from both a theoretical and practical standpoint. You will deconstruct and analyse the process of record production, enhancing your ability to understand today's music industry.

The course has been designed to combine the technical skills of advanced recording, digital signal processing with 'human skills', such as managing sessions, pre-production, developing your career, communication and performance in the studio.

Where your career will take you

Some of the career paths you could take include working as a sound or post-production engineer, a recording artist, a producer, a composer, a re-mixer, a studio manager or a product developer.

- **Award**
Masters
- **Duration**
Full-time 1 year/
Part-time 2 years
- **Start date**
September
- **Location**
West London Campus

Entry requirements



Please see page 141

- advanced musical knowledge (although knowledge of notation and instrumental skills are not required)
- a written statement.



Get in touch:

- 📞 0800 036 8888
- ✉️ courses@uwl.ac.uk

MSc Software Engineering

With the IT sector expanding rapidly around the world, there has never been a better time to take a software engineering course.

What you will study

This course will introduce you to the latest industry standard technologies and provide the opportunity to specialise in topics ranging from software architecture to implementation techniques, building on necessary skills to tackle modern software systems in an industrial context.

Furthermore, you will become familiar with a broad range of current scholarship work in software engineering and learn how to research and review published work.

This course is led by an academic team with extensive research and professional practice directly in software engineering. You will benefit from the industry experience and current research of supportive tutors, and enjoy access to computer labs, our modern library and a range of digital resources.

Where your career will take you

Some of the roles you could expect to work in include software architect, solution architect or project manager.

- **Award**
Masters
- **Duration**
Full-time 1 year/
Full-time with internship
16 months/
Extended Masters and Enhanced
Extended Masters 15 months/
Part-time 2 years
- **Start date**
September
- **Location**
West London Campus

Entry requirements



Please see page 141

MA Strategic Financial Management

This course is designed to develop a more advanced understanding of the theories and techniques of strategic financial management.

What you will study

This course is aimed at students and professionals working towards the ACCA professional qualification, or those who have already completed this professional qualification. Relevant exemptions would be granted to ACCA affiliates and members in good standing, with the possibility of completing this course in the shortest span of time.

The course would also enable you to develop the specialist skills, behaviours and qualities required by professional accountants in order to successfully meet the future demands of the profession and make a more meaningful contribution to the organisations they work for.

Where your career will take you

A career in accounting and finance comes with millions of opportunities and two globally recognised qualifications to back you up.

- **Award**
Masters
- **Duration**
Full-time 18 months
- **Start date**
September
- **Location**
West London Campus

Entry requirements



Please see page 141

You can apply to this course through any one of the following routes:

- a 2:2 honours degree from an ACCA-accredited undergraduate degree programme that entitles 9 exemptions from the ACCA exams
- ACCA students who have completed ACCA Applied Knowledge and Applied Skills Levels
- ACCA Strategic Professional Level part-qualified students, Affiliates and Members in good standing (who may claim up to 100 credits exemptions subject the University's RPL rules).



Get in touch:

📞 0800 036 8888

✉️ courses@uwl.ac.uk



Get in touch:

📞 0800 036 8888

✉️ courses@uwl.ac.uk



MSc Structural Engineering

Our Structural Engineering course will help you to advance your skills in structural analysis, design and adaptation.

What you will study

This course contains advanced structural modules such as structural adaptation, structural systems analysis, and advanced structural design to enhance your knowledge and understanding of structural engineering within the context of building structures.

Recruitment is anticipated from civil and structural graduates with an interest in analysis and design of structural elements.

You will develop the skill base required for working as a site or design office engineer. The course develops these skills in an integrated manner.

The unique understanding of structural engineering related to building structures will make you highly skilled and sought after by employers.

Where your career will take you

You will develop the skills base required for working as a site or design office engineer. You will also develop the skills required for involvement in new structural buildings and the rehabilitation of existing structures using traditional and advanced methods.

- **Award**
Masters
- **Duration**
Full-time 1 year
- **Start date**
September
- **Location**
West London Campus

Entry requirements



Please see page 141

We may also offer you a place based on a combination of an ordinary degree (eg BSc/BEng in engineering without honours) together with relevant experience from within the work environment. All applications are considered individually.



MA Theatre and Performance Practice

Would you like to develop your theatre performance and practice skills within an innovative and collaborative environment?

What you will study

This course investigates your practice as an actor and a theatre practitioner, allowing you to consider innovative approaches to performing and curating performance events. You will develop your skills and knowledge of theatre languages, including text, music, space, and physicality. You will observe creative processes, acting, and embodiment from varying viewpoints.

You will also investigate the planning involved in studio practice, including the facilitation of workshops and leading rehearsals, and carry these through to curating and creating performance events.

Where your career will take you

You could go on to pursue a career in theatre; you also will have gained a range of transferable skills, including knowledge of a diverse range of theatrical styles, an ability to engage in professional dialogue and an ability to work effectively with others.

- **Award**
Masters
- **Duration**
Full-time 1 year/
Part-time 2 years
- **Start date**
September
- **Location**
West London Campus

Entry requirements



Please see page 141

We look for students who show enthusiasm and a passion for the subject through previous study or professional experience.



Get in touch:

☎ 0800 036 8888

✉ courses@uwl.ac.uk



Get in touch:

☎ 0800 036 8888

✉ courses@uwl.ac.uk

As soon as you start your course you will have access to a range of services and expert advice from our Careers Consultants who will help you identify and articulate your abilities as well as plan and manage your career. This support will continue after your course for as long as we can help you.

Making the most of career opportunities



► For more information, please visit www.uwl.ac.uk/careers or email careers@uwl.ac.uk



Our Careers Service offers:

- Personalised, impartial and confidential advice and guidance on progression on a wide range of careers including job hunting, assessment and selection procedures and professional qualifications.
- Careers workshops on topics such as professional networking, presentation skills, successful application and job search techniques.
- Access to online careers resources including occupational information, practice psychometric tests.
- CV and interview help and job hunting sources.
- E-guidance for those who find it difficult to get to campus.
- Sector-specific employer presentations sharing industry insights and application tips.
- Individual appointments at a time to suit you including evening and Saturday mornings.
- Convenient online system to book appointments, events and apply for jobs.

Our Employment Service offers:

- Information about vacancies with a wide range of regional, national and international employers.
- Direct notification of new part-time and graduate vacancies tailored to your interests and subject areas.
- Employment advice.
- Employer presentations on campus.

Volunteering

Volunteering is the perfect opportunity to develop leadership, management and employability skills whilst having fun.

Our volunteering team can give you weekly updates about relevant opportunities in the local community and on longer term projects.

They will also advise you on choosing an opportunity that could enhance your career options.

By studying with us, you will join our global community of more than 150,000 graduates in over 50 countries.

Connected for life through our Alumni network

Our Alumni Team works to support your lifelong relationship with the University.

As a student you can attend our alumni events to network with, and learn from our alumni.


When you graduate you can enjoy a range of benefits:

- Exclusive online and in-person alumni events and activities.
- Alumni communications: social media updates, e-newsletter.
- Alumni card for access to the campuses and library after graduation.
- Special alumni discounts.

- Professional development workshops, careers fairs, webinars and courses.
- Lifelong careers support.
- Volunteering opportunities.

 UWLAlumniAssoc

 @UWLAlumni

 UWL Alumni Association – Official Group



► For more information, please visit www.alumni.uwl.ac.uk



We are committed to giving you the best university experience possible. So we are constantly updating our research, training and leisure facilities. It is an exceptional university experience, and one that makes you ready for your future career.

Modern facilities

Libraries

As a student at UWL, you automatically belong to our libraries at Ealing and Reading which provide study spaces, computers and space to use your own devices.

The Paul Hamlyn Library at Ealing is open 24/7 during term time to enable you to study around your personal and work schedules. The library is a light open space, spread across three floors with different types of study zones and furniture to suit your needs. Our Reading Campus, the Berkshire Institute for Health, includes a specialist library serving the College of Nursing, Midwifery and Health. Each course has a Librarian who can help you with using the library's search tools so that you can find, evaluate and reference information sources. Additional support can be found within the library buildings as well as through drop-ins at the Brentford site and online via our chat service which operates during staffed hours.

The Brentford site also has a book collection and returns service. The library provides access to print and digital material including books, e-books, journals and databases, music scores and more.

Our online reading list system (UWLReadingLists) supports your studies and saves you time by providing quick links to resources recommended by your lecturer. All library sites are equipped with PCs, printers/ copiers/scanners.

Blast FM Studios

Every official student radio station needs its own broadcasting studio, and Blast FM has one. It is the perfect environment for future broadcasters as the teaching studio is right next door, so you can experience first-hand what a broadcasting career looks and sounds like.

Paragon Annex Studios

Our £1m+ investment in the Paragon Annex Studios makes London College of Music's studio complex one of the biggest in the UK. Combined with facilities at our Ealing campus we have 13 studios, 10 Live Rooms and four teaching studios and two audio Mac Labs and one of Europe's largest Rednet installation utilising the Dante audio network.

Weston Hall

The University's auditorium is a bright, comfortable and inspiring place to learn in. It can seat over 400 people at conferences, lectures, performances and academic events.

Performance Centre – Lawrence Hall

Our modern performance space immerses London College of Music students in the reality of professional performance and features a stage, LED lighting, advanced sound and audio visual systems, and a beautiful Steinway model D concert grand piano.



Paul Hamlyn Library



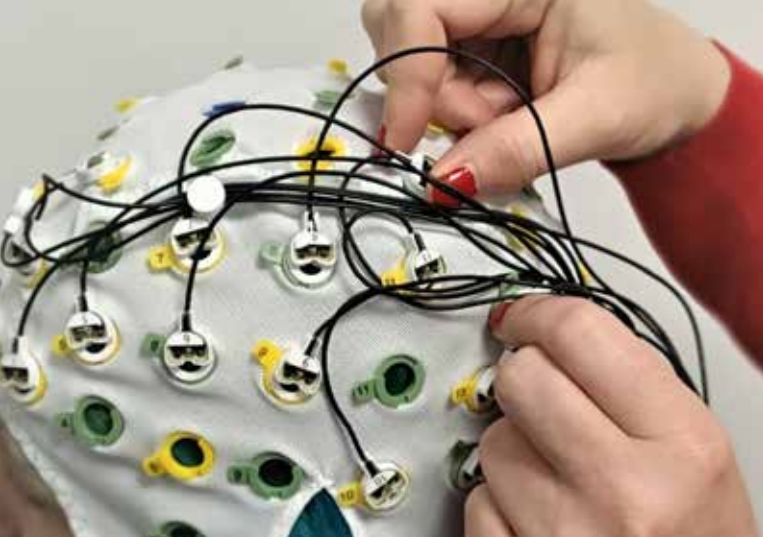
Paragon Annex Studios



Blast FM Studio



Performance Centre – Lawrence Hall



Performance Centre – Vestry Hall

A classical and popular music performance space featuring a Steinway model D concert grand piano, concert-tuned percussion and seating for 60. The hall is connected to two of the studios to allow recording of concerts and performances. The range of specialist equipment available from our fully-stocked media resource centre includes facilities for ambisonic immersive recording.



Simbulance

Simulation Centre for Nursing, Midwifery and Healthcare

Our centres in Brentford and Reading provide outstanding facilities (including virtual reality and immersive rooms) and specialist teachers to help you learn and develop the practical and decision making skills required to work in modern healthcare settings. We also offer a wide variety of CPD courses to support your development to senior clinical roles.

The Richard Wells Research Centre

Our innovative centre is at the forefront of research into patient safety, mental health, midwifery, family health, and learning disabilities. Our nursing, midwifery and healthcare students find it invaluable.

Psychology Research Facilities

Our psychology research facilities include state-of-the-art brain imaging electroencephalogram (EEG), eye tracking equipment, virtual reality technology (Oculus Quest), and a range of experiment and research software. We provide access and a high standard of support for use of these facilities.



The Faringdon Research Centre

Professional-standard facilities

Our industry-specific training facilities are specially designed to prepare you for your chosen career, and are constantly evolving. Today, they include a concrete technology-testing laboratory, an architecture studio, geotechnics and soil engineering laboratories and a hydraulics laboratory.

Our facilities for our creative subjects include printing studios, a dark room, music practice pods, recording studios and performance spaces.

The Faringdon Centre

The Faringdon Research Centre for Non-Destructive Testing and Remote Sensing is the latest development in the School of Computing and Engineering. It has a wide range of sophisticated technologies and equipment, including Ground Penetrating Radar systems (seven different sets of antenna systems from low to very high frequency antenna systems); a light Falling Weight Deflectometer (LFWD); a 3D-Laser Scanner; an IBIS-FS Interferometric Radar System for monitoring structural movements and deflecting vibrations; and many more. The Centre is carrying out several pioneering research projects in collaboration with industry and international partners.

Mock court room

Our impressive mock court room gives students at both the School of Law and Institute of Policing a chance to practice mooting, trial strategy and advocacy. You will have legal training in a realistic, inspiring environment.

The Savoy Suite

This training suite gives future business people a taste of industry, thanks to its board room, presentation theatre and break-out area.

West London Food Innovation Centre

The West London Food Innovation Centre supports start-ups and small to medium-sized food and beverage companies by creating innovative and sustainable products. It offers services ranging from product formulation/reformulation to sensory evaluation and facilitates a scientific approach to new product development for its clients. The Food Innovation Centre supports research into novel experiments and projects that enhances the development of products in the food and beverage sector.

The Marcia Worrell Research Hub

The Marcia Worrell Research Hub is a new focal point for our postgraduate research students providing a dedicated facility for social and learning interaction. It provides a space where postgraduate research students can socialise and network, or study quietly with access to lockers, printing, scanning and photocopying equipment, and tea and coffee making facilities.

Westmont Enterprise Hub

Westmont Enterprise Hub is an “Ideas Space” for students, early stage StartUps, Spinouts from regional businesses and an Incubator. The focus is on finding the Entrepreneur, a pre-market businesses sourced from within the University or from the local community. The Hub provides endless opportunities to ideate, innovate and evolve business solutions using Venture Making, peer mentoring, specialists business advisors and effective networking opportunities through targeted meet-ups, workshops, coaching and the opportunity to discover a Non-Executive Director to lead the early stage startup to investment.

STEM Labs

The new Biomedical Science labs are fitted to an extremely high standard allowing us to deliver our modern, forward-looking curriculum at a practical level, providing laboratory training that will give you the best possible start as a research or clinical scientist. All the equipment in the labs from pipettes to microscope are identical to that used in modern pharmaceutical, nutritional and clinical laboratories. We have updated our two forensic science labs, and we are also investing £1.6m in a new STEM lab which will be opening October 2023.



Our University culture is all about support, diversity and inclusion. We believe that everyone has the ability to excel in their career, and that no one should miss out on expert training.

Life at the University of West London: Support

► For further information
studentservices@uwl.ac.uk
 or telephone
 020 8231 2345



Our culture of support

The UWL community is incredibly diverse: our students and tutors come from all over the world, and bring fresh perspectives, skills and areas of expertise to our vibrant learning environment. Our community is made up of people of all ages, ethnicities, abilities, religions and socioeconomic backgrounds.

Student Services

We want you to get the most out of your time with us, and encourage you to come and talk to us if you are worried about anything.

Student Money and Immigration Advice Team (Funding and money advice)

Confidential and specialist advice is available on student funding, budgeting, money management, welfare benefits and council tax exemption. The team can advise on extra financial assistance from a range of funds, scholarships and bursaries.

Disability Inclusive Practice Award 2021

UWL has been recognised for the individual and institutional efforts to support students with disabilities, by Aim Higher.

International Student Advice

The Student Money and Immigration Advice Team offer advice to our international students. They will help with any questions about visa extension, your immigration status and support whilst studying.

Disability and Mental Health Support

Disability shouldn't be a barrier to learning. That is why we are fully committed to providing students who have learning differences, physical conditions or mental health difficulties with confidential support and specialist guidance.

Our Wellbeing Team can help you with:

- Individual Support Plans (ISP) – implementing reasonable adjustments eg extra time in exams, assistive technology, accessible learning materials, ergonomic chairs etc.
- Help applying for Disabled Students' Allowances (DSA) funding.
- Neurodiversity/Specific Learning Difference screening eg dyslexia, dyspraxia, AD(H)D and autism.
- Diagnostic Assessments.

The support we offer you is flexible and tailored to meet your individual needs. If you have a disability or long term-health condition, contact us so we can discuss your requirements and guide you to any reasonable adjustment you might need.

Student Counselling

A team of dedicated counsellors are available for students who are experiencing difficulties. The Counselling Service is available to discuss any issues that may come up while you are at the University of West London.

The Welfare Team

The Welfare Team are non-judgemental, here to listen and offer a safe and welcoming service to all students who are worried, anxious or in crisis over personal problems. We provide impartial advice, support and information if you are concerned about issues such as relationships, stress, conflict, sexual violence, homelessness or abuse.

The Student Service Teams can link you to specialists who can give guidance on disability support, finance, mental health, homelessness and other personal problems which may be helped through counselling.





Life at the University of West London: Campus

Just next door to the city centre, there are endless ways to explore the capital's art, culture and nightlife from our bustling west London campus in Ealing. The campus itself is surrounded by beautiful parks and green spaces, with plenty of lovely cafés and eateries to enjoy.

A beautiful campus environment

Studying at our Ealing site gives you the best of both worlds: beautiful green spaces on your doorstep, and the hustle and bustle of the city centre just a stone's throw away. Our campuses are all designed to enhance your student experience and provide amazing opportunities to connect with industry leaders in west London and central London.

Study next door to central London

Our west London campus has great transport links to central London, which is bursting with successful businesses, industry leaders and a career-driven culture that you can immerse yourself in.

When you are not busy exploring the city's inspiring business districts, there are plenty of ways to soak up the culture. London is home to some of the UK's best art galleries, fashion exhibitions, museums, sport, music, comedy, theatre, nightclubs, restaurants and shopping.

Our Ealing site

Our modern Ealing site is a safe, comfortable and inspiring place to study. It has a laid-back and friendly atmosphere, with attractive surroundings.

It is also right in the middle of west London's prosperous business hub, and close to many of the employers we work with. You will have lots of chances to gain useful work experience, get first-hand knowledge of your industry and start building the connections you will need from here on in.

Our Brentford site

The Brentford site is home to three of the University's nine academic schools – School of Human and Social Sciences, College of Nursing, Midwifery and Healthcare and The Claude Littner Business School. This site is located close to our Ealing site with a free shuttle bus running between sites and Ealing Broadway.

Reading campus

The Berkshire Institute for Health, situated in Reading is home to our College of Nursing, Midwifery and Healthcare. The campus is 30 minutes from London Paddington by train.

All of our campuses will provide you with the best training and practical opportunities for your career.

Life at the University of West London: Accommodation

We know that accommodation is key to your university experience and you want to love where you live.

The University will support you to find social, supportive, and safe accommodation. We have arrangements with local, purpose-built, student accommodation providers to bring you better rates than direct bookings and give you the added support of our dedicated Accommodation Team.

We offer a range of different accommodation types, varying from twin rooms and shared 3 bedroom flats to ensuite rooms and large studios. Our partner sites are located across Acton, Ealing, and Wembley. These locations all provide good transport links into central London and an easy commute to the University.

If you are studying at the Berkshire Institute for Health in Reading, we have strong links with local student accommodation providers, so you can feel safe in the knowledge that your home has our stamp of approval.

Benefits of renting through UWL

There are many great benefits to renting directly through UWL accommodation.

- Special discounts on direct let prices.
- Free content insurance.
- No deposit.
- No guarantor.
- All utility bills and wi-fi included with rent price.
- Flexible payment plans.

► For further information about accommodation visit www.uwl.ac.uk/accommodation, call 020 8231 2335, email accommodation@uwl.ac.uk or visit us at the Accommodation Support Desk at our Ealing Campus.





Live your best life with the Students' Union

UWL Students' Union ranked
1st in London, 3rd in England
and 3rd in the UK

National Student Survey 2023

Your Students' Union

One of the great benefits of being a student at the University of West London is that you automatically become a member of the Students' Union, voted the number one Students' Union from a Major University in London and number 3 in the UK (NSS 2023). The UWL Students' Union (UWLSU) are here for you throughout your studies and can help ensure you get the most out of your time here.

Representing you and your views throughout your academic experience is one of UWLSU's main roles. As a democratically-led organisation, three students are elected each year by the student body to represent the views of students at a senior leadership level. This means that your voice will be heard, and this voice is truly at the heart of everything that UWLSU does. UWLSU offers great opportunities through its course

rep scheme, student delegate roles and student positions throughout the organisation. These roles provide invaluable skills that can further enhance your academic qualifications and your time at university.

At UWL you will have access to over 10 different sports teams that train at the prestigious Gunnersbury Park and Ealing Trailfinders sporting grounds. There are also great on-campus training facilities like our state-of-the-art UWL Sports Centre which is run by the SU.

The diverse range of societies on offer is the best place to meet like-minded students and build a community. These common interest groups can be your gateway to making some new friends, career networking, extra-curricular activities, and opportunities to gain new skills and experiences.

Another way in which UWLSU supports students is through a free, impartial and confidential advice service. Professional staff members provide students with advice, information, and advocacy on a range of issues they may be facing, with a focus on academic issues.

As well as Freshers Week, UWLSU hosts a bumper events programme throughout the year including Black History Month, LGBTQ+ History Month and Halloween.

uwlsu

UNIVERSITY OF WEST LONDON
STUDENTS' UNION

► Get in touch:

Facebook @westlondonsu
Twitter @uwl_su
Instagram @uwl_su
www.uwlsu.com
020 8231 2276



UWL Sports Centre

UWL's fitness facility is run by the Students' Union and consists of two modern gyms, two large fitness studios and spacious changing facilities.

The Sports Centre includes a large gym and fitness studio which is part of our on-going commitment to promote student wellbeing by having the best facilities available to maintain a healthy, balanced lifestyle.

Student groups will also be able to benefit from preferential booking arrangements at the new Gunnersbury Park Sports Hub that will include two external floodlit artificial grass pitches, natural grass cricket and football pitches, tennis courts, changing rooms, and a gym.

The centre has been funded by a joint partnership between UWL and two local councils.

Through the University's partnership with Trailfinders, student groups will have preferential booking and access to professional-level all-weather rugby pitches, grass pitches, a cricket ground, floodlit tennis courts and small football pitches.





At the University of West London, we welcome students from all over the world.

Welcoming our international students

Before studying with us

Before joining us, you can get all kinds of support and advice from the International Office including how to apply and information about studying at the University.

To find out more, or to contact a member of the International team, visit www.uwl.ac.uk/international

During your studies

Once you have enrolled at the University, our support includes:

- an orientation programme, designed to include help with enrolment and social activities
- advice on finances and opening bank accounts
- information about student organisations across the UK.

You can also get specialist advice and support from our Student Services, including student support, visa assistance and information on finance and accommodation.

To find out more email international@uwl.ac.uk

Studying with us for a shorter period – Study Abroad Programme

If you are already studying at a university in your home country and would like to study in London with us for one or two semesters, you can apply to take part in our Study Abroad Programme.

You will gain experience studying in London whilst also obtaining credits that may count towards your degree at your home institution.

Scholarships and funding

We offer international students the chance to apply for one of our 100 International Ambassador Scholarships worth up to £5,000. These are available for both January and September intakes; for more details visit www.uwl.ac.uk/international/fees-and-funding

US students may also be entitled to US Federal Direct Loans.

For further information about all available scholarships and funding for international students, please visit www.uwl.ac.uk/international

How to apply and entry criteria

Applications for the majority of our postgraduate courses can be made directly to the University. Please use the 'course search' on our website to find your chosen course and then click on 'apply now'.

You will need to apply via UCAS for the following postgraduate courses

- PgDip Nursing (Adult)
- PgDip Nursing (Learning Disabilities)
- PgDip Nursing (Mental Health).

To study with us, you will need to meet our general entry requirements (including English language requirements), as well as any other course-specific criteria.

The minimum entry requirements for postgraduate study:

- Honours degree from any university in the UK or Republic of Ireland.
- Honours degree from an approved higher education institution outside the UK or Republic of Ireland.
- Recognised equivalent professional qualification.
- Industry experience equivalent to qualifications.

English Language Requirements (if your Honours degree was not taught in English)

Taught Masters:

- IELTS 6.5 or above (with no element under 5.5), or equivalent English Language qualification.

For PhD:

- IELTS 6.5 or above (with no element under 6.0), or equivalent English Language qualification.

This requirement may vary across our courses. Please refer to the course pages on our website for further information.

Portfolios

Some courses require a portfolio of your own work to show your creative or technical skills.

Auditions

Performance courses require you to attend an audition.

Interviews

You may need to attend an interview before we make you an offer.

Visiting us

We hold postgraduate open events through the year. Our postgraduate open events showcase all our postgraduate courses and are a great opportunity for you to visit us.

For details and to book a place, visit www.uwl.ac.uk/pgopenday



Fees and finance

Postgraduate Loan

Students who live in England and are eligible can now apply for a postgraduate loan to help with costs associated with postgraduate Masters studies. The loan is a contribution to help with course-related costs such as tuition fees and materials.

Fees

Students have the option to pay in instalments.

UK/EU students:

- 34 % in September 2023
- 33 % in January 2024
- 33 % in April 2024.

International students:

- 50 % upon enrolment
- then three equal installments in November, December and January (Sept start only).

Students must pay their fees in full at enrolment, if they are taking:

- a single module course
- a course lasting less than one academic year
- a course with a fee of £250 or less.

Sponsored students

If your sponsor is paying your fees, you need to supply a copy of an official purchase order form before or at enrolment.

To find out how to pay your fees, please visit www.uwl.ac.uk/fees

You can also refer to our tuition fee policy on our website for more information www.uwl.ac.uk/about-us/policies-and-regulations

Help with funding

Make sure you apply for funding in plenty of time, so it is available from the start of your course.

Since funding is limited, it is important to consider how you will finance your studies before you begin your course.

Options may include:

- Loans.
- Sponsorship from your employer.
- UWL scholarships and research funding.
- Research Council funding.
- External trusts and charities.
- Savings/salary from employment.

For further information about what funding is available please go to: <https://www.gov.uk/funding-for-postgraduate-study>

► For information, please visit www.uwl.ac.uk/funding





If English is not your first language, or if your previous education was in another language, you will need to provide documented evidence of your English language competence.

English language requirements

We accept a variety of English language tests, including International English Language Testing Systems (IELTS). The standard IELTS requirement is 6.5 overall, with a minimum of 5.5 in each element (Reading, Listening, Speaking and Writing). Other English language examinations will be considered at a level comparable to IELTS 6.5.

If you are applying for a PhD or professional doctorate, you must demonstrate your English language proficiency through evidence of IELTS at overall 6.5 (with a minimum of 6.0 in all four skills).

If you are a student based in a country where the school system is taught in English, you may not need to take an additional English language test and we may accept your general qualifications.

For more information on the specific requirements for your country, please contact the International Office at international@uwl.ac.uk

Pre-sessional English Language Courses

If you have not met the English language requirement to study a postgraduate degree course with us, you may be eligible for one of our pre-sessional English language courses. For pre-sessional English courses, please note that international applicants will be required to have a SELT (UKVI academic IELTS) as per UKVI regulations.

If you have any other qualifications not listed on our website, please email the International Office on international@uwl.ac.uk

Entry requirements: Symbol key

All applications are considered individually.



UG Honours degree

These courses require applicants to have an undergraduate honours degree in a relevant subject.



DipHE or HND

Some courses will accept these alternatives to an undergraduate honours degree, in many cases this will need to be supplemented with relevant work experience – all applications are considered on an individual basis.



Work experience

Candidates who do not meet the academic requirements may still qualify for entry through relevant work experience.

For some courses you must be working in the industry as a requirement of entry to the course. Please see individual course pages on our website for details.



Extended Masters

If you have completed an undergraduate degree and not met the entry criteria for your preferred course, you may qualify for our extended Masters option. It includes two additional modules.



Interview/audition

You may be invited to an interview or audition as part of your application process.



Portfolio

Candidates must provide a portfolio of their work showcasing their abilities and past work.



GCSE

You are required to have GCSE English and Mathematics at Grade 4 (Grade C if awarded prior to 2017) or above.

Pre-registration Midwifery applicants must have 5 GCSEs at Grade 4/C or above including Maths, English and a Science subject.



Professional qualification

A professional qualification may be an acceptable alternative to an undergraduate honours degree, or necessary for entry.



Additional or specific entry requirements

Specific requirements apply or additional entry routes are offered. Please check the course page on our website for full details.



Masters degree

Applicants shall normally have a Masters degree or equivalent in the relevant field of study.



Nursing Interview

If you have the qualification for this course you will attend an individual value-based interview online with an academic, clinician and a service user/ carer (where available).



Nursing Portfolio

You will need to complete a portfolio for Evidencing Graduate and Transferable Skills, which is required for entry and be able to evidence 500 hours of formal 'hands on' healthcare experience, signed off by a registrant.



The Pagoda, Royal Botanic Gardens in nearby Kew

Here for the love of West London

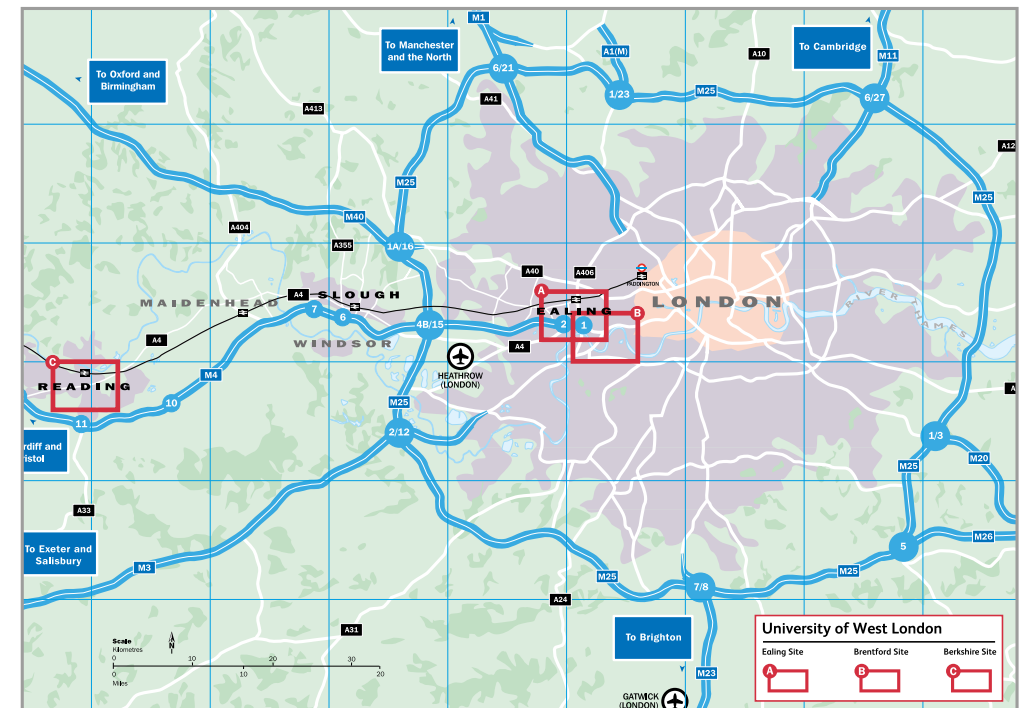


Based in popular west London, we are in the heart of one of the UK's most successful business regions, with a number of global organisations, such as GlaxoSmithKline and Sky, based locally. Both Ealing and Brentford are vibrant and multicultural, combining a cosmopolitan atmosphere with spacious parks and relaxed café culture.

The region is brilliant for transport. Our west London campus is close to both Heathrow Airport and

central London, served by fast rail links and has great local bus services. We run a free shuttle bus between Ealing Broadway and South Ealing stations and our Ealing and Brentford sites.

Our Reading site is walking distance from the main railway and bus stations, next door to car parking and within easy reach of the town's 'park and ride' bus stops. People come from miles around for the shopping and nightlife.





Ealing and Brentford...

Ealing campus

**St Mary's Road, Ealing,
London W5 5RF**

Our Ealing campus is just 30 minutes on the Underground from central London or 10 minutes by fast train to Paddington. It is also 20 minutes from London Heathrow International Airport. Ealing has fast rail links from Reading and London, great local bus services, and it is easy to get to from all London Underground stations.

By bus

The nearest bus routes to the site are the 65, E2, E8, 207, 427, 607, E3 and E9.

By Underground

The closest Underground stations are South Ealing on the Piccadilly Line (10 minute walk) and Ealing Broadway which currently services the Central, District and Elizabeth Lines (15 minute walk). The Elizabeth line has now opened with Reading 48 minutes away, Paddington 10 minutes away and Liverpool Street 24 minutes away once the line fully opens.

By train

Ealing Broadway also has other regular train services to and from London Paddington (10 minutes), Slough (25 minutes) and Reading (50 minutes).

By road

The Ealing site lies on the B455 between the A4 and the A4020, Uxbridge Road. The M4 motorway is a few minutes' drive away from Ealing (Junction 2), and the A40, M40 and M25 are all easily accessible.

Brentford campus

**Boston Manor Road, Brentford,
Middlesex TW8 9GA**

Our Brentford site is 1.5 miles south of the Ealing site. There are great bus and rail services nearby giving quick and easy access to central London. In addition, the free shuttle bus runs to and from both sites, and local tube stations.

By bus

The bus routes closest to the Brentford site are the 65, E2, E8 and H91.

By Underground

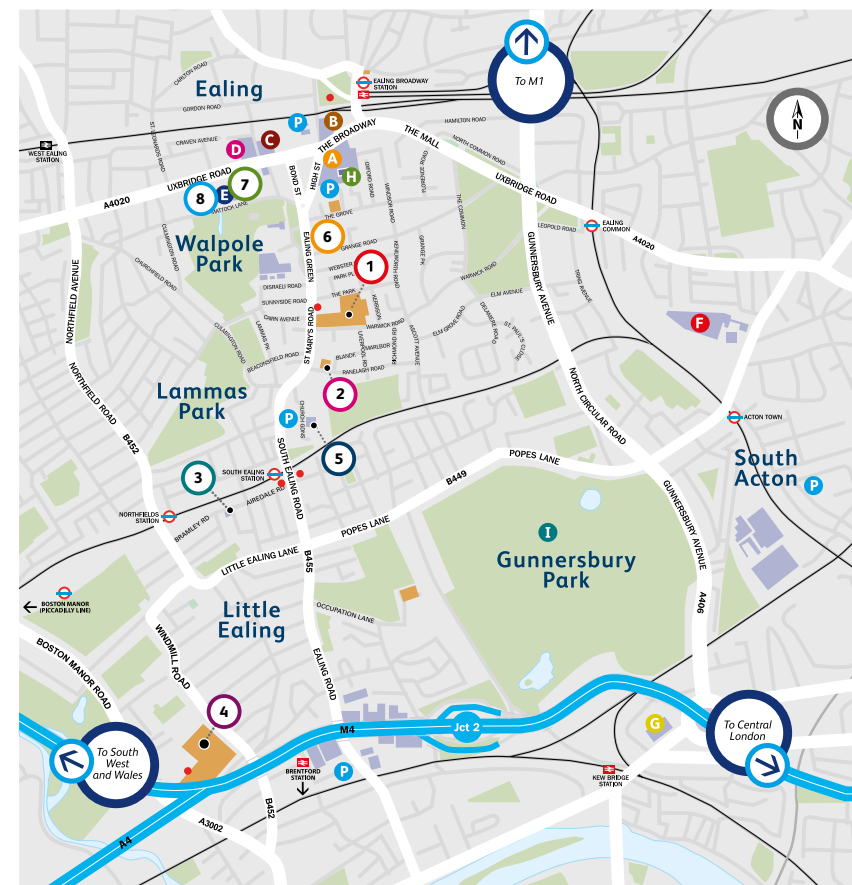
The nearest Underground station is Boston Manor on the Piccadilly Line (15 minute walk).

By train

Brentford mainline train station is a 5 minute walk from the Brentford site with scheduled trains into central London arriving at Waterloo station.

By road

The Brentford site is on the A3002, Boston Manor Road which is just off of the A4, Great West Road.



University Buildings

- | | | |
|---|---|---|
| 1
Ealing Site
<ul style="list-style-type: none"> Academic Office Accommodation Service Administration School of Law London School of Film, Media and Design London College of Music London Geller College of Hospitality and Tourism Paul Hamlyn Library Pillars Restaurant School of Computing and Engineering Student Services Students' Union Academic Administrative Support Centre (located in the Heartspace) UWL Sports Centre | 2
Vestry Hall
<ul style="list-style-type: none"> London College of Music | 5
St. Mary's Church
<ul style="list-style-type: none"> London College of Music performance venue |
| 3
Bramley Road Surgery | 6
Drama Studio London | 7
Cavendish House
<ul style="list-style-type: none"> Institute for Policing Studies |
| 4
Brentford Site
<ul style="list-style-type: none"> The Claude Littner Business School College of Nursing, Midwifery and Healthcare School of Human and Social Sciences Nursing Simulation Centre Academic Administrative Support Centre (located on level 2) | 8
Century House | |

Additional Information

- A** Broadway Shopping Centre
- B** Arcadia Shopping Centre
- C** Ealing Town Hall
- D** Ealing Civic Centre
- E** Questors Theatre
- F** Acton Hospital
- G** Leisure Centre
- H** Library
- I** Gunnersbury Sports Centre
- J** Shuttle Bus Stops
- P** Parking



...and Reading

Reading Campus

Berkshire Institute for Health,
Fountain House,
2 Queens Walk,
Reading RG1 7QF

By bus

The local bus routes include the 15, 16, 17, 19, 20, 20a and 21.

By train

The Berkshire Institute for Health is within walking distance of Reading train station. From here, First Great Western offers good connection to both London and the South. London Paddington to Reading is less than 30 minutes.

By road

The campus is in Reading town centre, just off the A329 ring road, and there's parking nearby at Broad Street Mall. The M4 (Junctions 10 and 11) is just a few minutes' drive away and the M40 and M3 are easy to reach.



Important information (Disclaimer)

This Postgraduate Prospectus is intended as a general guide for prospective postgraduate students.

The University has made every reasonable effort to ensure the information provided in this Postgraduate Prospectus, is accurate at the time of publication. The University however does not represent or warrant that the information provided is accurate, complete, or current.

We recommend that you contact the University to check the current position on courses and services.

The University aims to provide the courses, University services and facilities described in this Postgraduate Prospectus. However, courses, University services and content of publications remain subject to change. Changes to courses and University services may be necessary in order to comply with the requirements of accrediting bodies, to keep courses current through updating best practices or areas of study, to improve the quality of educational services, or in response to student feedback.

Circumstances may also arise outside the reasonable control of the University leading to required changes. Such circumstances include unexpected student numbers or lack of demand, significant staff illness (where a course is reliant upon a person's expertise), unexpected lack of funding, severe weather, natural disaster, epidemic or pandemic, fire, civil disorder, political unrest and government restrictions making a course unsafe to deliver or changes in applicable laws.

After a student has taken up a place with the University, the University will look to give early notification of any changes and try to minimise their impact, offering suitable alternative arrangements where possible.

Coronavirus (COVID-19) pandemic – potential changes to courses

Please note that information regarding teaching, learning and assessment in this Postgraduate Prospectus or on the University website endeavours to be as

accurate as possible. However, in light of the Coronavirus (COVID-19) pandemic, the changeable nature of the situation and any updates in government guidance, the University may need to make changes to the academic courses and the method of delivery. The University will make every effort to keep any necessary changes to a minimum. The University will keep current students and prospective students updated of any changes to their chosen course of study as soon as information becomes available.

Up-to-date information on courses will also be provided with an offer of a place to study where required. The latest key information on courses, entry requirements and fees can be found at www.uwl.ac.uk/students/postgraduate. Please check this website and/or contact the University at courses@uwl.ac.uk before making any decisions to ensure that you have the University's most up-to-date published information.

For full details see the University's Terms and Conditions available here www.uwl.ac.uk/terms

Copyright © University of West London 2023

All rights reserved. No part of this publication may be reproduced, stored in a retrieval system or transmitted in any form or by any means, electronic, mechanical, photocopying, recording or otherwise, without the permission of the University.

Published by
The University of West London

Artwork by
Moox Creative Design

Printed by
A McLays

**University of
West London**
St Mary's Road
Ealing
London W5 5RF

**University of
West London**
Boston Manor Road
Brentford
Middlesex TW8 9GA

**University of
West London**
Fountain House
2 Queens Walk
Reading RG1 7QF

Tel: 0800 036 8888
Int: +44 (0)20 8231 2468

www.uwl.ac.uk



UniWestLondon



uniwestlondon



UniversityWestLondon



University of West London



University of West London

