



UNIVERSITY OF
WEST LONDON
The *Career* University

**[Partner with
the Career
University
2024**



Contents

1. Why UWL?.....	4
2. Partner with a levelling up university.....	6
3. Recruit students and graduates.....	8
4. Degree Apprenticeships.....	14
5. Knowledge Exchange.....	16
6. Enabling industry.....	18
7. Civic engagement.....	30
8. The UWL family.....	34
9. Specialist facilities and venues.....	36
10. Research and study.....	44
11. Ten ways to partner with UWL.....	47

1. Why UWL?

Here at the University of West London (UWL) we are proud to have a reputation that produces talent on a local, national, and international scale. This reputation is not earned through operating in isolation, and we rely on partnering with business to provide students with the best possible platform for their career.

Our diversity in both academic schools and our student body makes clear our commitment to support the modern needs of business and the economy.

Our mission is to be an industry partner of choice, supporting business needs through access to our talented and diverse students, and quality research and enterprise.

This brochure is threaded with what matters most here at UWL – the Graduate Outcomes of our students along with our full range of opportunities where businesses can partner with UWL.

Professor Anthony Woodman
UWL Provost and Senior Deputy Vice-Chancellor

“Our mission is to be a partner of choice, supporting the modern needs of business through access to our services and talented students.”

UWL Provost and Senior Deputy Vice-Chancellor Professor Anthony Woodman

Top 5 for Teaching Quality in
The Times/The Sunday Times Good University Guide 2024

Top 5 for Student Experience in
The Times/The Sunday Times Good University Guide 2024

32nd in The Guardian Good University Guide 2024

Ranked 1st in London*, 3rd in England* and 4th in the UK* National Student Survey 2023

University of the Year for Social Inclusion - Daily Mail University Guide 2024



*Average of all questions, excluding specialists **a modern university is a university established in 1992 or after.



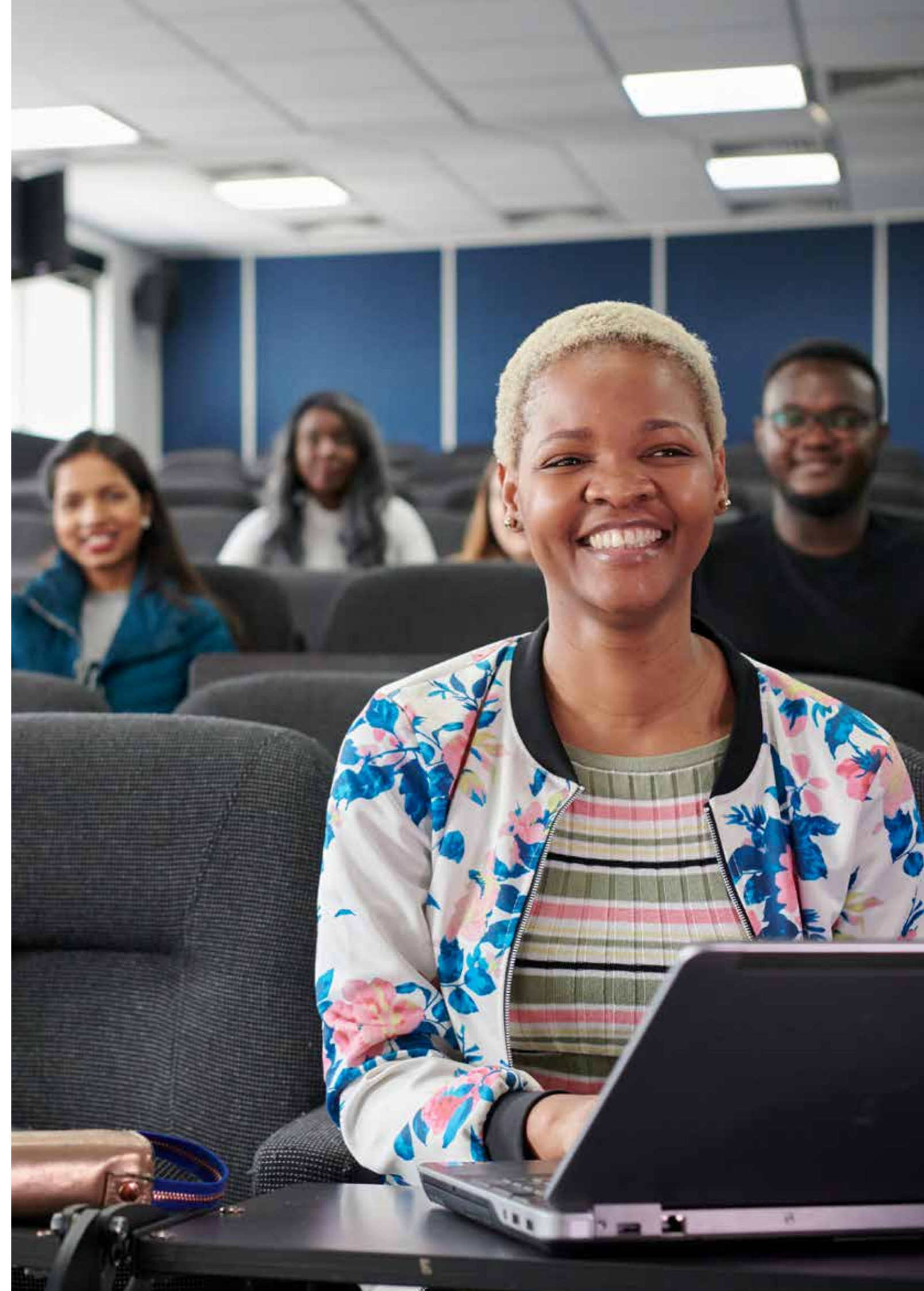
2. Partner with a levelling up university

Modern, progressive and diverse

UWL believes every individual should have the opportunity to meet their potential, irrespective of their background.

49% of UWL students are from Black and Underrepresented Minority Ethnic Groups*	27% Sector average**
59% of UWL students are mature (aged 21 or over) on entry*	29% Sector average**
22% of students at UWL are from Black ethnic backgrounds*	8% Sector average**
54% of UWL Students are Women*	57% Sector average**
63% of students say that neither of their parents entered Higher Education*	46% Sector average**
56% of students are from areas of multiple deprivation (classed as index of multiple deprivation quintiles 1-2)*	40% Sector average**
37% of academic staff are from minority ethnic backgrounds*	20% Sector average**
22% of our professoriate are from minority ethnic backgrounds*	12% Sector average**
10.5% of UWL students have a registered disability*	15.8% Sector average**
8% of our professoriate from Black ethnic backgrounds*	1% Sector average**

Please note that sector data is from 2021/22, UWL data from 2022/23.
Also the mature statistic includes UGFT entrants only.
*UWL Annual Report **Office For Students Statistics



3. Recruit students and graduates



Graduate Talent Bank Agency

- End-to-end recruitment services in early talent
- Access to diverse talent at a modern, progressive university
- Assessment and selection
- Data and knowledge of student and graduate recruitment
- Engagement and onboarding

What do we offer

- Graduate Scheme consultation
- Internship and Placement recruitment advice
- Learning and Development support

No Fees

Our graduate recruitment consultation service is free.

For more information contact:

✉ PES@uwl.ac.uk

☎ 020 8231 2700/2102

Tap into UWL recruitment solutions

Best practice and guidance in meeting your diversity and inclusion recruitment commitments

Developing a recruitment attraction strategy

Access to assessment and selection software and personnel support

Data and knowledge of student and graduate recruitment

We have experience in:

Building end-to-end graduate schemes for international organisations

Delivering and meeting recruitment targets for national early talent recruiters

Designed assessment and attraction strategies for employers

Sharing the latest research on phenomena impacting early talent recruitment



What we offer:

Designated account manager for the recruitment of UWL graduates and interns

Free vacancy advertising service to promote your opportunities to UWL students and graduates

Designated placement officer to recruit students for placements and work experience

Free room hire to interview UWL students and recent graduates

On-campus and virtual careers fairs

Pop-up stands in high footfall areas of campus to promote recruitment

Presentations to promote opportunities and transfer industry knowledge

Adaptable and scalable end-to-end recruitment services for your organisation



Supporting the employability of UWL students

Work experience is embedded in a number of our degree courses enabling students to apply theoretical learning in the work place.

Enabling work experience: placements and internships

Work experience is a fixed period of time a student spends with an organisation. This is validated through an assessed piece of work submitted at the end of their work experience.

Benefits of being a work experience provider:

Reduce cost

A flexible low-cost recruitment solution to your business needs

Reduction on expensive recruitment fees

Bring new ideas and diversity

A fresh and enthusiastic approach to your organisation

Specific skills and knowledge that can benefit your business

Develop your organisation

The chance to secure talented future graduates for your company

The opportunity to devote time to a project which you have not had the resource to do

UWL offers industry specific careers events that are free to attend.

These events offer you a unique opportunity to meet students and recent graduates.

Bespoke part-time and graduate recruitment events

We also welcome you to register for the popular part-time jobs fairs at UWL.

Alternatively, book onto one of the weekly on-campus* and virtual employer insight sessions.

For further details please contact:

pes@uwl.ac.uk ☎ 020 8231 2700/2102

Event sponsorship

Sponsorship is exclusive and each event sponsorship supports employability initiatives such as free 'LinkedIn headshots' for UWL students.

A dedicated university jobs board for students and graduates to access employment opportunities

Our Student Hub platform hosts a jobs board listing 1000's of available roles accessible to all our students and registered graduates.

This is a free jobs listing site and we continually welcome new organisations to register onto our Student Hub platform.

If you wish to promote any active job roles to our students and graduates please register through our link:

www.uwl.ac.uk/studenthub

Types of jobs advertised:

- Part-time jobs
- Internships
- Undergraduate Placements
- UWL Talent Bank Jobs
- Graduate Roles

For more information contact:

PES@uwl.ac.uk ☎ 020 8231 2700/2102

The vast majority of these events are free of charge. All fee-paying services are priced lower than our regional competitors.

"We aim to produce the sorts of graduates, research and enterprise that will enhance the local, regional, national and international communities we serve."

Professor Peter John CBE
Vice-Chancellor and President

*Subject to availability

West London Graduate Internship Programme

If you are a small business, enterprise, or start-up in the West London region, you may be eligible for the UWL Graduate Internship Programme.

This programme offers funding for a six month internship with our talented UWL graduates to support the growth of your business. Internships run from July – December 2024.

The Graduate Internship Programme is a great opportunity to bring fresh talent into your organisation. Employer bids will open in early 2024.

Six-month, full-time (35 hour per week) graduate internships for the fixed period of 24 weeks from Monday 1 July – Friday 13 December 2024.

- Full and partial funding available through the University of West London.
- Salary for graduate internships will be London Living Wage.
- End-to-end recruitment support by the UWL Employment Service team.

Small business /enterprise and start-up eligibility

- Small business /enterprise within West London region (London boroughs of Brent, Harrow, Ealing, Hammersmith and Fulham, Hillingdon, Hounslow, and Richmond upon Thames).
- A turnover of less than £10 million, gross assets of less than £10 million.
- Fewer than 50 employees.
- Public and employer liability insurance.
- Organisations must have office space to host a graduate intern.
- Availability to interview May – June and recruit for the internship period.

For more information and to register your interest visit:

 [uwl.ac.uk/egis](https://www.uwl.ac.uk/egis)

 gi@uwl.ac.uk



4. Degree Apprenticeships



Higher and degree apprenticeships can be a highly effective way to upskill and retain existing staff or to attract new talent to the organisation.

Funding for Higher and Degree Apprenticeships

Did you know...?

- **For levy-paying employers:** the cost of the course is fully covered by the apprenticeship levy.
- **For non-levy paying employers:** up to 95 % of the training is co-funded by the government subject to funding band maximums.
- **Sharing the levy:** If you are a levy-paying organisation you can transfer up to 25 % of the annual value of your levy funds to a non-levy paying company- good to share with your supply chain or a non-for-profit organisation.

Make the most of government funding:

<p>If you are a levy-paying organisation, you can use the funds in your account to pay for apprenticeship training and assessment (up to a funding maximum).</p>	<p>If you are a non-levy-paying organisation, you can share the cost of apprenticeship training with the government.</p>
---	---

<p>“Employers tell us they are crying out for higher level technical skills and that degree apprenticeships are great for their organisations” - Jennifer Coupland, Chief executive for the IfATE”</p>	<p>Support employees to develop skills and knowledge directly relevant to their jobs.</p>
--	---



Some of the organisations we are proud to work with include:



If you are interested in higher or degree apprenticeships at the University of West London, please email:

✉ Janet.Rowson@uwl.ac.uk

5. Knowledge Exchange

Knowledge Exchange (KE) is considered by the UK Government to be the third core mission of universities – alongside teaching and research. KE is about the impact of UWL activities on the world outside academia.

It is a two-way interaction with meaningful transfer and tangible effect. This term covers a broad range of interactions between Higher Education Providers (HEPs) and the economy and society, in which HEPs put their considerable knowledge, expertise and assets to use by engaging with businesses, public services, the third sector and communities.

Knowledge Transfer Partnerships (KTP): Funding to grow your business

A KTP is a dynamic partnership between a business, a university academic team and graduate or post graduate.

KTPs have been running for over 47 years and enabled 14,000+ businesses to drive innovation and growth. At the University of West London we offer a dedicated team to support each stage of your project, from applying for funding, to project planning and evaluation. A KTP allows you to unlock and enhance the company's growth at a subsidised rate, gives you a culture of autonomy can provide your business with many advantage and increase annual profits and market share via innovative products and processes.

For case studies and more information on funding available visit:

uwl.ac.uk/business/access-our-expertise/knowledge-transfer-partnerships

Knowledge and Technology Transfer

By sharing our research and technology, and drawing on our close research partnerships with businesses and industry, we find answers to problems to improve our lives.

uwl.ac.uk/business-services



Supporting a circular, zero waste approach to bio-resource management.



Creating a Portable Music Technology prototype. From Seed Fund to Market.

From improving hydration for older people to saving ancient trees, our research is being used to make a difference to people's lives. Almost 80 percent of our research is rated as world-leading (4*) or internationally excellent (3*) in the latest Government Research Excellence Framework (REF) assessment.

UWL is ranked in the top 100 universities in the UK for the overall quality of our research. We frequently commercialise our intellectual property (IP) through partnerships with other businesses. We support businesses that have an interest in our IP available for commercialisation and offer market research to support intellectual property development.

For more information on our IP portfolio, or a discussion on how we can support IP development, visit:

uwl.portals.in-part.com or email: employer@uwl.ac.uk



Geospatial Data Analytics for Improving Community Safety.



CyMonD, a continuous secure-by-design system for IoT devices that stops hackers in their tracks.

6. Enabling industry



We have a network of national and international employers



National Student Survey 2023

- No 1 in the UK for Accounting
- No 1 in the UK for Economics
- No 3 in the UK for Business Studies

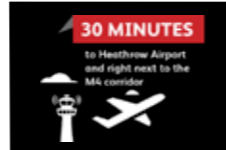
The Guardian University Guide 2024

- Best modern* university in the UK for Accounting and Finance



15 Miles

50% of the UK's top 300 companies have HQs within **15 miles** of our campus

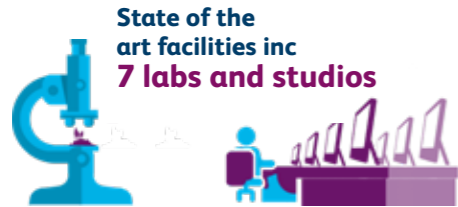


Our courses are accredited by the following professional bodies:



The Claude Littner Business School

The Claude Littner Business School is a leading provider of national and international business and finance education. Our students work in partnership with businesses on real world projects as part of their coursework. We are well connected with the business community, and offer a range of consultancy services to businesses.

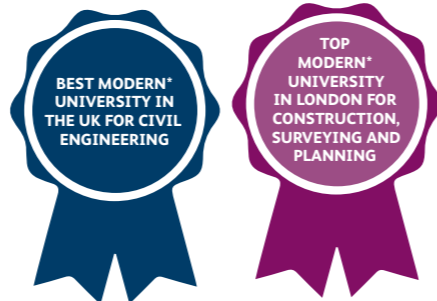


State of the art facilities inc **7 labs and studios**



Vibrant research community comprising **14 research groups**

The Guardian University Guide 2024



STRONG LINKS WITH INDUSTRY

Working with more than 60 companies, enterprises and institutions



School of Computing and Engineering

Developments in areas that will shape all our futures, such as energy, healthcare, communication, medical care or transport, all depend heavily on engineering and technology. At the School of Computing and Engineering, we provide world class education and research in the fields of computing, built environment and engineering.

*a modern university is a university established in 1992, or after.



West London Food Innovation Laboratory (WFLI)

EU ESIF funded
£1.5 million

European Union
European Regional Development Fund



Flight Pad

Latest Boeing 737 flight simulator



LGCHT is home to the HEATHROW ARCHIVE



Superb facilities:

Our award winning restaurant and industry leading kitchen facilities

National Student Survey 2023

No 3 in England for Tourism, Transport and Travel

Links with more than **400** companies and employers worldwide



16 industry partners, providing student scholarships or academic research



London Geller College of Hospitality and Tourism

The London Geller College of Hospitality and Tourism focuses on the education of professionals in the transport, tourism and hospitality sectors. An award winning college, we deliver an outstanding learning experience and connect our students to exciting and rewarding careers.

STEINWAY & SONS
LONDON'S FIRST 'All-Steinway school'

37 Steinway pianos

We've recently invested **£1M+** in facilities



LCM LIVE PROGRAMME
180+ events a year



18 professionally designed studios including live rooms
9

INDUSTRY PARTNERS INCLUDE:

- Roland
- Apple
- Opera
- Avid
- Holland Park
- Audient
- Coldstream Guards
- AMS Neve
- Ealing and Hounslow Music Services
- Focusrite
- Native Instruments

The Complete University Guide 2024 **The Guardian University Guide 2024**



London College of Music

London College of Music is the largest specialist music and performing arts institution in the UK and has been in existence for over 130 years.

Our students explore every aspect of the music and performance industries. Opportunities include performing, composing, teaching, conducting, broadcasting, recording, live sound production, engineering, music production and management within a variety of art forms.

*a modern university is a university established in 1992, or after.

** UWL received the rankings listed above when compared to all other non-specialist universities ranked in the guides / surveys cited.





Strong sector wide contacts with judiciary, solicitors' firms, barristers' chambers, Middlesex Law Society and legal charities



The Guardian's University Guide 2024



National Student Survey 2023

An impressive **mock courtroom**

Active student societies, with approx. **20** guest speakers and court visits in the last year



Recognised course provider for the Chartered Institute of Arbitrators (CIArb)



West London Equality Centre (WLEC)

Students have had the opportunity to practice law training with WLEC for 30 years, seeing clients and advising on numerous areas of law including employment, family, debt, housing, welfare and immigration.

School of Law

The courses offered within the School of Law, with their distinctive focus on law in action, are delivered by highly qualified staff and designed to provide students with a well-rounded, skills-based and professionally relevant qualification. Our impressive on-site facilities boast a court room, equipped with modern technology including laptops and video equipment for judges/advocates.



Our Midwifery Courses have been awarded the prestigious WHO/UNICEF UWL Baby Friendly Gold accreditation since February 2020. UWL was the first university in the country to achieve this accreditation.



Close links with **17** NHS organisations – lots of practice placement opportunities

We also partner with **105** private, voluntary and independent (PVI) placement providers.



The Complete University Guide 2024

Ranked 2nd modern* university in London for Nursing.



The Guardian University Guide 2024

• Ranked 3rd in London for Midwifery
• Ranked 2nd in the UK and No 1 in London for Mental Health Nursing



Gold in the TEF subject level pilot for Nursing and Midwifery.

Professor Dame Elizabeth Nneka Anionwu named as one of the most influential NHS nurses 1948-2018.

College of Nursing, Midwifery and Healthcare

We are a major provider of nursing, midwifery, paramedic science, operating department practice, social work and public health courses in West London and Berkshire. Innovative simulation centres in Reading and London are equipped with the latest technology and learning aids as well as a new 'simulance' in London. Our pre-registration courses which provide eligibility to register with the Nursing and Midwifery Council (NMC) and Health and Care Professions Council (HCPC). Our continuing professional development courses (also reapproved) enable practitioners to maintain and enhance their knowledge and practice at the highest level.

*a modern university, is a university established in 1992, or after.



United Nations
Academic Impact



The Chartered
Society of
Forensic
Sciences

accredited by
The
British
Psychological
Society

NTEC
NATIONAL
THERAPY
EDUCATION
COMMISSION

The Guardian
University Guide
2024



Modern and specialist
research equipment



We use industry leading:

- simulated casework activities
- crime scene practical situations
- laboratory work
- court presentation scenarios
- blood pattern interpretation studies

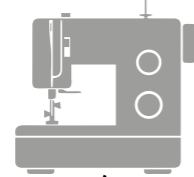
School of Human and Social Sciences

Our courses provide students with an exciting and diverse education in scientific discovery and social and health studies. We offer a full range of awards in the subject areas of psychology, addiction studies, criminology, policing, forensic science, education, nutritional therapy, sociology, youth studies and politics and international relations.

2 modern radio studios broadcasting
the student-run station Blast FM



Fashion & textiles workshops
for pattern-cutting, sew and
knit production



Film Production space
with MOCAP facility

Links with global players
in the creative industries



Two UWL graduates Rebecca
Harris (Producer) and Tom Turner
(Second Assistant Director) won an
Oscar® for Best Short Film 2018.



The Guardian University
Guide 2024

(excluding specialists)
• 3rd in London for Fashion
• No 1 in London for Film
Production and Photography

National Student
Survey 2023
Ranked 3rd in England for
Cinematics and Photography

The Complete University
Guide 2024
No 1 modern* university in
London for Communications and
Media Studies

**SUPERB
FACILITIES**



Black & White
analogue
photography
processing
studio



Silk-screen
and wet
print studio

**MEDIA
STUDIES**

1st
IN LONDON
FOR OVERALL
SATISFACTION*

London School of Film, Media and Design

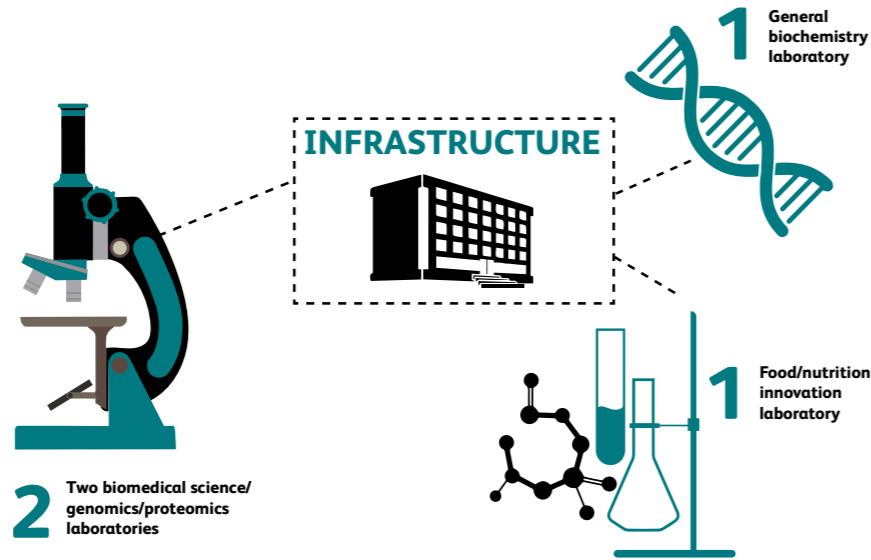
We are a centre of excellence with a vibrant culture of creative learning. Situated in West London, the hub of the UK's creative and media industries, our School is built upon the skills and experiences of our inspirational staff. All of our courses have been developed directly from the experience of our staff working in the creative industries and business.

*a modern university, is a university established in 1992, or after.



A research active School with an interdisciplinary team drawing on expertise from:

- Geller Institute of Ageing and Memory (GIAM)
- The Richard Wells Research Centre
- European Institute for Person-Centred Health and Social Care
- The Centre for Inequality and Levelling Up (CEILUP)
- NeuroAI Group



School of Medicine and Biosciences

Our newest academic school, the School of Medicine and Biosciences (SMB) offers degrees in ageing and dementia, public health, healthcare inequalities and enabling healthcare technology.

Medicine and the biosciences are some of the world's fastest-growing fields and offer exciting and rewarding career and research opportunities. We have excellent facilities and are continually adapting our curriculum to meet today's challenges and equip our students with in-demand job skills.



The IPS teaches the new Police Constable Degree Apprenticeship (PCDA) for student police officers and direct entry programmes for existing graduates under the Degree Holder Entry programme (DHEP) for both Uniform Officers and direct entry for detectives.

The Institute for Policing Studies

The Institute for Policing Studies (IPS) is an exciting new development within the University of West London. Its creation reflects the increasing role of Higher Education in the policing community in London and the UK.

We run a BSc Professional Policing degree (licensed by the College of Policing). The Institute offers MSc Policing to all students who meet the entry requirements of a 2.2 degree or equivalent. The courses are taught by staff with a strong operational background in policing and relevant academic experience. We pride ourselves on bridging academia and practical policing.



Fresh Minds for Business

Based in The Claude Littner Business School, Fresh Minds for Business is a student-led programme that offers professional-level, not-for profit consultancy services to a wide range of organisations.

Recognised in the Leveling Up Awards 2021 for Extending Enterprise; in making the award Rt Hon Anne Milton celebrated Fresh Minds for bringing "Business and Students together to challenge the status quo and build success. Businesses gain new ideas to improve growth and competitiveness and the programme underlines University of West London's commitment to be an engine of growth for the local economy."

Our clients can range from FTSE-100 companies to sole traders and start-ups.

Fresh Minds is here to:

- Find innovative solutions to business challenges
- Support the business community
- Deliver projects by students, supported by experienced consultants



Contact us today to discover how we can help you:

✉ freshminds@uwl.ac.uk ☎ 020 8209 4307



Industry Consultative Committees

UWL hosts Industry Consultative Committees across a range of Industries. Committees are normally held up-to three times per year for UWL academic Schools/Colleges and offer a valuable opportunity to provide and receive reports from your sector and our university respectively.



Westmont Enterprise Hub

Where thinkers, innovators and entrepreneurs connect

Are you an entrepreneur or business owner? Do you have a business concept but don't know where to start?

Westmont Enterprise Hub, based at the University of West London, can help you design your idea, build your concept and scale your business.

- Access to co-working space with WiFi
- Access to sector specialists
- Access to weekly workshops and networking events with experienced business professionals
- Access to monthly drop in clinics with expert advisors
- Access to business advisory sessions

We have 20+ StartUps, 150+ Members and more than 800 business subscribers.

Come join, come be part of the Hub.

✉ WestMontHub@uwl.ac.uk

☎ +44 (0)20 8231 0123

🌐 Westmonthub.co.uk

🐦 [@WestmontHub_UWL](https://twitter.com/WestmontHub_UWL)

🌐 [Westmont Enterprise Hub](https://www.facebook.com/WestmontEnterpriseHub)

📷 [@westmonthub](https://www.instagram.com/westmonthub)

University of West London, St Mary's Rd, Ealing, London W5 5RF

7. Civic engagement

Award winning alumni community

Produced by UWL graduate Rebecca Harris, *The Silent Child* won an Oscar at the 2018 Academy Awards in Hollywood, in what is an incredible achievement by a former student of the University. On her time at UWL Rebecca said that 'Studying at UWL helped me work out what I was good at, introduced me to the right people and it definitely gave me the tools to help start off my career'.

Get in touch with the Alumni Relations team:

✉ alumni@uwl.ac.uk ☎ 020 8231 0188

Scholarships and Corporate Philanthropy

Thanks to corporate philanthropy we are able to provide a growing number of students each year with scholarships.

- Corporate donors are investing in our students and the future
- Together we help our students as they work their way to a better life
- Financial support enables us to be there when our students need us.

Support for scholarships can form part of your:

Employee benefit programme

Graduate recruitment or talent development programme

Corporate social responsibility

Marketing and PR activity

You can also help our students to achieve their aspirations by making a gift to one of the following areas:

Academic research

Special projects

Unrestricted fund*

Postgraduate fellowships

Corporate naming rights on facilities

Get in touch with the Development Team:

✉ development@uwl.ac.uk ☎ 020 8231 2627

*Gifts will be diverted to area of greatest need.



Rebecca Harris,
BA Film Production Graduate,
BAFTA Award Winner.

Volunteering and Civic Engagement

The Volunteering Team supports UWL students and alumni in getting involved in volunteering. Volunteering is a great thing to do for others and also for each individual person. It allows students to build their skills and networks, boost their wellbeing, and make a difference to the local community. The Volunteering Team focuses on creating dynamic volunteering opportunities for UWL students by partnering charities and civic organisations in the west London and wider area.



-  uwl.ac.uk/volunteering
-  theteam@uwl.ac.uk
-  [@uwlvolunteering](https://www.facebook.com/uwlvolunteering)
-  [@the_vteam](https://www.instagram.com/the_vteam)
-  [@the_vteam](https://twitter.com/the_vteam)

Pyramid – Building friendships, developing confidence

Pyramid is a long-established and evidence-based early intervention that supports the mental health of children and young people aged 7-14 who are shy, quiet, anxious and withdrawn. Pyramid clubs have supported thousands of children across the UK to have happier childhoods. Many of our students volunteer for Pyramid clubs in schools local to the University and schools further afield can have training to run their own Pyramid clubs under license from the University.

To find out more go to:

-  www.uwl.ac.uk/business/pyramid-clubs-schools
-  pyramid@uwl.ac.uk
-  07810 853561



*2016 Deloitte Impact Survey

Outreach Team

Widening Participation is a government-led initiative to increase the number of people from underrepresented social groups who progress on to further and higher education (HE). At UWL we provide opportunities and specialist projects for people within these groups to experience HE and to access support that they may need to progress further in their education. By combining knowledge of higher education and careers routes, with insight into industry gained from our network of employers and partners, we challenge preconceptions, raise attainment and help people meet their aspirations.

If you would like to support our programmes, please get in touch:

-  www.uwl.ac.uk/outreach
-  outreachteam@uwl.ac.uk



WInSTEM - Encouraging, supporting and celebrating women in STEM

WInSTEM is a group of academics in the School of Computing and Engineering at UWL. We have a passion for encouraging women and girls to pursue careers in Science, Technology, Engineering and Mathematics (STEM), and particularly our own specialist areas of engineering and technology.

If you are interesting in finding out more please contact our Outreach Team at:

-  outreachteam@uwl.ac.uk



8. The UWL family

Drama Studio London

Drama Studio London, part of the University of West London, was established over 50 years ago and is renowned for delivering training for the next generation of actors by current acting professionals.

We are a founding member of the Federation of Drama Schools and are accredited by the Council for Dance, Drama and Musical Theatre (CDMT).



Ruskin College, Oxford

In 2021 Ruskin College became part of the University of West London (UWL) group.

UWL and Ruskin College's history share similar values; widening participation and access to transformation education being central to both institutions.



9. Specialist facilities and venues



FlightPad

To support the development of our commercial pilots and air transport management students UWL have introduced an industry-standard Boeing 737-800 flight simulator. The simulator is available to hire during weekends, holidays and evenings.

At UWL we are training the next generation of aviation experts.



Television Studios and Photography

The TV Studio and Gallery spaces bring to life a range of projects in multiple disciplines and is equipped with lighting grid with DMX lighting control, green and white screens, Ross Crossover Vision Mixer for live editing and audio and video recorder / playback devices.

Our photography studios are inter-linked to allow for larger shoots, and are equipped with Profoto flash lighting, high-end medium and other tools to produce professional-grade work.



Kitchen Space

We have four fully equipped classroom kitchens for different types of cooking.

They are ideal for running evening or weekend courses, chef training and competitions. We also have a kitchen lecture theatre that's available to hire.



Clinical Simulation Centres

Our innovative Clinical simulation centres in Reading and London are equipped with the latest technology and learning aids, including immersive rooms and VR equipment.

These Clinical Simulation centres are able to replicate theatre, critical care, A&E, midwifery, ward-based and community environments and can also be used for film and television work.



Simulance - Paramedic Science

Students benefit from our industry-standard 'Simulance' - A mock ambulance that offers a fully functioning interior of a London Ambulance Service front-line ambulance.

The Simulance is ideal for educating the health and social care workforce and can also be used for film and television work.



Crime Scene Room and Forensic Laboratories

The Crime Scene Room and laboratories run scenarios based on real-life police investigations, and provide the opportunity to gain hands-on experience with equipment that is utilised by employers and industry.

Students develop analytical skills for assessing blood spatter, DNA evidence and gain experience with the investigative process.



Radio Studios

Blast FM broadcasts from two well equipped radio studios that simulate contemporary commercial radio operations.

The teaching studios accommodate simultaneous broadcasting and teaching.



Food Innovation Centre

Can we help you bring a new food or beverage product to the market? Our Food Innovation Centre will offer you guidance, advice, technical support, product development services, customer acceptability testing and sensory analysis to enable the creation of your desired product.

Product development services, customer acceptability testing and sensory analysis to enable the creation of your desired product.



Dance and Yoga Studios

Located at our Ealing site, our contemporary dance studios offer an ideal space for rehearsals, dance or yoga classes for up to 20 people.

We have small, medium and large studios equipped with wooden sprung floors, ballet bars and mirrors.



Biomedical Sciences Labs

The Biomedical Sciences labs are fitted to an extremely high standard, allowing us to deliver our modern, forward-looking curriculum at a practical level, providing laboratory training that will give you the best possible start as a researcher or clinical scientist.

Everything in the labs, from pipettes to microscopes, has been recently installed, so you will be learning to use equipment identical to that in modern pharmaceutical, nutritional and clinical laboratories.



Mock Courtroom

Used for teaching trial skills, mooting competitions and other advocacy exercises throughout the year. It also gives students the opportunity to participate in mock trials.

The Mock Courtroom gives a realistic experience of life in the courtroom. The room can also be used for film and television work.



The Savoy Suite

This training suite gives future business people a taste of industry, thanks to its board rooms, presentation theatres, video-conference rooms and break-out areas.

Classrooms for workshops or small group presentations

For workshops or small group presentations, we offer modern classrooms with built in AV equipment located at both our Ealing and Brentford sites.



Weston Hall

The perfect venue for conferences, filming and private dining. Our West London campus provides a wide selection of lecture theatres, conference suites and specialist rooms. Weston Hall is the University's beautiful auditorium and is a bright, comfortable and inspiring place to learn in. It can seat over 300 people at conferences, lectures, performances and academic events.



Paragon Suite

The Paragon Suite is a unique, private meeting space with stunning views of West London located at our Paragon House campus in Brentford. The central part of the suite is a large open area that can host up to 40 delegates with a kitchen area to host refreshments. For breakout space there is a 10-person executive boardroom and a six-person meeting room.

It is an ideal venue for meetings, conferences, interviews, presentations, filming as well as cocktail receptions and networking events.

If you would like to book any of our facilities or have any questions or queries please get in touch:

✉ venues@uwl.ac.uk ☎ 020 8231 2038 🌐 www.uwl.ac.uk/venuehire



Pillars Restaurant

Based at our Ealing campus, The Pillars Restaurant is The London Geller College of Hospitality and Tourism's award-winning training restaurant.

It is a specially designed educational environment where students learn the art of fine service and culinary practices. Our highly qualified and experienced lecturers support our culinary arts and hospitality students to ensure our guests enjoy a contemporary and elegant dining experience.



For opening times, menus bookings and events contact:

✉ pillars@uwl.ac.uk

☎ 020 8231 2200



Heathrow Exhibition and Archives

'Heathrow: The Journey', is a permanent exhibition at the University of West London's Ealing site on St Mary's Road.

Heathrow Archives: In addition to the Heathrow Exhibition, the University of West London is also home to the Heathrow Archive, a collection of more than 800 artefacts that tell the story of Heathrow's history. Access is by appointment only.

For further information please contact:

☎ 020 8231 2405

🌐 <https://www.uwl.ac.uk/study/hospitality-tourism/heathrow-exhibition>

Admission is free. The exhibition is open daily to students, staff and the public from 11am to 4pm, including weekends and holiday periods. Please note that our opening times are subject to change.



London College of Music: Partnerships and Performance Projects

Final year BMus and BA students present a wide range of self-managed projects as part of their performance-based modules. These performances take place at a variety of venues including our own fabulous Lawrence and Vestry Hall along with a number of popular venues across London. The shows are open to the public, and are often used to showcase artists to record company A+R departments and live music promoters.



World-leading Maritime Business Degrees, now in London

- MSc Maritime Business Management
- MSc Marine Engineering Management
- MSc Maritime Cyber Security

Find out more:

www.uwl.ac.uk/HIMS

Collaboration with BCA College and the University of West London

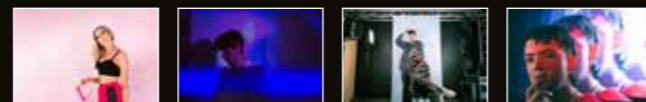
Securing the next steps in music creation and production



The University of West London – home of the London College of Music – is now running its own record label with distribution provided by AWAL.

The record label, London Noise, offers students a unique space to release new music, while also providing industry experience to music management trainees who work directly with the signed artists.

The move is an incredible opportunity, putting UWL and its students at the heart of the creation and distribution of new music in an industry-leading initiative which celebrates and promotes talent in the performers, musicians and managers of tomorrow.



Going Global: Our Partnership Programmes

We have around 40 UK and Transnational Education partnerships supporting upwards of 11,000 students, with a focus on globally relevant courses and employability. Transnational Education partners are across Europe, the Middle East and Asia including Cyprus, Germany, India, Singapore, Sri Lanka and a branch campus in Ras al Khaimah, the UAE.



10. Research and study

Our research centres concentrate on socio-economic and creative issues. Each of our research centres is staffed by experts with an enviable record of publications, conferences, media and public engagement work in their chosen fields.



Centre for Inequality and Levelling Up (CEILUP)

Established in 2021, CEILUP produces policy relevant research to help shape approaches to addressing inequality in the UK. The centre focuses on developing practical solutions to the challenges that face the UK today related to inequality in social inclusion, employment, education and opportunity.



The Cybersecurity and Criminology Centre

The Cybersecurity and Criminology Centre (CCC) was established to examine, analyse and assess current and future criminal threats to individuals, organisations and national security. The CCC is a hub for interdisciplinary research and public engagement in cybersecurity, crime and their intersections.



European Institute for Person-Centred Health and Social Care

The last decade has brought with it an increasing recognition that chronically ill patients need more comprehensive forms of assistance. This mandates a need to move away from our current approaches to the management of these conditions and towards newer models of care that are personalised, integrated and contextualised.



The Faringdon Research Centre for Non-Destructive Testing and Remote Sensing

The centre explores new avenues of research into the development and enhancement of the capabilities of non-destructive testing equipment. The Centre utilises both hardware and software technology in their research and consultancy projects.

The centre specialises in applying ground penetrating radar (GPR) and InSAR Satellite imaging, 3D Laser scanner and airborne radar sensors technology widely recognised as the most advanced in the UK and beyond. Current projects include, health monitoring of ancient trees and woodlands, highways infrastructure (bridges, tunnels, highway pavements), railway foundations and runways and taxiways.



The Richard Wells Research Centre

The Richard Wells Research Centre conducts primary research focusing on patient safety and fundamental care. In addition, it undertakes systematic and realist synthesis and collaborates in national and international guideline development through its work as an internationally accredited centre for evidence-based practice.



Geller Institute of Ageing and Memory

As the population increases its longevity, the incidence of those living with dementia will increase exponentially. The Geller Institute of Ageing and Memory recognises the pressing need to develop effective psychosocial care to help people live well with the condition.

The Institute will concentrate on a number of inter-connected research strands. Current research in the Institute focuses on: Multi-sensory approaches in dementia care, new technologies and dementia care, ageing and memory, community and home-based approaches, the arts and dementia therapies, person-centred care in complex cases, early onset and location problems and epidemiology of ageing.

Emerging research will be used to inform practice in dementia care at all levels and use for professional staff who work across the sector.



The International Centre for Hospitality and Aviation Resilience Management (ICHARM)

This centre provides an inclusive platform for interdisciplinary impactful research within the context of hospitality, tourism and aviation, focusing primarily at the management of reputation, risk and resilience in these industry sectors. The Centre's goal is to address the most important and pressing issues in hospitality, tourism and aviation.



Policy and Practice Research Institute for Screen and Music (PRISM)

The Institute focuses on impacting research in the music and screen industries and draws on the University's long history of expertise in film and performing arts.



Digital Futures Lab

This will offer students the opportunity to gain skills using AI supportive technologies, in the areas of health, data science and bioinformatics, gamification and the digital society.

Undergraduate study

Studying an undergraduate degree at UWL is all about gaining the skills, expertise and insight you need to excel in your chosen career. You will be taught by highly experienced industry experts and have the chance to benefit from our close industry connections.

Postgraduate study

A postgraduate degree can enhance your career prospects. If you are considering a new career path, it's a way to enhance and build on your current qualifications, and learn new, essential skills. You may also want to explore your passion for, and commitment to, a particular field of study.

The Graduate School

At the Graduate School, we support doctoral students and supervisors and run courses to support their development. The University of West London welcomes applications from students who wish to study for a PhD or a Professional Doctorate. We publish, on behalf of the University, an academic journal 'New Vistas' which addresses issues of policy, practice and scholarship in higher education.

UWL Libraries

Our libraries at Ealing and Reading provide study spaces, computers and space for collaborative work. The Paul Hamlyn Library at Ealing is open 24/7 during term time and is a light open space spread across three floors with different types of study zones. Our Reading Campus, the Berkshire Institute for Health, houses a specialist library serving the College of Nursing, Midwifery and Health.

If you are interested in studying at the University of West London contact:

📞 0800 036 8888 or visit:

🌐 www.uwl.ac.uk to request a full prospectus.

Virtual campus tour

Take a virtual tour of our sites and discover the facilities at our Ealing and Brentford sites in West London, and our Berkshire Institute for Health at Fountain House in Reading town centre.

🌐 www.uwl.ac.uk/virtual-tour

Our value:

To be a career focused, professionally engaged, modern university of quality.

Our mission:

To inspire our students to become innovative and creative professionals connecting them to exciting and rewarding careers.

Our commitment:

Provide exceptional work related career opportunities.

11. Ten ways to partner with UWL

1 Tap into UWL Graduate Talent Bank (visit page 8)

2 Explore Degree Apprenticeships (visit page 14)

3 Become a work experience provider and hire a UWL placement student (visit page 10)

4 Access expert research and consultancy for your business (visit page 16)

5 Register for a sector specific careers fair on campus (visit page 11)

6 Use our specialist facilities and event spaces (visit page 36)

7 Give to student financial support (visit page 30)

8 Use our free business consultancy for SMEs (visit page 28)

9 Develop a Knowledge Transfer Partnership to access funding and university expertise on strategic projects (visit page 16)

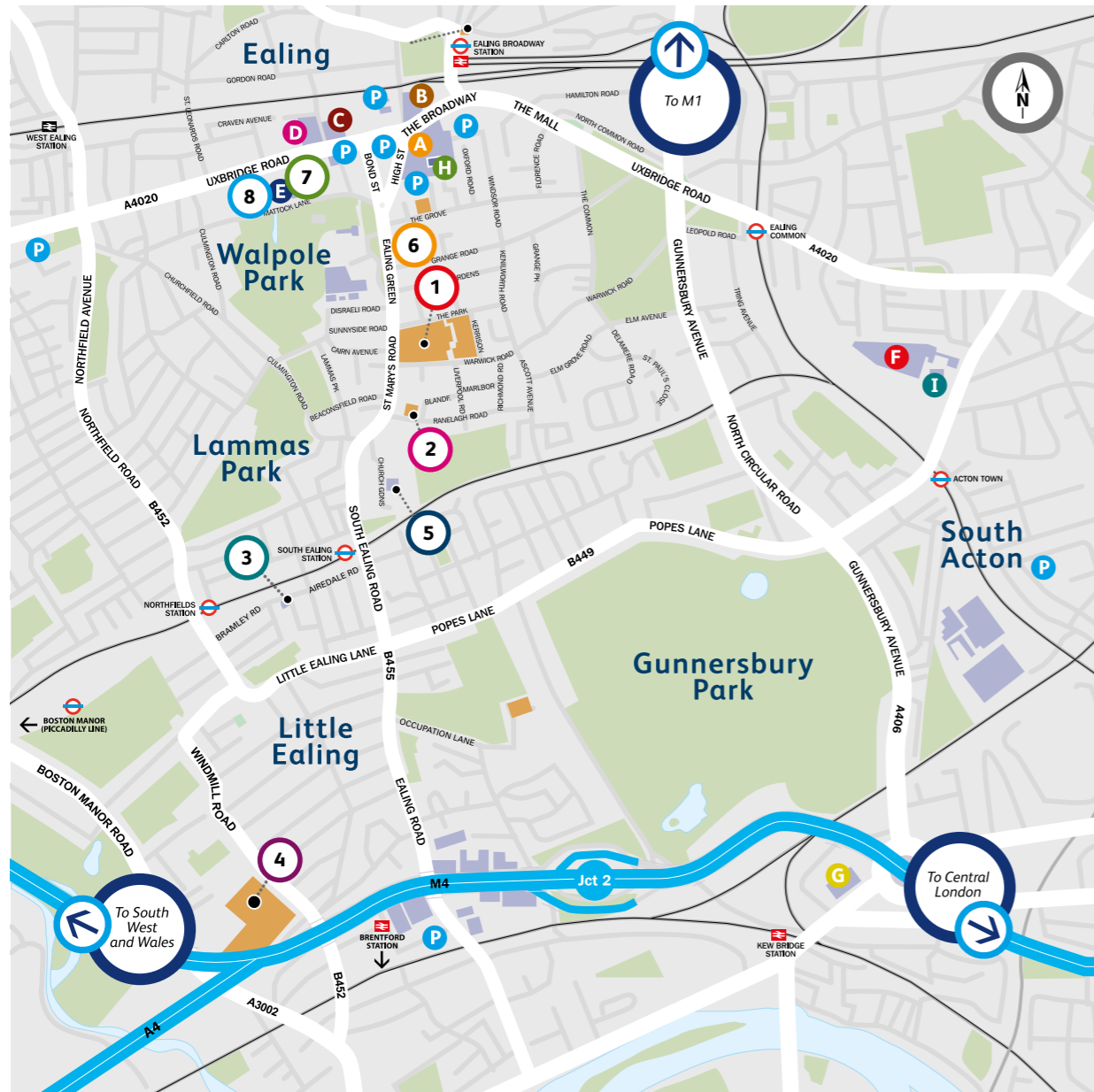
10 Book a meeting with UWL and access the range of services to help your business thrive.

🌐 [Book a meeting:](#)



*Dependent on availability

Ealing and Brentford



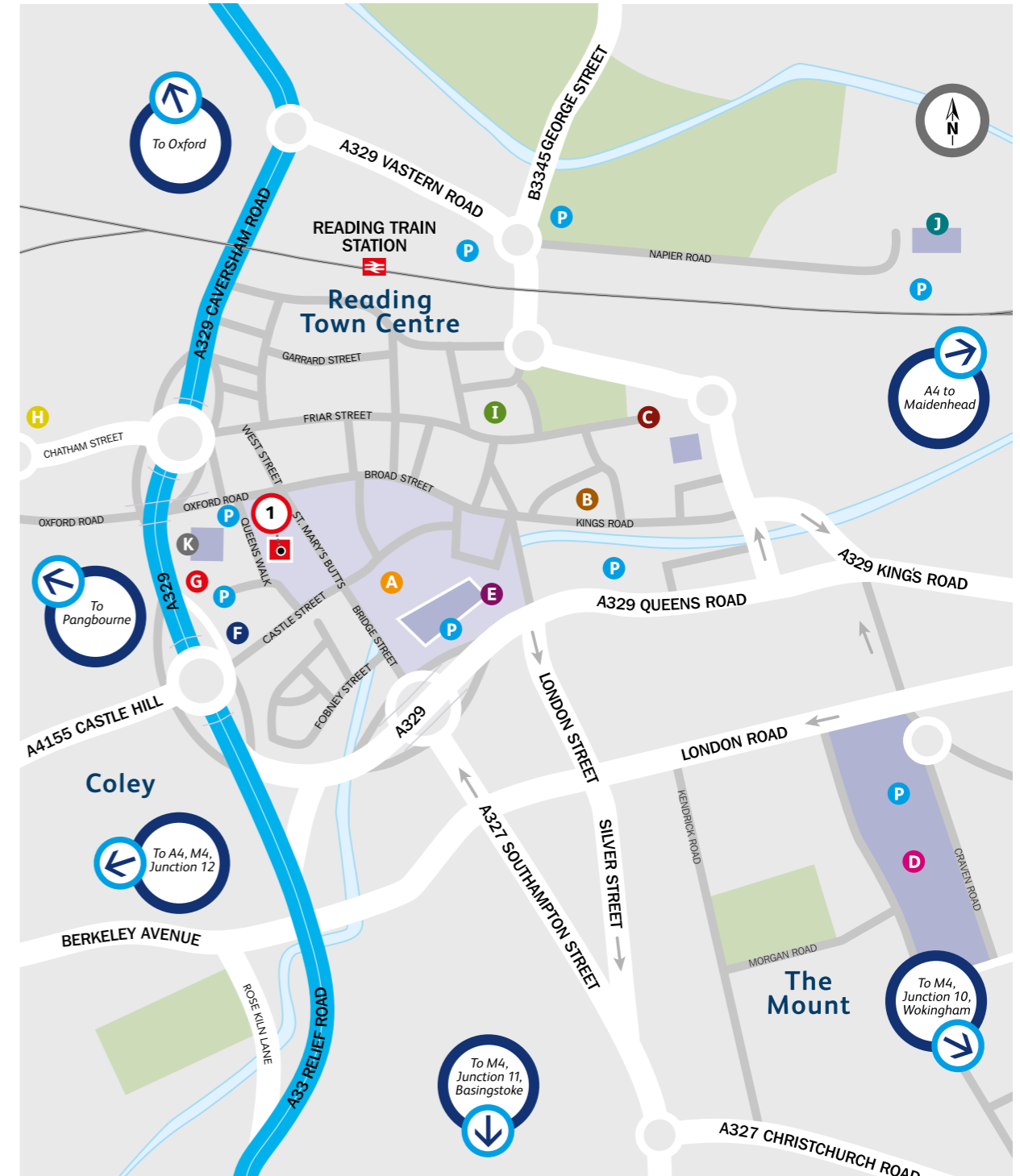
University Buildings

- | | | |
|--|--|---|
| <p>1 Ealing Site</p> <ul style="list-style-type: none"> Academic Office Accommodation Service Administration Bookshop School of Law London School of Film, Media and Design London College of Music London Geller College of Hospitality and Tourism Paul Hamlyn Library Pillars Restaurant School of Medicine and Biosciences School of Computing and Engineering Student Services Students' Union | <p>2 Vestry Hall</p> <ul style="list-style-type: none"> London College of Music <p>3 Bramley Road Surgery</p> <p>4 Brentford Site</p> <ul style="list-style-type: none"> The Claude Littner Business School College of Nursing, Midwifery and Healthcare School of Human and Social Sciences Nursing Simulation Centre | <p>5 St. Mary's Church</p> <ul style="list-style-type: none"> London College of Music performance venue <p>6 Drama Studio London</p> <p>7 Cavendish House</p> <p>8 Century House</p> |
|--|--|---|

Additional Information

- A** Broadway Shopping Centre
- B** Arcadia Shopping Centre
- C** Ealing Town Hall
- D** Ealing Civic Centre
- E** Questors Theatre
- F** Acton Hospital
- G** Leisure Centre
- H** Library
- I** Sports Centre
- P** Parking

Reading



University Building

- 1** Berkshire Institute for Health
Tenth Floor,
Fountain House,
2 Queens Walk,
Reading
RG1 7QF

Additional Information

- | | | |
|--|---|---|
| <ul style="list-style-type: none"> A The Oracle Shopping Centre B Central Library C Abbey Ruins D Royal Berkshire Hospital | <ul style="list-style-type: none"> E Cinema F Police Station G Civic Centre H Central Swimming Pool | <ul style="list-style-type: none"> I Town Hall and Museum J Tesco Extra K The Hexagon P Parking |
|--|---|---|



UNIVERSITY OF
WEST LONDON
The *Career* University

© The University of West London, St Mary's Road, Ealing, London W5 5RF, 2024 All rights reserved. No part of this publication may be used, copied, imitated, reproduced, republished, modified, distributed or transmitted in any form or any means, including photocopying, recording or storing in any medium by electronic means or otherwise, without the prior written permission of the copyright owner (The University of West London).

University of
West London
St Mary's Road
Ealing
London W5 5RF

University of
West London
Boston Manor Road
Brentford
Middlesex TW8 9GA

University of
West London
Fountain House
2 Queens Walk
Reading RG1 7QF

Drama Studio London
Grange Court
1 Grange Road
Ealing
London W5 5QN

Ruskin College
Ruskin Hall
Dunstan Road
Old Headington
Oxford OX3 9BZ

Tel: 0800 036 8888 Int: +44 (0)20 8231 2468 uwl.ac.uk

Published: 2024